



NAIA

Yacht Charter Details for 'Naia', the 38.51m Superyacht built by Sanlorenzo

SPECIFICATIONS

LENGTH

38.51m / 126'4

BEAM

7.6m / 24'11

DRAFT

2.85m / 9'4

YEAR

2009

REFIT

2024

CRUISING SPEED

22 Knots

ACCOMMODATION

GUESTS

10

CABINS

5

CREW

8

CABIN CONFIGURATION

1 Master

1 VIP

1 Double

2 Twin

CHARTER RATES

SUMMER

from

€135,000 / week + expenses

WINTER

from

€135,000 / week + expenses

Details correct as of 19 May, 2024

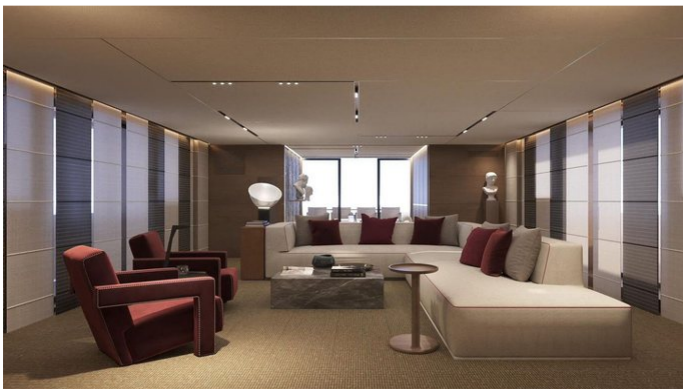


FOR MORE INFORMATION:

CLICK HERE



or SCAN QR CODE



MORE PHOTOS, VIDEO OR INTERACTIVE DECK PLANS:

 [CLICK HERE](#)

NAIA YACHT CHARTER

Superyacht NAIA was built in 2009 by Sanlorenzo. She is a 38.51m / 126'4 40Alloy motor yacht with exterior design by Francesco Paszkowski Design and interior styling by Francesco Paszkowski Design . Naia offers accommodation for up to 10 guests in 5 cabins with additional room for her crew of 8. She features a variety of amenities to ensure comfortable charter vacations, including, Air Conditioning, Stabilizers at Anchor, WiFi connection on board & Gym/ exercise equipment. She also carries an impressive collection of toys as listed below.

NAIA AMENITIES & TOYS



Stabilizers Underway



Wi-Fi



Video On-Demand



At-Anchor Stabilizers



Sunpads



Gym



Air Conditioning



Satellite TV

For a full up-to-date list of leisure facilities or amenities onboard Motor Yacht Naia please contact your Yacht Charter Broker prior to booking your vacation. If there is a particular water toy that you would like, but it is not listed, then it may be possible to rent this equipment for you.

MORE TENDERS, TOYS & YACHT AMMENITIES INFO:



[CLICK HERE](#)

CHARTER NAIA

If you are interested in chartering NAIA please contact your yacht charter broker for more information about booking a luxury charter vacation on board this Sanlorenzo superyacht .