



AFRICA I

154' 3" (47m) | Benetti | 2010

AFRICA I

BASIC SPECIFICATIONS

BUILDER

Benetti

BEAM (ft/m)

28' 11" (8.8m)

CRUISING/MAX SPEED

16.5 / 24.2 Knots

CREW

12

RANGE

3500 nm

LENGTH (ft/m)

154' 3" (47m)

DRAFT (ft/m)

9' 3" (2.8m)

FUEL CONSUMPTION

420 Litres/Hr

ACCOMMODATION

12 guests in 6 cabins

INTERIOR DESIGNER

Francois Zuretti

BUILT/REFIT

2010 / 2021

GROSS TONNAGE

492 GT

ENGINES

2 x MTU M90 16V 4000

ARRANGEMENTS

Master Cabin, Vip Cabin, 2x
Double Cabin, 2x Twin Cabin

AFRICA I

KEY FEATURES

- › REFRESHED IN 2021
- › STABILISERS AT ANCHOR AND UNDERWAY
- › A WIDE RANGE OF WATER SPORT EQUIPMENT INCLUDING BRAND NEW TENDERS
- › SLEEK EXTERIOR LINES AND FRESH MODERN INTERIOR
- › WHEELCHAIR ACCESSIBILITY THROUGHOUT THE MAIN DECK
- › FULL-BEAM MASTER CABIN ON MAIN DECK WITH A PRIVATE DECK
- › CINEMA PROJECTOR IN UPPER SALON

AFRICA I

WATER TOYS

- › RIBCO VENOM 44 13,50M (2023)
- › 2 X SEABOB F5S
- › 2 X PADDLE BOARDS
- › WAKESURF
- › INFLATABLE DOCK PARKING STATION FOR THE WATER TOYS AND JET SKIS
- › CASTOLDI 21 BEACH LADDER 6M TENDER (2021)
- › 1 X RADIN ELECTRIC SURFBOARD
- › WATER SKIS
- › INFLATABLE SOFA
- › SNORKELING EQUIPMENT
- › 2 X SEADOO RXP 300 RS WAVERUNNERS (2018)
- › 1 X LIFT FOIL ELECTRIC SURFBOARD
- › WAKEBOARD
- › INFLATABLE TUBES
- › WATERSLIDE (UPON REQUEST)

AFRICA I





AFRICA I



AFRICA I



AFRICA I



AFRICA I





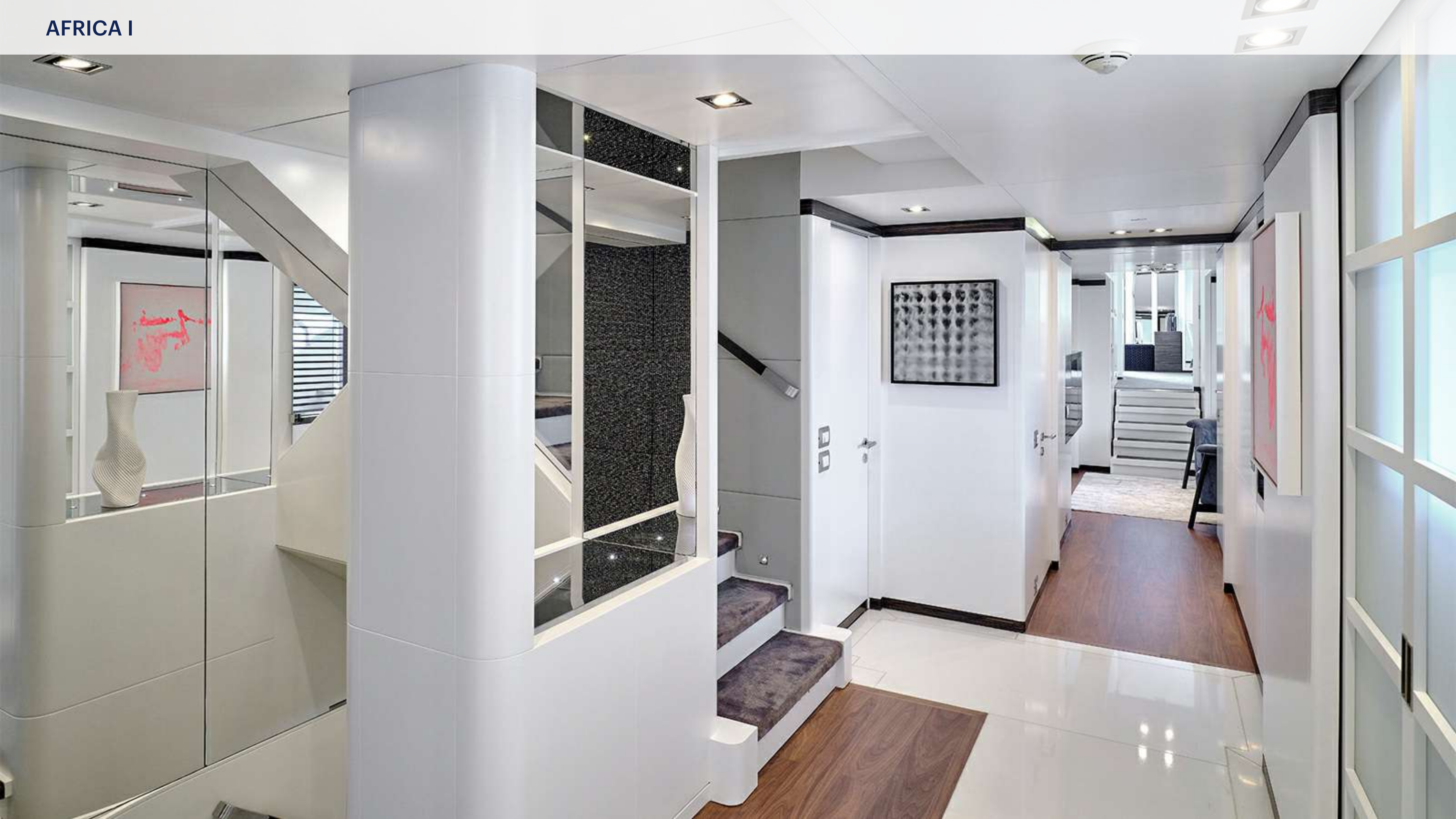




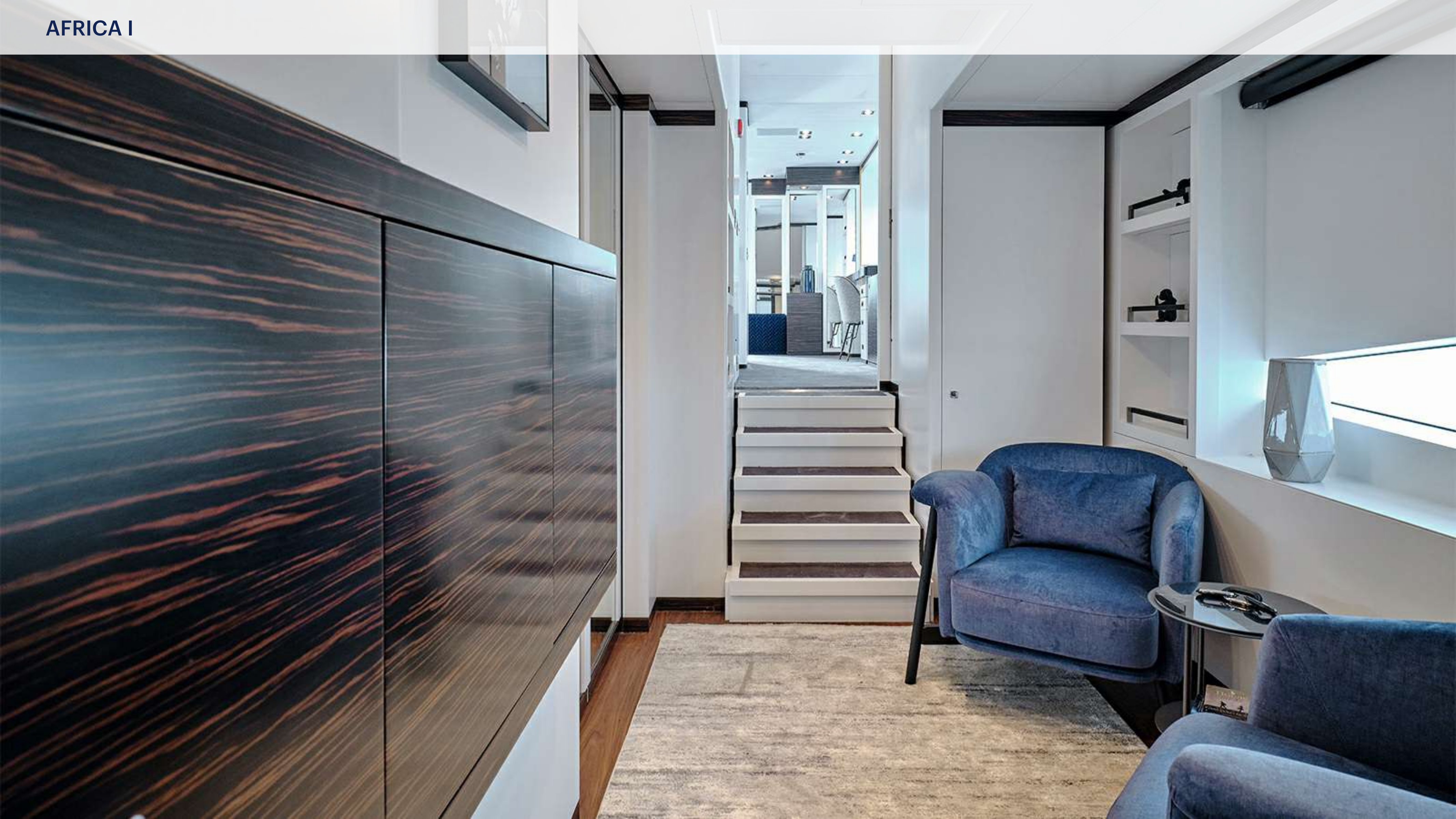


































MARRAKECH
FLAIR





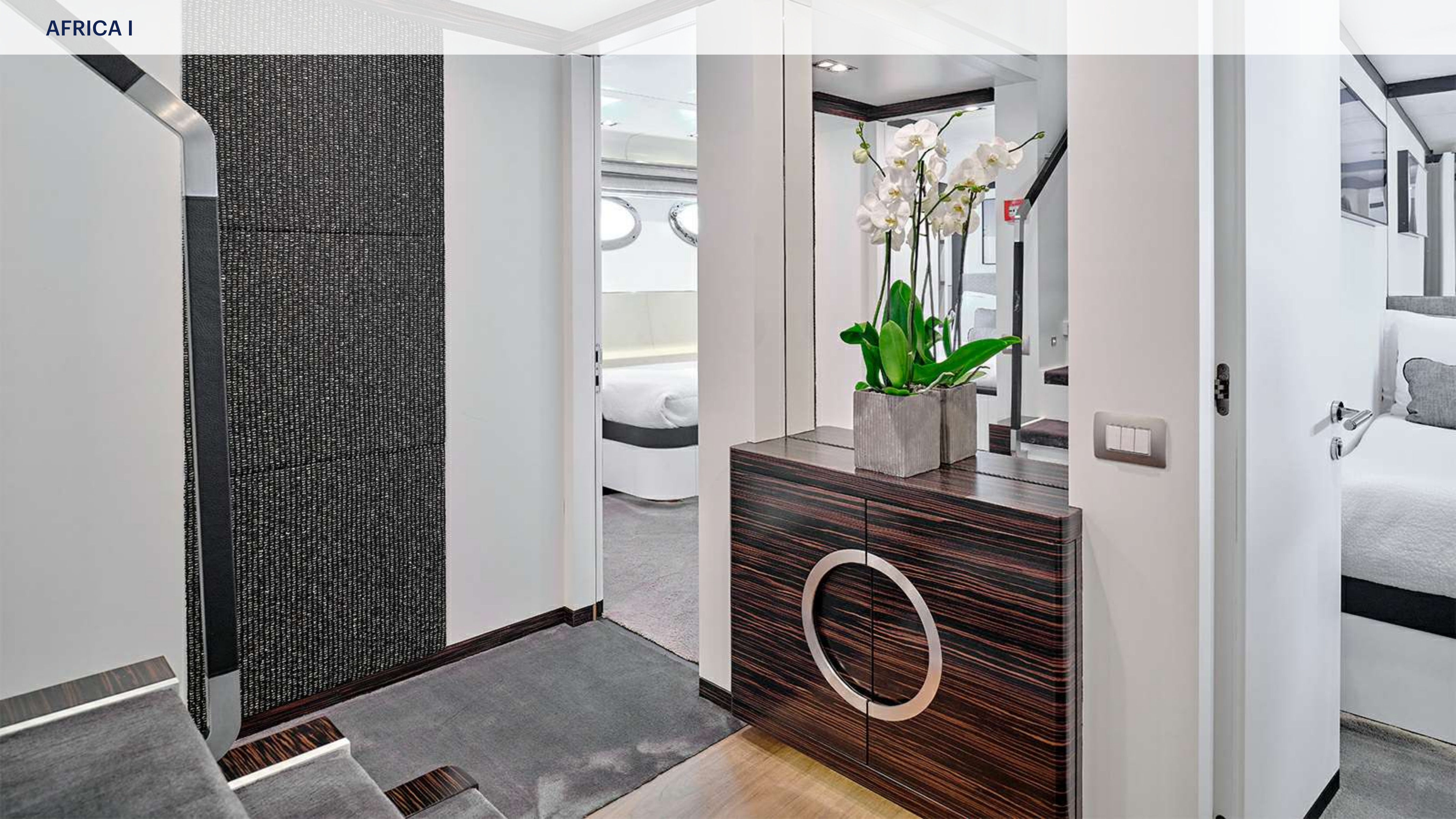








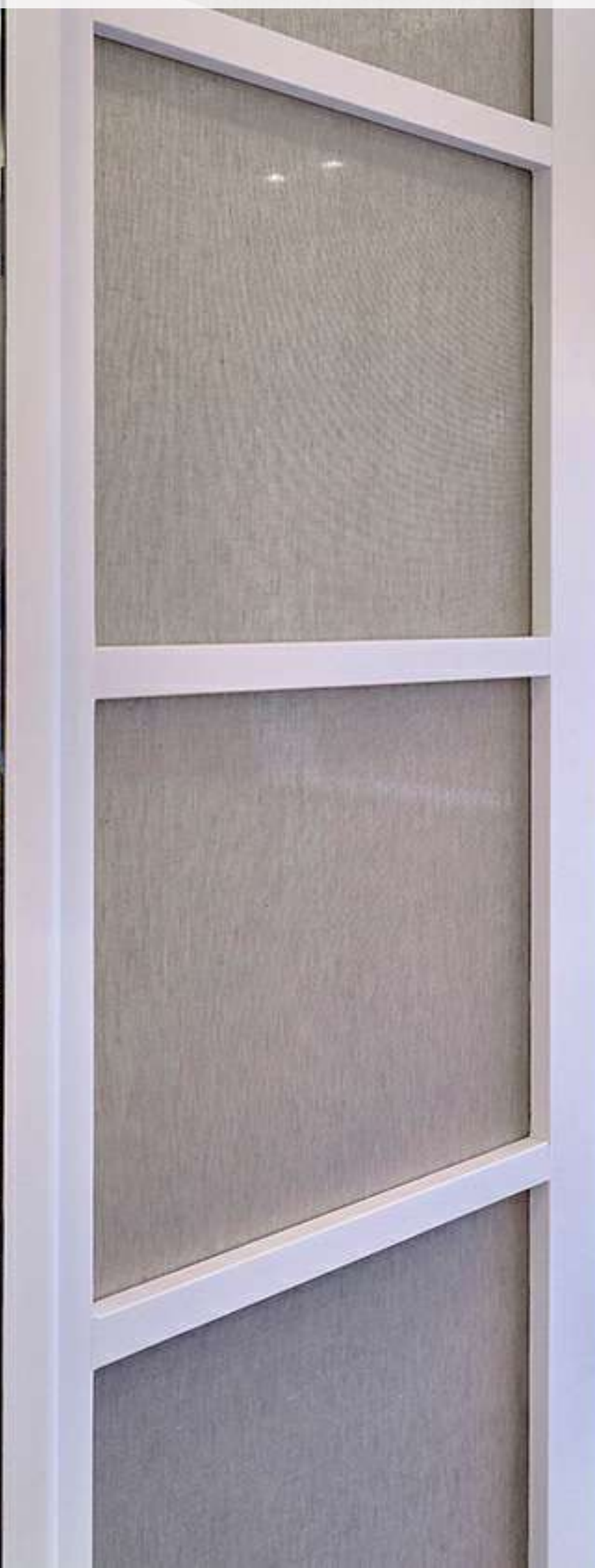






















AFRICA I

























AFRICA I





AFRICA I





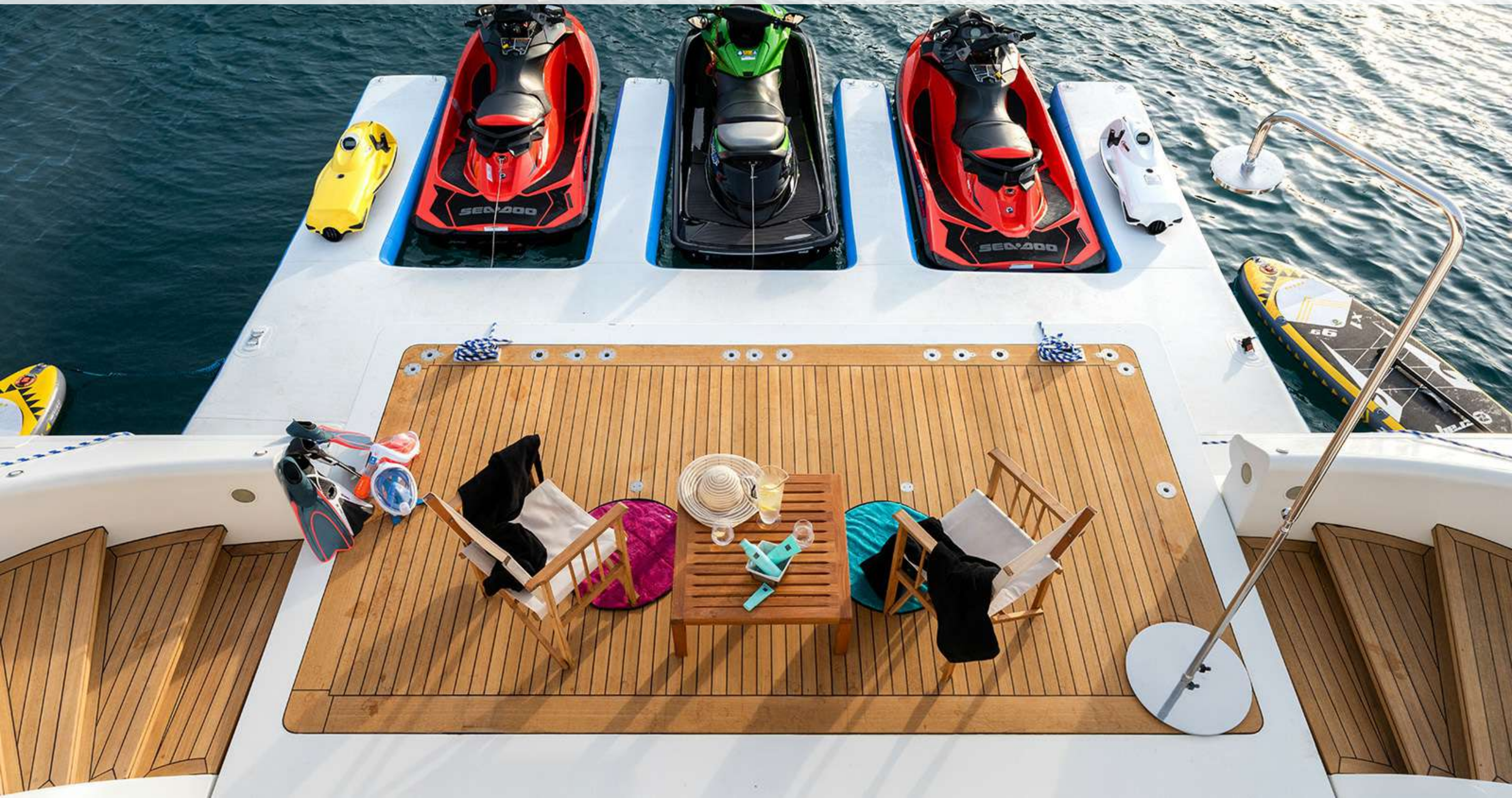












AFRICA I



AFRICA I



