

E-BROCHURE

Ahpo







AHPO is a bespoke yacht from Lürssen that comes with every possible amenity for guests looking for a charter like never before.

She can accommodate 16 guests across eight cabins including a jaw-dropping Master duplex en suite with direct access to a vast sky deck gym.









FORMULA III







The formal dining table seats up to 22 guests and has fold down balconies on each side. The alfresco table can also convert into two tables for 6 guests, as well as into one big table for up to 22. The board room table can seat up to 14.













The rest of the accommodation includes seven double cabins. Two VIP cabins can be found on the owner's deck, while four double cabins are situated on the main deck and one on the lower deck.













The lower deck spa is a standout feature with a plunge pool, a Himalayan salt sauna, a Hammam and massage room, decorated with beautiful mosaics and ivory onyx, and is a beautiful, blissful setting where guests can let their worries wash away.

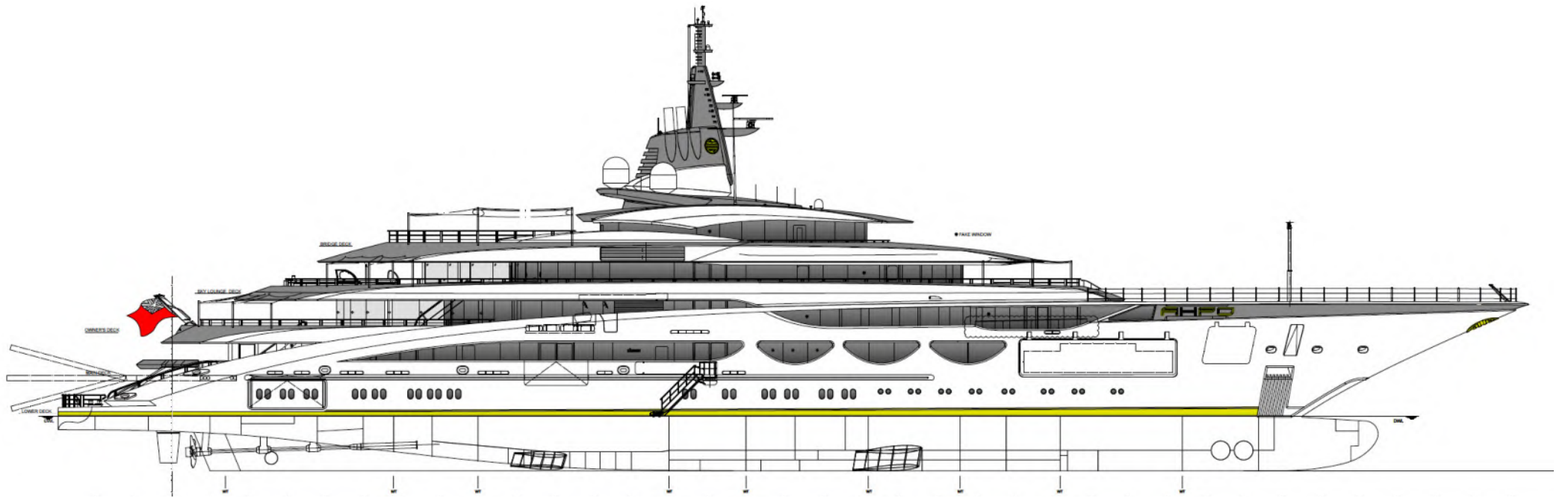


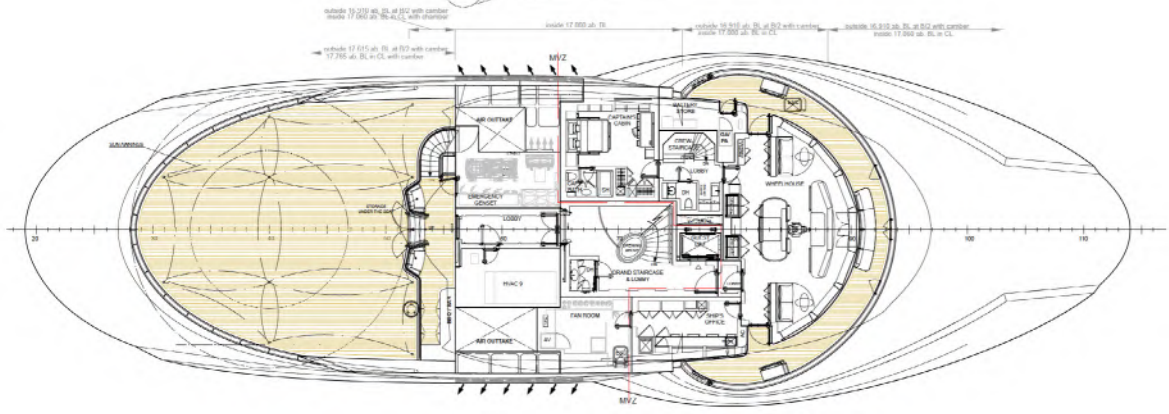
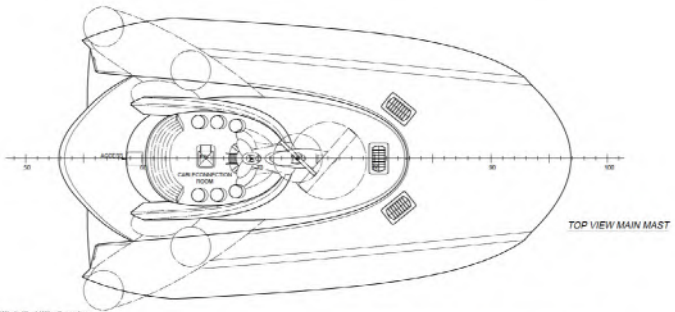
Perfect for family or wellness charters, AHPO comes with a wealth of outstanding features, from her infinity pool on the sky deck and oversized beach club to her cinema, vast sky deck gym and a touch-and-go helipad.

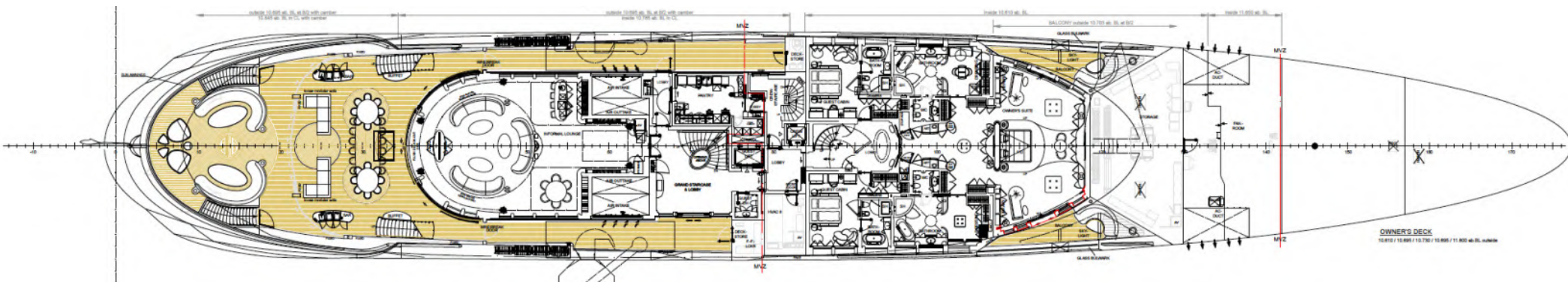
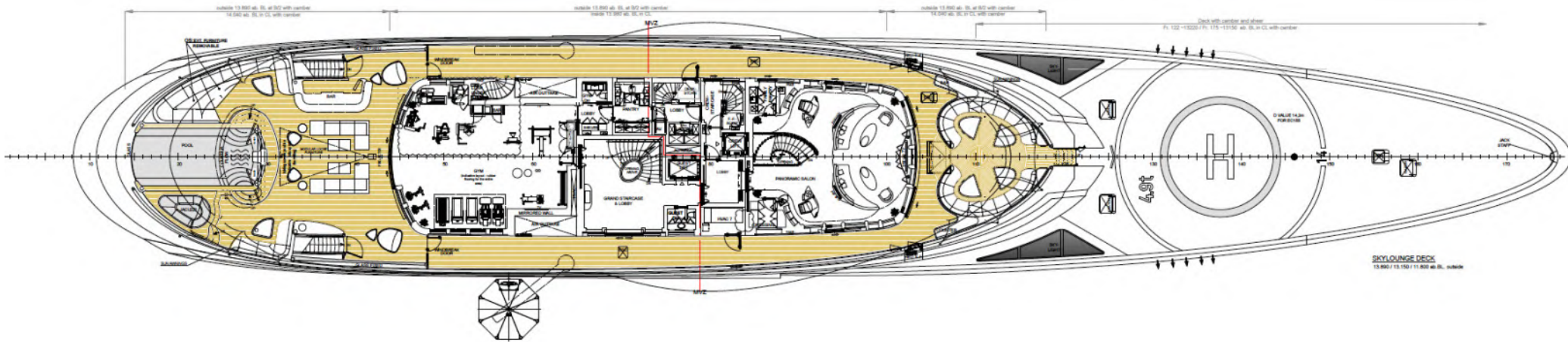


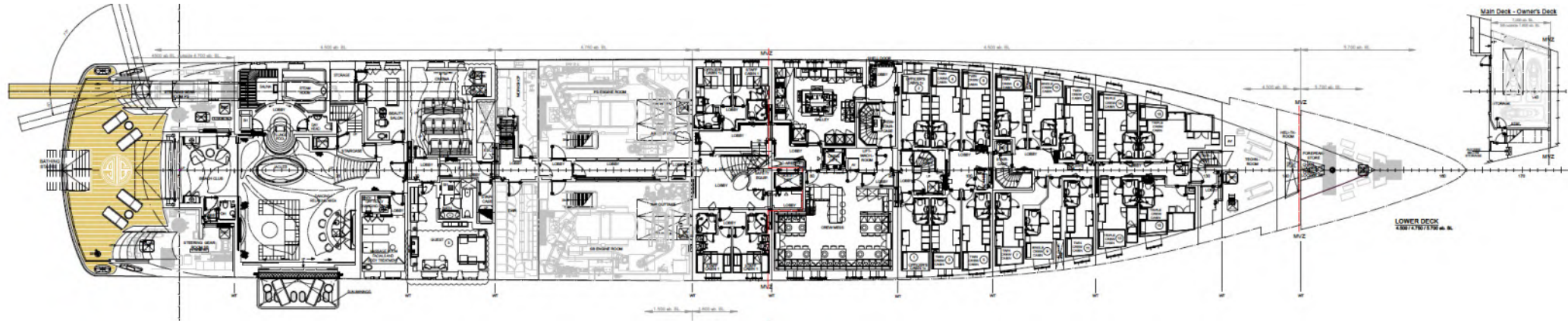
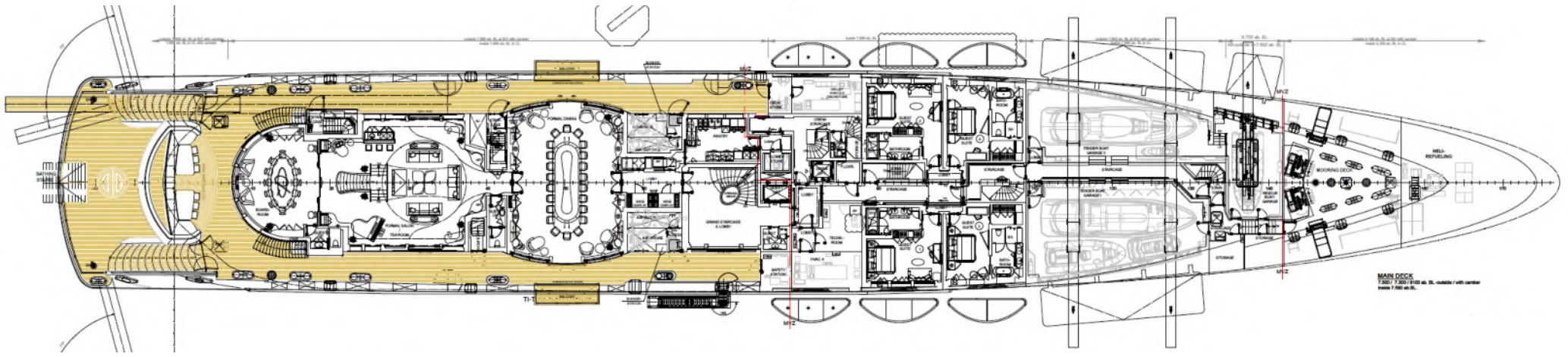


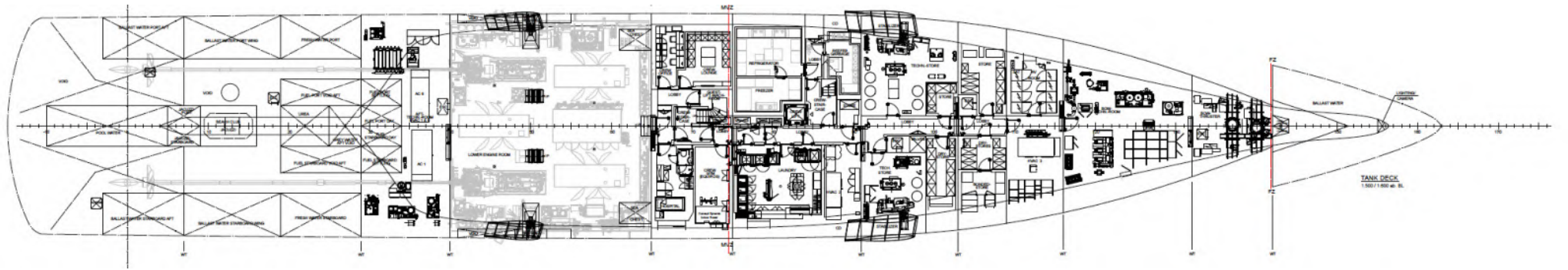












SPECIFICATIONS

MAIN CHARACTERISTICS

Builder: Lurssen

Length: 115.10 m (377' 7")

Beam: 18.21 m (59' 9")

Draft: 4.30 m (14' 1")

Crew : 39

Year built: 2021

Accommodation : 16 guests

Cabin configuration: 8 double

Interior Designer: Nuvolari & Lenard

Cruising speed : 14 knots

Stabilizers at anchor

Stabilizers underway

Approved RYA centre

TENDERS

1 x 16.11m chase tender AHPO III: Wajer 55HT - 3 X Volvo Penta IPS600 D6-435 HP Engines top speed 38 knots, range 400nm, hard top with sliding roof, automatic extendable swim platform that doubles as a gangway. (Mediterranean only) 2 crew + 18 guests

1 x 15.24m chase tender: Formula 500 Super Sport Crossover - Mercury 7.6L V12 600 HP Verano Outboard engines with two-speed transmission - Large swim platform, full bow lounge. (Available in the Caribbean only)

1 x 11.53m AHPO IV: Skipper - BSK 38NC powerboat 2x500HP. Max 80 knots. No roof. 2 crew + 10 guests

1 x 7.62m AHPO V: Super Air Nautique G25 Ski Boat . 630 max horsepower. 2 crew + 14 guests

2 x 6.20m Yachtwerft Meyer Rescue Boat, 6 passengers incl. crew

TOYS

4 x Jet Ski - SeeDoo GTX-230

2 x Jet Ski Rescue Sled - JET TECH

6 x SEABOB F5 SR

2 x Electric Surfboard - Awake Board - RÄVIK S

2 x Electric Foilboard - LIFT eFoil 5.6 cruiser

2 x Wakeboard - Ronix Boot Boards Size 144 & 138

1 x Wakeboard - Jobe Vanity Size 131

1 x Wakeboard - Ronix - DISTRICT 129 Boys

1 x Wakeboard - Ronix - AUGUST 120 Girl's

1 x Wakeboard - Ronix - Volcom Sea Captain Wakesurfe, Size 4'10

1 x Wakeboard - Ronix - Women's Koal Surface Sea Captain, Size 4'4

1 x Wake Foilboard - Ronix - Koal Surface 727

2 x Water Skis - Airhead - Combo

1 x Enforcer Kneeboard - O'Brien

1 x Fly boots Zapata Flyboard

1 x Underwater Towing Wing - Subwing - White Flame

1 x Wingfoil Board - Core ROAMER 110 I

3 x Wingfoil Wings - Core XC for all conditions

4 x Kitesurfing - RRD Kites 7m, 9m, 12m, 15m

2 x Kitesurfing-RRD Twin-Tipboards 138 & 145

Custom FunAir inflatable waterpark

1 x Tender Dock for Carbon Craft Tender

2 x Jet Ski Dock

1 x Custom floating Island with 6 Loungers

Custom Playground - FunSize

1 x Tower

1 x Slide

2 x Entry swim steps

1 x Jr. Blob

1 x Custom Joust

1 x Custom Bouncer Classic

2 x Custom Mat - Water 4m x 1.5m x 5cm

5 x Paddle Board - Red Ride -10'6"

2 x Inflatable Kayak - Advanced Elements - Advanced Frame Expedition Elite - Blue

2 x Inflatable Kayak - Deschutes 130 - Orange

1 x Towable - Big Mable

1 x Towable - Great Big Mable

1 x Towable - Airhead - Jumbo Dog

1 x Towable - Demon 2

Wide range of snorkelling and swimming equipment

Large selection of kids and adult beach and pool games



Advertising of the above vessel in either printed publications on the internet or in any other medium is not permitted without prior permission from the Owner via the Central Agent.

All particulars are given in good faith and are believed to be correct but cannot be guaranteed.

SPECIFICATIONS

BEACH SET-UP

- 2 x Custom Carbon Beach Table, each for up to 6 Guests - Multiplex
- 4 x Foldable Camping Table, each for up to 6 Guests
- 16 x Summit Folding Director's Chair - SD346
- 6 x Summit Folding Adjustable Recliner - SD343
- 6 x Summit Folding Footrest/Table With Cushion And Tray - SD344
- 10 x Beach Parasols - Tuuci Ocean Master M1 Crescent
- 4 x Easy Up Platinum 3x3 m Gazebos
- 1 x Outdoor Revolution Pronto 4 Section Windbreak
- 2 x Soundboks Gen.3 Wireless Bluetooth Speakers
- 2 x Weber - Summit Kamado E6 Charcoal Grill / BBQ
- Selection of Games & Toys: Beach Volleyball, Cornhole, Cricket, Paddle Tennis, Football, American Football, Disc Golf

GYM EQUIPMENT

- 2 x Peloton bikes
 - Full set of dumbbell weights from 2kgs-24kgs
 - Kettlebells 6/8/10/12kg
 - Various blocks and straps for yoga
- Technogym:
- Manual treadmill
 - 2 x Normal motorized treadmills
 - 2 x Elliptical machines
 - Barbell machine
 - 2 x Chest press machine
 - Shoulder press machine
 - Leg extension machine
 - Leg press machine
 - Leg curl machine

KEY FEATURES

- Outstanding spa
- Infinity pool
- Duplex Master suite
- Accommodation for 16
- Full-sized gym
- Two Limo tenders
- Touch and go helipad



Advertising of the above vessel in either printed publications on the internet or in any other medium is not permitted without prior permission from the Owner via the Central Agent.

All particulars are given in good faith and are believed to be correct but cannot be guaranteed.