



*Amaryllis*





**T**imeless elegance.

With an atmosphere and ambience which are both breathtaking and calming... Raymond Langton Design has translated the owner's love of Belle Epoque, Art Deco and Art Nouveau into an exquisite interior where every detail is bespoke and lovingly hand crafted.

The meticulous craftsmanship and attention to detail in the styling are equalled by the quality and exacting standards of the engineering. The 78 metre Amaryllis, built to exceedingly high specifications by Abeking and Rasmussen and featuring cutting edge technology throughout, slices effortlessly through the water at a cruising speed of 14 knots.







Travel in style.

A beautifully hand crafted wooden limousine tender by Graf will deliver you smoothly to the expansive aft-deck beach club. On the sundeck a 5m x 2m Jacuzzi pool is an attractive feature at any time and never more so than at night when lit with shifting coloured light.



Numerous deck areas. Across Amaryllis' five decks, many colourful and comfortable areas offer an impressive variety of opportunities to dine, entertain or simply relax in sun or shade. The main deck features a seaward facing sofa from which to take in the ever changing views which are enhanced by special mood lighting that bathes the ceiling in coloured light. The owner's deck boasts a private terrace with a panoramic outlook and on the bridge deck, amethyst onyx panels and pendant chandeliers afford a luxurious transition from interior to exterior.













**D**ine on deck.

The aft bridge deck is the main exterior dining location and the place to enjoy fresh local produce or freshly caught fish and seafood. The chef will conjure up magical dishes to please every palate and an impeccable and experienced crew are there to cater to guests' every whim.



Elegant dinner parties in the lavish dining room.

Experience haute cuisine and the very finest service aboard Amaryllis. Creative menus are accompanied by spectacular wines to ensure an exquisite dining experience in this panoramic dining room. Continuing the Art Nouveau theme and colour palette from the adjacent piano lounge, the room's dramatic centrepiece is a glittering crystal and bronze chandelier above a circular Ziracote dining table.









## Piano lounge.

This room in its entirety encapsulates the glamour, vibrancy and technological excitement of the Belle Epoque era. The sweeping arc of the ceiling, floating on columns of crystal light, both frames and highlights the intricate marquetry of the walls and furniture. The self-playing Schimmel Pegasus piano is itself a work of art and one that again captures the aesthetic and ingenuity of that flamboyant time.





**M**ain saloon and sky lounge.  
The lounges are light and airy with the warm ambience of honey coloured sycamore and beautifully crafted Macassar ebony furniture. Carefully integrated mood lighting perfectly complements each area, and in the sky lounge a 103" plasma television provides guests with a true cinematic experience.





wner's suite,

The master bedroom features panoramic windows, a deep lounging sofa and a gloriously opulent hand carved English walnut Art Nouveau bed, whilst contrasting bamboo carpet is light and luxurious underfoot.

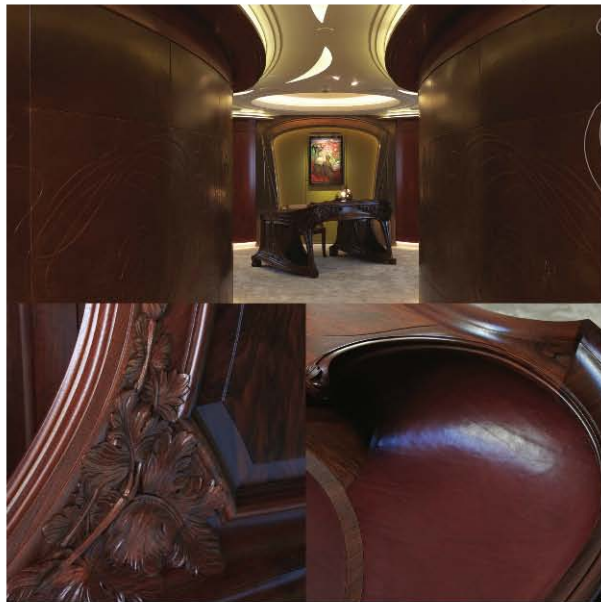
Stunning onyx clad his and her bathrooms and separate dressing rooms are accessed through hidden doors.











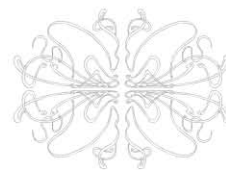
#### Owner's study,

The owner's state rooms are entered through a dramatic curved lobby with walls wrapped in sculpted leather, leading into a full beam study. At its heart sits an impressive copy of an original Art Nouveau desk, one of the best examples of the extensive Silver Lining furniture on board. Carved from just two pieces of extremely rare English walnut dried by Silverlining for over 7 years and with leather embellishment, the desk took two craftsmen over a year to sketch, prototype, construct, carve and finish. Silverlining also created a bespoke chair from the same rare materials, which pairs perfectly with the desk.









**V**IP suite,  
The Art Nouveau theme continues  
and here introduces a Japanese  
influence. Soft taupe shades and silver highlights  
provide a calm and relaxing ambience. Sculpted  
leather ceilings and automatic Shoji screens  
reveal large panoramic windows and Kimono  
marquetry artwork by Silverlining masks the  
large television.





**G**uest suites.  
The four unusually spacious Art Deco inspired suites, each with walk-in wardrobes, provide further guest accommodation. Exotic period finishes such as stingray shagreen parchment, Macassar ebony, and beautiful Italian marble are used to create interiors that are both striking and harmonious.





**A**ction-packed adventure.

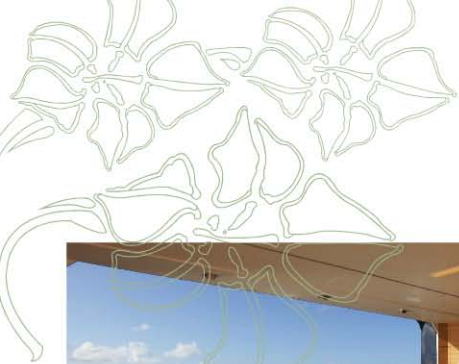
The comprehensive collection of toys includes the beautifully hand crafted limousine tender by Graf, a professional level wakeboard/waterski Mastercraft tender and a lightweight jet ski designed by a former world champion. The 8.8m Pascoe Beachlander tender with extendable pasarelle allows larger parties to island-hop in style, delivering guests straight on to the sand.











**R**elax in luxury. The Japanese influence is particularly striking in the beach club, which incorporates ash and elm with accents of fumed oak. This calm and tranquil area opens on to the sea on two sides and features an Asian spa with plunge pool, sauna, steam room, massage area and gym with a complete complement of equipment.





Sun Deck



Bridge Deck



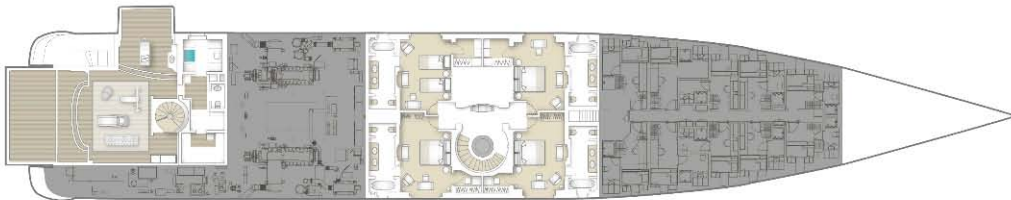
Upper/Owner's Deck



Main Deck



Lower Deck



## Specifications.

|                    |                       |
|--------------------|-----------------------|
| Length:            | 78.4m (257'3")        |
| Beam:              | 12.4m (40'8")         |
| Draft:             | 3.4m (10'11")         |
| Year Built:        | 2011                  |
| Builder:           | Abeking & Rasmussen   |
| Exterior Designer: | Raymond Langton       |
| Interior Designer: | Raymond Langton       |
| Classification:    | Lloyds Register + MCA |
| GT:                | 2108                  |
| Flag:              | Cayman Islands        |

### Machinery.

|               |                              |
|---------------|------------------------------|
| Main Engines: | 2 x Caterpillar 3516B 2030hp |
| Generators:   | 3 x Caterpillar 412 kW       |
| Stabilisers:  | Quantum Zero Speed           |

### Capacities.

|                   |           |
|-------------------|-----------|
| Fuel (max):       | 187,000l  |
| Fresh Water:      | 60,000l   |
| Max Speed:        | 16.5knots |
| Cruising Speed:   | 14knots   |
| Fuel Consumption: | 550lph    |

### Accommodation.

|        |                                  |
|--------|----------------------------------|
| Guests | 12 guests in 6 double and 1 twin |
| Crew:  | 23                               |

### Entertainment.

Kaleidescape video on demand  
Crestron Controls  
LCD/Plasma televisions in all areas  
V-Sat Communication / Satellite TV  
iPod Docking Stations

### Communication.

Wifi throughout  
Satellite communications  
Sailor-VHF  
Simrad AIS  
DGPS MX-Marine navigation receiver  
Raytheon black box radar

### Special Features.

Piano lounge with Schimmel auto-play piano  
Elevator from cabin deck to bridge deck  
Advanced mood lighting throughout

### Tenders & Toys.

Graf 9m Ipanema custom wooden tender with Volvo 370hp  
Master Craft 6.6m X25 wakeboard tender  
Pascoe 8.8m Beachlander with Volvo 370hp  
Yamaha FZS jetski  
Yamaha SJ700 Lightweight Superjet jetski  
Wakeboards  
Fishing equipment  
Barbeque

### Deck Facilities & Amenities.

5m x 2m Jacuzzi pool on sundeck  
Beach Club:  
Spa with sauna and steam room  
Plunge pool  
Gym  
Various Inflatable Toys  
Water Trampoline  
Jelly Fish Net Pool

### BROCHURE

Photography: Ed Holt  
Design and Production: [www.QLuxuryMedia.com](http://www.QLuxuryMedia.com)











*Amaryllis*

