

B2



85.6m (280' 8") | Abeking & Rasmussen | 2009/2022



Beach Club



Beach Club



Beach Club



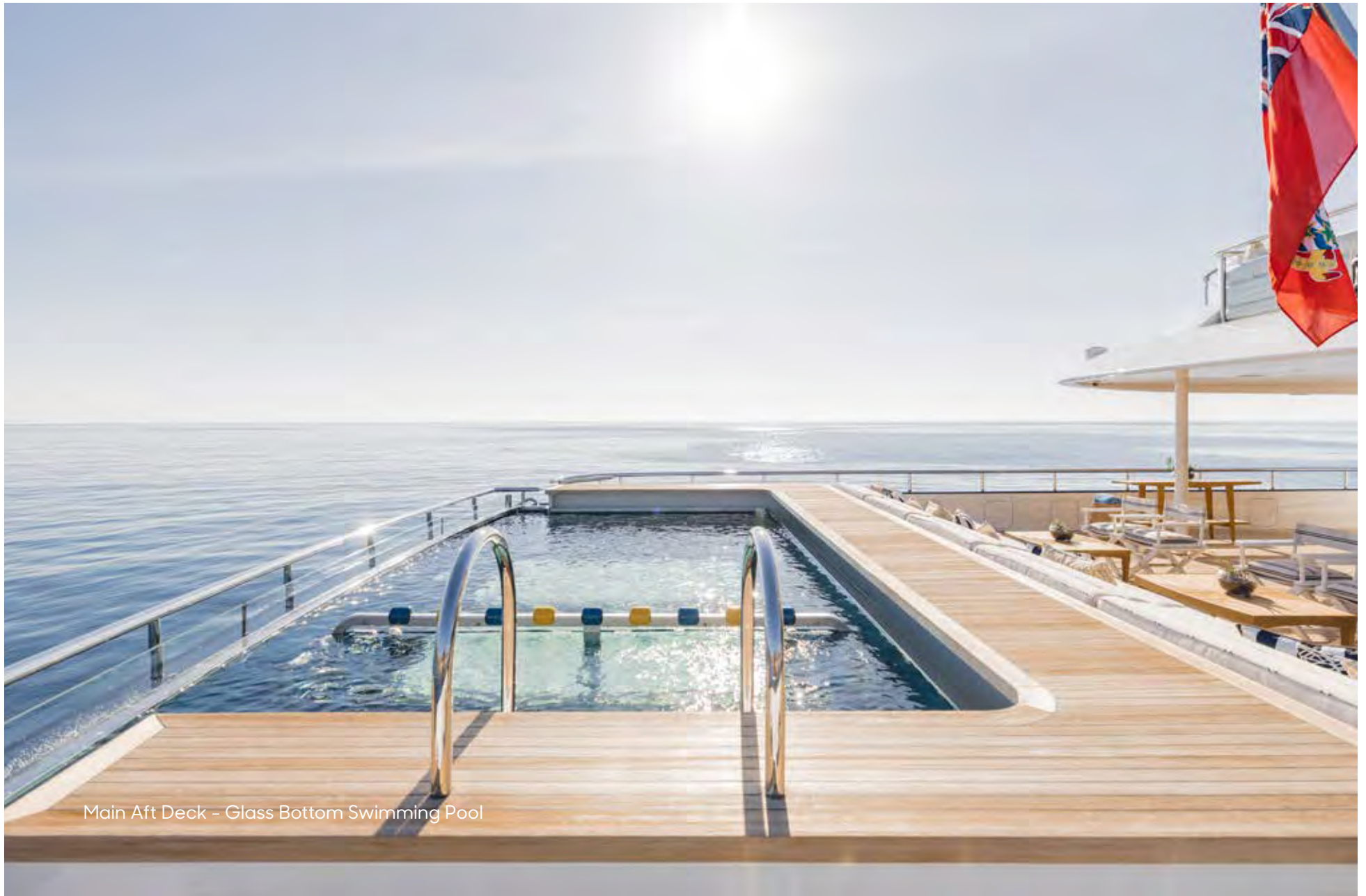
Beach Club



Main Aft Deck



Main Aft Deck



Main Aft Deck - Glass Bottom Swimming Pool



Main Salon



Main Salon



Main Salon



Master Stateroom



Master Stateroom





Master Bathroom



Master Bathroom



Master Bathroom



Owner's Study



VIP Cabin



VIP Cabin



VIP Cabin Bathroom



Main Deck - Double Port Cabin 1



Main Deck - Double Port Cabin 2



Main Deck - Double Port Cabin 2 Bathroom



Main Deck - Double Port Cabin 3



Main Deck - Double Starboard Cabin 1



Main Deck - Double Starboard Cabin 2



Main Deck - Double Starboard Cabin 2 Bathroom



Main Deck - Double Starboard Cabin 3



Lower Deck - Double Port Cabin



Lower Deck - Double Port Cabin Fwd



Lower Deck - Double Port Cabin Fwd Bathroom



Lower Deck - Double Starboard Cabin



Lower Deck - Cinema Room



Lower Deck - Cinema Room



Upper Deck - Spa





Upper Deck - Dining



Upper Deck - Dining





Bow



Sky Lounge



Sky Lounge



Sky Lounge



Bridge Deck - Aft



Sun Deck



Sun Deck



Sun Deck



Sun Deck - Jacuzzi



Sun Deck - Jacuzzi



Elevator



Elevator



Bridge

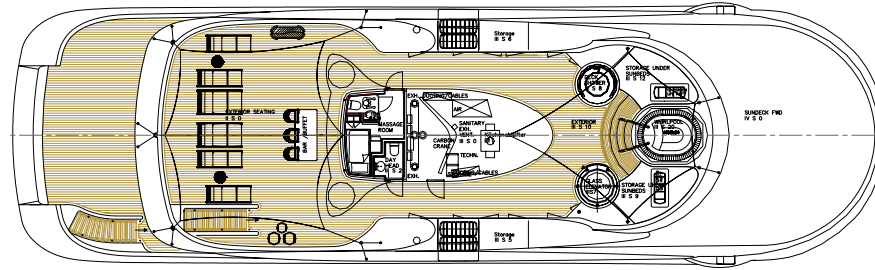




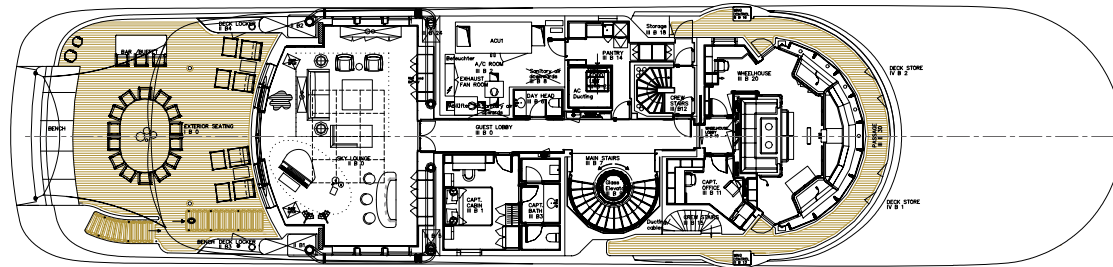




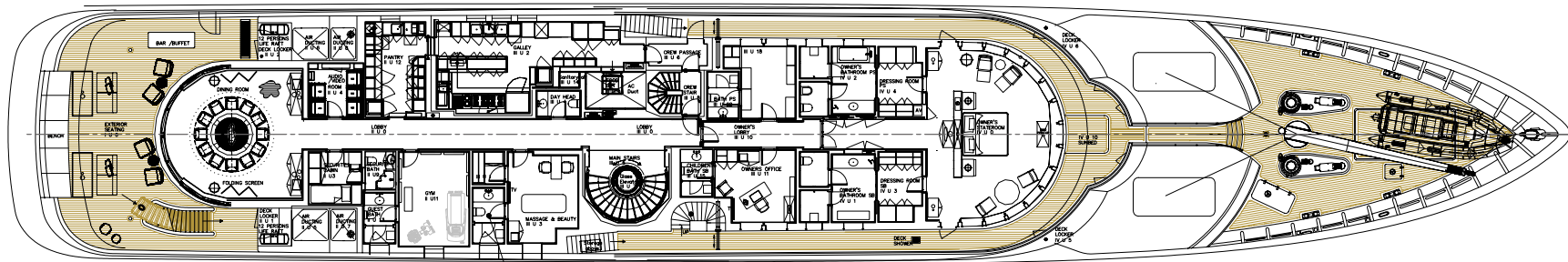
General Arrangement



Sun Deck

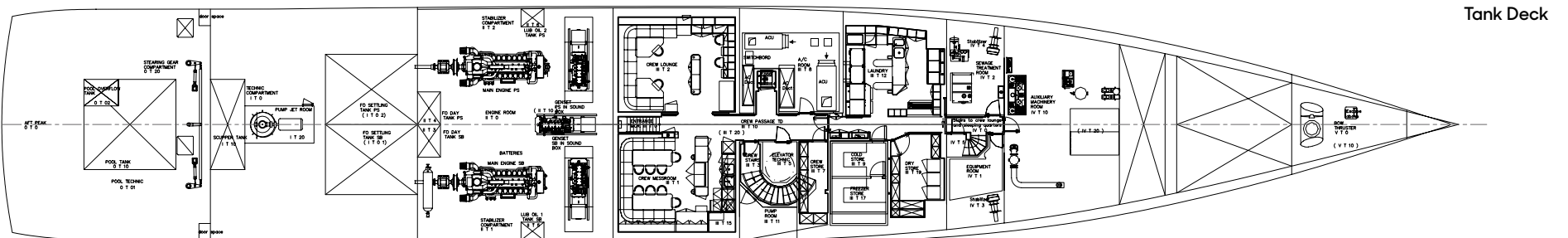
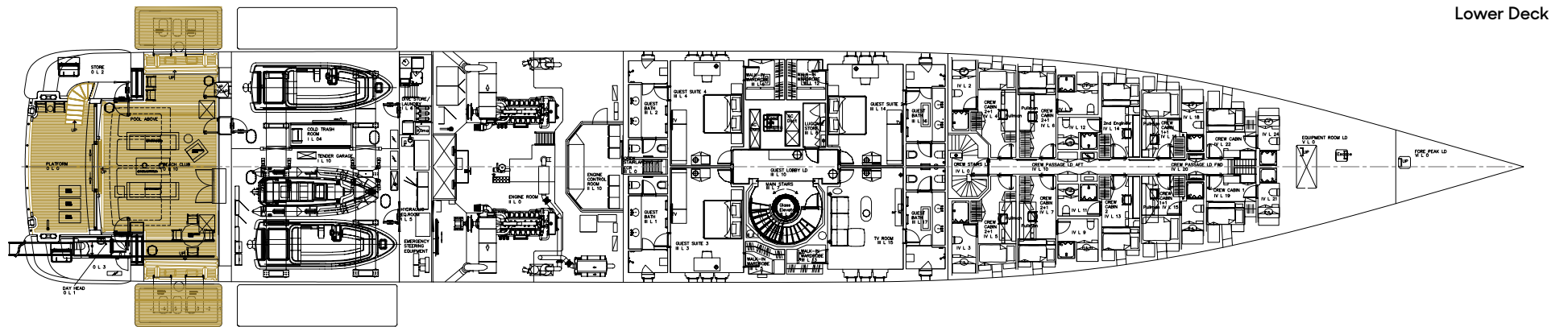
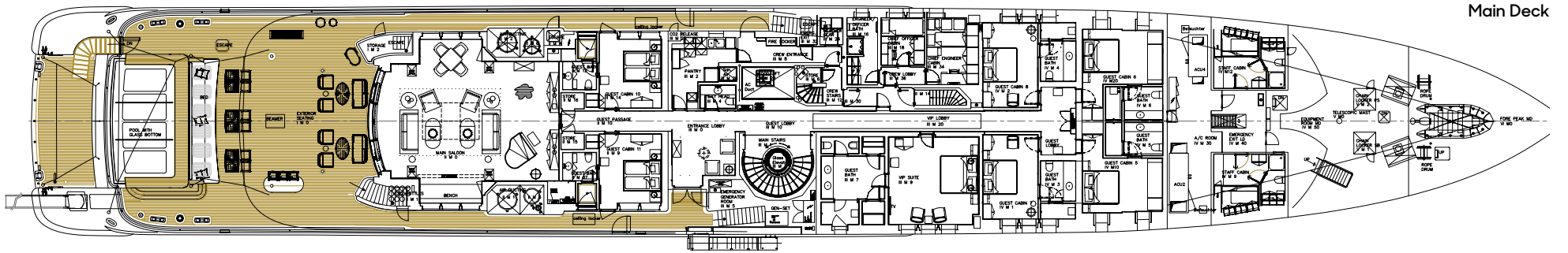


Bridge Deck



Upper Deck

General Arrangement



Specifications

Dimensions

Length	85.6m (280' 8")
Beam	12.4m (40' 8")
Draft	3.2m (10' 6")

General

Year	2009/2022
Builder	Abeking & Rasmussen
Exterior Design	Reymond Langton Design Ltd
Interior Design	Reymond Lagnton Design/Winch Design
Hull Construction	Steel
Superstructure	Aluminium
Gross Tonnage	2150

Accommodation

Number of Cabins	11 Cabins (9 Double, 2 Twin)
Total Guests	12
Total Crew	22

Technical Information

Engines	2 x Caterpillar 3516 DITA 1,999 hp x 2 (3,998 hp)
Generators	2 x TBC
Fuel Capacity	160,000 litres
Water Capacity	35,000 litres
Fuel Consumption	528 litres/hr
Range	6690 nm
Maximum Speed	16.5 knots
Cruising Speed	15 knots
Stabilisers	At anchor and underway

Certifications

Flag	Cayman Islands
Port of Registry	The Creek
Class / MCA	Lloyd's Register

Tender and Toys

- 1 x YachtWerft Mayer - 20.25' (12 pax + 2 crew capacity)
- 1 x Rib T75 - 7.5m
- 1 x Zodiac Rescue Tender

Watersports

- 5 x Water Scooters (battery powered)
- 2 x Elliptical paddle boards
- 2 x SUPs with paddles
- 2 x Kayaks

Various

- Air Conditioning
- WiFi

Weekly Charter Rates - MYBA Terms

Summer 2022

- €950,000 per week (high rate)
- €850,000 per week (low rate)

Winter 2022/2023

- \$950,000 per week (high rate)
- \$850,000 per week (low rate)

