



MY Barbara

Elegant lady for memorable sailing cruise

ACCOMMODATION IN 16 LUXURY CABINS

All cabins are extra comfortable and above sea level with one or two windows. Each cabin has two twin beds (90 x 180 cm), one double bed (160 x 180 cm, 180 x 180 cm) or one double bed (160 x 180 cm) plus one extra single bed (90 x 180 cm). Cabins are with air-conditioning, LCD-TV, free wireless internet, working tables, mirror, safety deposit box, night lamps, wooden wallboards, chair, electricity supply, safety and fire alarm installations, sanitary facilities, toilet and shower with cabin. Cabins are located on the lower deck and on the main deck.

CHARTER PRICE OF WHOLE VESSEL INCLUDES

- ◉ 7 day cruise trip around the Dalmatian coast and islands
- ◉ 7 members of the crew / room service every day, changing of the 3 towels every second day
- ◉ Registry of guests / giving information, directions
- ◉ Welcome drinks
- ◉ VAT
- ◉ Agents commission
- ◉ Port taxes
- ◉ Use of deck chairs and sundeck beds
- ◉ Use of hydro-massage pool for 6 persons
- ◉ Transfer with tender

DECK PLAN

LOWER DECK CABINS

- 01 – double bed+1/1extra, 19,5 m²
- 02 – double bed, 15,2 m²
- 03 – double bed, 13,3 m²
- 04 – double bed+1/1extra, 19,5 m²
- 05 – double bed, 13,3 m²
- 06 – double bed+1/1extra, 15,2 m²

MAIN DECK CABINS

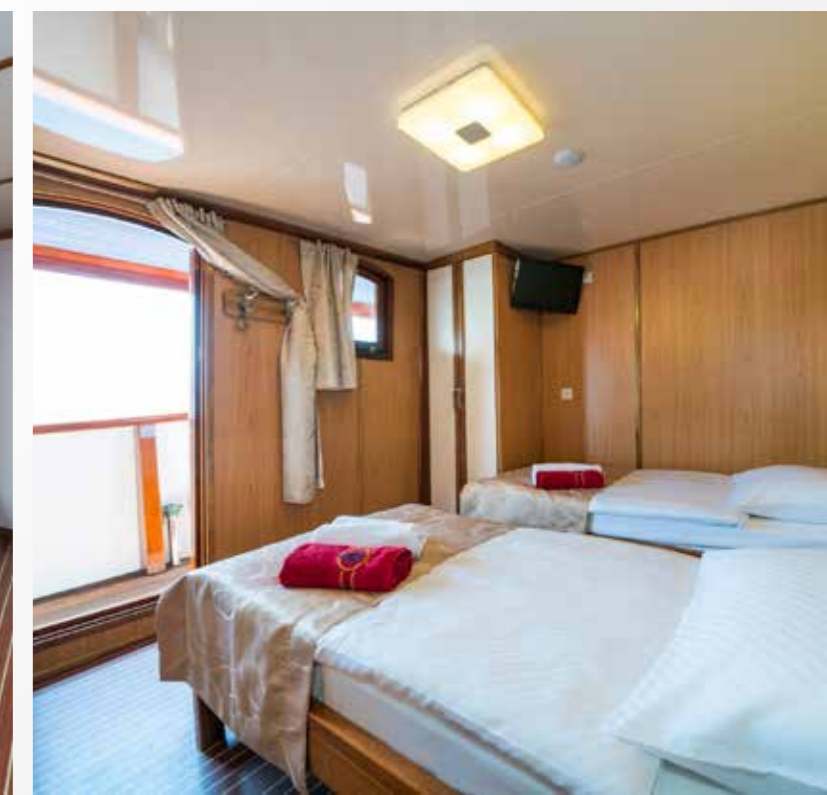
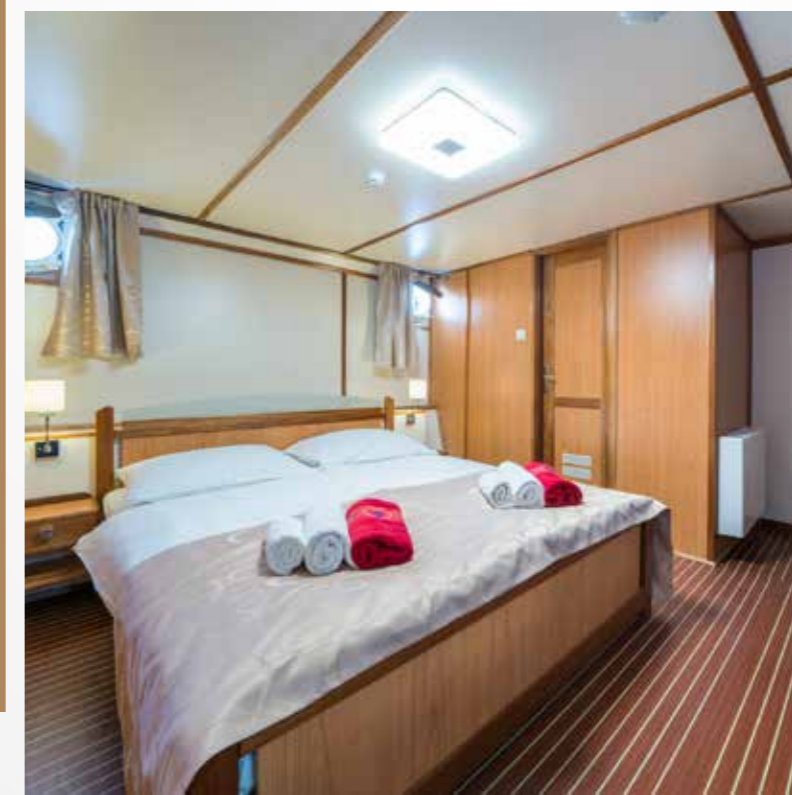
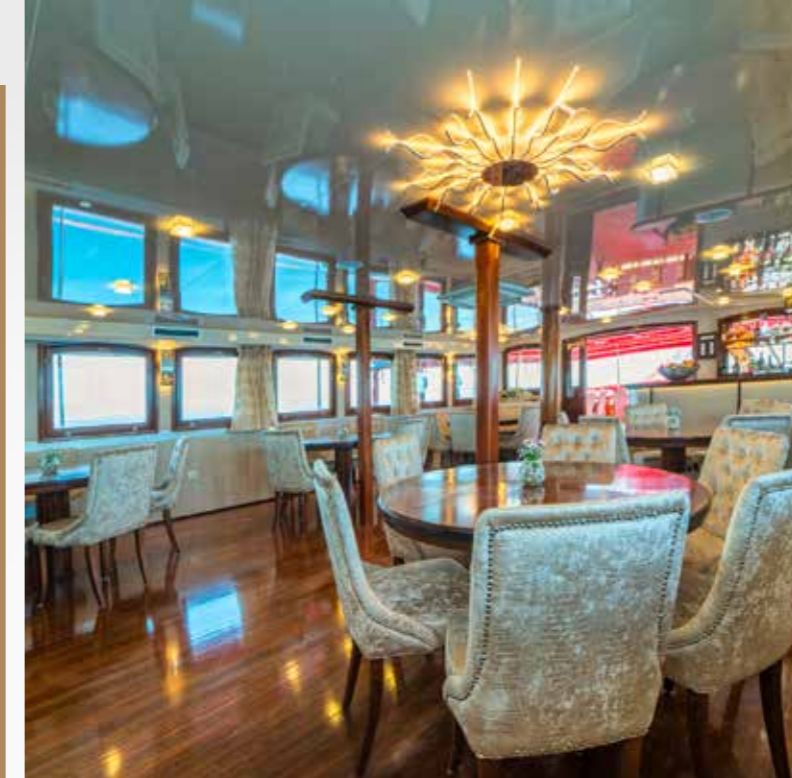
- 07 – twin beds, 12,0 m²
- 08 – twin beds, 12,0 m²
- 09 – twin beds, 14,2 m²
- 10 – twin beds, 14,2 m²
- 11 – twin beds, 13,5 m²
- 12 – twin beds, 13,5 m²
- 13 – double bed, 14,5 m²
- 14 – double bed, 14,5 m²
- 15 – double bed, 17,3 m²
- 16 – double bed, 17,3 m²

UPPER DECK

- ◉ Salon restaurant
- ◉ Terrace
- ◉ Salon for crew
- ◉ Kitchen
- ◉ Sun deck area
- ◉ Pool for 6 persons
- ◉ Sundeck beds
- ◉ Main bridge
- ◉ Bar

PUBLIC AREAS

- ◉ Outside terrace for 32 persons
- ◉ Inside restaurant for 32 persons
- ◉ Massage pool
- ◉ Massage room sauna
- ◉ 200 m² sundeck area





MY Barbara

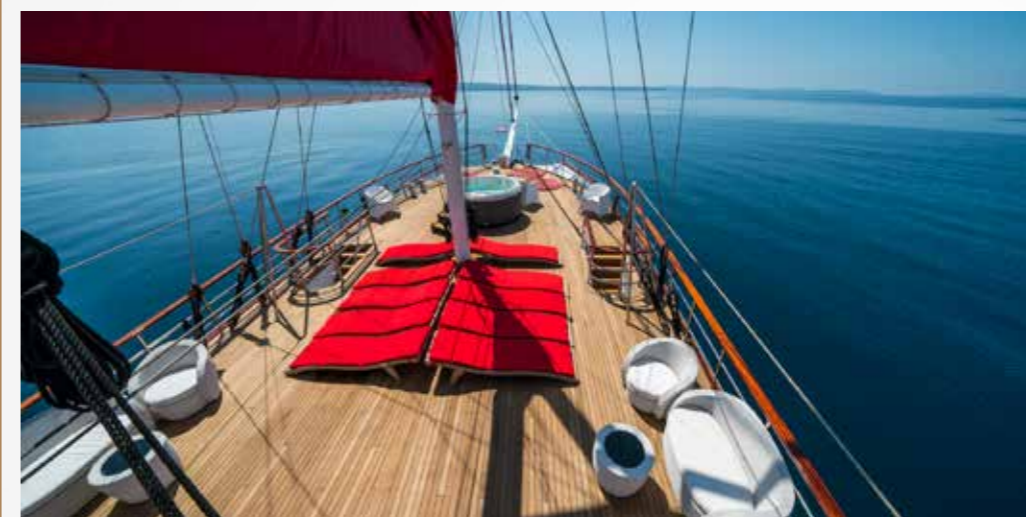
OPTIONAL SERVICES

- ◉ Cruise manager on board
- ◉ Selection of menus
- ◉ Creation of own cruising route
- ◉ Guided tours
- ◉ Transfers
- ◉ Hiking
- ◉ Holistic wellness cruise
- ◉ Massage on board
- ◉ Food & Wine tours
- ◉ Winery presentations
- ◉ Incentive programmes/ Business meetings
- ◉ Events
- ◉ Weddings

FOOD OPTION

- ◉ Obligatory - Half board (breakfast plus 1 meal per day-lunch)*
- ◉ Full board (breakfast plus 1 meals per day plus two dinners)*

* included dinner first night and Dalmatian dinner last night of the cruise.



TEHNIICAL SPECIFICATION

Year: 2006

Hull material: Stainless steel

Deck material: Teak

Superstructure: Mahogany

Type: Motor Sailor with three masts

Engine: 2 x MAN 380 HP

Propulsion: Bronze propeller, stainless steel propeller shaft

Speed: 10/13 Knots

Generator: SOLE Diesel 35 kW, installed silencer

Generator: ONAN 20 kW

Generator: Caterpillar 12 kW

Engine Shaft generators 2 x 42 kW

24 Volt electrical system

Automatic Inverter / Battery charger

220 Volt shore supply connection

Flag: Croatian

LOA: 41 m (134'5 ft)

Beam: 8,35 m (27'4 ft)

Draft: 3,50 m (11'48 ft)

Fuel tanks: 10 m³

Water tanks: 80 m³

Home port: Split, Croatia

BARBARA LAYOUTS

