

B A T O N R O U G E

# THE YACHT

BATON ROUGE IS A 62.5 METRE (205FT) YACHT WITH SIX DECKS, SEVEN CABINS AND PROBABLY MORE VOLUME FOR HER LENGTH THAN ANY OTHER 63 METRE YACHT ON THE WATER. She has the striking good looks of a Tim Heywood exterior and the elegant charm of a beach house interior by Redman Whiteley Dixon. Baton Rouge is a highly customised vessel, radically different in concept and built by Icon Yachts. The result is a spectacular yacht with a wealth of unique features beautifully brought to life by teams of specialist cabinet makers, craftsman and artists from around the world, hand-picked by an owner with a meticulous eye for exceptional quality and detail.

TIM HEYWOOD'S EXTERIOR DESIGN ACCOMPLISHES A BRILLIANT ILLUSION WITH STRONG LINES THAT LEAD THE EYE HORIZONTALLY, MAINTAINING A SENSE OF PROPORTION ABOUT HER EXPANDED SUPERSTRUCTURE.



BATON ROUGE IS FULLY STABILISED AND OPTIMISED FOR THE ULTIMATE SEAGOING EXPERIENCE.





# SUN DECK

THE SUN DECK HAS A HUGE LOUNGING AREA, BAR, BARBECUE, CIRCULAR BREAKFAST OR LUNCH TABLE WHICH SEATS EIGHT AND OVERHANGING BALCONY SEATING FOR FANTASTIC VIEWS. AT NIGHT THIS AREA HAS A COOL CLUB ATMOSPHERE WITH ITS OWN LIGHT SHOW AND DISCO.







The sun deck becomes the party deck by night. The sun loungers make way for dancing and the light show.





# BRIDGE DECK

RELAX AROUND THE POOL ON THE BRIDGE DECK. OR IF YOU PREFER TO WORK UP AN APPETITE, THE POOL HAS A JET STREAM TO SWIM AGAINST. THE SHOWER ROOM IS OPPOSITE THE BAR. BREAKFAST OR LUNCH CAN BE ENJOYED AT THE CENTRAL TABLE WHICH SEATS EITHER EIGHT OR TWELVE THANKS TO CLEVERLY DESIGNED LEAVES THAT UNFOLD.







# UPPER DECK

THE UPPER DECK IS THE PERFECT PLACE TO ENJOY LUNCH AL FRESCO, RELAX AFTERWARDS ON THE COMFORTABLE SOFAS AFT AND ENJOY THE VIEW. THE UPPER SALOON HAS THE LIGHT AND BREEZY FEEL OF A BEACH HOUSE. THERE IS A BAR AREA, A BESPOKE GAMES TABLE (WHICH IS A WORK OF ART) AND A DIGITAL PIANO TO ENTERTAIN. FORWARD IS THE OBSERVATION LOUNGE OFFERING PANORAMIC VIEWS. A SECOND GAMES TABLE AND A LIBRARY MAKE THIS A SPECIAL PLACE FOR EVENING RELAXATION WITH A GLASS OF COGNAC.





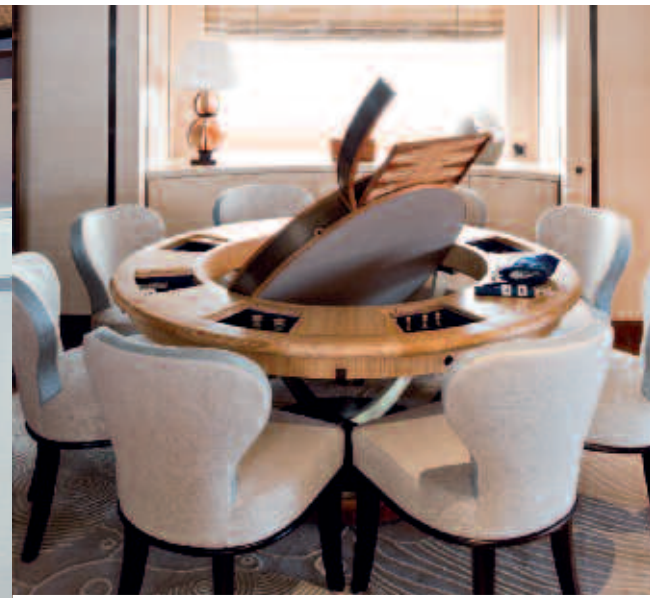


THE UPPER DECK SALOON BLURS THE EDGES BETWEEN INSIDE AND OUT WITH A FRESH, LIGHT BEACH HOUSE INSPIRED INTERIOR AND, UNUSUALLY, A CLEAR VIEW ALL THE WAY THROUGH FROM THE AFT DECK TO THE BOW GIVING A TREMENDOUS SENSE OF SPACE.











The observation lounge.



There are two VIP suites on the upper deck.



# MAIN DECK

THE ENTIRE DECK FORWARD OF THE LOBBY IS DEDICATED TO THE MASTER SUITE WITH TWO PRIVATE OFFICES, BLUE MARBLE BATHROOM, DRESSING ROOM AND VANITY. AFT IS THE DINING ROOM, MAIN SALOON AND THE DECK AREA WHERE THE LIMO TENDER IS STOWED.



THE MASTER SUITE IS A VAST 100 SQUARE METRES OF COOL, CALM, LUXURY.



Top left: Entrance hall with sliding doors to the bedroom and his study.  
Top right: Her study.  
Bottom left: His study.  
Bottom right: The stunning joinery in the entrance to the bathroom, left and vanity, right.

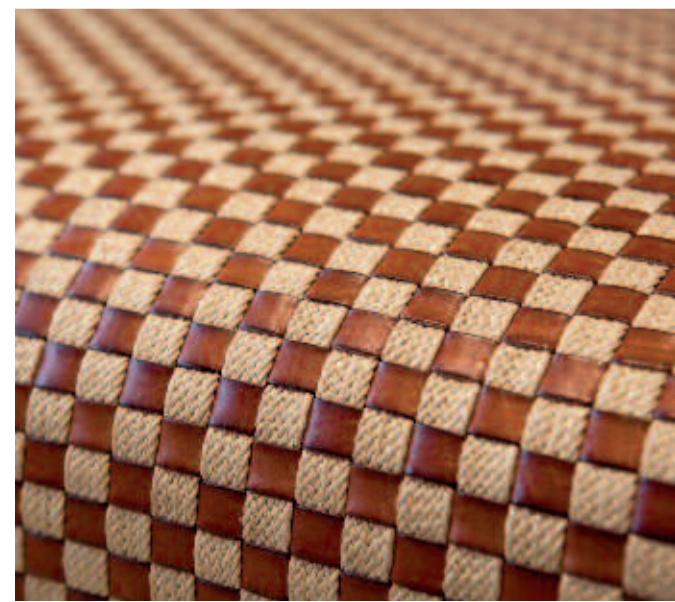
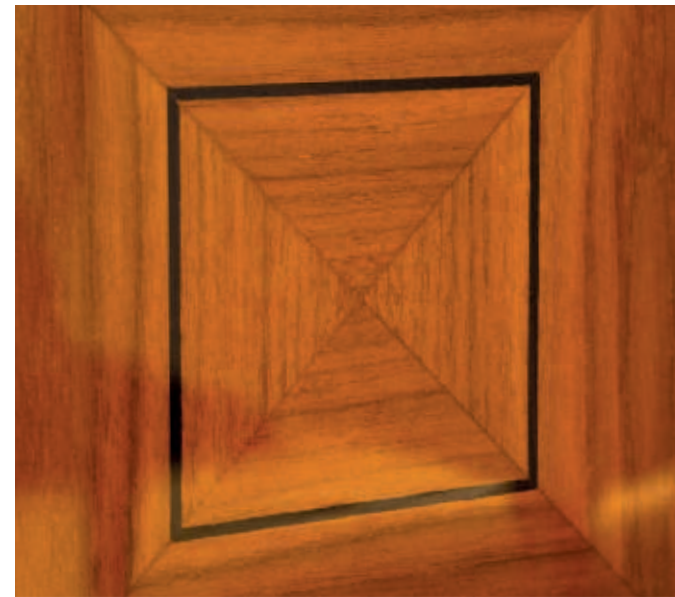
Top left: Entrance to the bathroom.  
Top right: The blue marble bathroom with frosted glass rain-shower room.  
Bottom left: Vanity.  
Bottom right: Bathroom detail.



The main salon.



The main saloon, portside seating.



Main saloon details and finishes.





The dining room can be closed off from the main saloon with sliding doors.

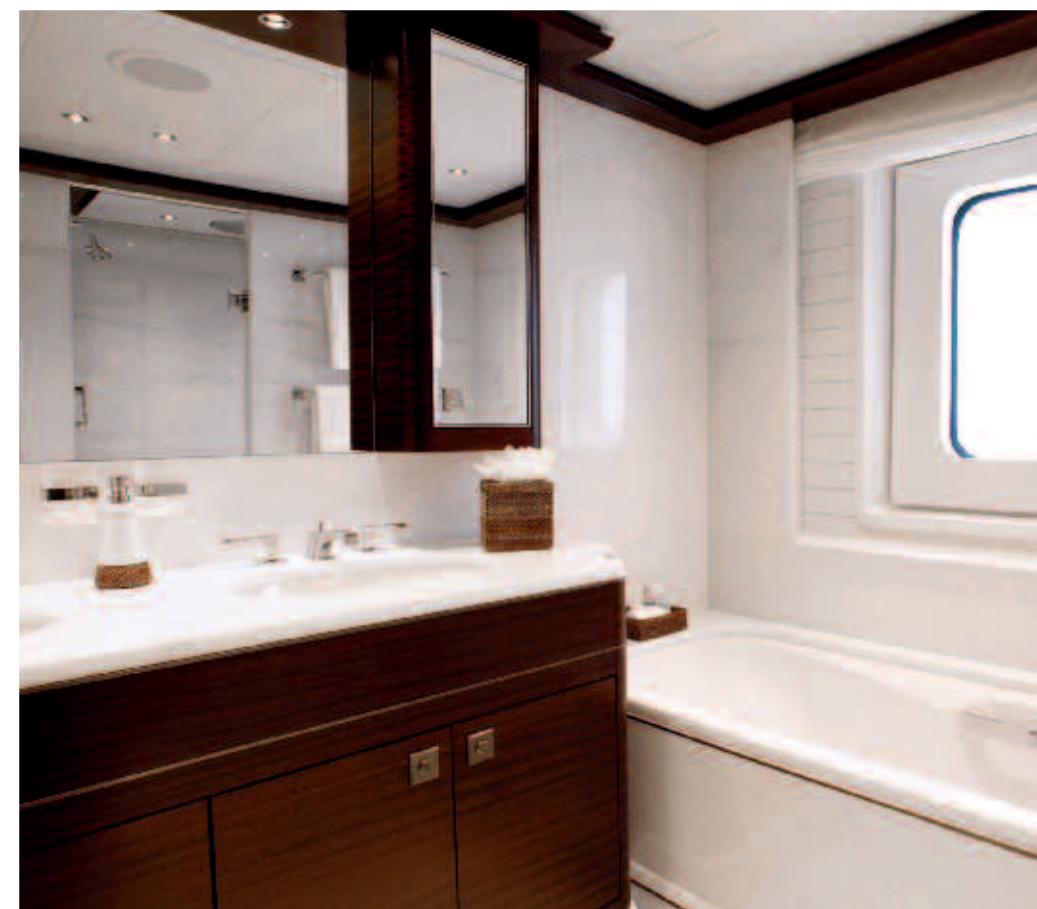


# LOWER DECK

THE BEACH CLUB ON THE LOWER DECK BRINGS YOU CLOSER TO THE WATER AND AN ARRAY OF WATERSPORTS TOYS. THERE IS A DEDICATED DIVE LOCKER WITH COMPRESSOR FOR DIVING ENTHUSIASTS, THE YACHT'S QUALIFIED DIVE MASTER CAN ARRANGE DIVING EXCURSIONS FOR GUESTS. A FULLY EQUIPPED GYMNASIUM IS LOCATED HERE IN THE BEACH CLUB WITH SHOWER ROOM AND SWIM PLATFORM SHOWERS. FOUR FURTHER INDIVIDUALLY STYLED EN SUITE GUEST SUITES - TWO WITH BATHS - ARE ALSO ON THIS DECK, MIDSHIPS.







There are four en suite guest cabins, two doubles and two twins which can convert as required.

# SPECIFICATION

<b>TYPE</b>	Twin Screw Diesel Displacement Yacht
<b>FLAG</b>	Isle of Man
<b>DIMENSIONS</b>	Length O.A. 62.5m (205ft) Beam 12.1m (39.8ft) Draft 3.7m (12.1ft)
<b>TONNAGE</b>	Gross 1,423 Net 426
<b>YEAR BUILT</b>	2010
<b>BUILDER</b>	Icon Yachts, The Netherlands
<b>EXTERIOR DESIGN</b>	Tim Heywood Design
<b>INTERIOR DESIGN</b>	Redman Whiteley Dixon
<b>NAVAL ARCHITECTURE</b>	Jouke van der Baan
<b>CONSTRUCTION</b>	Welded steel hull, aluminium superstructure
<b>CLASSIFICATION</b>	Lloyd's Maltese Cross 100A1 SSC yacht Mono G6 Maltese Cross LMC UMS
<b>MACHINERY</b>	
<b>MAIN ENGINES</b>	2 x MTU, 1885kW (2480hp)
<b>SPEEDS</b>	Cruising speed of about 14.5 knots Max speed of about 15.5 knots
<b>RANGE AT 12 KNOTS</b>	5,000nm
<b>GENERATORS</b>	Main – 2 x 212 kW, 1 x 154 kW Emergency – 1 x 96 kW
<b>ROLL CONTROL</b>	Quantum, with Zero Speed
<b>AIR CONDITIONING</b>	Heinen & Hopman
<b>COMMUNICATION EQUIPMENT</b>	
<b>SATCOM</b>	1 x Sailor Fleet Broadband 500 V-Sat - 1 x Seatel 4006 Sat TV - 2 x Seatel 4004
<b>ENTERTAINMENT</b>	Satellite television, Kaleidescape entertainment system throughout providing on-demand music and movies 54" screen in observation lounge 46" screen in main saloon 42" screens in upper deck saloon & owner's suite 36" screens in the 4 x guest suites 32" screen in VIP cabin 1 22" screen in VIP cabin 2 iPod docking stations Electric piano in the upper deck saloon

## ACCOMMODATION

**12 GUESTS IN 7 CABINS**  
**16 CREW**

### OWNER'S SUITE

Full width owner's suite located forward on the main deck with day lounge, private office, dressing room and en suite bathroom.

### GUEST SUITES

2 x double VIP cabins with en suite bathrooms located on the upper deck

4 x double cabins (2 of which convert to twins) with en suite bathrooms located on the lower deck

### CREW

3 x double cabins  
6 x twin-bunked cabins

## TENDERS & TOYS

### WATERSPORTS

1 x 8m Yachtwerft Meyer Limo tender  
1 x 7.3m Castoldi inflatable tender  
1 x 6.7m Pasco Rescue Boat  
2 x 2-man Seadoo waverunners  
2 x Jetskis  
2 x Seabobs  
2 x Segways  
Waterskis, wakeboard, tows and inflatable

### TOYS

2 x windsurfers  
2 x kitesurfs  
Diving equipment  
Snorkelling gear  
BATON ROUGE is an RYA training centre for guest certification to use the waverunners during the charter.

### JACUZZI DIP POOL

Oversize Jacuzzi dip pool with swim jet

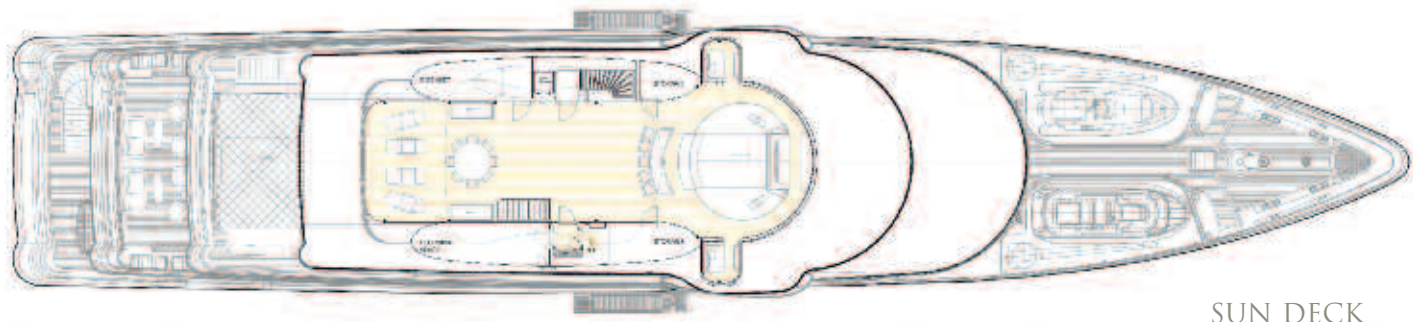
### GYMNASIUM EQUIPMENT

Exercise wall (TechnoGym)  
Running machine  
Exercise bike  
Weight bench  
Free weights

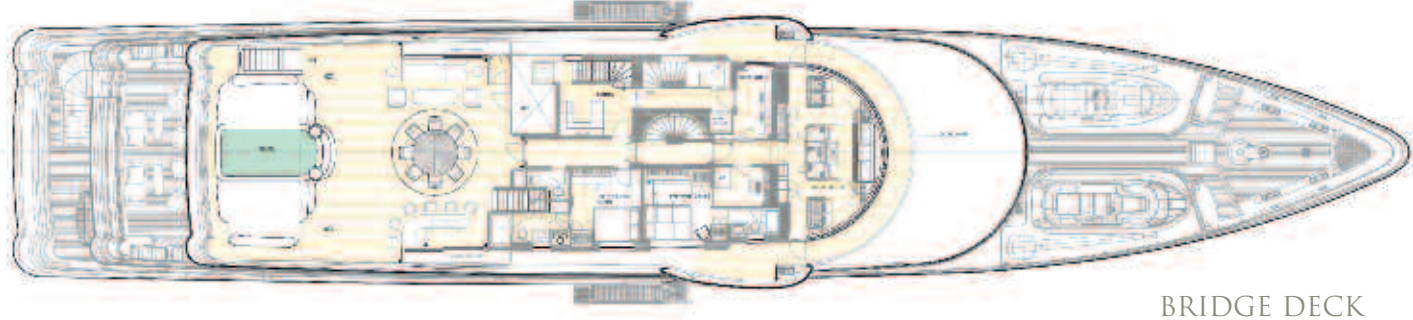
All particulars are believed to be correct but cannot be guaranteed.

Brochure co-ordination: Burgess.  
Photography, art direction & brochure:  
Wilkins Productions, UK  
Photograph page 27 Buggy Gedlek

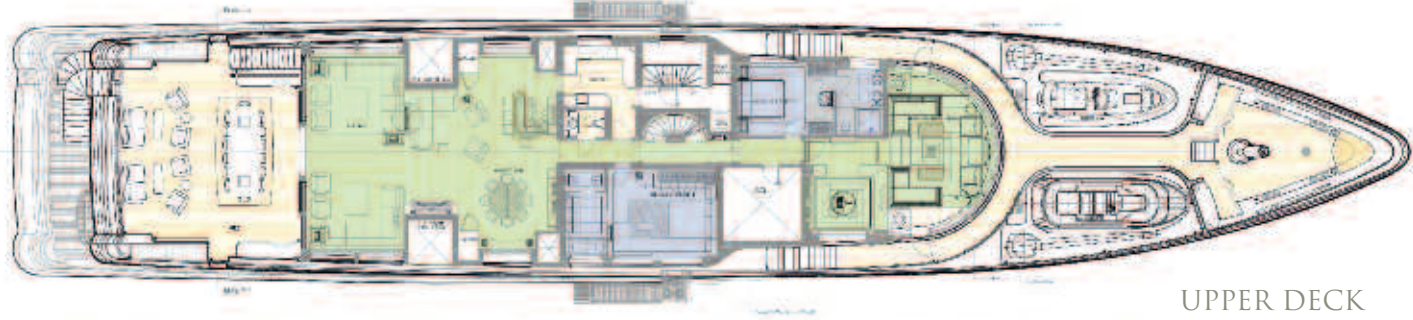
# DECK PLANS



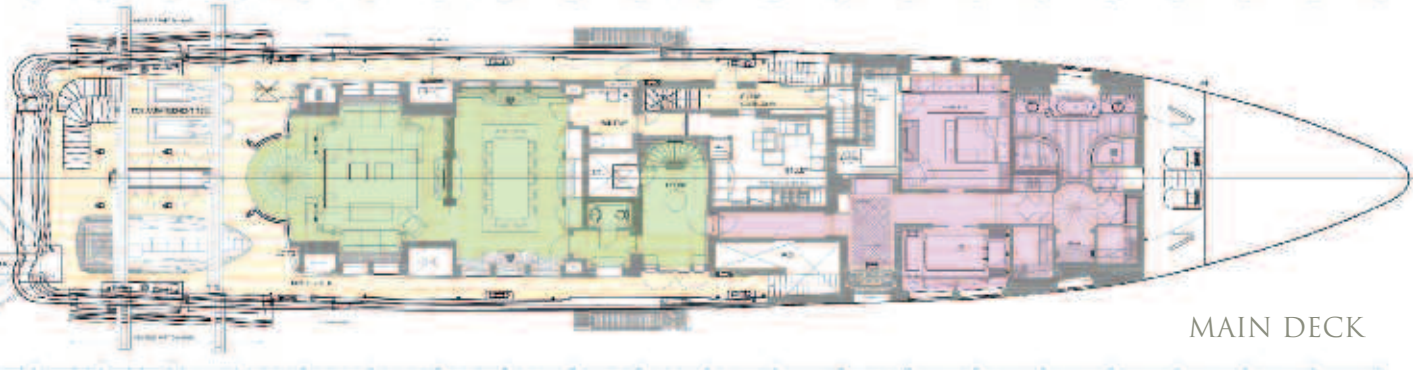
SUN DECK



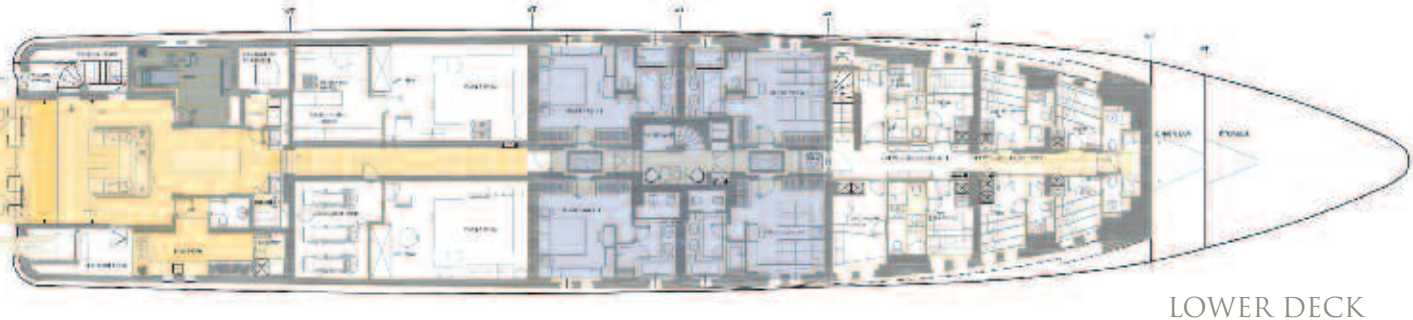
BRIDGE DECK



UPPER DECK



MAIN DECK



LOWER DECK

## KEY:

- LIVING AREAS
- OWNER'S SUITE
- GUEST CABINS
- SPA POOL
- GYM
- BEACH CLUB

