



# BELLA VITA

LURSSEN • 60M • 2010/2021

<b>BUILDER</b>	<b>LURSSSEN</b>
----------------	-----------------

YEAR	2010
------	------

<b>REFIT</b>	<b>2021</b>
--------------	-------------

LENGTH	60 M
--------	------

<b>BEAM</b>	<b>11.43 M</b>
-------------	----------------

DRAFT	3.5 M
-------	-------

<b>SPEED</b>	<b>12 KN</b>
--------------	--------------











**MAIN DECK**



MAIN DECK AFT



MAIN DECK AFT





MAIN SALON



MAIN SALON



MAIN SALON



MAIN SALON



MAIN SALON



DINING ROOM



DINING ROOM



GALLEY





MASTER OFFICE



MASTER OFFICE



MASTER STATEROOM



MASTER STATEROOM



READING NOOK



READING NOOK



MASTER BATHROOM

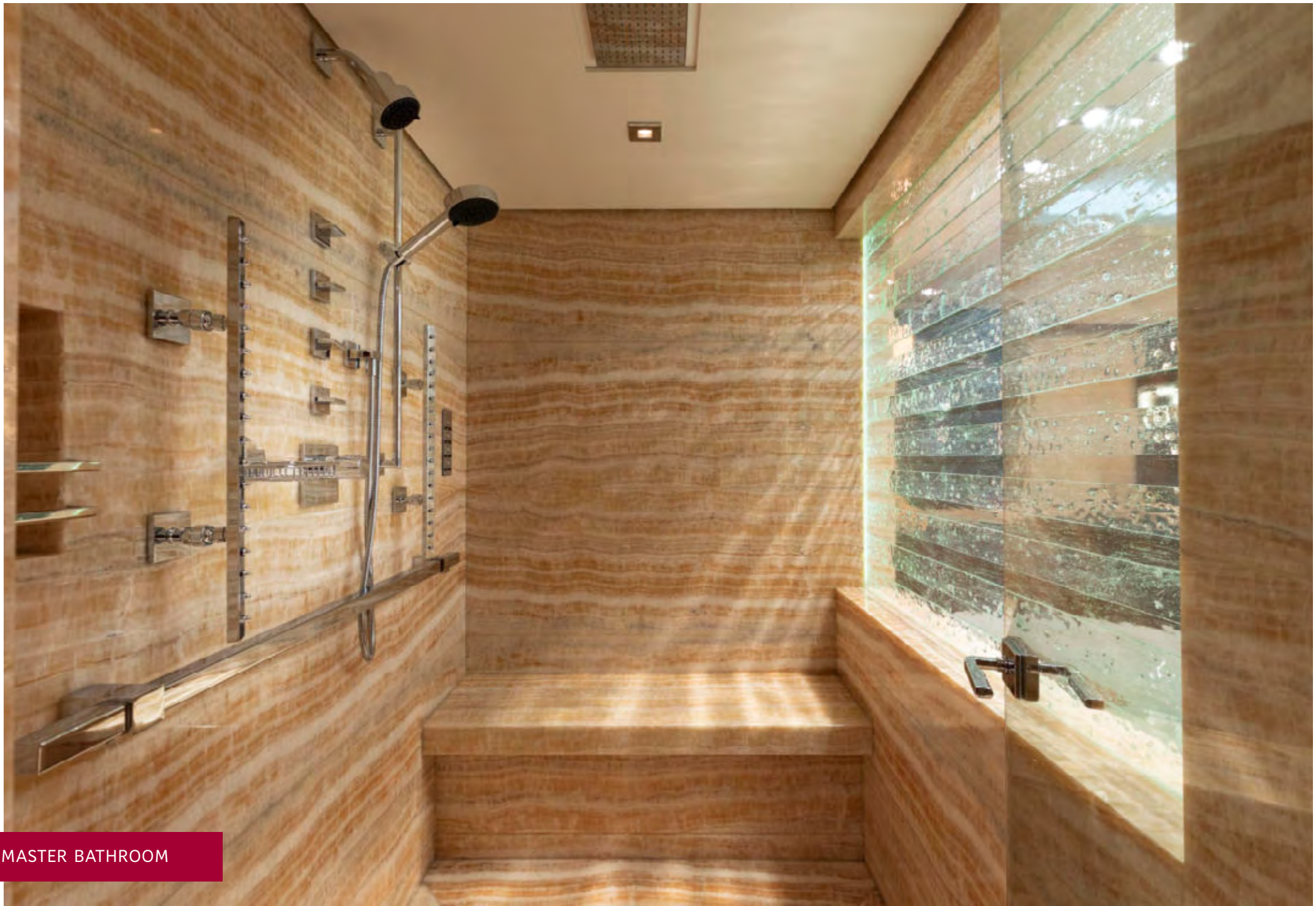


MASTER BATHROOM





MASTER BATHROOM



MASTER BATHROOM



**UPPER DECK**



UPPER DECK AFT



UPPER DECK AFT



UPPER DECK AFT



UPPER DECK AFT



SKY LOUNGE





SKY LOUNGE



SKY LOUNGE



SKY LOUNGE



SKY LOUNGE



SKY LOUNGE



SKY LOUNGE



FOYER



VIP CABIN





WHEELHOUSE



**SUNDECK**



SUNDECK



SUNDECK



SUNDECK



SUNDECK



GYMNASIUM



MASSAGE





SUNDECK



SUNDECK



SUNDECK



SUNDECK



SUNDECK



SUNDECK



**LOWER DECK**



FOYER





DOUBLE GUEST CABIN



DOUBLE GUEST CABIN



DOUBLE GUEST CABIN



DOUBLE GUEST BATH



DOUBLE GUEST CABIN



DOUBLE GUEST CABIN







## SPECIFICATIONS

---

### Overview

Yacht Type	Oceangoing Motoryacht
Builder	Lurssen
Year Built / Refit	2010 / 2021
Flag	Cayman Islands
Exterior Designer	Espen Oeino (Norway)
Interior Designer	Espen Oeino (Norway)

### Dimensions

Length	60 metres
Beam	11,43 metres
Draft	3.5 metres
Tonnage	1,218 gross

### Performance & Capacities

Max Speed	16 kn
Cruising Speed	12 kn
Range	5000 miles
Engines	2 x Caterpillar 3512B
Generators	280 kW Caterpillar C18
Fuel consumption	Dual Racor filters

### Materials

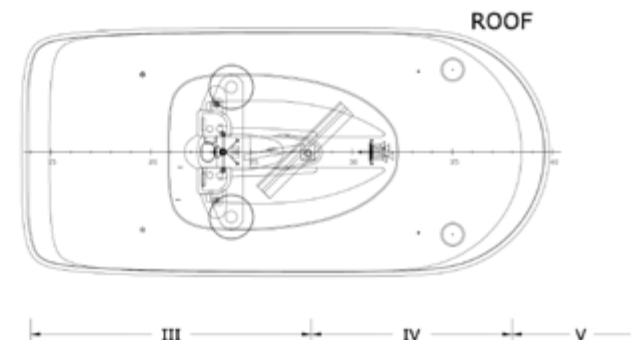
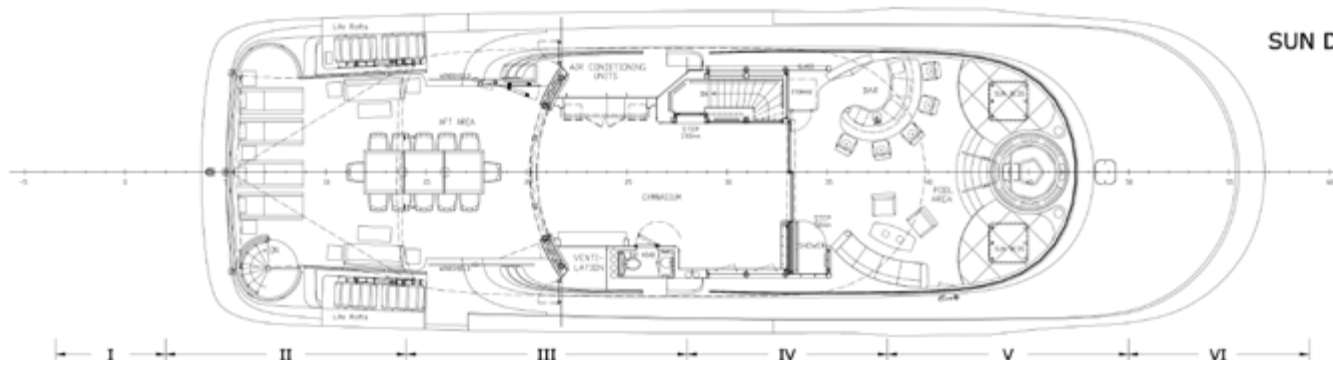
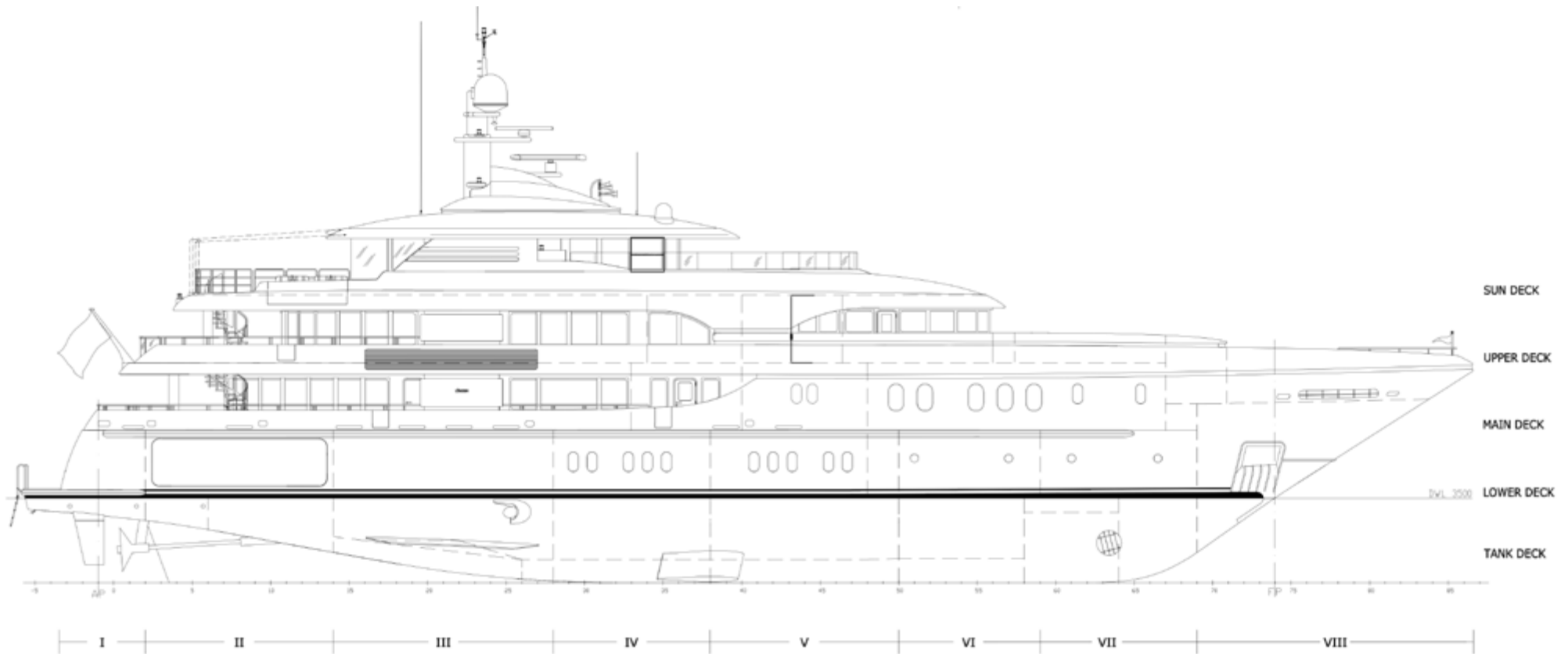
Hull type	Mono hull yacht
Hull Configuration	Displacement

### Accommodation

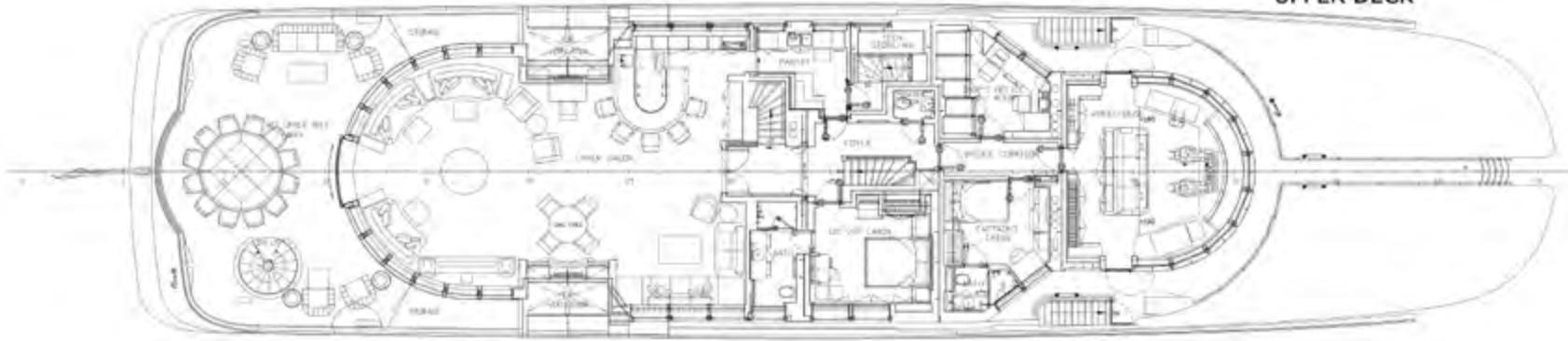
Guests	12
Crew	15 Crew in 8 cabins
Staterooms	6

### Tenders & Toys

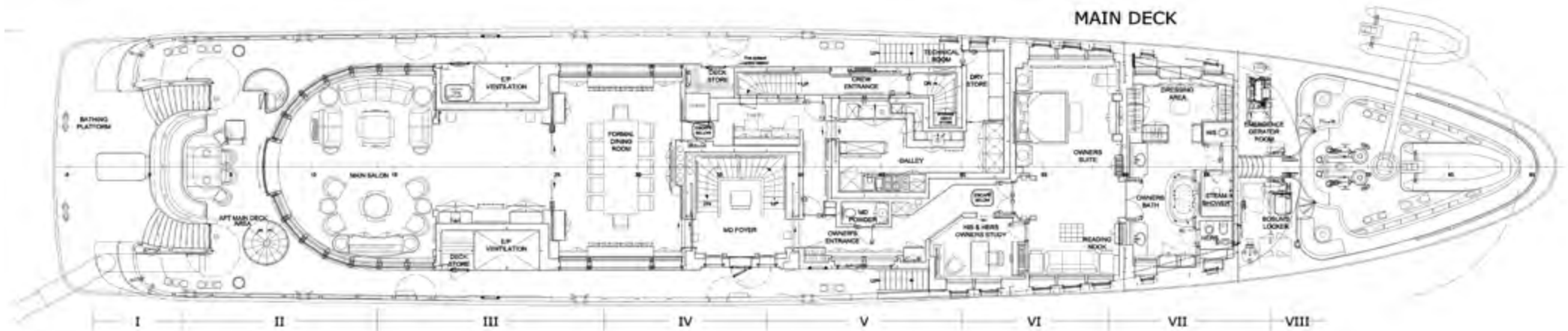
- (2)25'(7.5m)Vikal custom
- (1)Tender equipped with rescue boat
- Dive equipment and dive compressor
- (2)Yamaha water runners (2016)
- (2)SeaBobs -2017
- Fishing gear
- (3)Tandem kayaks;(2)Inflatable,(1)Rigid
- Water trampolines
- Towable banana boat
- Wakeboards, multiple sizes
- Waterskis, multiple sizes
- Towable tubes



UPPER DECK



MAIN DECK



LOWER DECK

