



EXCLUSIVELY FOR CHARTER



C

# Unparalleled Family Charter Experience

C is a 54.6m Baglietto superyacht that boasts a high-volume interior, versatile spaces for different age groups, and a fantastic onboard lifestyle. This full-custom masterpiece demands attention in all the right ways.









INTERIOR LIVING

# Modern & Luxurious

C's interior design utilises light-coloured woods, brass, lacquered panels, and cool marble alongside calming blue/green tones.

The main saloon is carefully designed to accommodate modern family life and features floor-to-ceiling windows and retracting glass doors that reveal a balcony to one side.

The sophisticated lounge is adorned with bespoke furniture by Italian designers Belvedere, alongside customised Minotti pieces. Every detail has been meticulously curated, from the plush new soft furnishings to the custom-designed carpets. On the upper deck, guests will find another glamorous lounge space with a projector for movie nights.







C MAIN SALOON









C UPPER SALOON





C UPPER SALOON





C UPPER SALOON



ACCOMMODATION

## Relaxed & Stylish

C can comfortably accommodate up to 12 guests across seven suites with incredible flexibility. The yacht has two matching elegant master suites and two VIP suites located on the main deck, and a large double cabin, twin cabin with trundle beds and pullman bunks, and a dedicated playroom/ children's cabin on the lower deck..







C MASTER CABIN





C VIP CABIN









C CABINS





C BATHROOM



EXTERIOR LIVING

# Your Own Personal Oasis

Guests can expect a totally pampered experience aboard motor yacht C, with 13 crew ready to welcome them aboard.

When it comes to exterior spaces, C has an amazing glass jacuzzi pool on the main deck, two convertible dining tables offering multiple dining arrangements on the upper deck, as well as a circular seating area and second jacuzzi pool on the sundeck.

One of C's standout features is her breezy beach club, open on three sides to allow for maximum airflow and light, it's equipped with chic furnishings for stylish afternoons at the water's edge. The beach club also boasts a well-equipped gym, massage room, and hammam.







C EXTERIOR SPACE









C EXTERIOR SPACE











TENDERS & TOYS

# What's On Board

## Tenders:

- Novamarine BS120 12.5m luxury chase tender
- Survitec 4.50m rescue tender

## Gym equipment:

- Peloton Treadmill
- Peloton Bike
- Technogym Kinesis Gym
- Dumbbell Sets
- Fitness Adjustable Bench
- Wellness Balls
- Exercise Mats





TENDERS & TOYS

# What's On Board

## Toys:

- Sea-Doo GTR-X RS300 (2 person)
- Sea-Doo Wake 170 iDF with sound system (2 person)
- 2x SeaBob F5 SR Cam System with 2 integrated cameras
- 1x Seabob F5
- 2x Lift eFoils
- 4x inflatable stand up paddle boards (two with windsurf set up)
- Tahaa inflatable kayak - 2 person
- Oceandreams floating beach (4x2m)
- Oceandreams anti jellyfish pool (4x2m)
- Selection of wakeboards and skis
- Bestway CoolerZ armchair lounger
- Nautiboy Inflatable swim platform extender





TENDERS & TOYS

# What's On Board

## **Towables:**

- Jobe chaser banana (4 person)
- Jobe Sea-esta sofa (3 person)
- Jobe kickflip (2 person)
- Jobe crusher donut (1 person)

## **Snorkelling Equipment:**

- 6x Adult sets
- 6x Childrens sets









C

# SPECIFICATION

BUILD

**Baglietto**

YEAR

**2021**

LENGTH

**54.2m (177' 10")**

BEAM

**10.4m (34' 1")**

DRAFT

**2.6m (8' 6")**

GUESTS

**12**

CABINS

**7**

CREW

**13**

GROSS TONNAGE

**901**

CRUISING SPEED

**12 Knots**



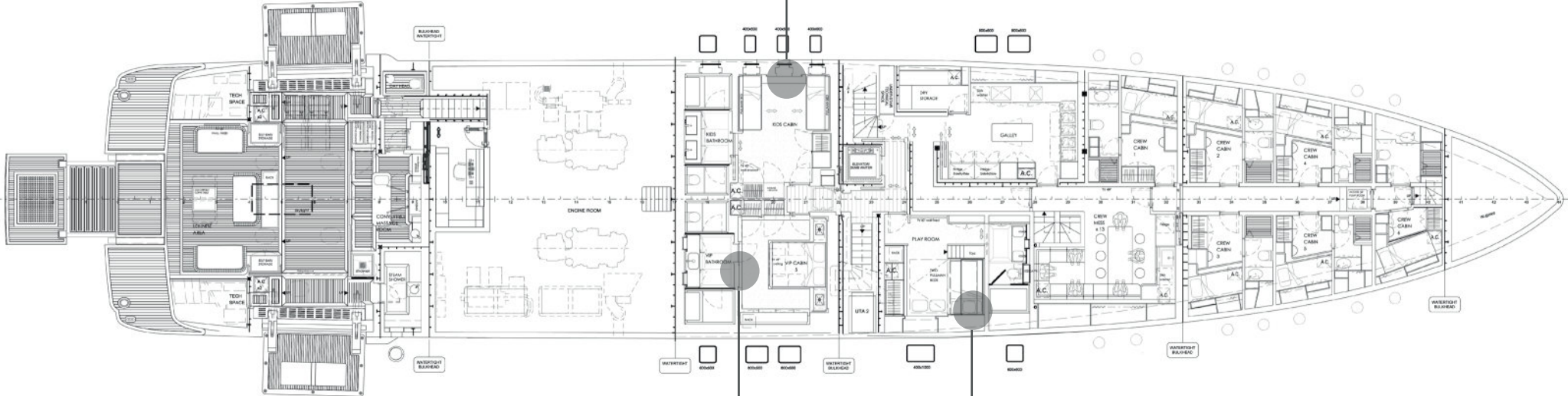
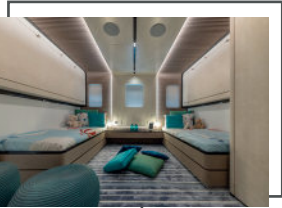




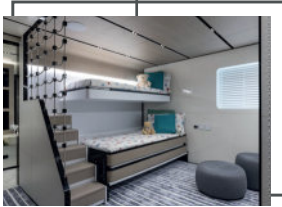


# LOWER DECK

TWIN CABIN



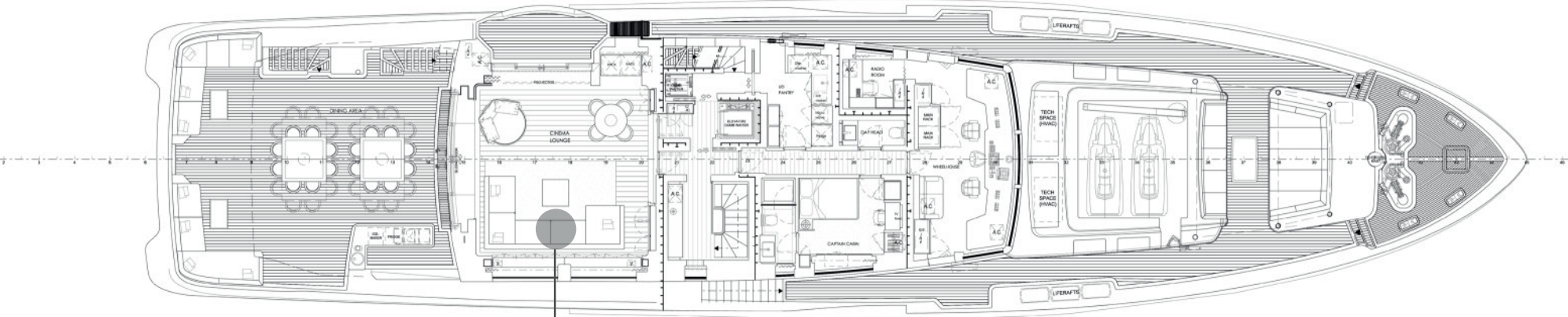
DOUBLE CABIN



CHILDREN'S CABIN



# UPPER DECK

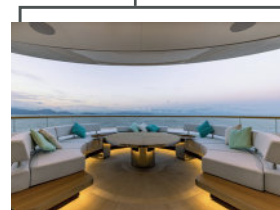
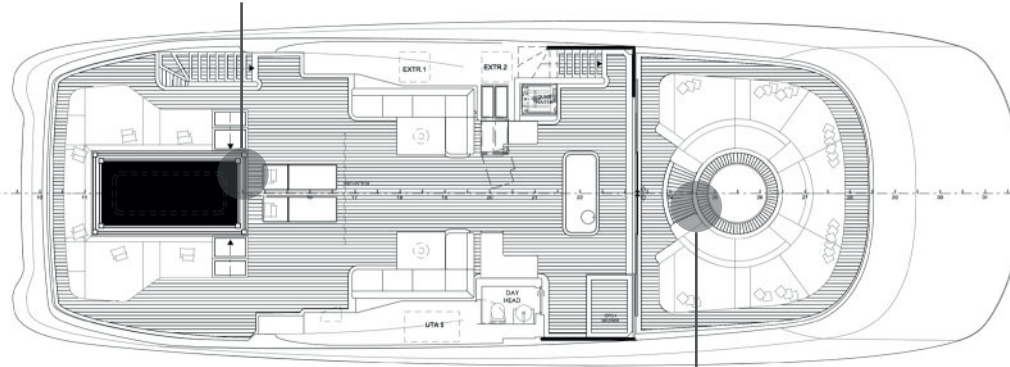


CINEMA LOUNGE



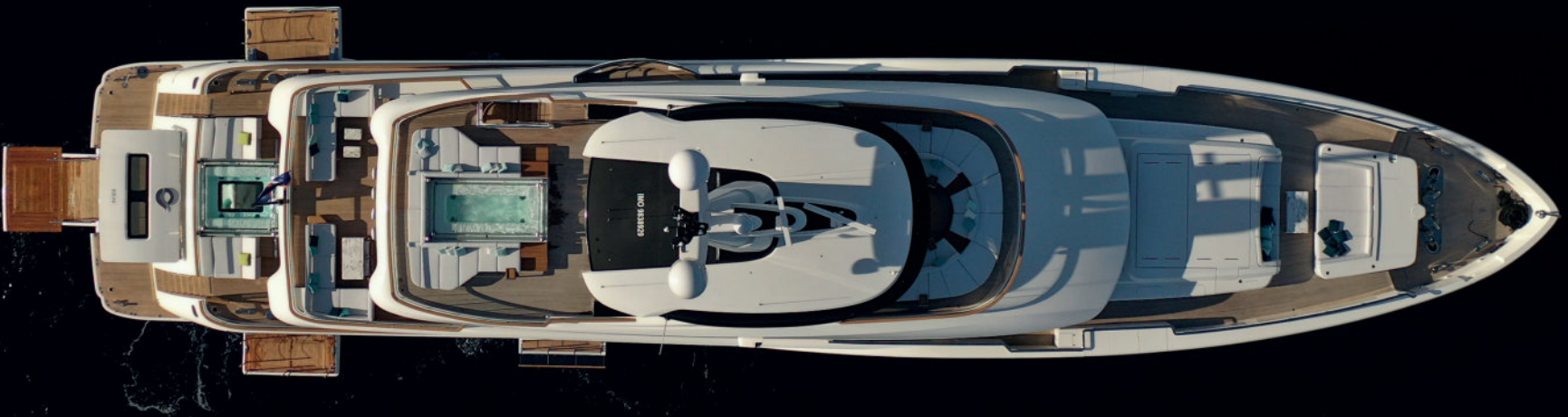
# SUNDECK

POOL - EXTERIOR SPACE



EXTERIOR SPACE









EXCLUSIVELY FOR CHARTER