

CARPE DIEM



WORLDWIDE





CRUISING

CARPE DIEM

SLEEPS 12 IN 6 STATEROOMS

BUILDER: TRINITY YACHTS

INTERIOR DESIGNER: CAROL WILLIAMSON + ASSOCIATES

YEAR: BUILT 2011

LENGTH: 191FT (58.23M)

BEAM: 33FT 4IN (10.18M)

DRAFT: 8FT (2.43M)

HULL CONSTRUCTION: ALUMINUM

HULL CONFIGURATION: SEMI-DISPLACEMENT

ENGINES: 2 X CATERPILLAR 3516B SERIES II / 3,384 HP EACH

SPEED: CRUISE/MAX 17KTS / 21KTS

STABILIZERS: AT ANCHOR (0 SPEED)

FLAG: CAYMAN ISLANDS

CLASSIFICATION: ABS MALTESE CROSS A1 YACHTING SERVICE

COMMERCIAL REGISTRATION / MCA COMPLIANT

MAIN FOYER



THE EPITOME OF COOL, THE SENSATIONAL NEW SIX STATEROOM CARPE DIEM (191FT) HAS ARRIVED ON THE INTERNATIONAL SALES AND CHARTER SCENE. THE SIGNATURE INTERIOR BY CAROL WILLIAMSON + ASSOCIATES SHOWCASES THE OWNER'S PREFERENCE FOR JUXTAPOSING DARK WOODS, LIGHT CARPET AND NEUTRAL FURNISHINGS. VINTAGE FASHION PHOTOGRAPHY, ART DECO ANTIQUES, FURNITURE AND STYLING ARE RECURRING THEMES THROUGHOUT THE INTERIOR.

MAIN SALON



FORWARD ARE TWO FACING SOFAS UPHOLSTERED IN SILK VELVET WITH SATIN ACCENT PILLOWS AND TWO ANTIQUE POLTRONA CHAIRS IN CREAMY COLORED LEATHER. THERE ARE TWO ADDITIONAL ART DECO UPHOLSTERED CHAIRS IN GREY VELVET. THE FLOOR-TO-CEILING ISLAND CREDENZA CONCEALS A POP-UP RUNCO 50 INCH WIDE VISION TV WITH KALEIDESCAPE, SURROUND SOUND AND CRESTRON REMOTE CONTROL.



THE WOOL CARPETING IS BORDERED BY PURE WHITE ONYX. THE ROMAN SHADES AND THE ROOM-DEFINING DRAPERY ON EITHER SIDE OF THE ISLAND CREDENZA, SEPARATING THE MAIN SALON FROM THE DINING SALON, ARE MADE FROM THE SAME SOFTLY STRIPED SHEER FABRIC.

MAIN SALON BAR

ENTERING THE MAIN SALON FROM THE MAIN AFT DECK IS A WET BAR TO PORT WITH A PURE WHITE ONYX TOP, A SUB-ZERO REFRIGERATOR / ICE-MAKER, SINK, EXTRA STORAGE AND FOUR STOOLS WITH CUSTOM UNDERNEATH LIGHTING. THE BAR STOOLS ARE UPHOLSTERED IN METALLIC FINISHED LEATHER.



DINING SALON



FORWARD OF THE ISLAND CREDENZA IS THE MACASSAR EBONY WOOD DINING TABLE WHICH SEATS TWELVE GUESTS. THE DINING OVERHEAD IS PALLADIUM LEAFING AND THE DINING PENDANTS ARE PALLADIUM LEAFED.

MASTER STUDY



ENTER THE FULL WIDTH MASTER SUITE VIA DOUBLE DOORS LEADING INTO THE STUDY FURNISHED WITH A DESK TO STARBOARD WITH LEATHER TRIM AND DRAWERS WITH SILVER PULLS AND PEARL CENTERS. THE STUDY OFFERS THE PASSING VIEW FROM THREE LARGE RECTANGULAR SHAPED PORTHOLES. TO THE SIDE OF THE DESK IS A 26 INCH SAMSUNG TV. TO PORT, IS A SOFA UPHOLSTERED IN SILK CAMELHAIR VELVET AND SILVER-STUDDED TRIM. THE WALL PANELS BEHIND THE SOFA ARE LEATHER-WRAPPED.

MASTER LOUNGE



FORWARD OF THE STUDY IS THE LOUNGE AREA TO STARBOARD SEPARATED FROM THE KING BED BY AN ISLAND CREDENZA. THE SOFA IS UPHOLSTERED IN VELVET WITH AN END TABLE ON EITHER SIDE. TWO FACING ARMCHAIRS AND A METALLIC PEARL COLORED LEATHER OTTOMAN ARE IN FRONT OF THE SOFA. THREE LARGE PORTHOLES ARE BEHIND THE SOFA WITH ELECTRIC BLINDS AND ROMAN SHADES. BESIDE THE CREDENZA IS A LARGE DESK WITH CHAIR. THE CREDENZA CONCEALS A 50 INCH RUNCO POP UP TV WITH SURROUND SOUND, KALEIDESCAPE WITH CRESTRON CONTROL AND AN IPOD DOCKING STATION. THE TV SWIVELS 360 DEGREES.

MASTER SUITE



POSITIONED ATHWARTSHIP TO PORT OPPOSITE THE LOUNGE IS THE KING BED WITH A NIGHT STAND ON EITHER SIDE, EACH WITH A LAMP. THE STRIKING CUSTOM UPHOLSTERED WALLS IN SILVERY SATEEN FABRIC ARE FINISHED IN A DIAMOND TUFTED PATTERN IN THE ART DECO STYLE. THE REMOTE CONTROLLED HEADBOARD REVEALS THREE LARGE PORTHOLES FOR NATURAL LIGHT WITH ELECTRIC BLINDS AND ROMAN SHADES. THE BEDDING IS SILK CHARMEUSE AND THE CARPETING IS A SILK AND WOOL BLEND. HIS AND HERS WALK-IN CLOSETS ARE LOCATED FULL WIDTH ON THE FORWARD BULKHEAD; HERS CONTAINS THE EMERGENCY ESCAPE. A REFRIGERATOR POSITIONED CENTERLINE IN FRONT OF THE CLOSETS IS CLEVERLY CONCEALED IN THE BUILT-IN DRESSER WITH SIX DRAWERS BELOW.

HIS AND HERS MASTER BATH



THE SIZABLE HERS BATHROOM IS LOCATED TO PORT WITH CALCUTTA MARBLE FLOOR, COUNTER TOP, LARGE SHOWER AND OVERSIZE JACUZZI. THE WALLS ARE TILED IN WHITE MOTHER OF PEARL. BUILT-IN CABINETS PROVIDE PLENTY OF STORAGE AND THERE IS A LARGE MIRROR OVER THE SINK. THE BATHROOM HAS THREE LARGE PORTHOLES ABOVE THE JACUZZI WITH ROMAN SHADES. A BIDET IS NEXT TO THE TOILET.



HIS BATHROOM IS LOCATED TO STARBOARD OF THE HERS BATHROOM WITH LIGHT CRYSTAL ONYX FLOORING, COUNTER TOP AND SHOWER WALLS. THE WALLS ARE TILED IN WHITE MOTHER OF PEARL. WITH BUILT-IN CABINETS AND A LARGE MIRROR OVER THE SINK.

VIP KING SUITE



ON THE LOWER DECK AFT IS THE FULL WIDTH VIP KING SUITE WHICH SERVES AS THE SECOND MASTER SUITE. THE HEADBOARD AND BASE OF THE KING BED ARE COVERED IN BLACK FLAX VELVET. ON EITHER SIDE OF THE BED IS AN ONYX-TOPPED NIGHT STAND WITH LAMP AND DRAWERS WITH SILVER PULLS. THERE ARE TWO OVAL PORTHOLES ABOVE THE BED.

THE VIP BATH TO STARBOARD HAS A LIGHT CRYSTAL ONYX FLOOR AND COUNTER TOPS WITH DOUBLE SINK, OVERSIZE SHOWER AND JACUZZI WITH TWO OVAL PORTHOLES ABOVE. TWO ENCLOSED TOILETS (ONE WITH BIDET).



THE FABRICS ARE DONE IN A RICH HONEY COLOR PALETTE WITH ART DECO-INSPIRED PATTERNS ON THE WALLS AND ACCENT PILLOWS. A DESK WITH A LIGHT CRYSTAL ONYX TOP, LEATHER TRIM AND STORAGE DRAWERS WITH STAINLESS STEEL PULLS IS LOCATED ON THE FORWARD BULKHEAD. OPPOSITE THE BED ON THE AFT BULKHEAD IS A DOUBLE CLOSET AND BUILT-IN LOVE SEAT. THE SUITE IS EQUIPPED WITH A 40 INCH SAMSUNG TV, SAT RECEIVER, KALEIDESCAPE, CRESTRON REMOTE CONTROL AND AN IPOD DOCKING STATION AS WELL AS ELECTRIC BLINDS AND ROMAN SHADES.



GUEST ACCOMMODATIONS

EACH STATEROOM IS EQUIPPED WITH A 40 INCH SAMSUNG TV, SAT RECEIVER, KALEIDESCAPE, CRESTRON REMOTE CONTROL AND AN IPOD DOCKING STATION AS WELL AS ELECTRIC BLINDS AND ROMAN SHADES.

GUEST KING STATEROOM STARBOARD

THIS STATEROOM IS FURNISHED WITH A KING BED WITH A BAMBOO VELVET HEADBOARD AND A NIGHT STAND WITH A LAMP ON EITHER SIDE. THERE ARE TWO OVAL PORTHOLES ABOVE THE BED. A DRESSER WITH SILVER PULLS AND A DESK ARE LOCATED ON THE PORTSIDE WALL. A SOFA IS SITUATED ON THE FORWARD WALL NEXT TO THE CLOSET.

THE BATHROOM FEATURES A LIGHT CRYSTAL ONYX FLOOR, COUNTER TOP WITH DOUBLE SINK AND SHOWER.

GUEST KING STATEROOM PORT

THIS STATEROOM IS FURNISHED WITH A KING BED WITH VELVET HEADBOARD AND A NIGHT STAND ON EITHER SIDE WITH A LAMP. THERE ARE TWO OVAL PORTHOLES ABOVE THE BED. ON THE STARBOARD WALL IS A DRESSER WITH SILVER PULLS AND A DESK.

THE BATHROOM FEATURES A DARK BROWN ANTIQUE STONE FLOOR, COUNTER TOP WITH DOUBLE SINK AND SHOWER.

VIP KING SUITE PORT FORWARD

THIS STATEROOM IS CONVERTIBLE AS A THIRD FULL WIDTH MASTER SUITE WHEN USED IN COMBINATION WITH THE TWIN STATEROOM TO STARBOARD NOTED BELOW. THE STATEROOMS HAVE IDENTICAL FABRICS. EMBROIDERED SHEER FABRIC ON THE OVAL PORTHOLES COORDINATES WITH THE ACCENT PILLOW.

THE KING BED IS TO PORT WITH BLACK VELVET HEADBOARD AND A NIGHT STAND WITH A LAMP ON EITHER SIDE. THERE ARE TWO OVAL PORTHOLES ABOVE THE BED. ON THE FORWARD BULKHEAD IS A CLOSET AND A DESK WITH SILVER PULLS AND WHITE ONYX TOP. A SILVER-STUDDED LEATHER UPHOLSTERED CHAIR SITS AT THE DESK.

THE BATHROOM FEATURES AN ITALIAN WHITE ONYX FLOOR, COUNTER TOP WITH DOUBLE SINK AND SHOWER.

TWIN GUEST STATEROOM STARBOARD FORWARD

THIS STATEROOM IS FURNISHED WITH TWIN BEDS IN AN L-SHAPED LAYOUT AS WELL AS ONE PULLMAN BERTH. THERE IS A NIGHT STAND WITH WHITE ONYX TOPS ON EITHER END WITH LAMPS. THE HEADBOARD IS BLACK VELVET. THERE IS CLOSET AT THE ENTRANCE TO THE BATHROOM, WITH A DESK AND CHAIR OPPOSITE.

THE BATHROOM FEATURES A CALACUTTA LUCCICOSO STONE FLOOR, COUNTER TOP AND BATH TUB/SHOWER.



GUEST KING STATEROOM STARBOARD



GUEST KING BATH STARBOARD



GUEST KING STATEROOM PORT



GUEST KING BATH PORT



VIP KING SUITE PORT FORWARD



TWIN GUEST STATEROOM STARBOARD FORWARD

SKYLOUNGE



TO STARBOARD IS A GAME TABLE WITH CHARCOAL GREY EMBOSSED LEATHER TOP THAT SEATS SIX AND AN ADDITIONAL OCCASIONAL TABLE FORWARD THAT SEATS TWO WITH LOUNGE CHAIRS UPHOLSTERED IN SILK VELVET. TWO ANTIQUE VALERIO CHAIRS UPHOLSTERED IN AN ART DECO INSPIRED PATTERN FABRIC FACE A LARGE CUSTOM U-SHAPED SOFA UPHOLSTERED IN TEXTURAL COTTON VELVET. ELECTRIC BLINDS AND ROMAN SHADES ON THE LARGE WINDOWS OFFER PRIVACY. DRAPERIES OF A FINE STRIPED FRINGE SHEER WITH BLACKOUT LINING ENCLOSE THE SLIDING GLASS AFT DOORS.

AFT TO PORT IN THE SKYLounge IS THE WET BAR MADE OF EBONY MACASSAR WITH EBONY CHERRY TRIM. THE FLOOR BEHIND THE BAR IS HONED WHITE ONYX AS IS THE BAR TOP. THE SIX BAR STOOLS ARE FINISHED IN CHARCOAL GREY EMBOSSED LEATHER. THE BAR HOUSES A SUB-ZERO REFRIGERATOR / ICE-MAKER, SINK AND EXTRA STORAGE. A 26 INCH SAMSUNG TV WITH KALEIDESCAPE AND CRESTRON REMOTE CONTROL IS MOUNTED ON THE WALL BEHIND THE BAR.



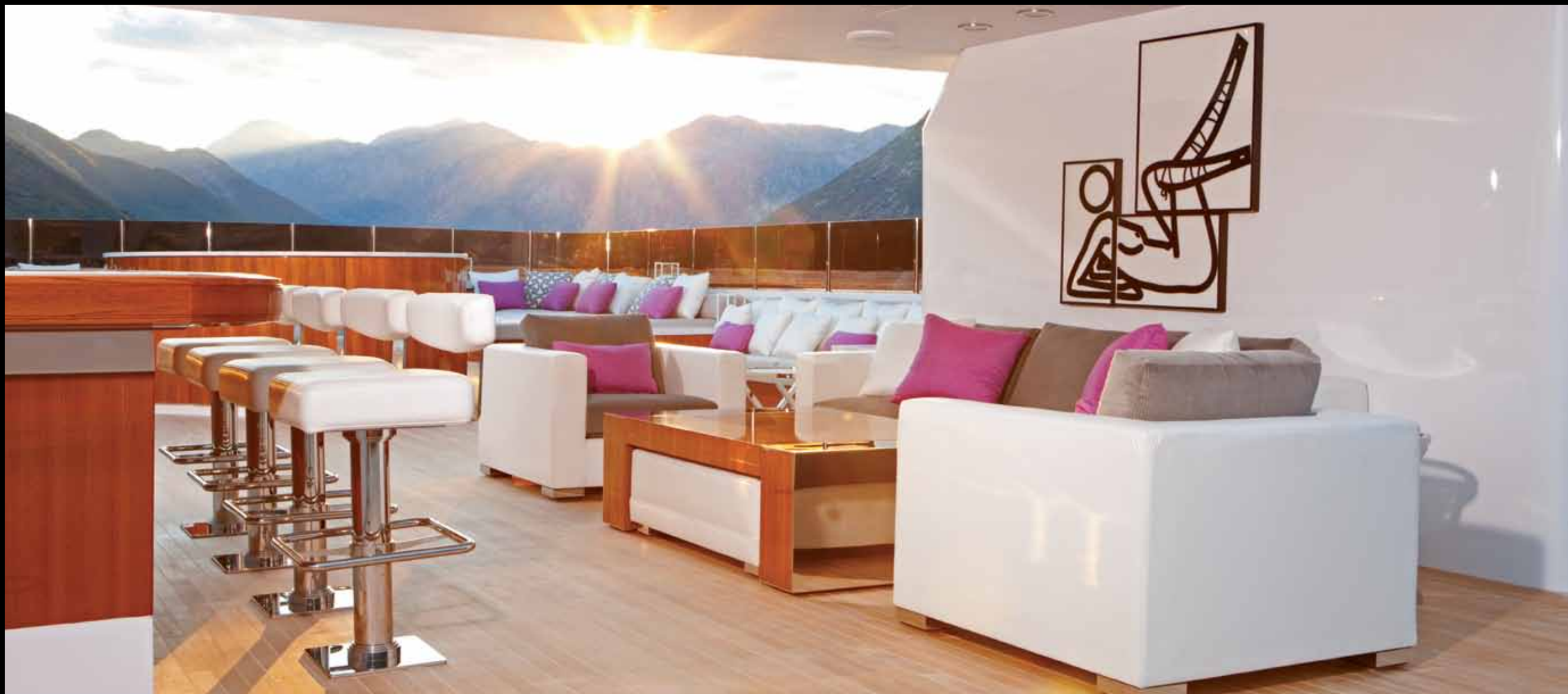
THE FORWARD BULKHEAD HOLDS THE ENTERTAINMENT SYSTEM INCLUDING A 70 SONY INCH BRAVIA XPR TV WITH SURROUND SOUND, KALEIDESCAPE AND CRESTRON REMOTE CONTROL. THE SKYLounge IS EQUIPPED WITH AN IPOD DOCKING STATION.

THE SKYLounge POWDER ROOM IS STARBOARD WITH A WHITE ONYX FLOOR, MARBLE BOWL SINK AND A LARGE MIRROR WITH STAINLESS FRAME. THE POWDER ROOM WALLS ARE WRAPPED IN LEATHER. OPPOSITE IS A WINE CELLAR WHICH HOLDS 220 BOTTLES.

SUNDECK



FORWARD CENTERLINE IS THE LARGE OVAL JACUZZI WITH A MARBLE SURROUND. THE HUGE SUNBED ON THREE SIDES PROVIDES AN EXTENSIVE AREA FOR SUNBATHING AND LOUNGING AND INCLUDES FOUR SMALL REMOVABLE MARBLE DRINK TABLES. THE ENTIRE JACUZZI / SUNBED AREA IS SHIELDED BY A SMOKED PLEXIGLASS WINDSCREEN WHICH ALSO ADDS PRIVACY. THIS AREA CAN BE PROTECTED FROM SUDDEN SHOWERS -OR READIED FOR CRUISING - WITH A CUSTOM REMOVABLE COVER. TWO GENEROUS SOFAS ARE BUILT-IN PORT AND STARBOARD AFT OF THE JACUZZI.



UNDER THE ARCH TO PORT IS A LARGE WET BAR WITH CALACUTTA MARBLE COUNTER TOP AND FOUR BARSTOOLS WITH A SUB-ZERO REFRIGERATOR / ICE-MAKER, SINK AND EXTRA STORAGE. ABOVE THE BAR IS A 46 INCH OUTDOOR SUNBRITE TV WITH KALEIDESCAPE AND CRESTRON REMOTE CONTROL. AFT OF THE BAR IS A LYNX STAINLESS STEEL GAS GRILL. UNDER THE HARDTOP TO STARBOARD IS A CASUAL CONVERSATION AREA WITH FREE-STANDING SOFA, TWO CHAIRS AND OCCASIONAL TABLES. BRIGHTLY COLORED ACCENT PILLOWS ARE IN ABUNDANCE PROVIDING A DAZZLING FLAIR OF COLOR.



STARBOARD AFT OF THE CENTRAL SEATING AREA IS THE AIR-CONDITIONED GENERATOR ROOM AND A POWDER ROOM WHICH HAS AN EXTERIOR SHOWERHEAD ABOVE THE DOOR.



SIX TEAK SUNNING BEDS CAN BE ARRANGED ON THE WIDE AFT DECK AREA WHEN THE TENDERS ARE IN THE WATER. THE CHOCKS ARE REMOVED AND THE DAVIT IS TURNED HORIZONTAL TO THE STERN OUT OF THE WAY TO CLEAR THE ENTIRE AFT DECK.

SKYLounge DECK AFT



THE SKYLounge DECK AFT FEATURES A LARGE RECTANGULAR TABLE MADE OF MACASSAR EBONY WOOD WITH SEATING FOR TWELVE GUESTS AND CALACUTTA MARBLE SERVING COUNTER TOPS PORT AND STARBOARD. ENJOY PRE DINNER COCKTAILS ON THE STERN WITH FULL WIDTH BUILT-IN SEATING WITH OCCASIONAL TABLES. THE CUSTOM STAINLESS STEEL HANDRAILS WITH WOODEN CAPS SURROUNDING THE EXTERIOR OF THE DECK.



THIS DECK HAS A 46 INCH OUTDOOR SUNBRITE TV WITH KALEIDESCAPE AND CRESTRON REMOTE CONTROL. AN IPOD CAN BE PLAYED IN SKYLounge AND PIPED OUT TO THE SKYLounge DECK AFT.



THE SKYLounge DECK Aft CAN BE AIR-CONDITIONED OR HEATED
OVER THE DINING TABLE FOR ADDED COMFORT.



UNIQUE CUSTOM STAINLESS STEEL
RAILINGS WITH WOODEN CAP RAILS
SURROUND THE EXTERIOR DECKS.

MAIN DECK AFT



THE MAIN DECK AFT BOASTS A FULL WIDTH BUILT-IN STERN SETTEE WITH TWO TABLES AND EIGHT CHAIRS FOR CASUAL BREAKFAST OR LUNCH. FORWARD IS A SOFA FACING AFT WITH OCCASIONAL TABLES AND TWO ARM CHAIRS. THIS AREA CAN BE AIR-CONDITIONED OR HEATED.



A WET BAR IS SITUATED PORT FORWARD WITH A WHITE DNYX BAR TOP, SUB-ZERO REFRIGERATOR / ICE-MAKER, SINK AND EXTRA STORAGE. THE FRONT OF THE BAR IS UPHOLSTERED IN OUTDOOR LEATHER IN A TUFTED PATTERN. ABOVE THE BAR IS A 46 INCH OUTDOOR SUNBRITE TV, SAT RECEIVER WITH KALEIDESCOPIC AND CRESTRON REMOTE CONTROL. AN IPOD DOCKING STATION IS ALSO LOCATED HERE. UNIQUE CUSTOM STAINLESS STEEL RAILINGS WITH WOODEN CAP RAILS SURROUND THE EXTERIOR OF THE DECK AS WELL AS THE SPIRAL STAIRCASE TO THE UPPER DECKS.

SWIM PLATFORM



THE SWIM PLATFORM IS ACCESSED BY PORT AND STARBOARD STAIRWAYS AND DOUBLES AS THE "BEACH" / LOUNGE AREA. THE HYDRAULIC PASSERELLE IS ON THE STARBOARD SIDE.



TENDERS AND TOYS ARE STATIONED AT THE READY ON THE STERN.

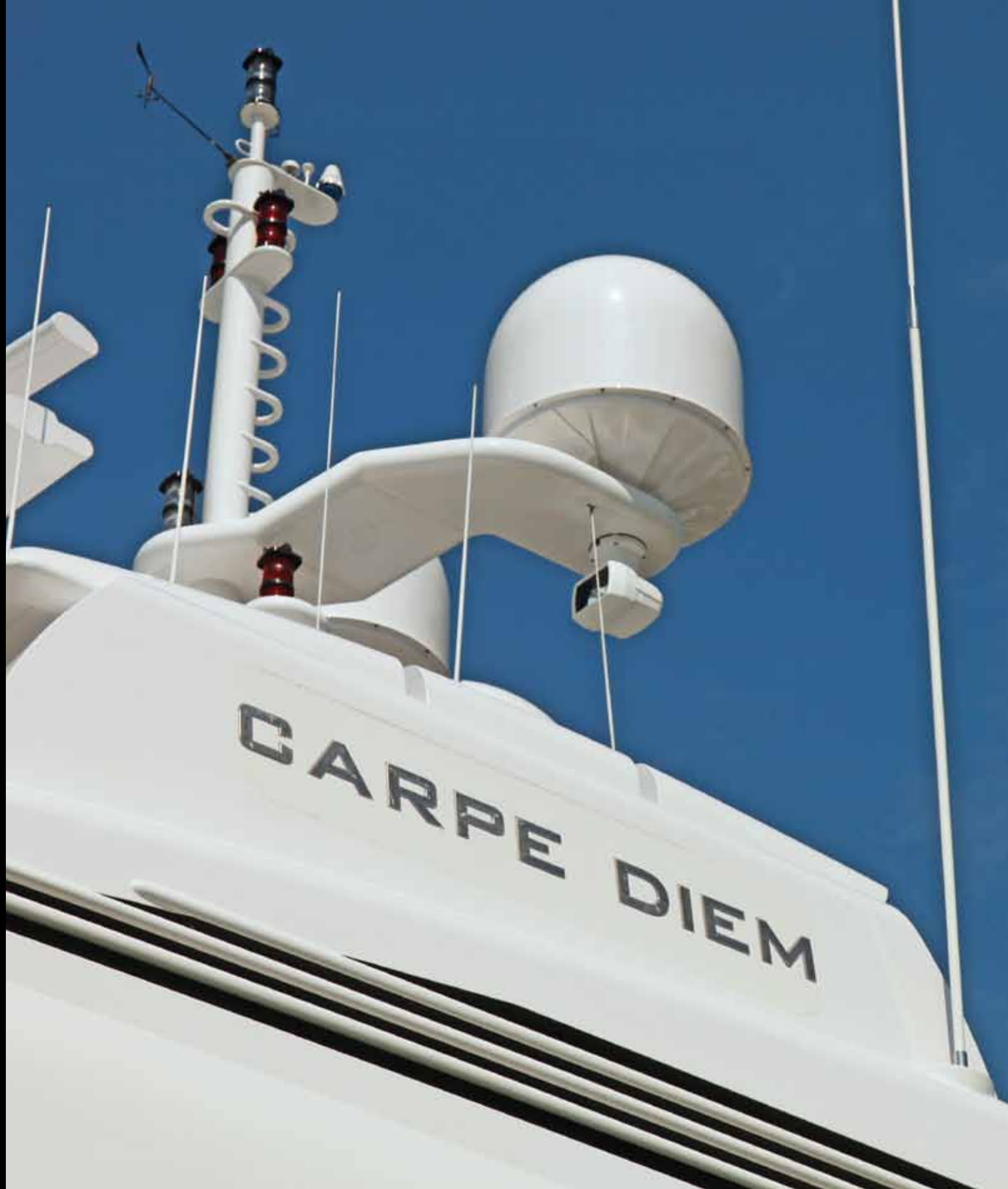












CARPE DIEM

PILOTHOUSE



FORWARD IS A SPLIT GUEST OBSERVATION BANQUETTE WITH SEATING FOR SIX IN CHARCOAL LEATHER. THE THREE HELM CHAIRS ARE ALSO UPHOLSTERED IN CHARCOAL LEATHER AND HAVE STAINLESS STEEL FOOT RESTS. VISIBILITY IS EXCELLENT DUE TO THE LARGE WINDOWS. THE INSTRUMENT CONSOLE WITH STATE-OF-THE-ART ELECTRONICS AND NAVIGATION EQUIPMENT IS FINISHED IN BLACK LEATHER WITH A BLACK GRANITE COUNTER TOP. BLACK LEATHER ALSO COVERS THE CEILING PANELS.

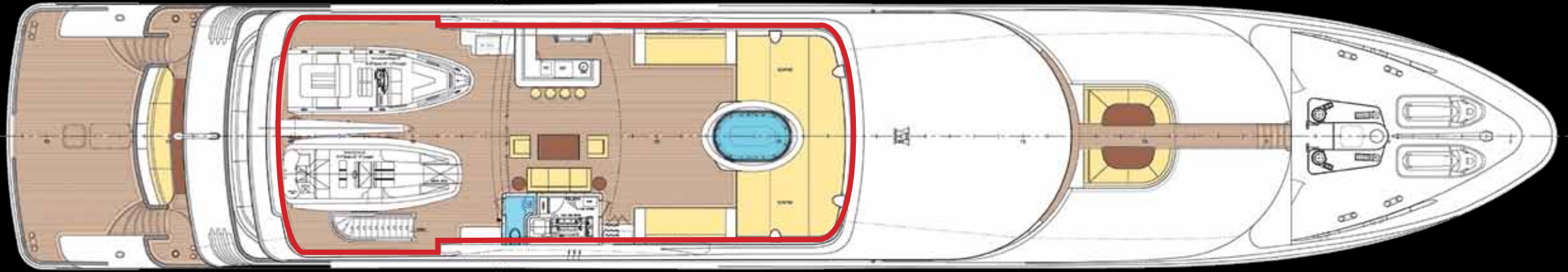
PORTUGUESE BRIDGE



FORWARD OF THE PILOTHOUSE IS THE PORTUGUESE BRIDGE WITH TWO FACING SETTEES EACH WITH A MARBLE TOPPED TABLE.

FOUR SEA-DOO WAVERUNNERS ARE HOUSED ON THE BOW WITH A DAVIT.

● SUNDECK 2400 SQ. FT.



● SKYLOUNGE DECK 720 SQ. FT.

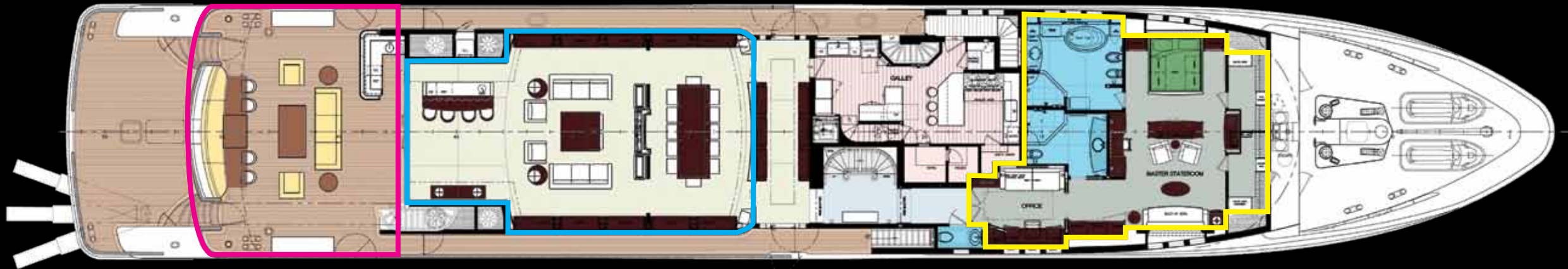
SKYLOUNGE DECK



● SKYLOUNGE 890 SQ. FT.

● MAIN DECK AFT 790 SQ. FT.

MAIN DECK



● MAIN SALON/DINING SALON 1,000 SQ. FT.

● MASTER STATEROOM 920 SQ. FT.

LOWER DECK



● SWIM PLATFORM 390 SQ. FT.

● VIP KING SUITE 420 SQ. FT.

SPECIFICATIONS

MAIN ENGINES

ENGINE TYPE: (2) CATERPILLAR 3516B SERIES II HD 3,384 HP EACH
GEARBOXES FOR MAIN ENGINES: REINJES
DRIVE: PROPELLER

MACHINERY

SPEED CONSUMPTION PER HOUR/RANGE/RPM

MAXIMUM: SPEED	21	CONSUMP/HR	1,374 LPH/363 GPH	RANGE	1,586	RPM	1,800
CRUISING: SPEED	17	CONSUMP/HR	644 LPH/170 GPH	RANGE	2,200	RPM	1,500
ECONOMICAL: SPEED	14	CONSUMP/HR	454 LPH/120 GPH	RANGE	3,142	RPM	1,200
LONG RANGE: SPEED	10	CONSUMP/HR	166 LPH/44 GPH	RANGE	5,000	RPM	900

GENERATORS & ELECTRICITY:

OUTPUT: 480VAC, 3PHASE, 60HZ

GENERATORS: (2) 280KW NORTHERN LIGHTS

EMERGENCY: (1) 99KW NORTHERN LIGHTS NIGHT GENERATOR

LOAD BANK: (1) SEPHCO LSMC2Z-75LS480 (75KW)

GEN. FUEL CONSUMPTION: 15 GALLONS PER HOUR

SHORE POWER: 480 VOLTS / 3PHASE

(1) ATLAS SHORE POWER CONVERTER 200 KVA

AIR-CONDITIONING & HEATING:

MARINE AIR 60 TONS W/ FRESH AIR MAKEUP SYSTEM / AIR HANDLING UNITS: 58

OTHER MACHINERY:

WATERMAKERS: (2) FCI NEPTUNE NWMSD263X 4,000 GPD

WATERMAKER GPD: (2) 5,000 GPD

TRIM TABS/STABILIZERS: QUANTUM QC 1,800 ZERO SPEED

BOW THRUSTER: 200 HP QUANTUM

STEERING SYSTEM: EMI

FUEL SEPARATOR & FILTRATION: ALFA LAVAL

SEWAGE SYSTEM: HEADHUNTER

FRESH WATER SYSTEM: AQUATHIN SOFTENER, SANITRON UV STERILIZERS

BILGE WATER FILTRATION: RECOVERED ENERGY (BOSS 2TY 107)

CAPACITIES

FUEL CAPACITY: 23,190 GAL (87,784 L)

LUBE OIL CAPACITY: 640 GAL (2,423 L)

WASTE OIL CAPACITY: 509 GAL (1,927 L)

SLUDGE OIL CAPACITY: 631 GAL (2,389 L)

FRESH WATER CAPACITY: 3,770 GAL (14,270 L)

GREY WATER CAPACITY: 2,500 GAL (9,464 L)

COMMUNICATION SYSTEMS

SATCOM: F-55 AND VSAT

TELEPHONE SYSTEM: PANASONIC PBAX KX-TDA 200

SSB: FURUNO FS 1,570 VHF

VHF: (6) FURUNO ICOM

CELLULAR PHONE SYSTEM: (2) ERICSSON W25 QUAD BAND GSM W/ M TECH DF-AMP60

INTERCOM: PANASONIC PBX

SHIP'S COMPUTER: DELL

SHIP'S PRINTER: LEXMARK GENESIS

SHIP'S INTERNAL COMMUNICATION SYSTEM: INTEGRATED WITH PHONE SYSTEM

NAVIGATION SYSTEMS

RADAR: FURUNO S BAND AND X BAND

GYROCOMPASS: C-PLATH

MAGNETIC COMPASS: C-PLATH

AUTO PILOT: C-PLATH

DEPTH SOUNDER: B&G

GPS: FURUNO

SHIP'S COMPUTER: DELL

NAVIGATION: TRANSAS

WIND/SPEED LOG: B&G

NAVTEX: FURUNO NX-700

DECK EQUIPMENT

ANCHOR WINDLASS: (2) MUIR MVRC (1) 5,000 HYDRAULIC WITH CHAIN COMPRESSOR

AFT WARPING CAPSTANS: (2) MUIR HYDRAULIC

ANCHORS: (2) BALANCED POOLE

TENDER CRANE AND DAVITS:

(1) NAUTICAL STRUCTURES 6,000 LBS. SOLAS & (1) NAUTICAL STRUCTURES 1,700 LBS.

PASSERELLE: NAUTICAL STRUCTURES 25' HYDRAULIC

SWIM PLATFORM:

(1) FRESHWATER HOT/COLD SHOWER

(2) 30 AMP SHORE POWER FOR A TENDER

(1) 50 AMP SHORE POWER FOR A TENDER

DIESEL FUELING STATION BUILT INTO STERN

TEAK AND STAINLESS STEEL SURROUNDS SWIM PLATFORM

GALLEY & LAUNDRY EQUIPMENT

MAIN GALLEY EQUIPMENT:

- (2) MIELE OVENS
- (2) MIELE COOKTOPS
- (1) VULCAN SALAMANDER AND HOOD
 - (1) KITCHEN AID MICROWAVE
 - (1) DELFIELD REFRIGERATOR
 - (1) COSPOLICH WALK-IN FREEZER
 - (1) SUB-ZERO ICEMAKER
 - (2) MIELE DISHWASHERS
- (1) KITCHEN AID TRASH COMPACTOR

CREW GALLEY/MESS EQUIPMENT:

- (1) WHIRLPOOL MICROWAVE OVEN
- (1) FULL HEIGHT SUB-ZERO REFRIGERATOR
- (1) DISHWASHER

REFRIGERATION/FREEZER: DELFIELD / COSPELICH
DUMBWAITER TO UPPER CREW SERVICE AREA

LAUNDRY EQUIPMENT:

- GUEST: (3) MIELE STACKED WASHER/DRYERS
- CREW: (1) MIELE STACKED WASHER/DRYERS

SECURITY, FIRE FIGHTING & SAFETY EQUIPMENT

SECURITY EQUIPMENT:

CCTV SYSTEM: VEI PC BASE COLOR SYSTEM WITH 8 CAMERAS
CAMERAS: PELCO
MONITORS: VEI

FIRE FIGHTING EQUIPMENT:

FIRE CONTROL SYSTEM: SALWICO
FIRE EXTINGUISHERS: KIDDE
ALARMS: SALWICO

SAFETY EQUIPMENT:

LIFE RAFTS: (6) USCG 12 XTREM NG SOLAS 94/96
LIFE RINGS: (8) LIFE RINGS
EPIRBs: MCMURDO G5 SMARTFIND PLUS
FLARES: ORION
MEDICAL EQUIPMENT: OMI

TENDER & TOYS

TENDERS: 23' (7M) NOVURANIA CHASE 220HP YANMAR DIESEL,
22' (6.7M) NAUTICA LANDING CRAFT 197HP YANMAR DIESEL
13' (3.9M) INFLATABLE RESCUE TENDER
(4) SEADOO GTX LIMITED EDITION WAVERUNNERS
TRAMPOLINE, WATER SKIS, WAKEBOARD, SNORKEL GEAR
DIVE GEAR: (6) SETS (1) CLARK YACHT DIVE COMPRESSOR

EXERCISE EQUIPMENT

SPIN BIKE, PULL-UP MACHINE, WEIGHT BENCH, FREE-WEIGHTS

AUDIO VISUAL

CRESTRON SYSTEM WITH TOUCHPAD REMOTE CONTROL THROUGHOUT
KALEIDESCAPE CENTRAL MOVIE/MUSIC SERVER
SATELLITE TV
SURROUND SOUND
IPOD CONNECTIONS

EXCLUSIONS

OWNER'S PERSONAL EFFECTS AND ART WORK. A COMPLETE INVENTORY OF EXCLUSIONS TO BE PROVIDED AT TIME OF FULLY EXECUTED PURCHASE AGREEMENT.

DISCLAIMER

SPECIFICATIONS ARE PROVIDED FOR INFORMATIONAL PURPOSES ONLY. DATA WAS OBTAINED FROM SOURCES BELIEVED RELIABLE BUT IS NOT GUARANTEED BY OWNER OR BROKERS.

PHOTOGRAPHY

JIM RAYCROFT & KRISTINA STROBEL

DESIGN AND PRODUCTION

IYC. FORT LAUDERDALE, FL 0811

An aerial photograph of a white yacht with a dark hull, moving across a deep blue sea. The yacht is leaving a white wake that forms a large, stylized letter 'S'. In the background, a coastal town with buildings and greenery is visible on a hillside overlooking the water.

"THE INTERIOR OF CARPE DIEM REPRESENTS A TRUE LOVE AFFAIR BETWEEN TWO DESIGN GENRES...THE REFINEMENT OF MODERNISM ACCENTUATED BY THE SUBTLE, ELEGANT REFERENCES TO EUROPEAN ART DECO DETAILING."

CAROL WILLIAMSON
CAROL WILLIAMSON + ASSOCIATES

