

25,55m – 83'10" | PERSHING | 2023 | 9 GUESTS/ 4 CABINS | 3 CREW

HIGH SEASON RATE: €75,000 / week + expenses

LOW SEASON RATE: €65,000 /week + expenses

2024: NEW TO THE CHARTER MARKET



Welcome onboard motor yacht CHERRY, a remarkable 25.55m - 83'10" Pershing 8X that embodies luxury and high performance. This 2023 vessel boasts sleek and clean lines that gracefully traverse across all decks. With its lightweight design and impressive speed, this high-performing marvel promises an exciting journey on the open waters.



KEY FEATURES

- **BELOW 24M WATERLINE**
For anchorage flexibility
- **NEW YACHT**
Delivered May 2023
- **GYRO STABILISERS**
For comfort at anchor and underway
- **IDEALLY LOCATED**
in Cap d'Ail (South France)
- **IMPRESSIVE SPEEDS**
Up to 48knots

Hull Construction:

Carbon Fibre for enhanced performance and efficiency

Accommodation:

9 Guests in 4 Cabins

Bed configuration:

1 Grand King, 1 Double, 4 Single, 1 Pullman



PHOTOS PROVIDED ARE OF CHERRY'S SISTER SHIP.

THE FAMILY VACATIONERS WILL FIND THE IDEAL RETREAT ONBOARD CHERRY, COMFORTABLY HOSTING UP TO 9 GUESTS ACROSS 4 CABINS. THERE ARE 4 SINGLE BEDS AND A PULLMAN IN 2 TWIN CABINS, A DOUBLE BED IN THE VIP CABIN, AND A GRAND KING BED IN THE FULL BEAM MASTER CABIN. ADDING TO THE FAMILY APPEAL, THE YACHT FEATURES A BARBECUE FOR ONBOARD GRILLING AND FUN-FILLED WATER TOYS THAT CATER TO ALL AGES, ENSURING A MEMORABLE FAMILY ADVENTURE.





THE RELAXATION SEEKERS CAN LOUNGE ON SUNBEDS FOR MESMERIZING SEA VIEWS ON THE SPORTS FLY OR FIND SERENITY ON THE FOREDECK SUNPADS. THE ADAPTABLE AFT DECK SERVES AS AN ALFRESCO DINING SPACE OR A SECONDARY LOUNGING AREA WITH A LOWERING TABLE. STATE-OF-THE-ART STABILISERS GUARANTEE A COMFORTABLE VOYAGE UNDERWAY AND AT ANCHOR, ENHANCING THE EXPERIENCE.



THE SOCIAL BUTTERFLIES CAN FEAST IN A WORLD OF AUDIO-VISUAL DELIGHTS ONBOARD. OLED-TVS GRACE THE SALON AND MASTER CABIN, ENSURING YOU'RE NEVER FAR FROM ENTERTAINMENT. PREMIUM SOUND UPGRADES ALLOW GUESTS TO ENJOY THEIR FAVOURITE TUNES THROUGHOUT THE YACHT. YOUR VOYAGE, YOUR SOUNDTRACK.



THE ROMANTIC CRUISERS CAN INDULGE IN LUXURY AND PRIVACY WITHIN THE MASTER CABIN, WHERE THE AMBIANCE IS ELEVATED BY THE USE OF FRAU LEATHER, IMPARTING A DISTINCTIVE TOUCH OF ITALIAN DESIGN. THE SEA IS BEAUTIFULLY ILLUMINATED BY UNDERWATER LIGHTS AND COUPLES CAN RELISH A CANDLELIT DINNER BENEATH THE STARS, ALSO VISIBLE FROM WITHIN THANKS TO THE MOONROOF.





THE CORPORATE MARINERS CAN ANCHOR THEIR AMBITIONS WITH CHERRY, BENEFITING FROM TOP-TIER SERVICE PROVIDED BY PROFESSIONAL CREW MEMBERS. CHERRY OFFERS A PRIVATE SETTING FOR IMPACTFUL MEETINGS, OPPORTUNITIES, AND ELEVATED NETWORKING. FOR STATIC CHARTERS, CHERRY PROVIDES A UNIQUE, COST-EFFECTIVE SPACE IN PRIME MARINA LOCATIONS, BLENDING LAND VENUE STABILITY WITH YACHT LUXURY. MULTIPLE DINING OPTIONS ENABLE CONCURRENT MEETINGS ONBOARD.



THE ADVENTUROUS EXPLORERS, CAN INDULGE IN THE DISCREETLY STORED, HIGH-END WATER TOY COLLECTION, PROMISING MEMORABLE ADVENTURES ON THE WATER FOR AN UNFORGETTABLE CHARTER EXPERIENCE. CHERRY IS YOUR TICKET TO HIGH-SPEED THRILLS ON THE OPEN SEAS. THIS REMARKABLE CHARTER YACHT HITS AN IMPRESSIVE CRUISING SPEED OF 41 KNOTS, MAXING OUT AT AN EXHILARATING 48 KNOTS.



WATER TOYS

Sea Bob F5S Pershing edition,
Sea Doo Spark Trixx,
Tender Williams 345 Sportjet,
Fliteboard E-Foil,
Jobe Double Trouble Towable,
9 Cressi Snorkel Sets,
2x Jobe Mini Manta Floating
Mats,
Foam Pool Noodles,
Basic Fishing Gear.

To ensure a safe and enjoyable charter, the Sea Doo Spark is only offered to Guests holding the appropriate license,



TECHNICAL SPECS:

ENGINES:

2 x Diesel engine MTU 16V
2638 HP

GENERATORS:

2x 22 KW

AIRCONDITIONING:

Mediterranean (90.000BTU)

CRUISING / MAX SPEED:

41 / 48 KTS

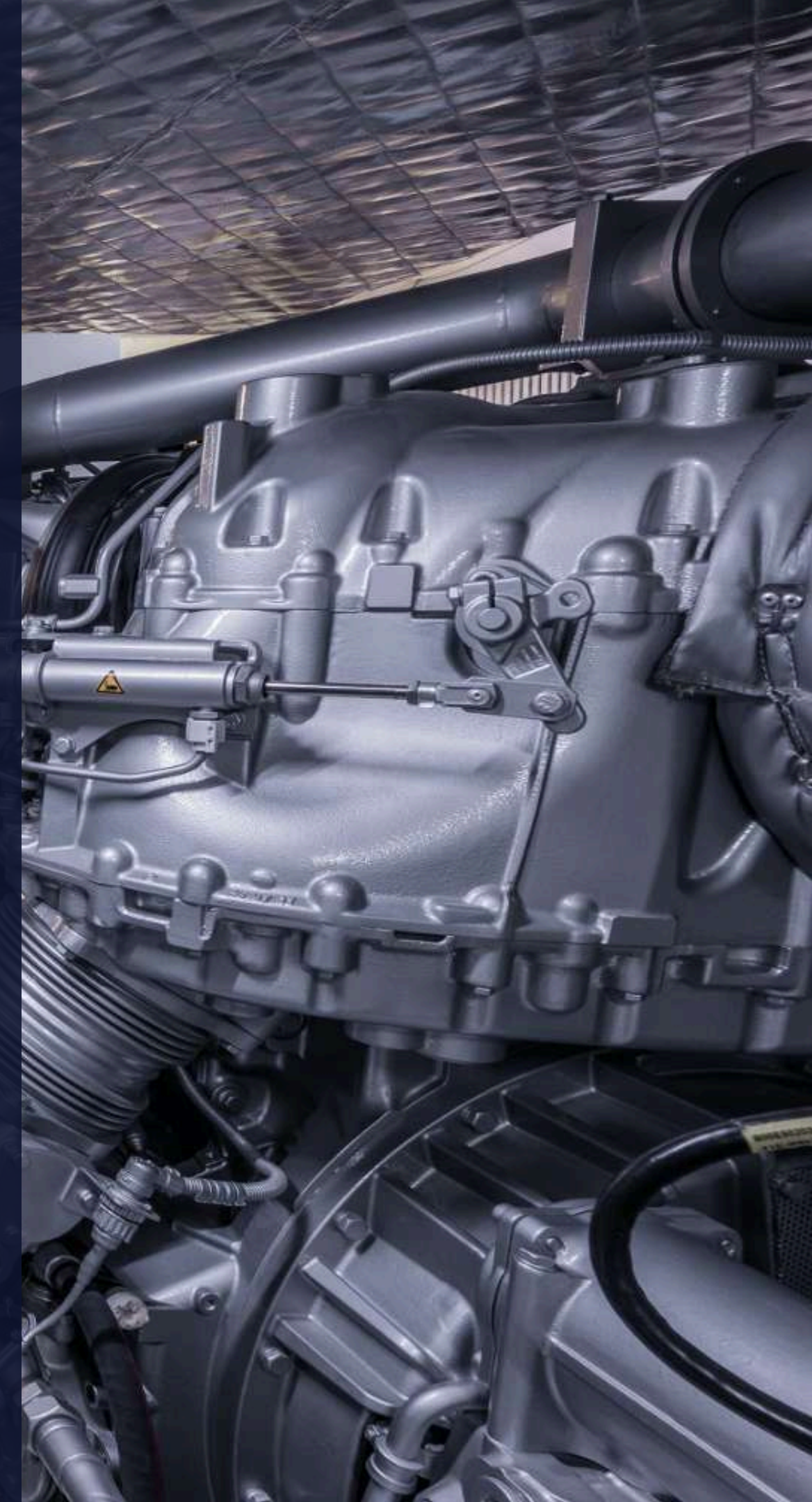
RANGE:

310 NM*

CONSUMPTION:

20litres / nautical mile*

**at cruising speed*

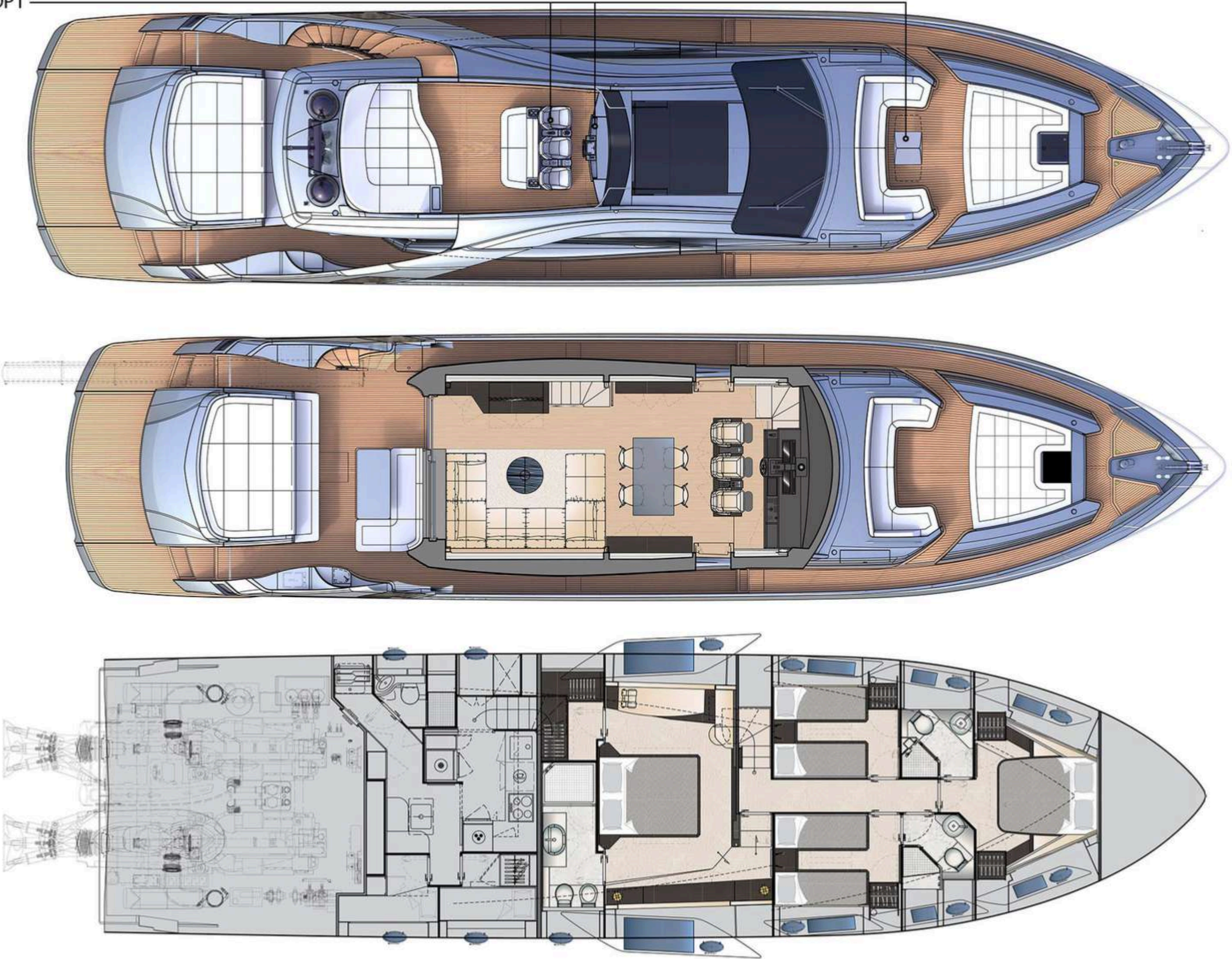


GENERAL ARRANGEMENT PLAN



C H E R R Y

OPT





All particulars and specifications relating to this yacht are given in good faith and are believed to be correct but cannot be guaranteed.