

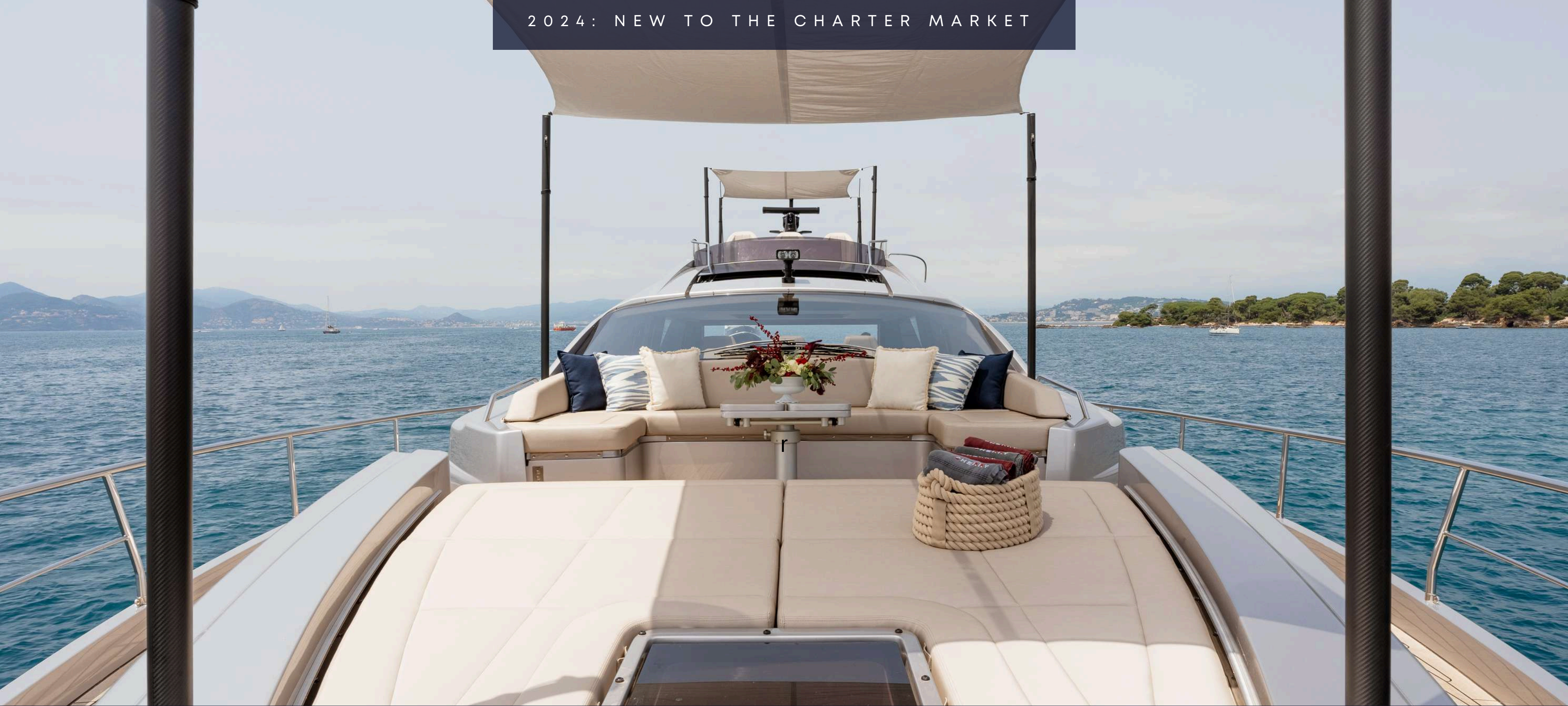
CHEERY



25,55m – 83'10" | PERSHING 8x | 2023 | 9 GUESTS | 4 CABINS | 3 CREW



2024: NEW TO THE CHARTER MARKET



Welcome onboard motor yacht CHERRY, a remarkable 25.55m - 83'10" Pershing 8X that embodies luxury and high performance. This 2023 vessel boasts sleek and clean lines that gracefully traverse across all decks. With its lightweight design and impressive speed, this high-performing marvel promises an exciting journey on the open waters.



WHY CHERRY?

Key Features

HOME BERTH INCLUDED IN RATE | IDEALLY LOCATED IN CAP D'AIL, SOUTH FRANCE (ADJACENT TO MONACO)

NEW YACHT | DELIVERED MAY 2023

HIGH QUALITY FINISHES | APPEALING TO DIVERSE TASTES, ENHANCED COMFORT, AND TIMELESS ELEGANCE

GYRO STABILISERS | FOR COMFORT AT ANCHOR AND UNDERWAY

IMPRESSIVE SPEEDS | 42 KNOTS CRUISING | 48 KNOTS MAX

FANTASTIC CREW | EXPERIENCE INCLUDES SENIOR POSITIONS ON 40-60M YACHTS AND CHALET IN THE FRENCH ALPS.

IMPRESSIVE LIST OF WATER TOYS | CATERING TO DIVERSE INTERESTS, AND ENSURING ENJOYMENT FOR GUESTS OF ALL AGES.







ACCOMMODATION

Arrangements

MASTER CABIN | GRAND KING BED | ENSUITE BATHROOM WITH SHOWER & BIDET | WALK IN WARDROBE | COFFEE/WORK DESK ALCOVE

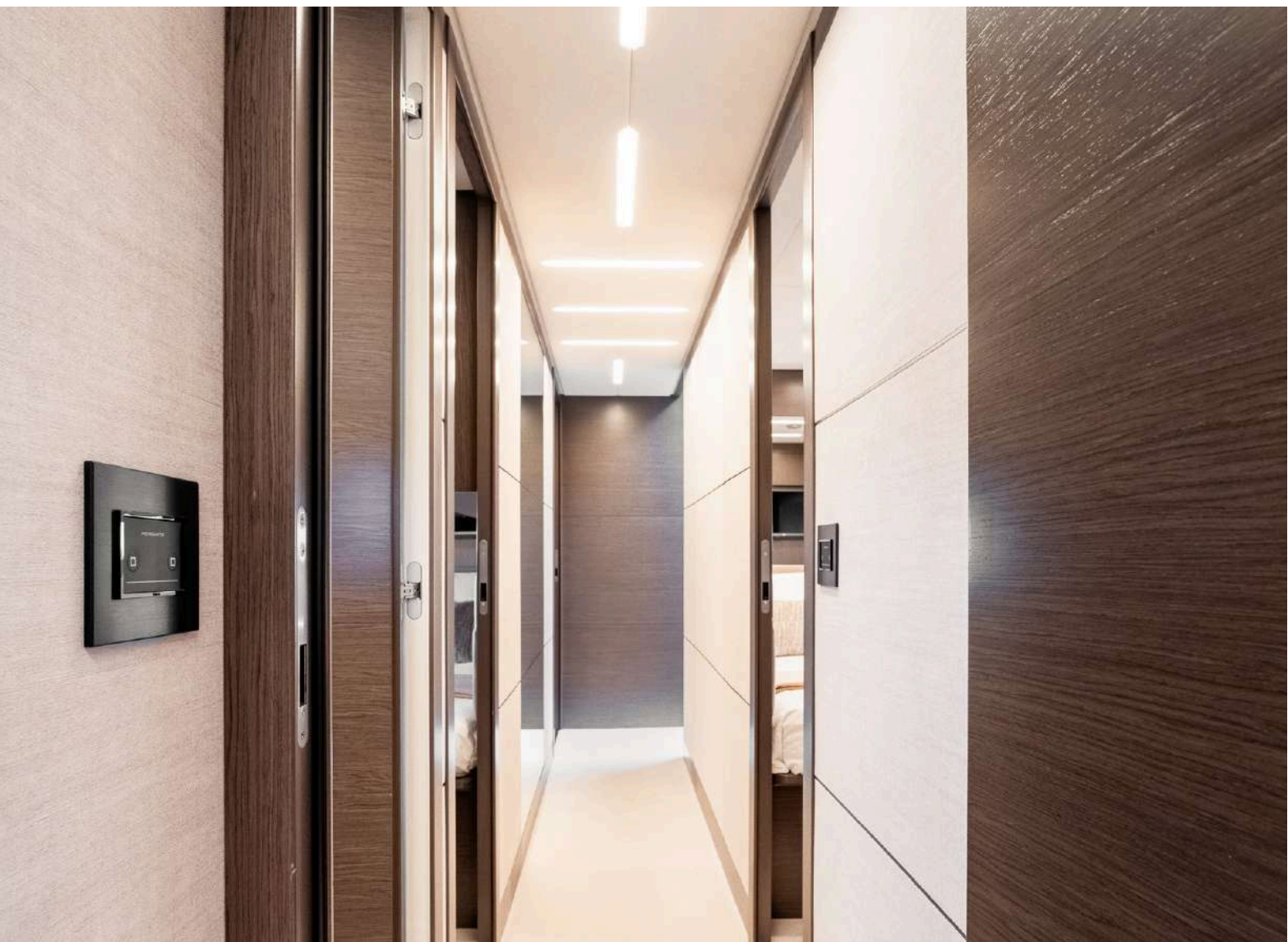
VIP CABIN | DOUBLE BED | ENSUITE BATHROOM WITH SHOWER | WARDROBE

STARBOARD TWIN CABIN | 2 SINGLE BEDS + PULLMAN FOR CHILD | WARDROBE | JACK & JILL BATHROOM SHARED WITH PORT TWIN

PORT TWIN CABIN | 2 SINGLE BEDS | WARDROBE | JACK & JILL BATHROOM SHARED WITH STARBOARD TWIN

All cabins have tv's, high quality linens and eco friendly toiletries.







THE FAMILY VACATIONERS WILL FIND THE IDEAL RETREAT ONBOARD CHERRY, COMFORTABLY HOSTING UP TO 9 GUESTS ACROSS 4 CABINS. THERE IS A GRAND KING BED IN THE FULL BEAM MASTER CABIN, A DOUBLE BED IN THE VIP CABIN AND 4 SINGLE BEDS IN THE TWIN CABINS +1 PULLMAN. ADDING TO THE APPEAL, THE YACHT FEATURES A BARBECUE FOR ONBOARD GRILLING AND FUN-FILLED WATER TOYS THAT CATER TO ALL AGES, ENSURING A MEMORABLE FAMILY ADVENTURE.



THE RELAXATION SEEKERS CAN LOUNGE ON SUNBEDS FOR MESMERIZING SEA VIEWS ON THE SPORTS FLY OR FIND SERENITY ON THE FOREDECK SUNPADS. THE ADAPTABLE AFT DECK SERVES AS AN ALFRESCO DINING SPACE OR A SECONDARY LOUNGING AREA WITH A LOWERING TABLE. STATE-OF-THE-ART STABILISERS GUARANTEE A COMFORTABLE VOYAGE UNDERWAY AND AT ANCHOR, ENHANCING THE EXPERIENCE.





THE SOCIAL BUTTERFLIES CAN ENJOY A RICH ARRAY OF WORLD OF AUDIO-VISUAL DELIGHTS ONBOARD. OLED-TVS GRACE THE SALON AND MASTER CABIN, ENSURING YOU'RE NEVER FAR FROM ENTERTAINMENT. PREMIUM SOUND UPGRADES ALLOW GUESTS TO ENJOY THEIR FAVOURITE TUNES THROUGHOUT THE YACHT. YOUR VOYAGE, YOUR SOUNDTRACK.



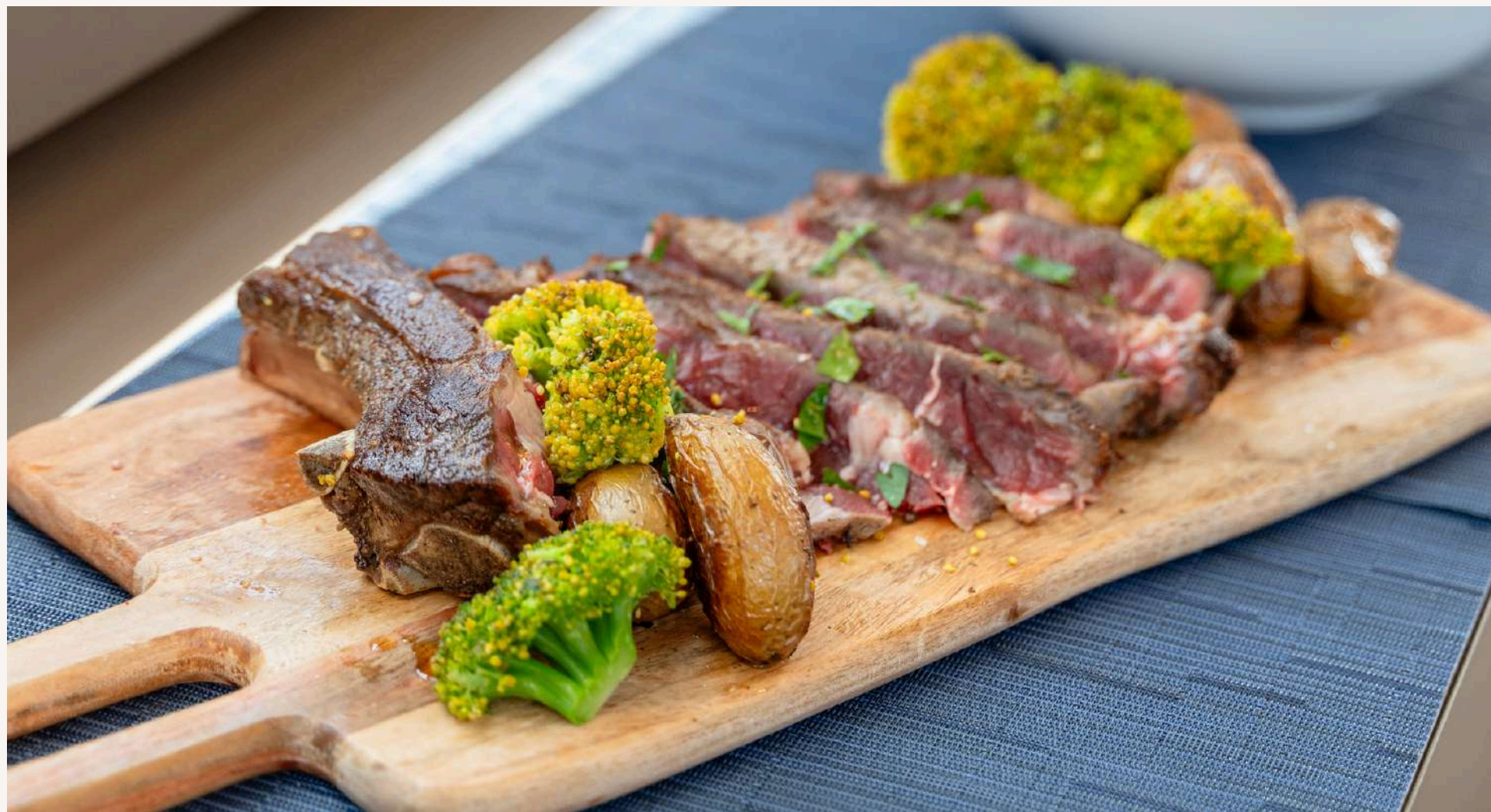
THE ROMANTIC CRUISERS CAN INDULGE IN LUXURY AND PRIVACY WITHIN THE MASTER CABIN, WHERE THE AMBIANCE IS ELEVATED BY THE USE OF FRAU LEATHER, IMPARTING A DISTINCTIVE TOUCH OF ITALIAN DESIGN. THE SEA IS BEAUTIFULLY ILLUMINATED BY UNDERWATER LIGHTS AND COUPLES CAN RELISH A CANDLELIT DINNER BENEATH THE STARS, ALSO VISIBLE FROM WITHIN, THANKS TO THE MOONROOF.





THE CORPORATE MARINERS CAN ANCHOR THEIR AMBITIONS WITH CHERRY, BENEFITING FROM TOP-TIER SERVICE PROVIDED BY PROFESSIONAL CREW. CHERRY OFFERS A PRIVATE SETTING FOR IMPACTFUL MEETINGS, OPPORTUNITIES, AND ELEVATED NETWORKING. FOR STATIC CHARTERS, CHERRY PROVIDES A UNIQUE, COST-EFFECTIVE SPACE IN PRIME MARINA LOCATIONS, BLENDING LAND VENUE STABILITY WITH YACHT LUXURY. MULTIPLE DINING OPTIONS ENABLE CONCURRENT MEETINGS ONBOARD.





THE ADVENTUROUS EXPLORERS, CAN INDULGE IN THE DISCREETLY STORED, HIGH-END WATER TOY COLLECTION, PROMISING MEMORABLE ADVENTURES ON THE WATER FOR AN UNFORGETTABLE CHARTER EXPERIENCE. CHERRY IS YOUR TICKET TO HIGH-SPEED THRILLS ON THE OPEN SEAS. THIS REMARKABLE CHARTER YACHT HITS AN IMPRESSIVE CRUISING SPEED OF 42 KNOTS, MAXING OUT AT AN EXHILARATING 48 KNOTS.



WATER TOYS

Sea Bob F5S Pershing edition,
Sea Doo Spark Trixx,
Tender Williams 345 Sportjet,
Fliteboard E-Foil,
Jobe Double Trouble Towable,
9 Cressi Snorkel Sets,
2x Jobe Mini Manta Floating
Mats,
Foam Pool Noodles,
Basic Fishing Gear.

To ensure a safe and enjoyable charter, the Sea Doo Spark is only offered to Guests holding the appropriate license,







TECHNICAL SPECS:

ENGINES:

2 x Diesel engine MTU 16V
2638 HP

GENERATORS:

2x 22 KW

AIRCONDITIONING:

Mediterranean (90.000BTU)

CRUISING / MAX SPEED:

42 / 48 KTS

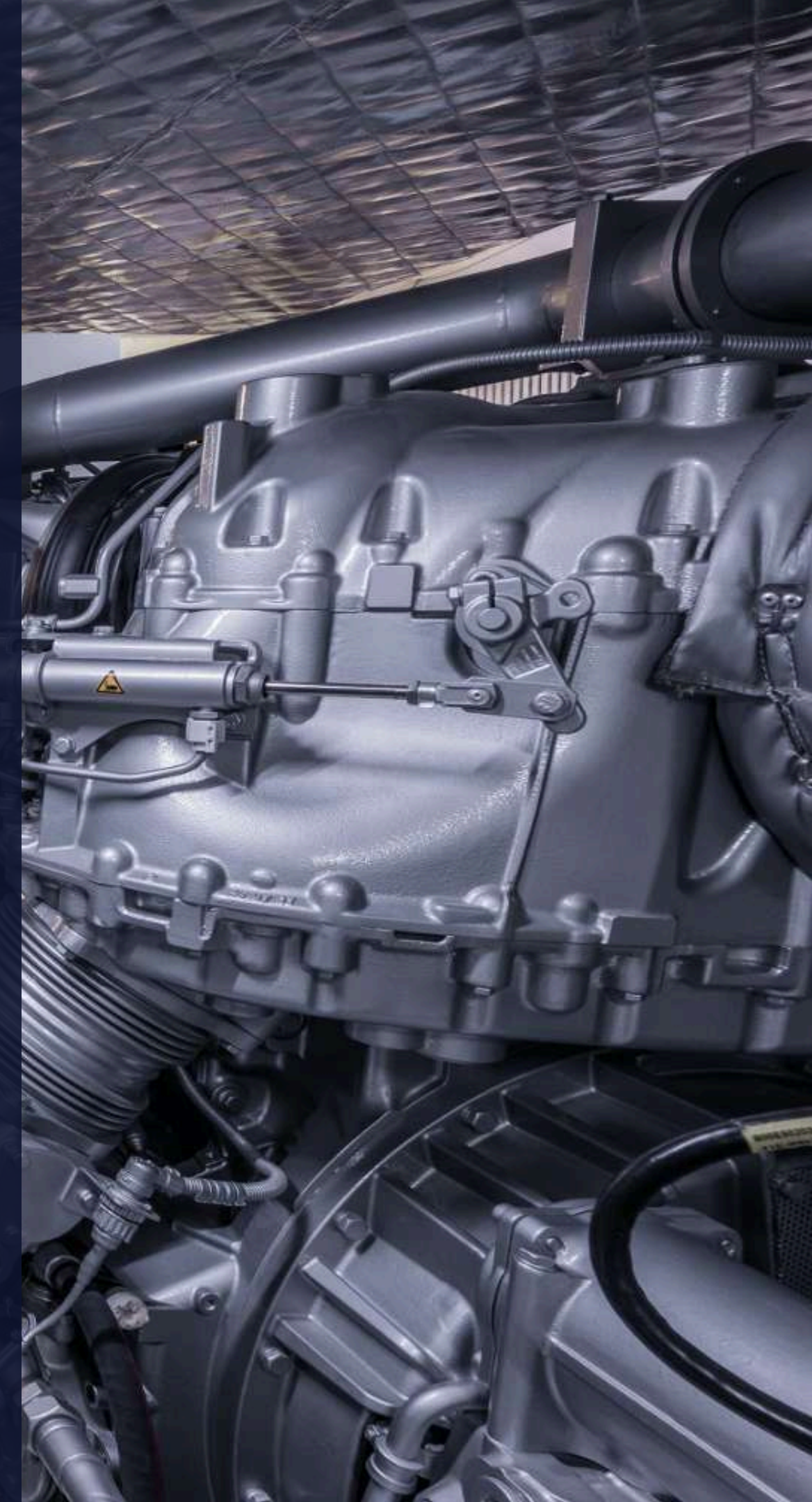
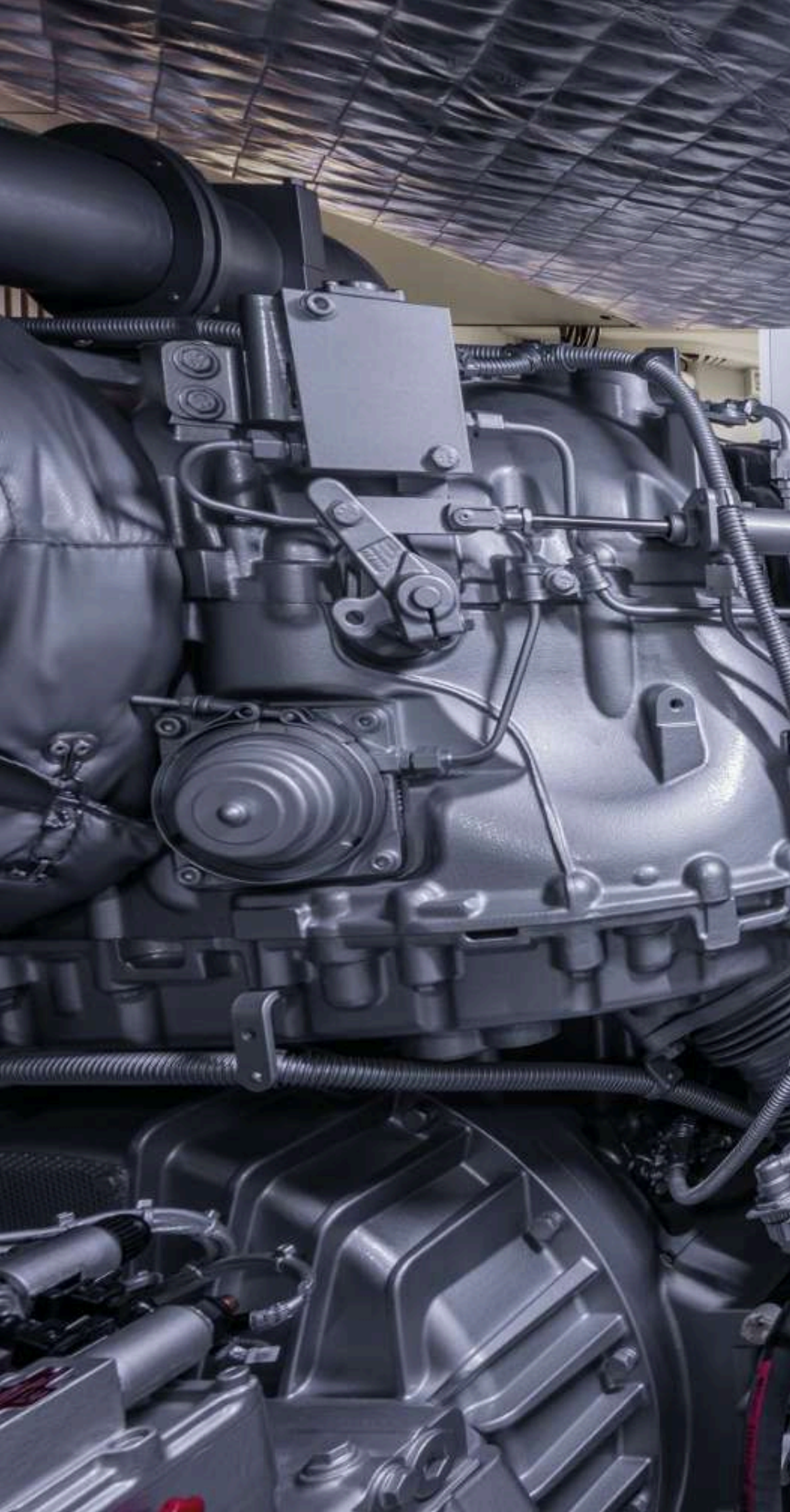
RANGE:

310 NM*

CONSUMPTION:

20litres / nautical mile*

**at cruising speed*

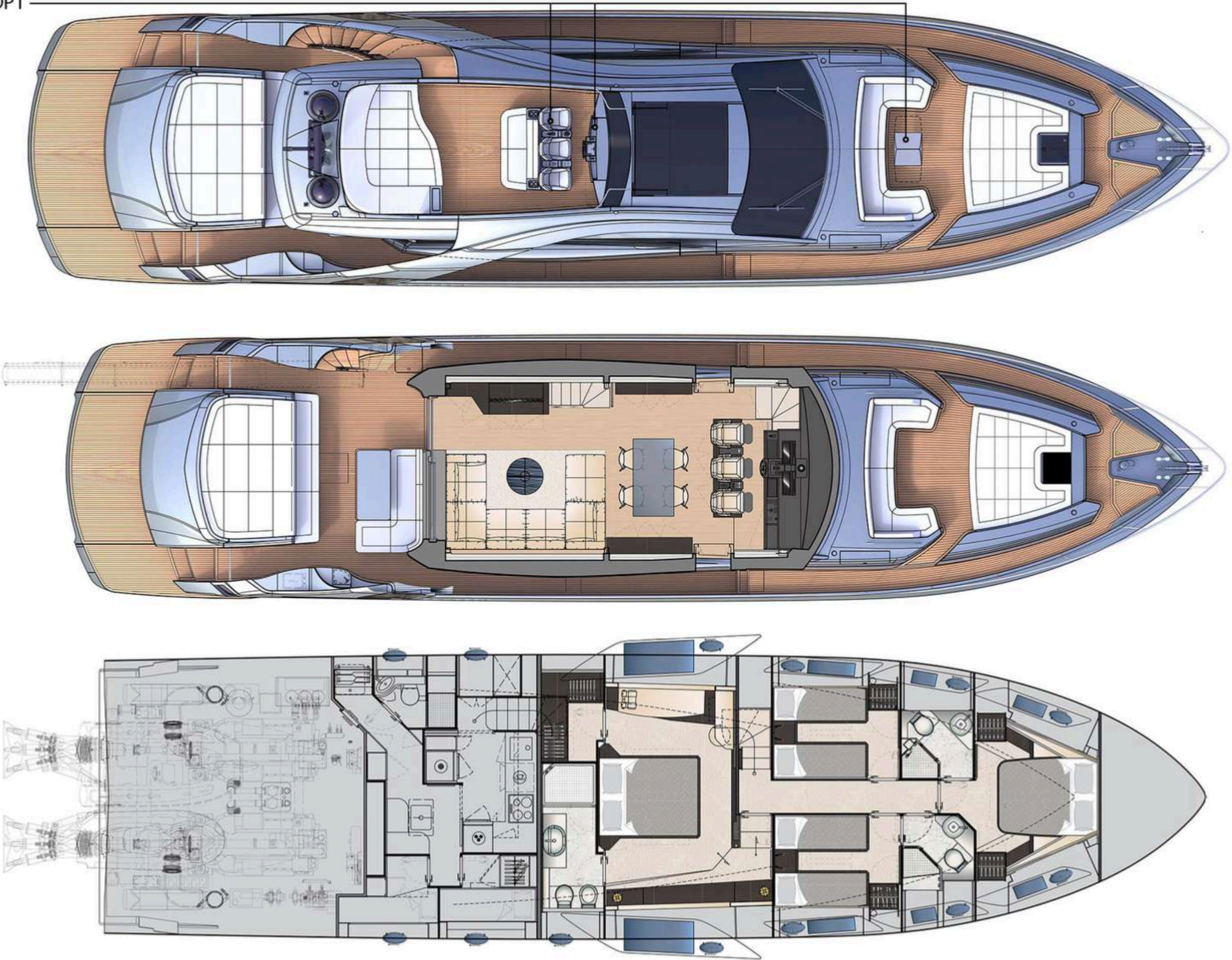


GENERAL ARRANGEMENT PLAN



C H E R R Y

OPT





All particulars and specifications relating to this yacht are given in good faith and are believed to be correct but cannot be guaranteed.