



ELVI

99' 1" (30.2m) | Posillipo | 2006

# ELVI

## BASIC SPECIFICATIONS

---

**BUILDER**

Posillipo

**BEAM (ft/m)**

22' 4" (6.8m)

**CRUISING/MAX SPEED**

23 / 30 Knots

**CREW**

6

**RANGE**

350 nm

**LENGTH (ft/m)**

99' 1" (30.2m)

**DRAFT (ft/m)**

7' 3" (2.2m)

**FUEL CONSUMPTION**

650 Litres/Hr

**ACCOMMODATION**

11 guests in 5 cabins

**INTERIOR DESIGNER**

N/A

**BUILT/REFIT**

2006 / 2021

**GROSS TONNAGE**

163 GT

**ENGINES**

M.T.U. (2x2400 HP) Diesel

**ARRANGEMENTS**

3 Double, 2 Twin

# ELVI

## KEY FEATURES

---

- › FULL-BEAM MASTER CABIN ON MAIN DECK
- › VERSATILE INTERIOR LAYOUT
- › AMPLE EXTERIOR DECK SPACES
- › LARGE AFT SWIMMING PLATFORM
- › VAST VARIETY OF WATER TOYS

# ELVI

## WATER TOYS

---

- › TENDER 4.50M WITH OUTBOARD ENGINE 60 HP
- › WATER SKI
- › WATER SOFA 3-SEATER
- › SNORKELING & FISHING EQUIPMENT
- › JET SKI SEA DOO GTI 1500CC 2019
- › 1 WAKEBOARD
- › 1 KAYAK
- › 2 SEABOB F55
- › TUBES
- › 1 SUP

ELVI





ELVI



ELVI





ELVI



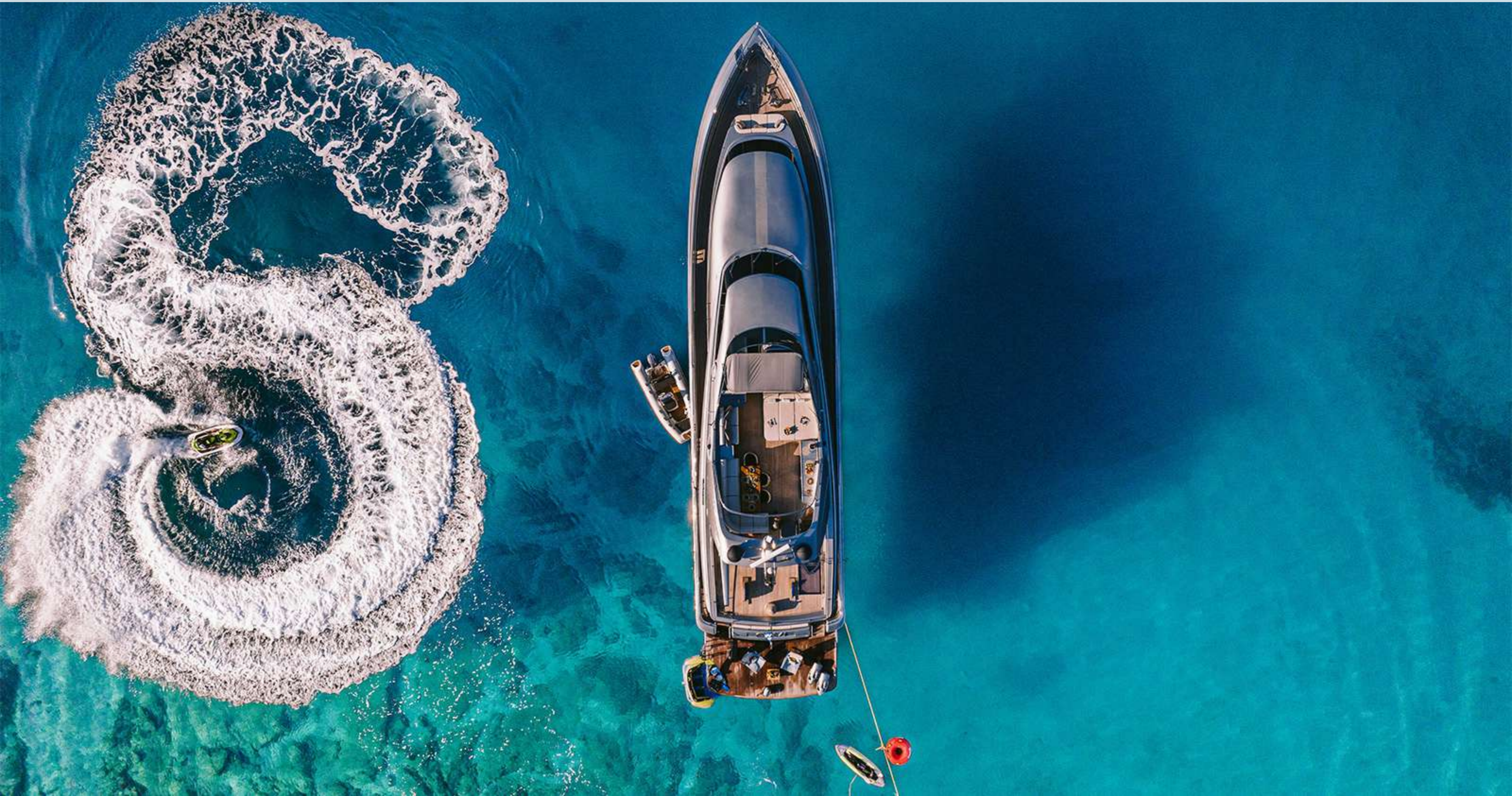


ELVI



ELVI



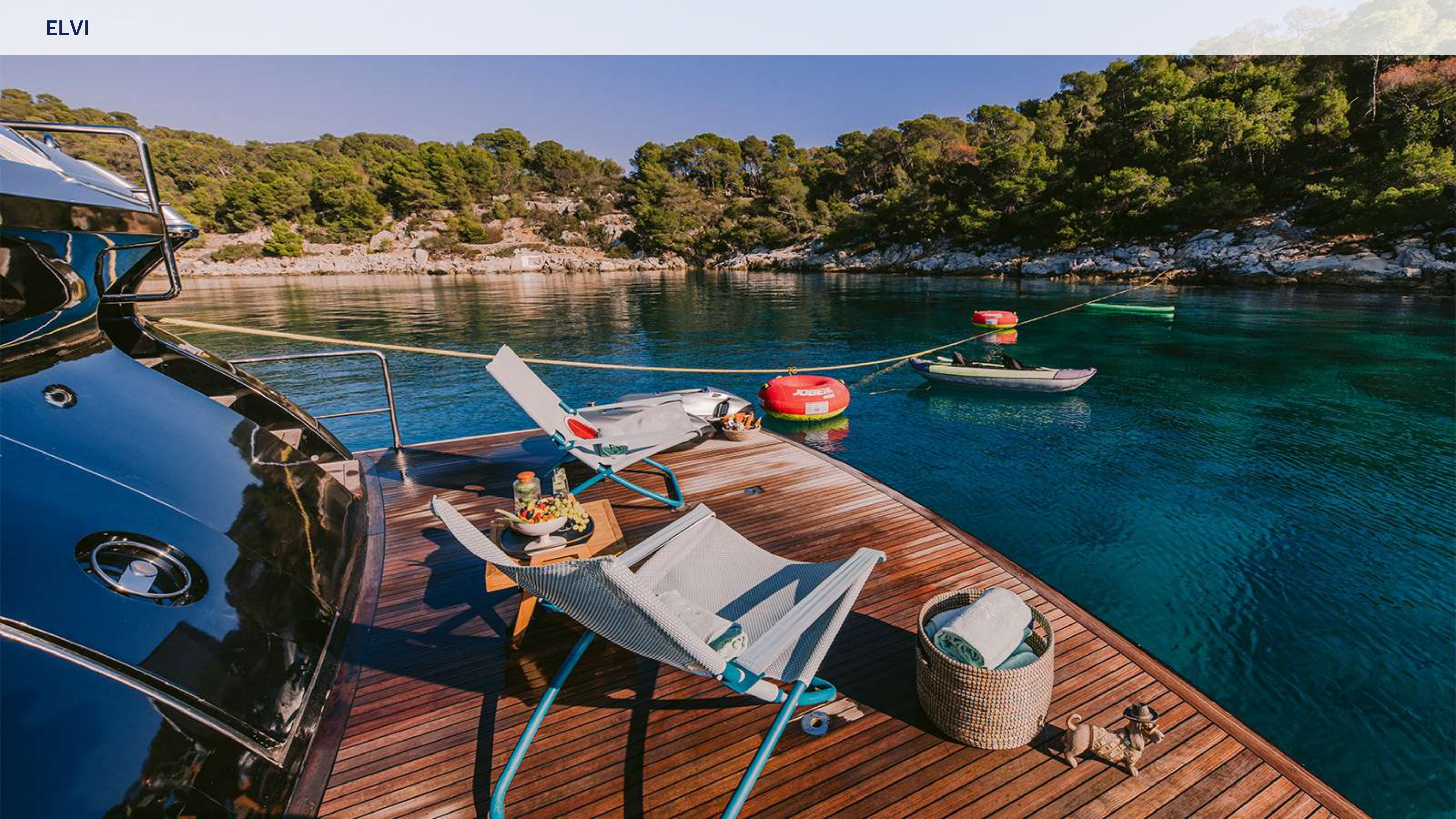


ELVI



ELVI





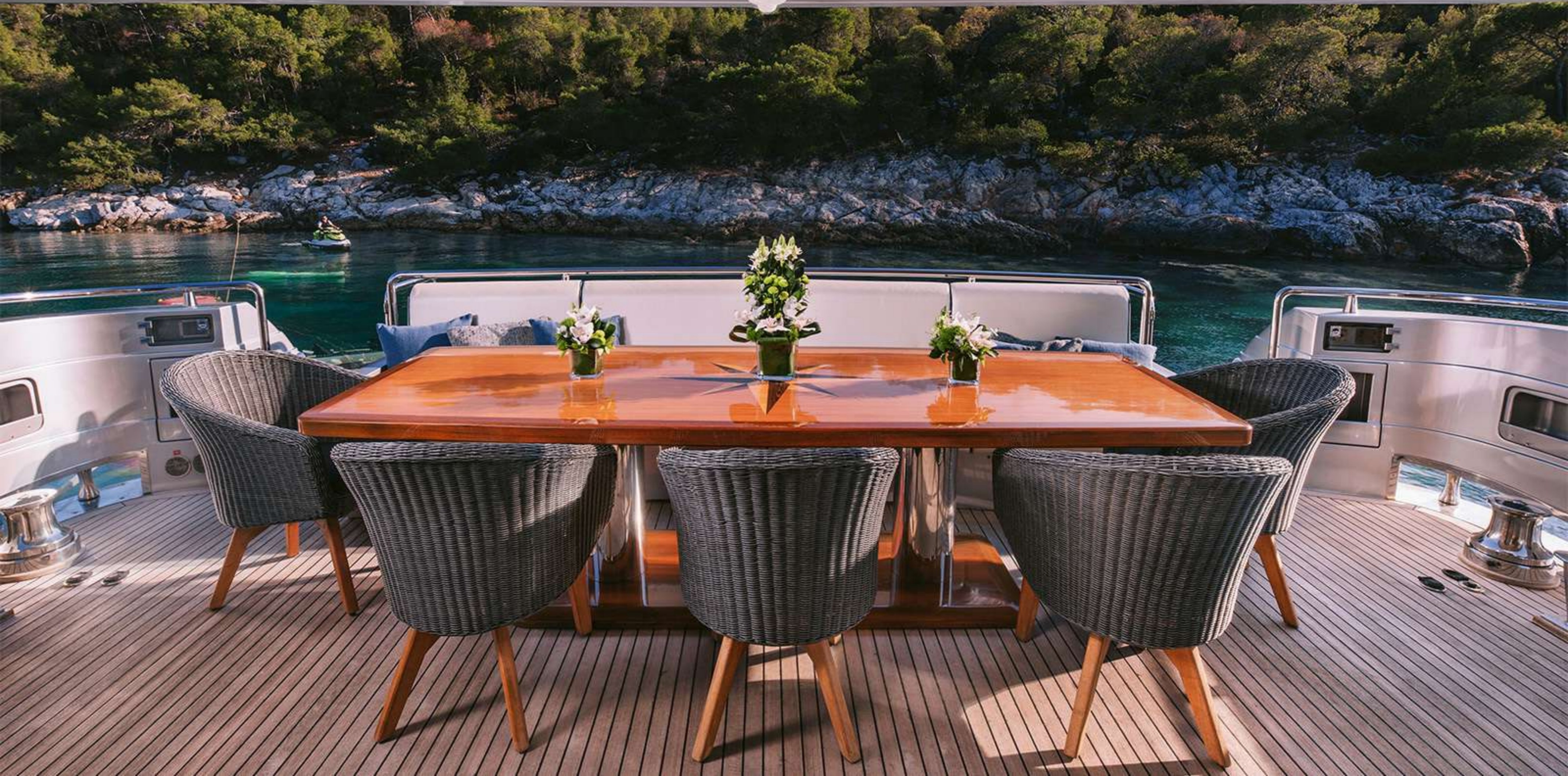


ELVI













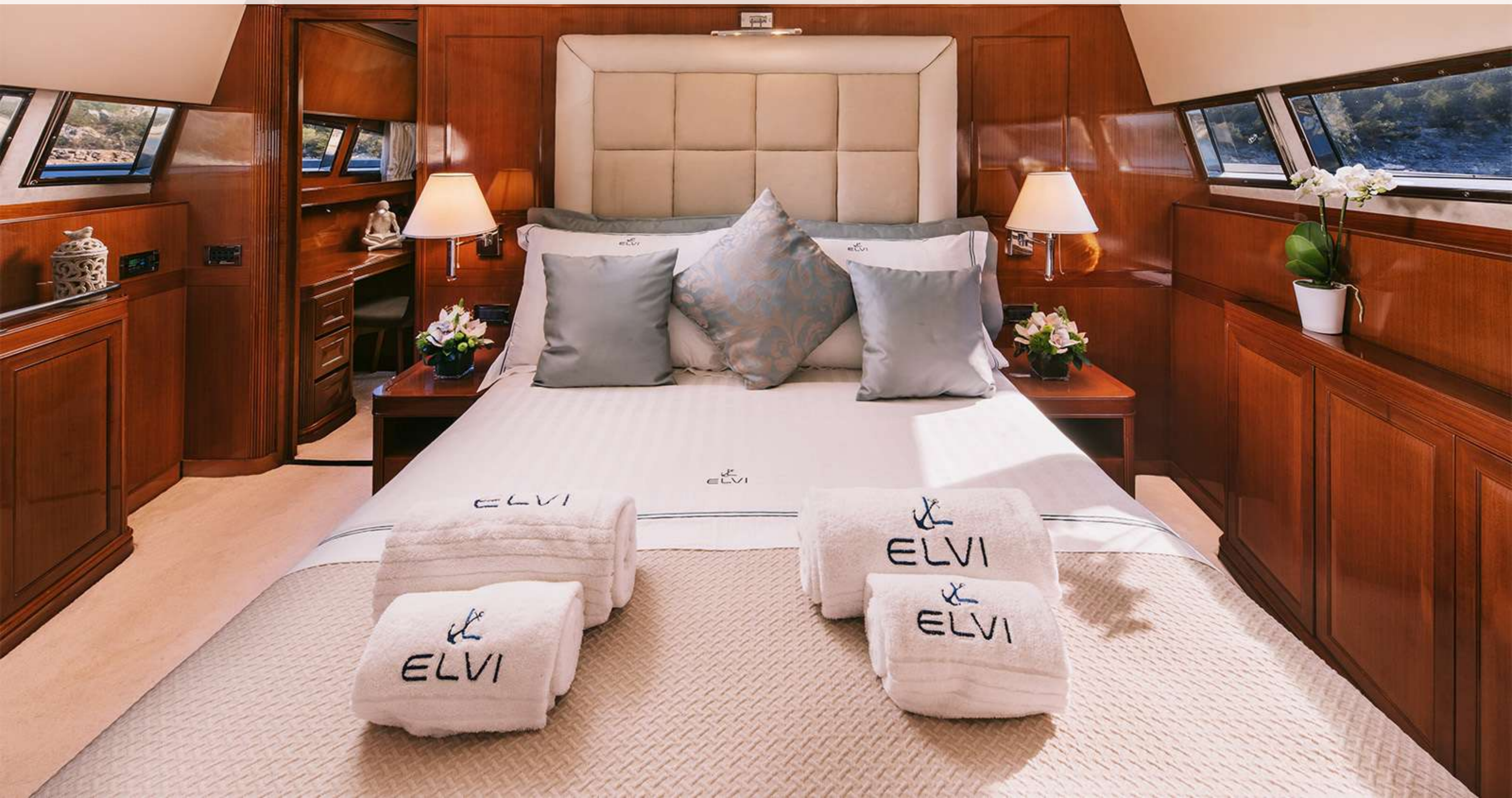






















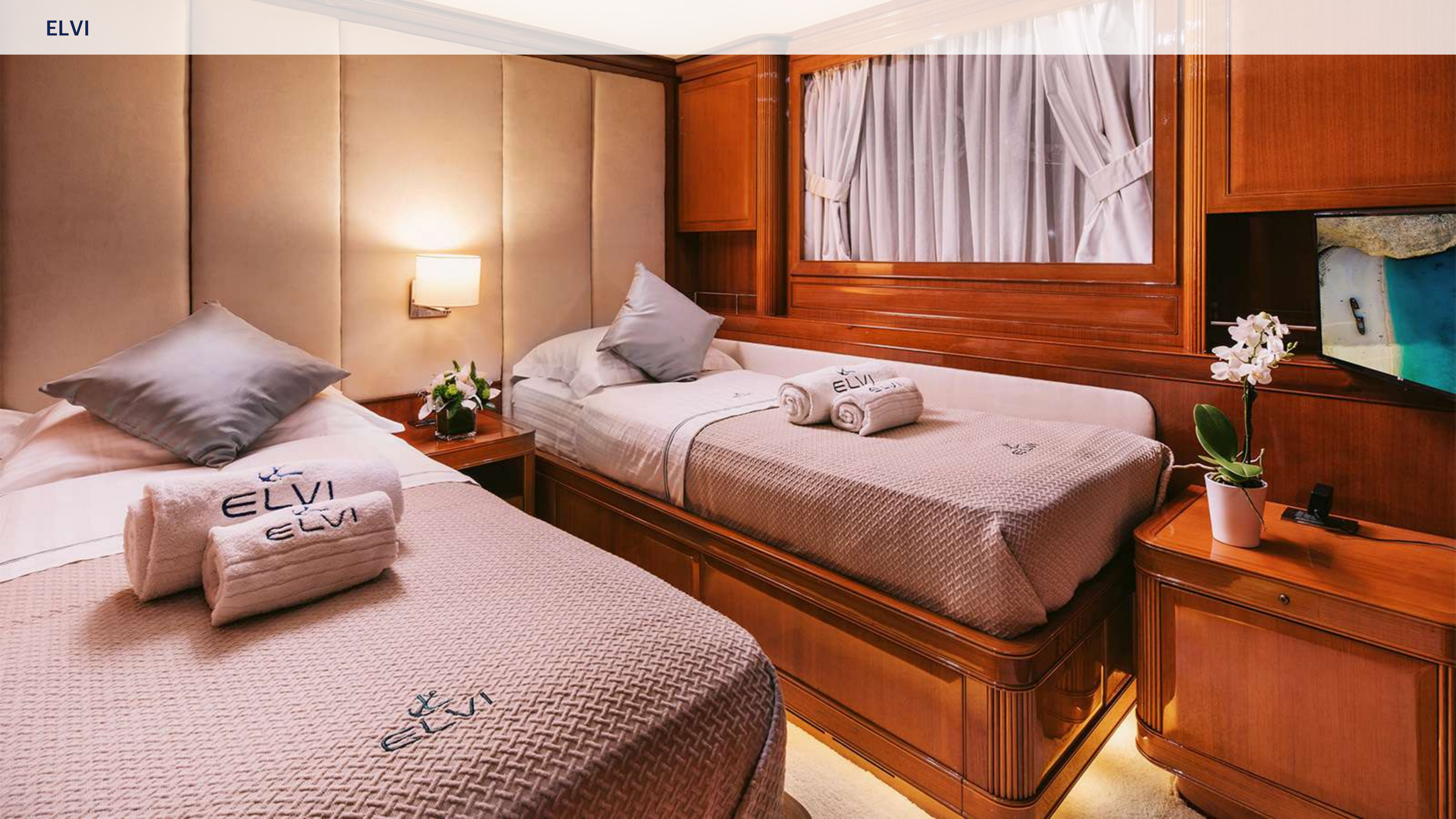




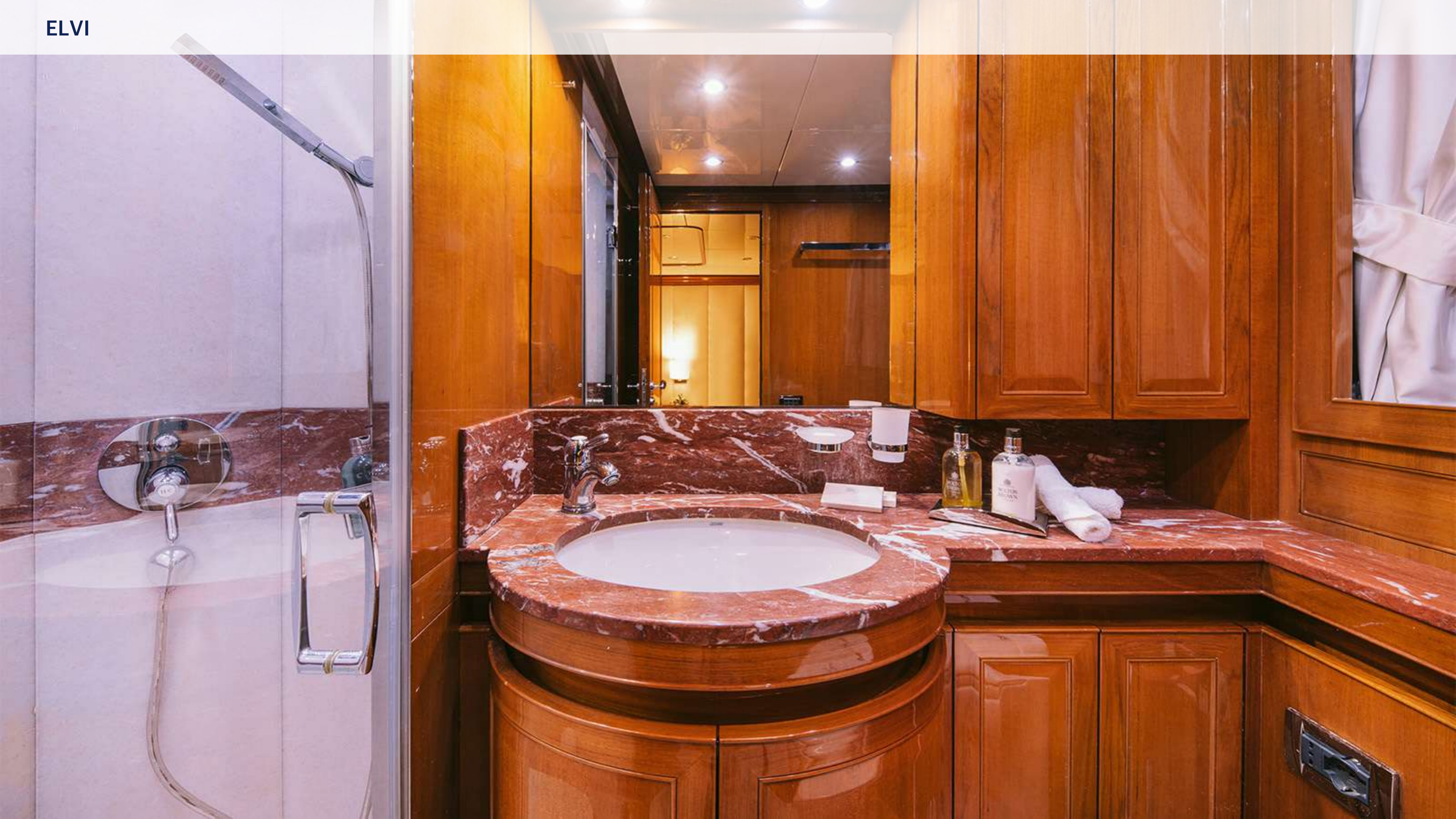




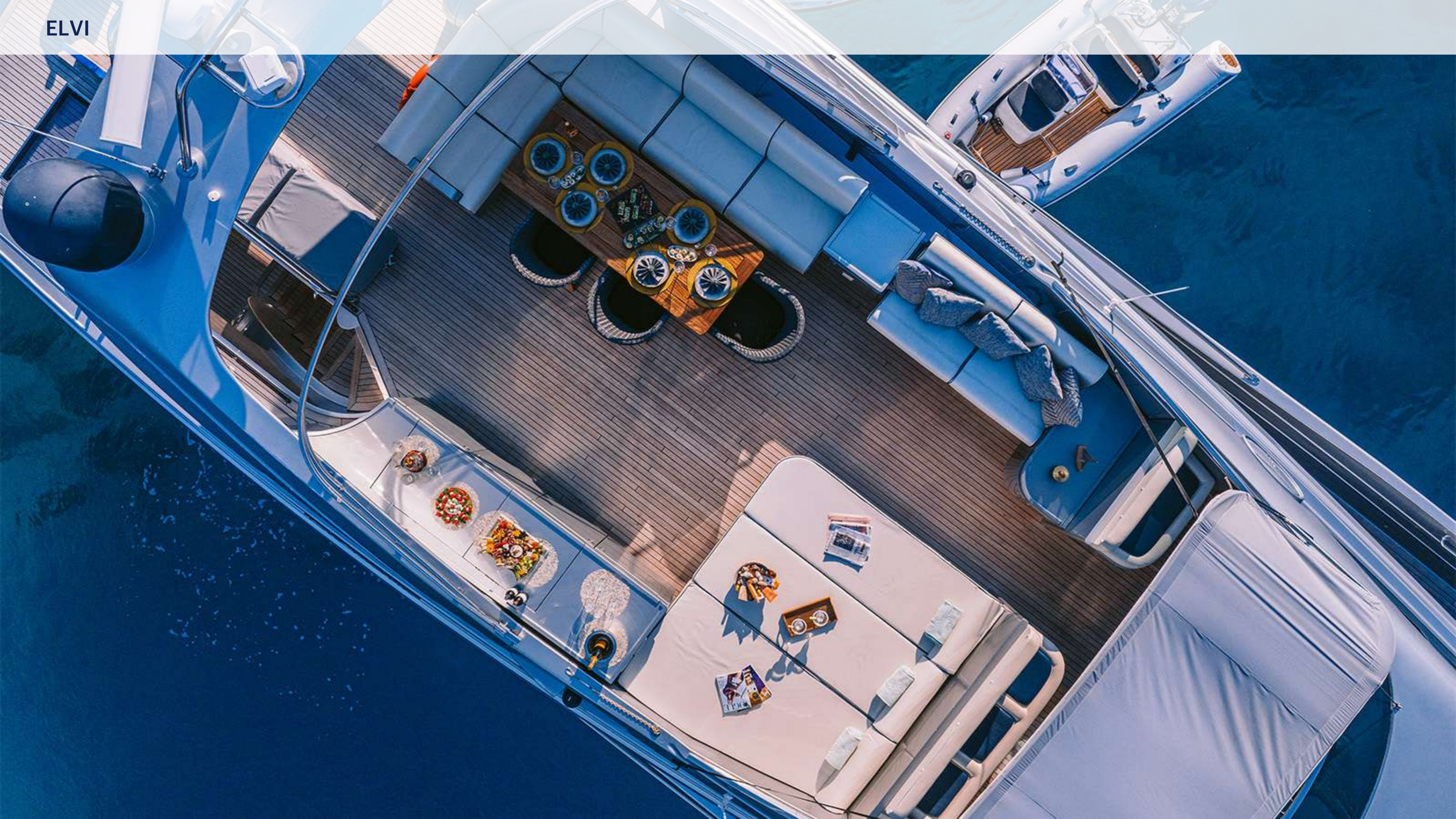




ELVI



ELVI

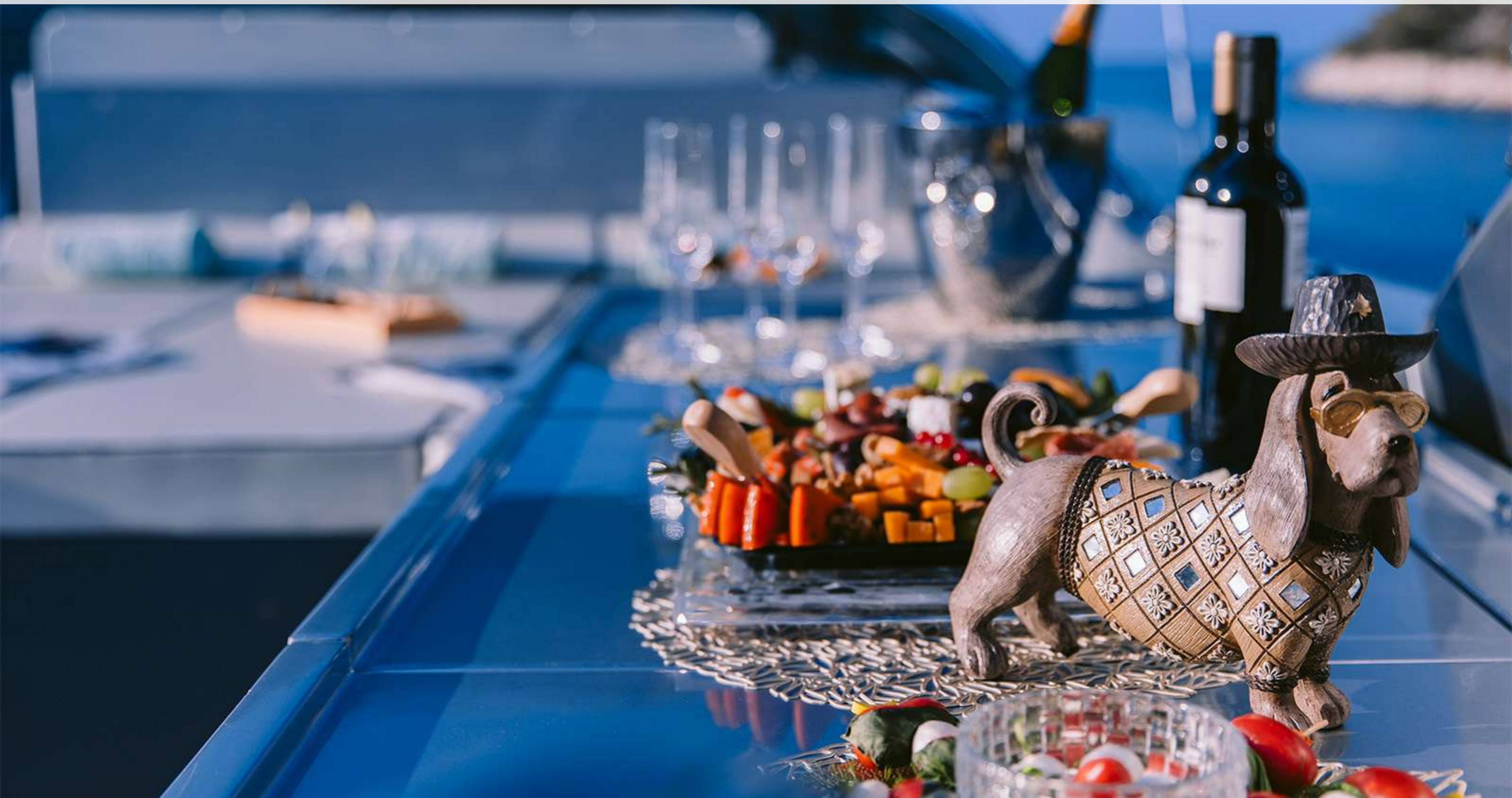






ELVI



















ELVI





