

# MY GRANIL



## SPECIFICATIONS

<b>Year:</b>	2014
<b>Beam:</b>	7.43 m
<b>L.O.A.:</b>	26.1 m
<b>GT:</b>	203
<b>Crew:</b>	4
<b>Guests:</b>	8
<b>Cabins:</b>	4
<b>Engines:</b>	MAN 2876 LE 403 6 cylinders heavy duty 2 x 331KW
<b>Cruise Speed/Top Speed:</b>	10 kn / 11.5 kn
<b>Builder/Designer:</b>	Cantiere delle Marche - Jonathan Quinn Barnett.
<b>Home Port:</b>	Genova

GRANIL is a 26.1 m Motor Yacht, built in Italy by Cantiere delle Marche and delivered in 2014. She is one of 6 Darwin 86 models. This luxury vessel's exterior design is the work of Jonathan Quinn Barnett.

### GUEST ACCOMMODATION

GraNil has been designed to comfortably accommodate up to 8 guests in 4 suites. She is also capable of carrying up to 4 crew onboard to ensure a relaxed luxury yacht experience.

### RANGE & PERFORMANCE

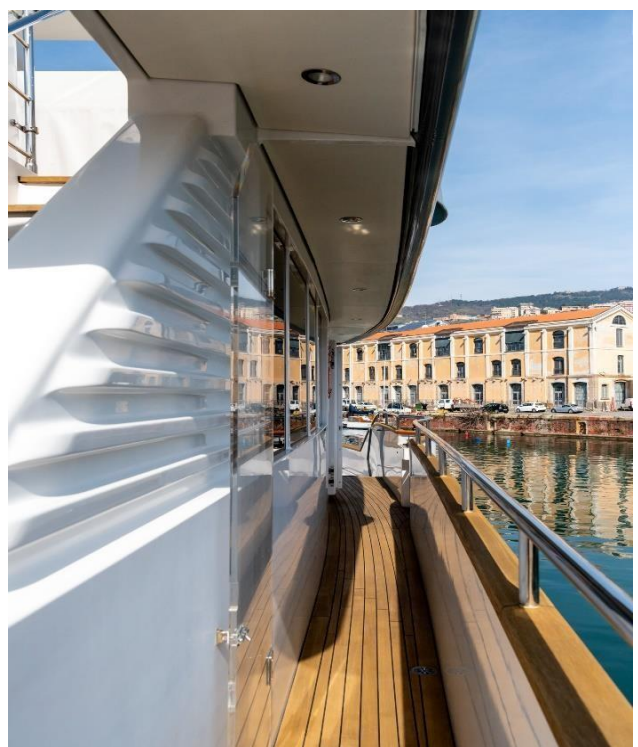
GraNil is built with a steel hull and aluminium superstructure, with teak decks, she has a beam of 7.43m (24'42"), a draft at full load of 2.3m (7'55") and she is RINA as well as MCA classed. Powered MAN 2876 LE 403 6 cylinders heavy duty 2 x 331KW, she comfortably cruises at 10 knots, reaches a maximum speed of 11/11.5 knots. Her water tanks store around 3,400 Litres of fresh water. She was built to DNV (Det Norske Veritas) classification society rules.

Available for Charter in WEST MED

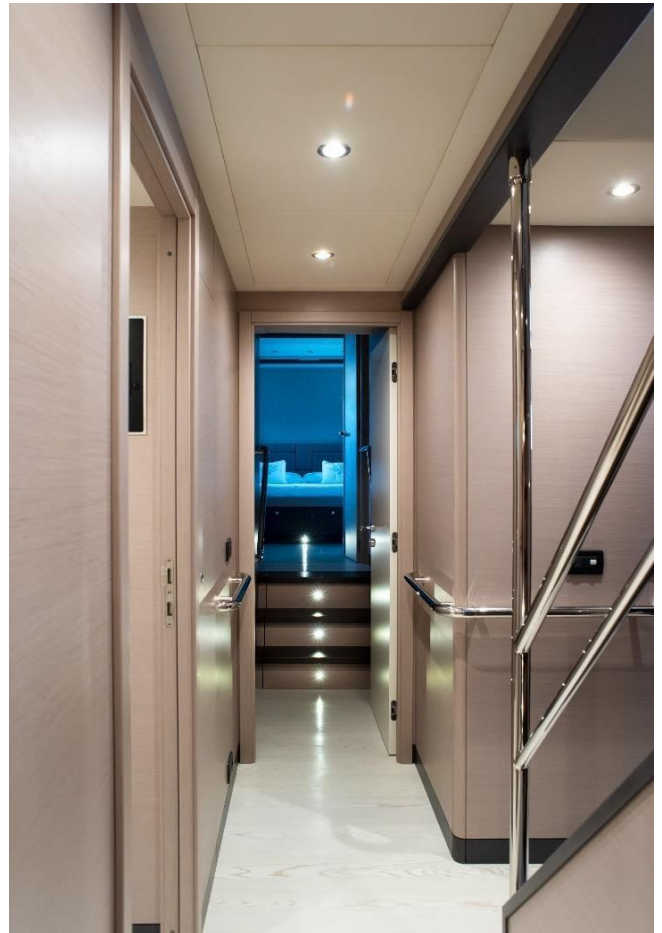
### Charter FEE:

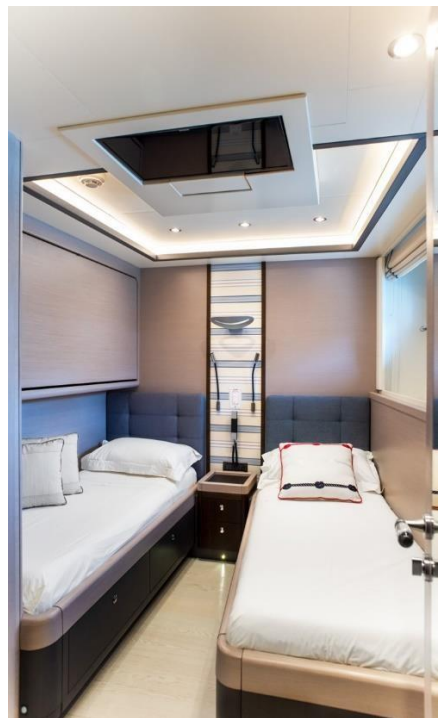
**Low Season (June & September) 50.000 € per week (no VAT)**

**High Season (July & August) 58.000 per week (no VAT)**







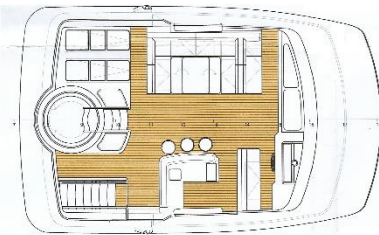
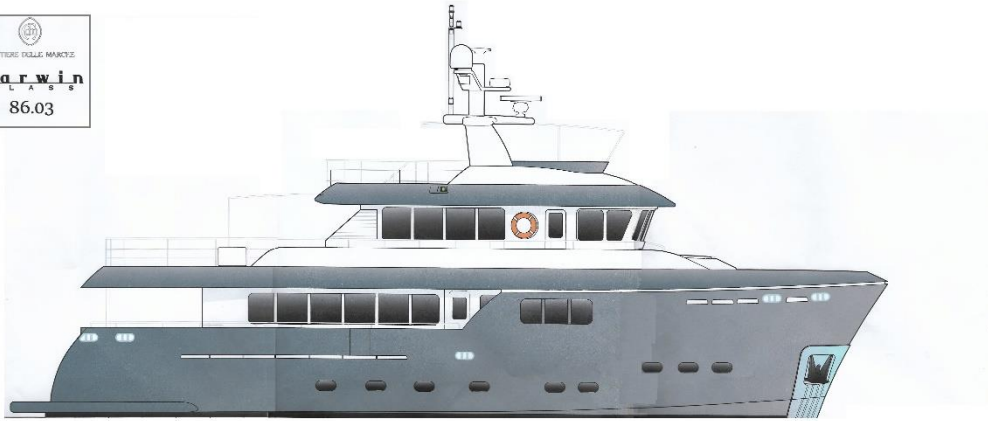








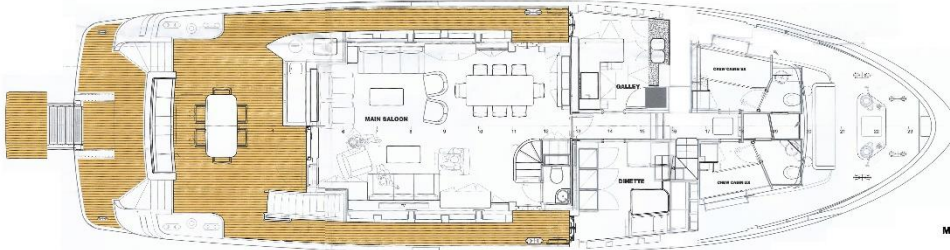
  
 CANTIERI DELLE MARCHE  
**Darwin**  
 CLASS  
 86.03



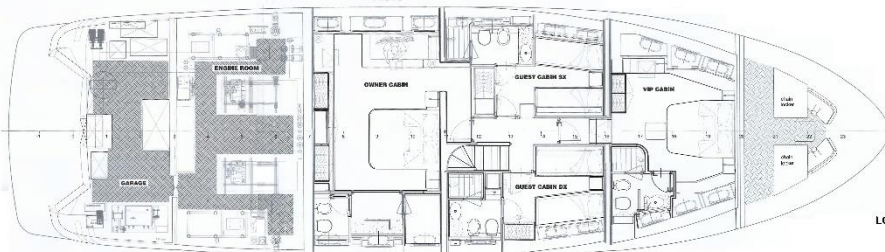
SUN DECK



UPPER DECK



MAIN DECK



LOWER DECK