



Hemabejo

147' (44.8m) | Viudes Yachts | 2012

Hemabejo

BASIC SPECIFICATIONS

BUILDER

Viudes Yachts

BEAM (ft/m)

31' 3" (9.5m)

CRUISING/MAX SPEED

11 / 13.8 Knots

CREW

9

RANGE

3000 nm

LENGTH (ft/m)

147' (44.8m)

DRAFT (ft/m)

9' 3" (2.8m)

FUEL CONSUMPTION

ACCOMMODATION

12 guests in 6 cabins

INTERIOR DESIGNER

Aldo Cichero

BUILT/REFIT

2012 / 2022

GROSS TONNAGE

496 GT

ENGINES

2 x Caterpillar C32 Acert 970kW

ARRANGEMENTS

2 Double, 2 Twin

Hemabejo

KEY FEATURES

- › TWO PRIVATE BALCONIES IN MASTER CABIN
- › INCREDIBLE AMENITIES INCLUDING A GYM
- › SPACIOUS SUN PAD ISLAND
- › DAY HEAD ON THE BEACH CLUB
- › FULL BEAM VIP
- › REFIT IN 2022
- › SAUNA & STEAM SHOWER
- › EXTENDED SWIM PLATFORM
- › EXCEPTIONALLY LARGE EXTERIOR SPACE
- › ZERO SPEED STABILIZERS

Hemabejo

WATER TOYS

- › 1 X CASTOLDI JET TENDER 6.3MT
- › 1 X WILLIAMS JET TENDER 4.6MT
- › 1 X AQUA SEA SCOOTER
- › FOILING BOARD
- › JET BOARD
- › 2 X SUP'S
- › SNORKELING EQUIPMENT
- › 4 X SCUBA PRO SETS
- › BAUER DIVE COMPRESSOR





HEMABEJO









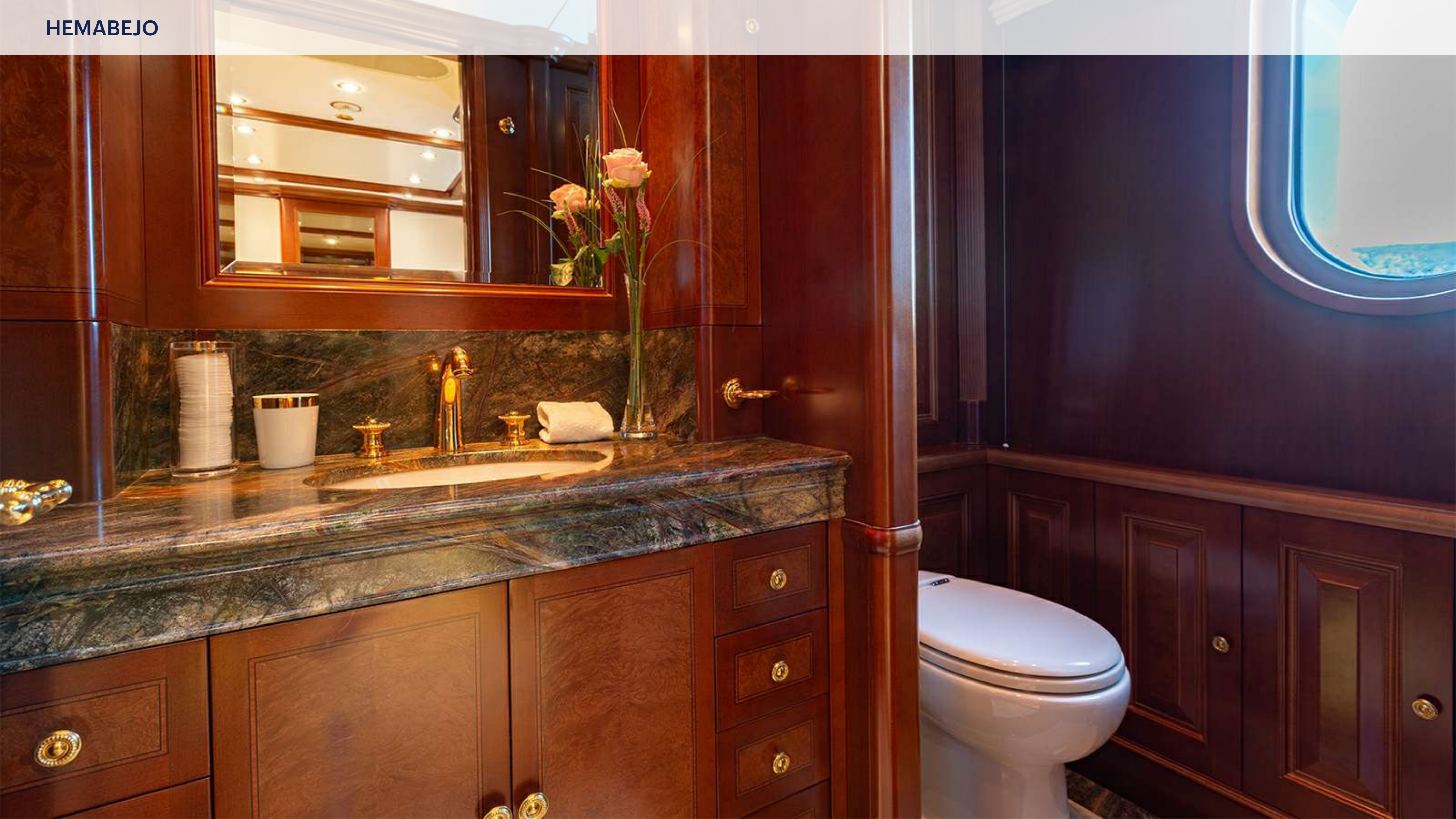






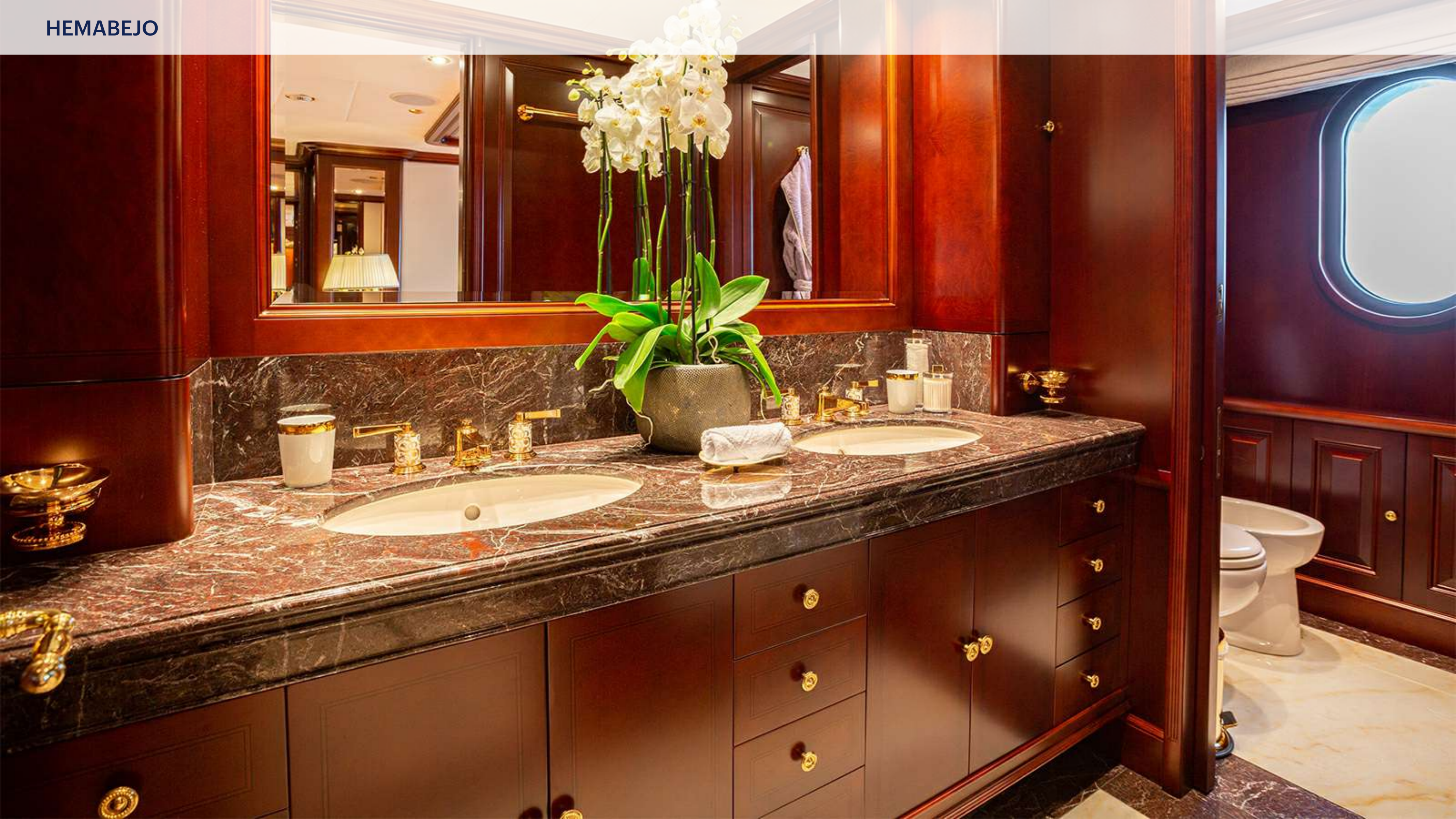






















































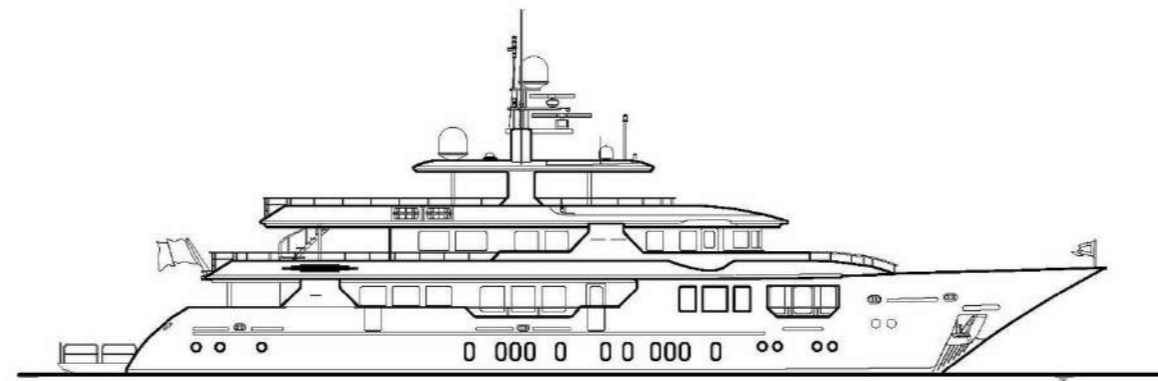




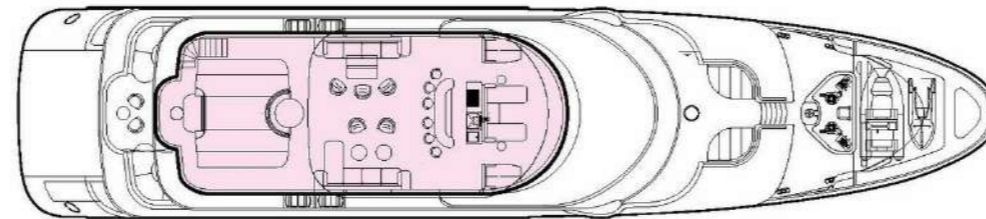




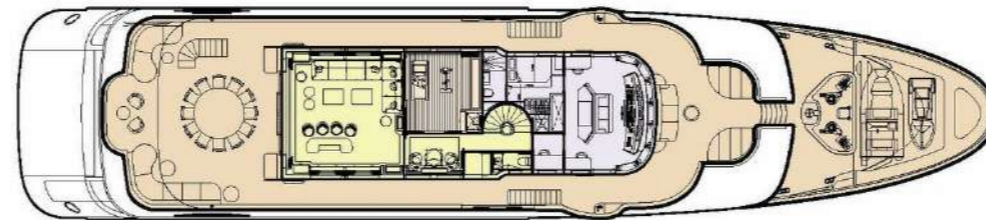
GENERAL ARRANGEMENT



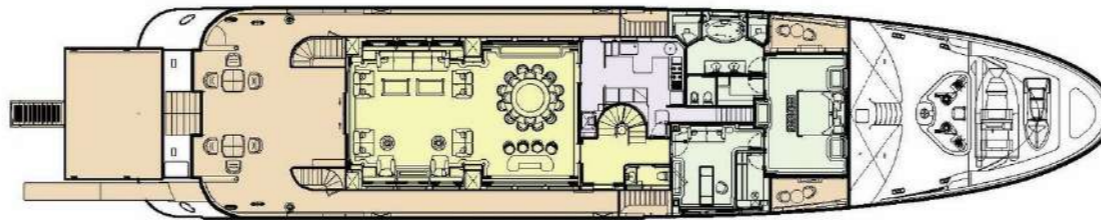
PROFILE



SUNDECK



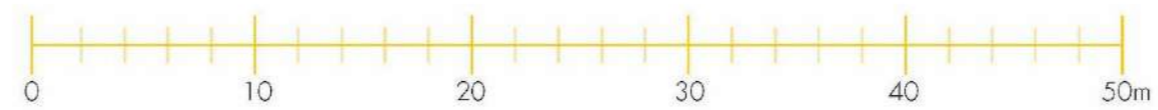
BRIDGE DECK



MAIN DECK



LOWER DECK



KEY

- DECK
- GUEST AREAS
- MASTER CABIN
- FITNESS & WELLBEING
- SUNDECK
- GUEST CABINS
- CREW AREAS