

HOSPITALITY

164' 1" (50m) | Westport | 2011

HOSPITALITY

164' 1" (50m) | Westport | 2011



GENERAL DESCRIPTION

| | |
|------------------|------------------------------|
| BUILDER | Westport |
| YEAR BUILT | 2011 |
| YEAR REFIT | 2021 |
| LENGTH (ft/m) | 164' 1" (50m) |
| CABINS/GUESTS | 7/12 |
| BEAM (ft/m) | 30' 8" (9.34m) |
| MAIN ENGINES | 2 x MTU 16V 4000 M90 3650 hp |
| MAX SPEED (kn) | 25 |
| FLAG | Cayman Islands |
| GRT | 492 |
| HULL TYPE | Semi-Displacement |
| HULL MATERIAL | GRP |
| FUEL CONSUMPTION | 132 US Gall/Hr |
| RATES | \$235,000 |

HOSPITALITY

164' 1" (50m) | Westport | 2011

AMENITIES

JACUZZI

GYM

SPA

SLIDE

ZERO SPEED STABILIZERS

STABILIZERS UNDERWAY

KID FRIENDLY

RICH TOY COLLECTION

HOSPITALITY

164' 1" (50m) | Westport | 2011

AMENITIES

Info

Jacuzzi Dip Pool

- Located on the sun deck, 2 x 25KW Instahot in-line heaters.
- New April 2019, New Paint, New Pentair spa jets.

Gym Equipment

- Bowflex Free weights
- Peloton Spin Bike - 2021

Ship's Safes

- 2x Captain's Cabin
- 1x Master
- 1x VIP cabin

Dive Compressor

- Brownies Third Lung - YP55DF with 3 bottles of compressed air bank is located in the garage for quick refilling. Each bottle is 15lbs, max pressure 4,500psi with custom refill manifold.

HOSPITALITY

164' 1" (50m) | Westport | 2011

ACCOMMODATION

| | |
|-------|----|
| GUEST | 12 |
| CREW | 11 |

HOSPITALITY

164' 1" (50m) | Westport | 2011

TENDERS AND WATERSPORT EQUIPMENT

- 2x E-foil
- 2x Sea-Doo GTX 300 Limited Wave-runners
- 1x Yamaha FX Cruiser SVHO wave runner
- 1x 17ft Brig /rib with 80hp outboard engine
- 3x SeaBobs
- 1x Flyboard – Zapata
- 1x Water Slide
- 2x Solid Paddle Boards – SUP
- 2x AquaBanas Platforms
- 1x Wakeboard (Mens) – Hyperlite
- 1x Wakeboard (Women's) – Hyperlite
- 1x Wakeskate – Ronix
- 1x Waterskis - O'Brien
- 2x Rockin Marble Inflatable Tube – SportsStuff
- 1x Inflatable Tube - Airhead Revolution
- 1x Kitesurf Training Kite – Ozone
- 1x Kite – Prism
- 20x Snorkel Sets - Cressi & Ozone
- 8 x full sets of SCUBA equipment, including many spare sizes & extra equipment, Bauer compressor, and cascade filling system
- 1x Soccer Ball – Nike
- 1x Football
- 1x Rugby Balls
- 1x Frisbee

HOSPITALITY

164' 1" (50m) | Westport | 2011

BOW



PROFILE



HOSPITALITY

164' 1" (50m) | Westport | 2011

PROFILE



WATER TOYS



HOSPITALITY

164' 1" (50m) | Westport | 2011

HOSPITALITY



MAIN DECK - SALON



HOSPITALITY

164' 1" (50m) | Westport | 2011

MAIN DECK - SALON



MAIN DECK - FORMAL DINING



HOSPITALITY

164' 1" (50m) | Westport | 2011

MAIN DECK - SALON



MAIN DECK - GYM / CONVERTIBLE SPA



HOSPITALITY

164' 1" (50m) | Westport | 2011

PRIMARY STATEROOM



PRIMARY STATEROOM



HOSPITALITY

164' 1" (50m) | Westport | 2011

PRIMARY STATEROOM



PRIMARY STATEROOM



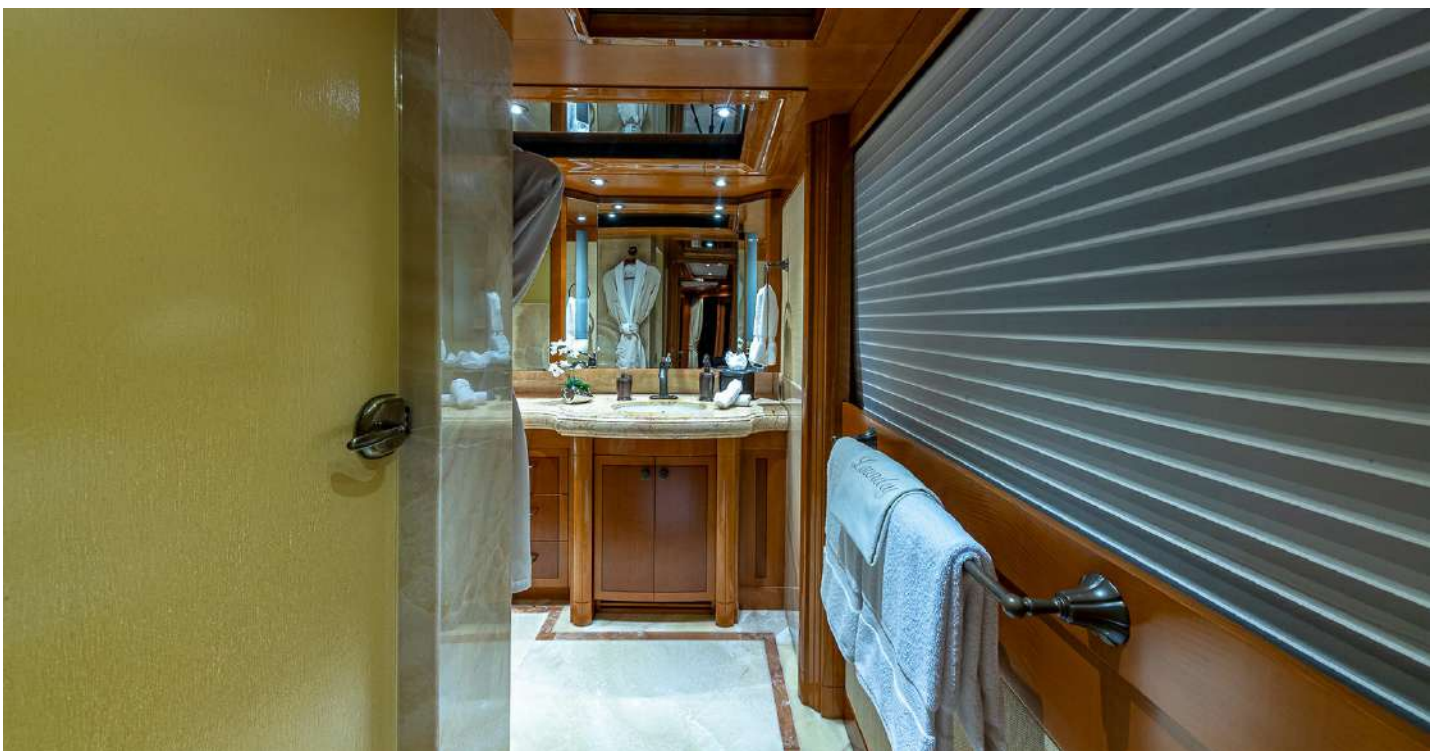
HOSPITALITY

164' 1" (50m) | Westport | 2011

PRIMARY STATEROOM



PRIMARY STATEROOM - EN SUITE



HOSPITALITY

164' 1" (50m) | Westport | 2011

PRIMARY STATEROOM - EN SUITE



VIP STATEROOM



HOSPITALITY

164' 1" (50m) | Westport | 2011

VIP STATEROOM



VIP STATEROOM



HOSPITALITY

164' 1" (50m) | Westport | 2011

VIP STATEROOM - EN SUITE



VIP STATEROOM



HOSPITALITY

164' 1" (50m) | Westport | 2011

VIP STATEROOM



VIP STATEROOM OFFICE



HOSPITALITY

164' 1" (50m) | Westport | 2011

VIP STATEROOM



VIP STATEROOM



HOSPITALITY

164' 1" (50m) | Westport | 2011

VIP STATEROOM - EN SUITE



VIP STATEROOM - EN SUITE



HOSPITALITY

164' 1" (50m) | Westport | 2011

GUEST STATEROOM



GUEST STATEROOM



HOSPITALITY

164' 1" (50m) | Westport | 2011

GUEST STATEROOM



GUEST STATEROOM - EN SUITE BATHROOM



HOSPITALITY

164' 1" (50m) | Westport | 2011

GUEST STATEROOM



GUEST STATEROOM - EN SUITE BATHROOM



HOSPITALITY

164' 1" (50m) | Westport | 2011

GUEST STATEROOM



GUEST STATEROOM



HOSPITALITY

164' 1" (50m) | Westport | 2011

GUEST STATEROOM - EN SUITE BATHROOM



GUEST STATEROOM - EN SUITE



HOSPITALITY

164' 1" (50m) | Westport | 2011

GUEST STATEROOM - EN SUITE



GUEST STATEROOM - EN SUITE BATHROOM



HOSPITALITY

164' 1" (50m) | Westport | 2011

GUEST STATEROOM - EN SUITE BATHROOM



GUEST STATEROOM - EN SUITE



HOSPITALITY

164' 1" (50m) | Westport | 2011

GUEST STATEROOM - EN SUITE BATHROOM



GUEST STATEROOM - EN SUITE



HOSPITALITY

164' 1" (50m) | Westport | 2011



BRIDGE



HOSPITALITY

164' 1" (50m) | Westport | 2011

BRIDGE DECK - SKYLOUNGE



BRIDGE DECK - SKYLOUNGE



HOSPITALITY

164' 1" (50m) | Westport | 2011

BRIDGE DECK - SKYLOUNGE



BRIDGE DECK - SKYLOUNGE



HOSPITALITY

164' 1" (50m) | Westport | 2011

BRIDGE DECK AFT



BRIDGE DECK AFT



HOSPITALITY

164' 1" (50m) | Westport | 2011

BRIDGE AFT DECK



BRIDGE DECK AFT



HOSPITALITY

164' 1" (50m) | Westport | 2011

BRIDGE DECK AFT



BRIDGE DECK AFT



HOSPITALITY

164' 1" (50m) | Westport | 2011

SUN DECK



SUN DECK



HOSPITALITY

164' 1" (50m) | Westport | 2011

SUN DECK



SUN DECK



HOSPITALITY

164' 1" (50m) | Westport | 2011

SUN DECK



SUN DECK



HOSPITALITY

164' 1" (50m) | Westport | 2011

SUN DECK - JACUZZI



SUN DECK - JACUZZI



HOSPITALITY

164' 1" (50m) | Westport | 2011

BOW



AERIAL WITH TENDER



HOSPITALITY

164' 1" (50m) | Westport | 2011

AERIAL WITH TENDER



AERIAL



HOSPITALITY

164' 1" (50m) | Westport | 2011

2020 FREEMAN 42 LR TENDER



2020 FREEMAN 42 LR TENDER



HOSPITALITY

164' 1" (50m) | Westport | 2011

2020 FREEMAN 42 LR TENDER



2020 FREEMAN 42 LR TENDER



HOSPITALITY

164' 1" (50m) | Westport | 2011

2020 FREEMAN 42 LR TENDER



2020 FREEMAN 42 LR TENDER



HOSPITALITY

164' 1" (50m) | Westport | 2011

WATER TOYS



WATER TOYS



HOSPITALITY

164' 1" (50m) | Westport | 2011

WATER TOYS



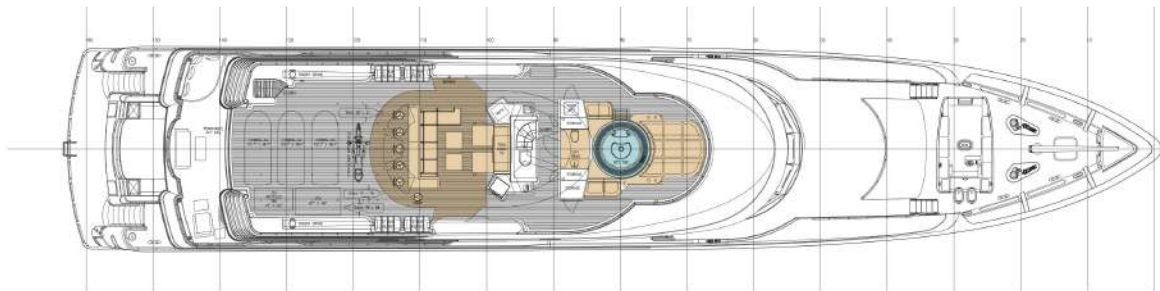
PROFILE



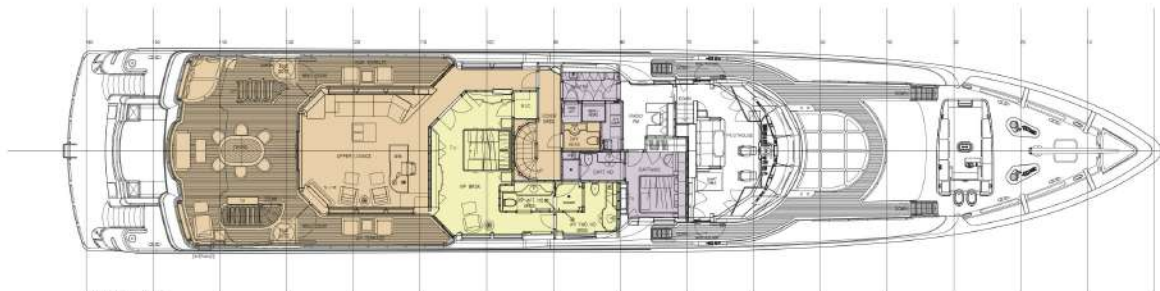
HOSPITALITY

164' 1" (50m) | Westport | 2011

GENERAL ARRANGEMENT



SUN DECK



BRIDGE DECK

- STATEROOMS
- JACUZZI
- GUEST COMMON AREAS
- CREW AREAS/CABINS
- ENGINE ROOM

| | |
|-------------|----------------|
| PROJECT NO. | 100-1000000000 |
| DATE | 11-10-11 |
| SCALE | 1/8" = 1'-0" |

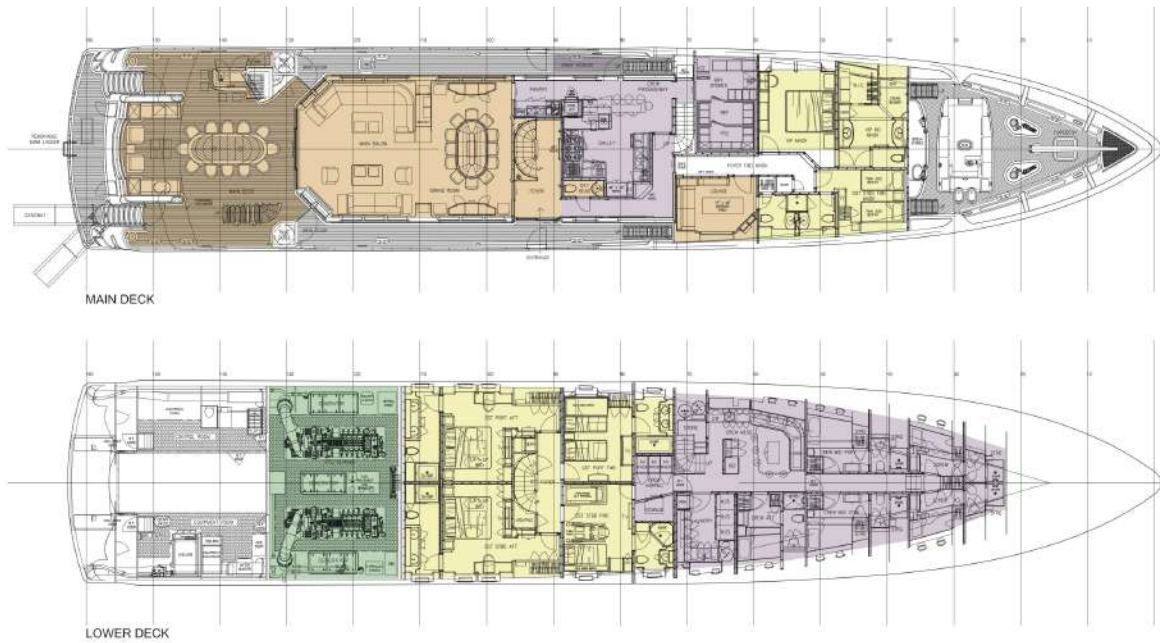
NOTE: DIMENSIONS SHOWN IN PARENTS ARE SHOWN

| | | | |
|--|--|--|---|
| | WESTPORT 164' MOTOR YACHT | DATE | 11-10-11 |
| | PROJECT NO. 100-1000000000 PROJECT NAME WESTPORT 164' MOTOR YACHT PROJECT LOCATION WESTPORT, MA PROJECT ARCHITECT JONAS & SONS YACHTS | PROFILE AND ARRANGEMENT SHEET NO. 5208 SHEET TOTAL 11 OF 11 | DATE 11-10-11 DRAWN BY JONAS & SONS YACHTS |

HOSPITALITY

164' 1" (50m) | Westport | 2011

GENERAL ARRANGEMENT



| | | |
|---|--------------------|--------|
| 1 | STATEROOMS | YELLOW |
| 2 | JACUZZI | BLUE |
| 3 | GUEST COMMON AREAS | BROWN |
| 4 | CREW AREAS/CABINS | PURPLE |
| 5 | ENGINE ROOM | GREEN |

NOTE: DIMENSIONS SHOWN IN PARENTS ARE SHOWN

- STATEROOMS
- JACUZZI
- GUEST COMMON AREAS
- CREW AREAS/CABINS
- ENGINE ROOM

| | | | |
|--|---------------------------|-------|----------|
| BOONALDI YACHTS DESIGNS | WESTPORT 164' MOTOR YACHT | | REF NO. |
| | PROFILE AND ARRANGEMENT | | 5208 |
| DATE ISSUED | 11/11 | SCALE | AS SHOWN |
| BY | DATE | BY | DATE |