



**IMMERSTIVE**  
FOR CHARTER





# IMMERSIVE

Award-winning 50.42m motor yacht IMMERSIVE is new to the charter market this season. Custom-built by Turquoise Yachts, one of Turkey's leading shipyards, IMMERSIVE features a sleek modern design, with a striking exterior that is sure to turn heads wherever she goes.

## OVERVIEW

Designed by Jean-Guy Verges, IMMERSIVE's open-concept interior layout and huge internal volume give her the feel of a much larger yacht. She has accommodation for up to twelve guests across seven luxurious staterooms and comes equipped with a full range of onboard amenities including a jacuzzi pool on the sun deck.

A true family yacht, IMMERSIVE promises to offer guests an unforgettable charter experience.

## ACCOMMODATION

IMMERSIVE's magnificent full-beam master suite is located forward on the main deck and is accessed via a private owner's lobby and study.

IMMERSIVE's first VIP stateroom is also located on the main deck with a second VIP suite on the upper deck. The remaining guest accommodation is located on the lower deck and includes two queen and two twin staterooms set around a central staircase.

IMMERSIVE has accommodation for her professional eleven-person crew on the lower deck.

## S P E C I F I C A T I O N S

50.42M | TURQUOISE YACHTS | 2013 / 2023

 LENGTH 50.42m

 BEAM 9.30m

 NO. OF GUESTS 12

 MAX SPEED 14.5 kts

 GUEST CABINS 7

 RANGE 4,500 nm

## INTERIOR

Styled by Jean-Guy Verges, IMMERSIVE's contemporary interior design is warm and inviting with an emphasis on natural lighting. Featuring contrasting woods and off-white lacquer, the interior incorporates the yacht's prestigious Turkish heritage.

## EXTERIOR

Featuring a minimalist exterior design from the inhouse team at Turquoise, IMMERSIVE is built from Turkish steel. Large windows provide unobstructed views of your destination while her wealth of exterior lounge and dining areas will ensure you can enjoy the outdoor lifestyle.











SUN DECK





UPPER DECK AFT







UPPER DECK VIP CABIN





MAIN DECK AFT



SWIMMING PLATFORM



MAIN DECK DINING AREA





MAIN DECK SALON



MAIN DECK SALON



MAIN DECK MASTER CABIN



MAIN DECK MASTER BATHROOM



MAIN DECK VIP CABIN



MAIN DECK GUEST BATHROOM



LOWER DECK TWIN CABIN



LOWER DECK TWIN CABIN





LOWER DECK DOUBLE CABIN







## T O Y S &amp; T E N D E R S

## T O Y S , E Q U I P M E N T &amp; A C C E S S O R I E S

Chase Boat: 13m Ocean 43 Goldfish

- Top speed 53 knots
- Twin Yanmar Diesel 370 Hp (2.1 Lit/NM at 40 knots)

Main Tender: Castoldi Jet Tender 21

Rescue Tender: Zodiac RIBO 450 Blanc

Jet Skis: 2 x Kawasaki STX-15

Dive Equipment: 5 Full Diving Sets, compressor

Watersports Equipment:

- 1 Pcs Transparent Double Person Kayak
- 1 Pcs Paddle Board - Hobie Mirage I Eclipse 11 ( Inflatable )
- 1 Pcs Canoe - Hobie Mirage I Trek 14 Duo ( Inflatable )
- 1 Pcs Scuba Jet Pro All-In One
- 1 Pcs Seabob F5SR
- 1 Pcs E Surf – Awake Ravik 3
- 1 pcs E-Foil – Lift Foil E4
- 1 Pcs – Slide (6m) – Fun Air
- 1 Pcs Swimming Pool – Yacht Beach
- 4 Pcs Swimming Platform – Yacht Beach
- 2 pcs Towable Ringo
- 1 Pcs 2 Person Towable Ringo
- 2 Pcs Waterskies
- 1 Pcs Wakeboard
- 1 Pcs Banana
- 1 Pcs ringo (Double)

# S P E C I F I C A T I O N S

---

## DECK EQUIPMENT

- Jacuzzi on Sun Deck

## COMMUNICATIONS EQUIPMENT

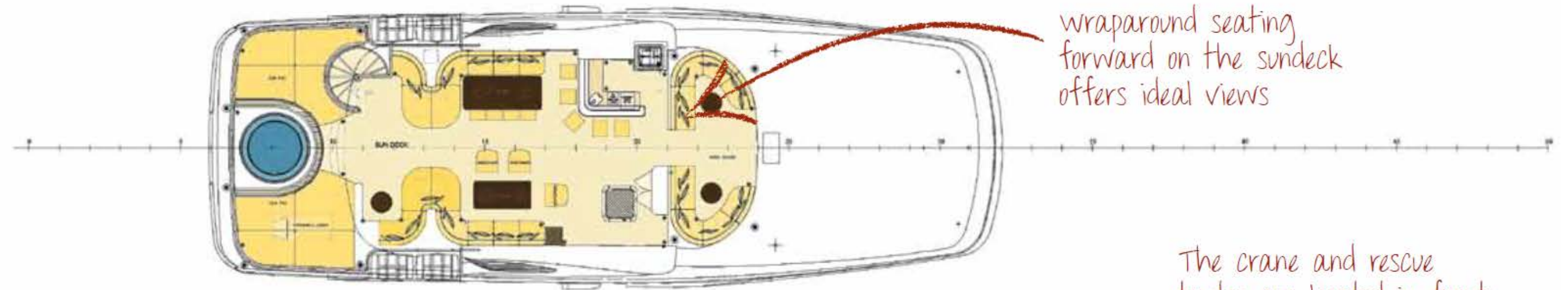
- VHF: Furuno X-band (2)
- MF/HF: Furuno MF/ HFwith DSC
- Intercom: Furuno

## AUDIO-VISUAL EQUIPMENT

- A/V And IT Network: ANT United Kingdom
- Main Salon: 42"HD TV, Sat TV, Blu Ray DVD, Apple TV and I-pod dock, Apple I-pad control, 5.1 surround sound
- Master Cabin: 42"HD TV, Sat TV, Blu Ray DVD, Apple TV and I-pod dock, Apple I-pad control, 5.1 surround sound
- Guest Cabins: 32" HD TV, Sat TV, Blu ray DVD, I-pod dock
- Sky Lounge: 85"HD TV, Sat TV, Blu Ray DVD, Apple TV and I-pod dock, Apple I-pad control, 5.1 surround sound
- VIP Cabin: 42"HD 3d TV, Sat TV, Blu Ray DVD, Apple TV and I-pod dock, Apple I-pad control, 5.1 surround sound
- Exterior: Marine in-ceiling speakers in all areas

## MAIN MACHINERY

- Fuel consumption:
  - 188 litres/hour @12kn
  - 370 litres/hour@ 14.5kn
- Gross Tons: 707
- Cruising speed: 12 knots
- Maximum speed: 14.5 knots
- Engine: 2x1100 bhp Caterpillar 35088 C-rating @1600 rpm
- Range: 5000nm@ 12 knots
- Fuel Consumption: 188 litres/hour @12kn, 370 litres/hour@ 14.5kn
- Generators: 2x148 ekW Caterpillar C9
- Quantum QC-1800 2 x 4 m2 fins, zero speed Stabilizers



wraparound seating forward on the sundeck offers ideal views

Just aft of the large upper saloon is a teak exterior dining table for 12



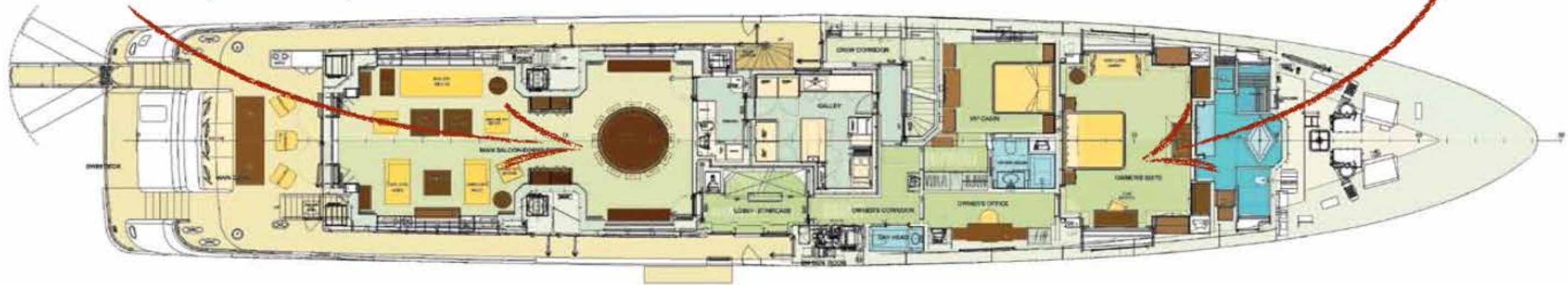
The crane and rescue tender are located in front of the wheelhouse

DISCLAIMER

While every effort has been made to ensure that the information contained within this presentation is as up-to-date and accurate as possible at the time of going to press, this cannot be guaranteed. All rights reserved. No part of this publication may be reproduced or used in any form without prior written permission.

The main saloon flows through to the formal dining area amidships, with galley and pantry adjacent

The owner's quarters offer a lounge area, desk and huge bathroom forward. The VIP suite is directly aft



most of the guest accommodation is grouped around the central staircase amidships

The crew quarters, laundry and mess are all tucked forward on the lower deck



**DISCLAIMER**

While every effort has been made to ensure that the information contained within this presentation is as up-to-date and accurate as possible at the time of going to press, this cannot be guaranteed. All rights reserved. No part of this publication may be reproduced or used in any form without prior written permission.