

KALIZMA FOR CHARTER







**BUILDER**

RAMAGE & FERGUSON,

LEITH

**BUILT**

1906

**REFIT**

2020

**LENGTH**

45.75m (150' 1")

**BEAM**

6.32m (20' 9")

**DRAFT**

3.60m (11' 10")

**GUESTS**

10 IN 5 CABINS  
40 AT THE QUAY

**CREW**

10



**GROSS TONS**

278

**ENGINES**

3 CUMMINS

(1 x 640 & 2 x 325 BHP)

**CRUISING SPEED**

10 KNOTS

**MAX SPEED**

12 KNOTS

**RANGE**

3,500 NM

**FUEL CONSUMPTION**

115 LITRES/HRS





**KALIZMA MAIN SALON**













**KALIZMA** MASTER SUITE





**KALIZMA** DOUBLE CABIN





**KALIZMA** DOUBLE CABIN





**KALIZMA** TWIN CABIN



**KALIZMA CAPTAIN**









**LENGTH**

45.75m (150' 1")

**BUILD**

1906 Ramage & Ferguson, Leith

**REFIT**

2020

**CRUISING SPEED/FUEL CONSUMPTION**

10 knots / 115 litres/hour

**CREW**

Captain + 9

**GUESTS & ACCOMMODATION**

10 (3 Double, 2 Twin)

**WATERSPORTS & RECREATION**

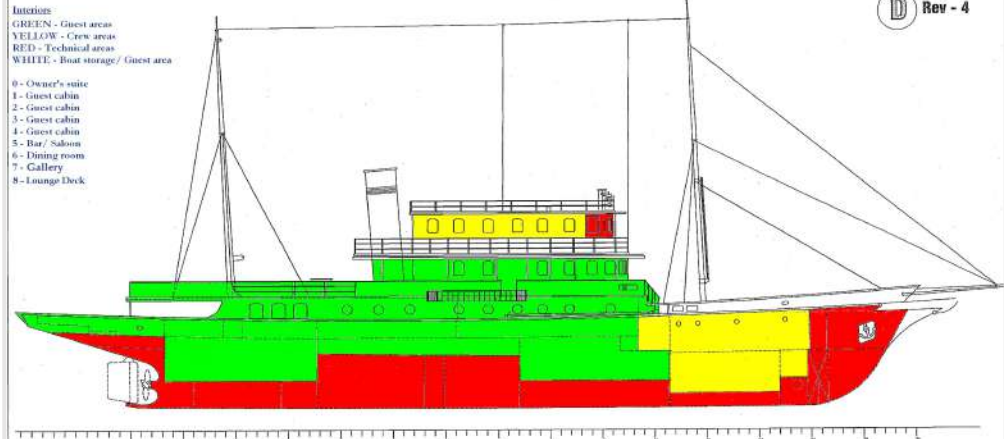
2 x Ribeye tenders (5.5 meters each), 2 x Yamaha wave runners / jet skis, 2 x water skis, 1 x sea bob, 1 x sofa ride (3 person), 6 x Snorkel & fins sets, 3 x dive gear sets.

**COMMUNICATIONS & ENTERTAINMENT**

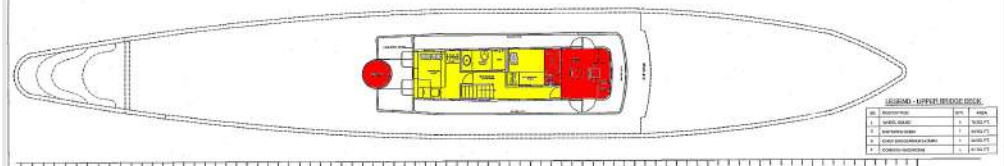
Flat Smart HD Televisions with Plex media, Netflix & Amazon.

SONOS Music system in interiors and Fusion music system in exteriors with Bluetooth & WIFI. GMDSS, Integrated Navigation System AIS, Purple Finder Security Alert.

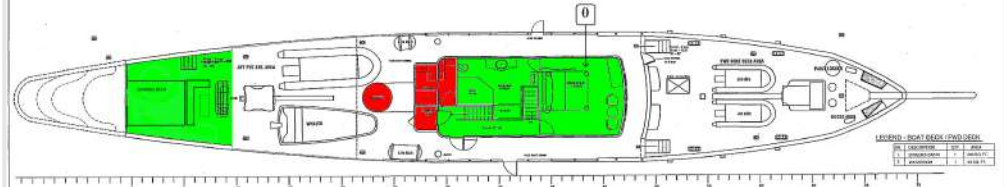
Interiors  
 GREEN - Guest areas  
 YELLOW - Crew areas  
 RED - Technical areas  
 WHITE - Boat storage/ Guest area  
 0 - Owner's suite  
 1 - Guest cabin  
 2 - Guest cabin  
 3 - Guest cabin  
 4 - Guest cabin  
 5 - Bar/ Salon  
 6 - Dining room  
 7 - Gallery  
 8 - Lounge Deck



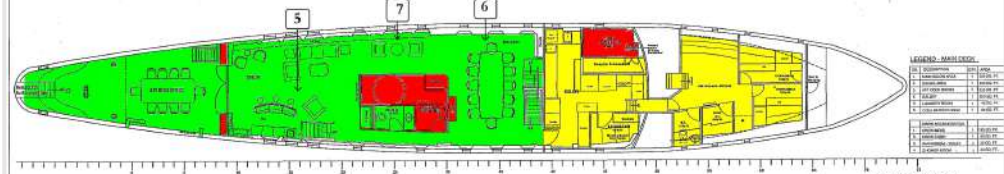
ELEVATION OF M/Y KALIZMA



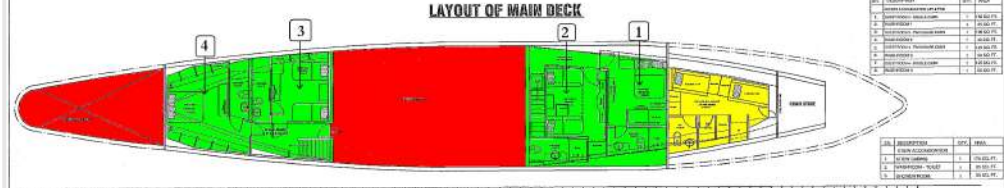
LAYOUT OF UPPER BRIDGE DECK



LAYOUT OF BOAT DECK/ FWD. DECK



LAYOUT OF MAIN DECK



LAYOUT OF BELOW MAIN DECK

PROFILE

UPPER BRIDGE DECK

FORWARD DECK

MAIN DECK

LOWER DECK



KALIZMA  
1906



## STYLE & CHARM OF A CLASSIC

In 1967, two of Hollywood's most famous actors, Richard Burton and Elizabeth Taylor, chartered her in the western Mediterranean. By the end of the cruise, the couple had fallen in love with the yacht. On purchase they named her KALIZMA after their three daughters KAtE, Liza and MAria.

KALIZMA was a haven away from the prying eyes of the media and the world. It was onboard KALIZMA that the famous 69 carat diamond, that Burton bought from Cartier, was delivered to Taylor for her to wear at Princess Grace's Scorpio Ball in Monaco.

## S/Y MINONA

Originally, S/Y MINONA was commissioned, at the height of the "Golden Age", as a luxury private yacht for a famed businessman and Vice Commodore of the Royal Eastern Yacht Club. Designed by G.L. Watson himself in 1904, and built in 1906 by the famous Scottish yacht builders Ramage and Ferguson, her design encompassed much of the elegance and luxuries of the time. In the years that followed, KALIZMA has been center stage at many international yacht races, including the America's Cup in 1983 where she was the host to Royalty.

## SURVIVED WORLD WARS

In WWI, the yacht served in the Auxiliary Patrol Fleet of the British Royal Navy from 1914 through to 1920. S/Y MINONA is documented as being armed and charged to the rescue of four steamers against a German U-Boat.

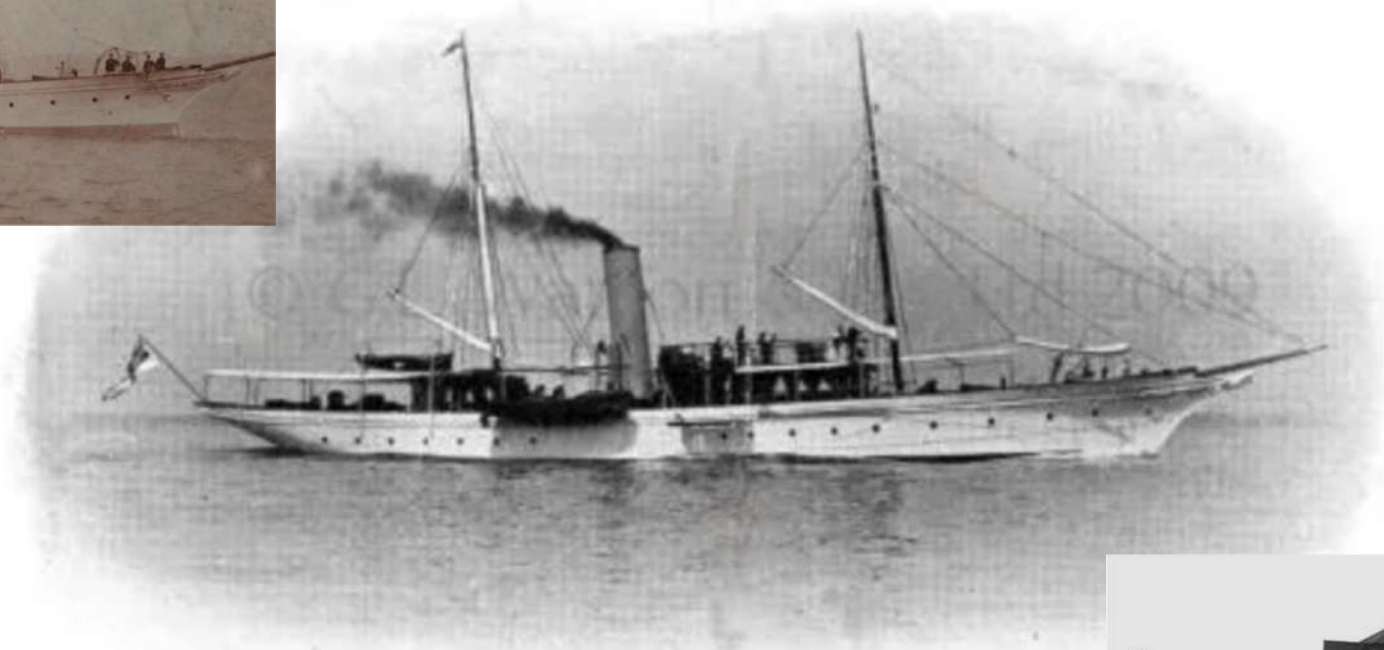
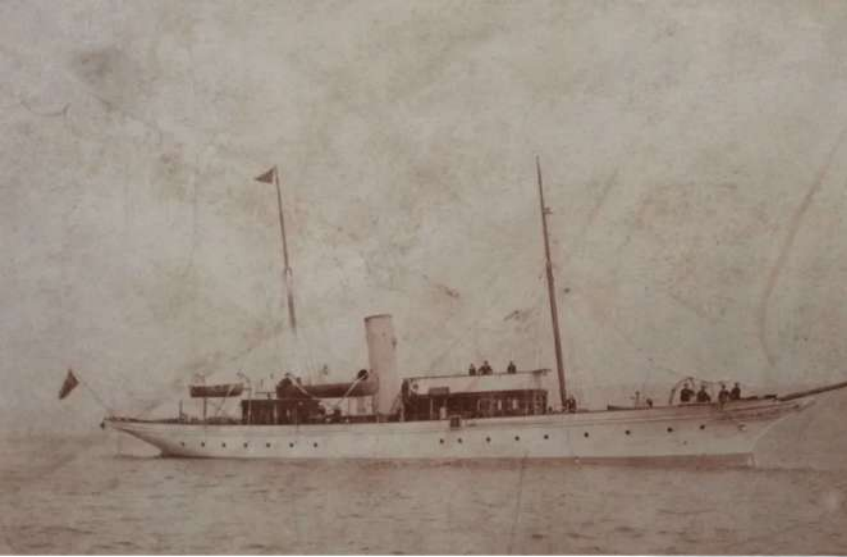
Between 1939 and 1945, the then called H.M.S. MINONA served in the British Royal Navy as a base ship for the Deep Sea Rescue Service in Campbelltown under the command of Lt. Commander R.D. Robinson, who even christened his daughter to the ships bells.

## THE RESTORATION

In 2019, she was acquired by an entrepreneur and businessman who in his earlier years experienced KALIZMA as a guest onboard, an experience which he wouldn't forget. He has had the pleasure and honor of ensuring that the legacy of KALIZMA lives on. She has been restored in a manner that ensures her soul is unaltered and her heritage resurfaced.

Today KALIZMA lives on as one of the Greatest Superyachts in Hollywood History and amongst the Top 100 Superyachts of Asia-Pacific, despite being 115 years old.

---



"MINONA."





