



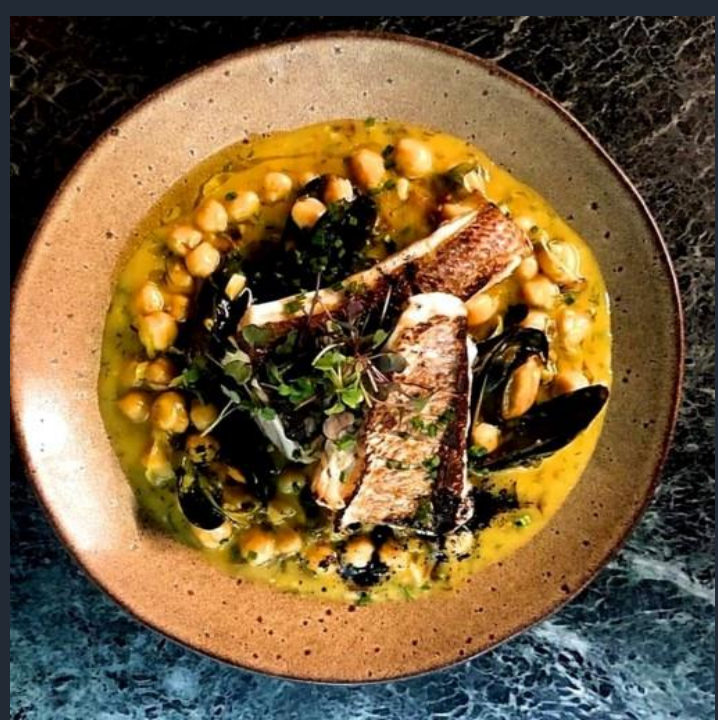
Builder: PICCHIOTTI L.o.a.: 30,00m Cabins: 4+1 Guests: 8/11 Crew: 6













RARMA

JOBEH JOBEH































SPECIFICATIONS

BUILDER: PICCHIOTTI

Built 1987 - last total refit 2019/ Hull paint and upgrades 2023

DIMENSIONS

L.O.A.: 30,00 m

BEAM: 7,00 m

DRAFT: 2.70 m

ACCOMMODATION 8- max.11 guests in 4+1 convertible cabins

One Master cabin, en-suite bathroom with tub

One VIP cabin, en-suite bathroom

Two Twin cabins (one equipped with an additional pullman berth), en-suite bathroom each

One playroom convertible into double or twin cabin , en-suite wc room

Separate crew quarters with separate access

ENGINES: 2 x 1300HP MTU

TOP SPEED: 16Knots - CRUISING SPEED: 14Knots

GENERATORS: 2 x 42kW G&M

ELECTRICITY: 220V AC, 50hz, 24V

Bow thruster: BCS electro/hydraulic

STABILIZERS underway

TENDER & WATER TOYS

Tender VIPBOAT 430 RIB, 4.60m, 50HP Mercury outboard engine

Jet Ski (on request, free of charge) Seadoo spark 900 ACE 2020 new

Waterskis

Banana

2 x Paddleboard

U-Tubes

Jobe Vanity Wakeboard

Yamaha 500Li Seacooter

Snorkeling & Fishing Gear

Chase Boat: REEL NAUTI - Salpa 12m 2012 (upon request)

