

LA FENICE

FOR CHARTER





L A F E N I C E

A masterpiece of engineering and design, 29m LA FENICE is more than just a yacht, she is a piece of yachting history. Designed by Laurent Giles Naval Architects and built by Richard Ironworks in 1962, she was originally commissioned by the financier Anthony Boyden as the support vessel for 12 metre Sovereign, his challenger for the 1964 America's Cup.

OVERVIEW

Based in the West Mediterranean, LA FENICE is available for classic weekly charters, day charters and static charters for events including the Monaco Grand Prix, the Cannes Film Festival, and the America's cup. With four cabins, LA FENICE can accommodate up to 9 guests onboard overnight and up to 35 guests for static events when in port.

In the mid-80s, LA FENICE was purchased by the French Navy and began a new career as a training vessel for the Customs and Border Force. She was then bought by the photographer Peter Lindbergh in 2001, before returning to the UK in 2020. Fully refitted and refurbished between 2021 and 2023, she is now making her debut on the global charter market.

LA FENICE

29.16M | RICHARD IRONWORKS | 1962/2023

 LENGTH 29.16m

 BEAM 6.56m

 NO. OF GUESTS 9

 DRAFT 2.80m

 GUEST CABINS 4

 RANGE 3360 nm

INTERIOR

An interior design by Christian Liaigre, who was involved from 2005 to 2016, with his main input in the 2015/2016 refit, reflects a perfect balance between modern aesthetics and traditional charm, pairing dark wood flooring and panelling with leather accents. The open-plan layout creates a sense of spaciousness and connects the different living spaces throughout the yacht's interior. LA FENICE's guest accommodation comprises three double staterooms plus a twin stateroom (a double bed and a pullman) for younger guests. Styled in a classic fashion, each stateroom exudes elegance and sophistication with a neutral colour palette plus rich wood finishes to add a touch of traditional charm to your charter experience.

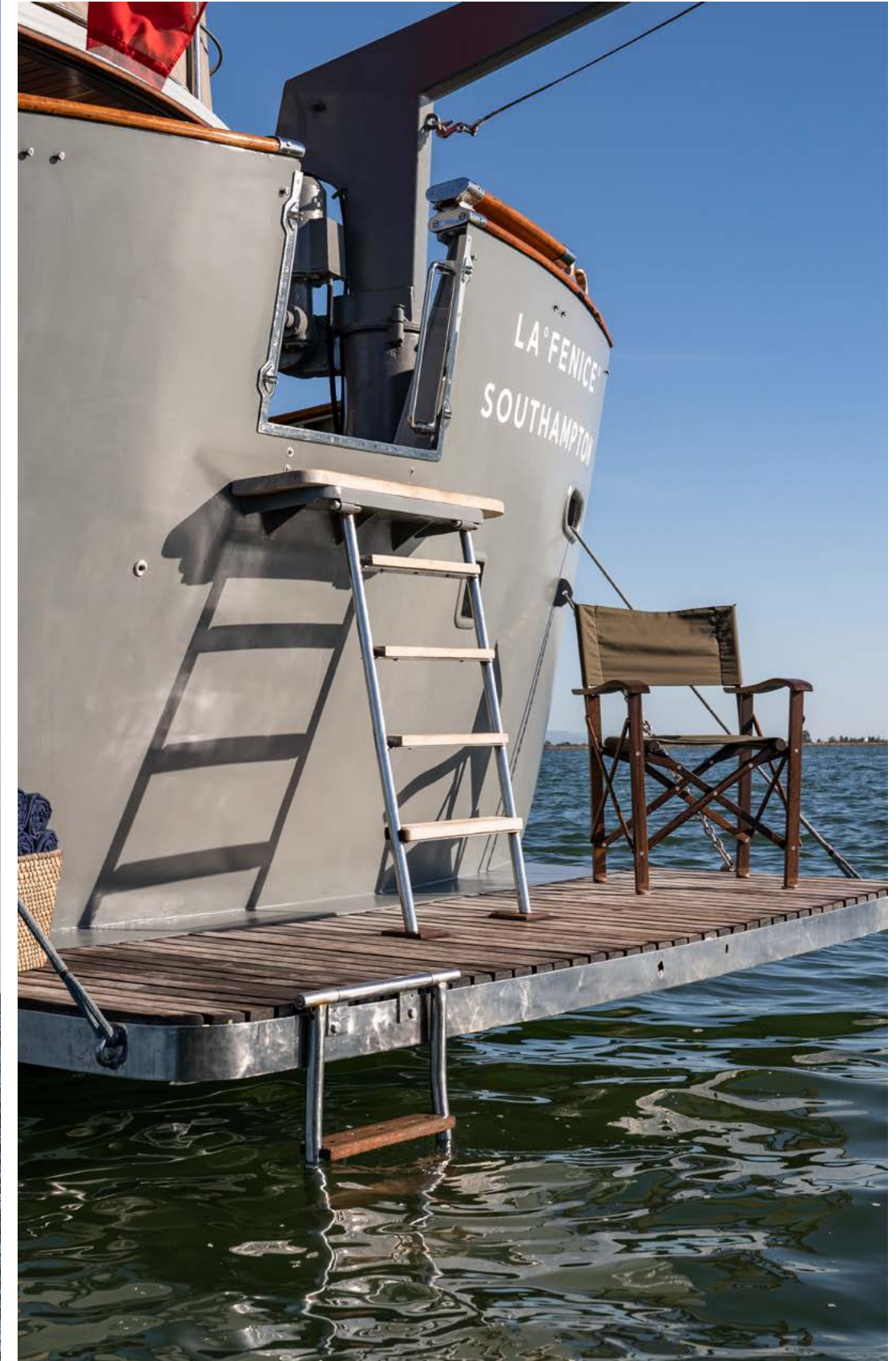
EXTERIOR

Offering charter guests ample space to relax and enjoy, LA FENICE's exterior living space is designed to provide the ultimate outdoor lifestyle. Her expansive decks offer a variety of options for relaxation and socialising with outdoor lounge and dining areas across the main and bridge decks.

Whether it's lounging in the sun, dining al fresco, or simply enjoying the sea breeze from LA FENICE's spacious deck areas, you and your guests will have plenty of room to unwind and make the most of your time on board as you create unforgettable memories set against the backdrop of the Mediterranean.



L A F E N I C E















































































T E N D E R & T O Y S

T E N D E R & T O Y S

1 x Axopar 37 chase boat

1 x Predator 550 Tender with a 115hp Yamaha engine

1 x RS500 sailing dinghy

2 x SUP

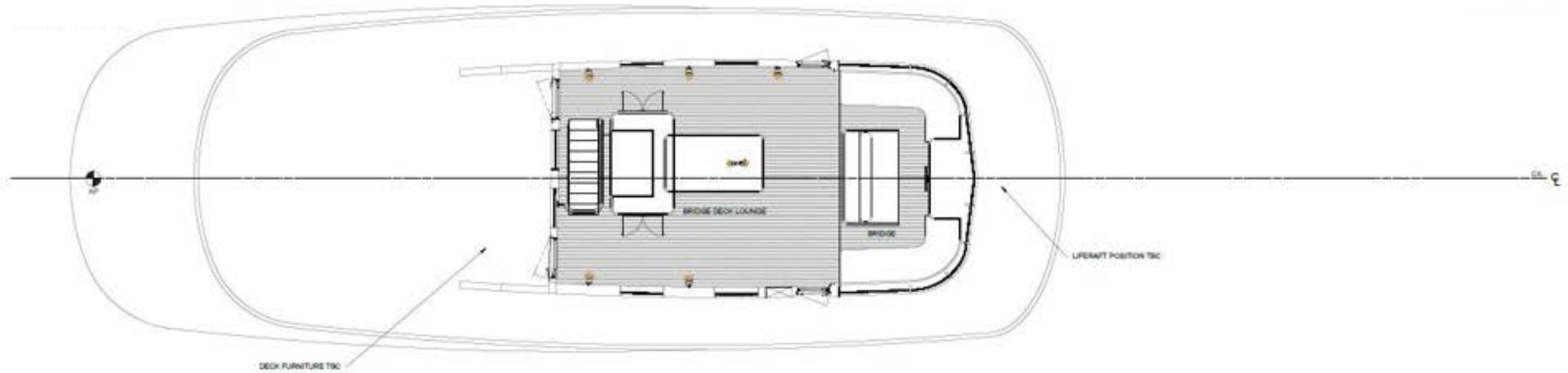
waterskis

wakeboards

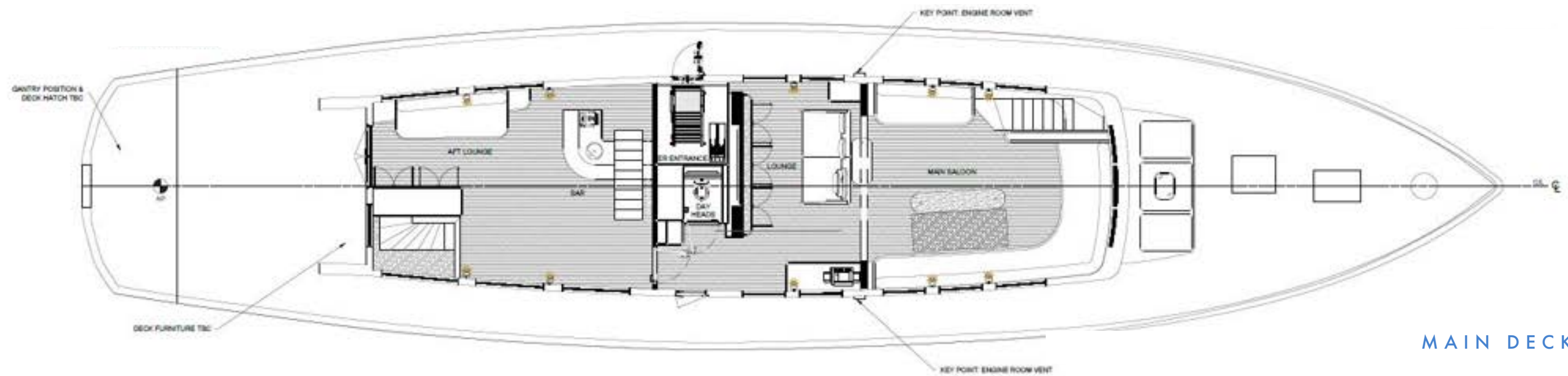
A full range of towable inflatables



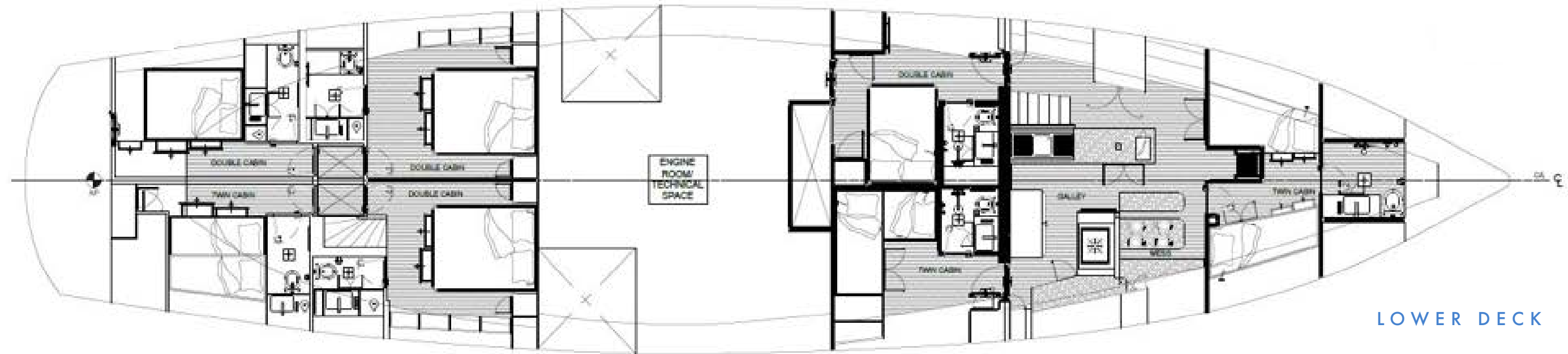
CHASE BOAT STOCK IMAGE: AXOPAR 37 AC



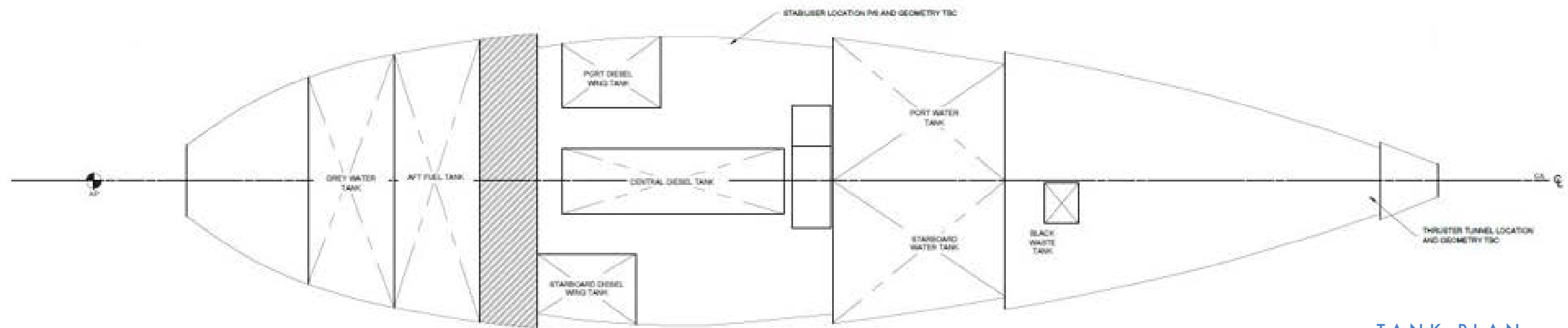
BRIDGE DECK



MAIN DECK



LOWER DECK



TANK PLAN

DISCLAIMER

While every effort has been made to ensure that the information contained within this presentation is as up-to-date and accurate as possible at the time of going to press, this cannot be guaranteed. All rights reserved. No part of this publication may be reproduced or used in any form without prior written permission.