

# LADY I



42.6m (140') | CRN Ancona | 2009/2022





















Main Salon



Main Salon



Main Salon - Dining



Main Salon - Dining



Main Salon - Dining



Main Salon - Dining



Upper Deck Salon





Upper Deck Salon



Upper Deck Salon



Upper Deck Salon



Massage Area



Master Stateroom - Private Office



Master Stateroom - Private Office



Master Stateroom



Master Stateroom





Master Stateroom



Master Stateroom - Private Balcony



Master Stateroom - Private Balcony



Master Stateroom - Private Balcony



Master Stateroom - En Suite





VIP Stateroom



VIP Stateroom





VIP Stateroom - En Suite



Twin Stateroom - Convertible into Double



Twin Stateroom - Convertible into Double



Twin Stateroom - Convertible into Double



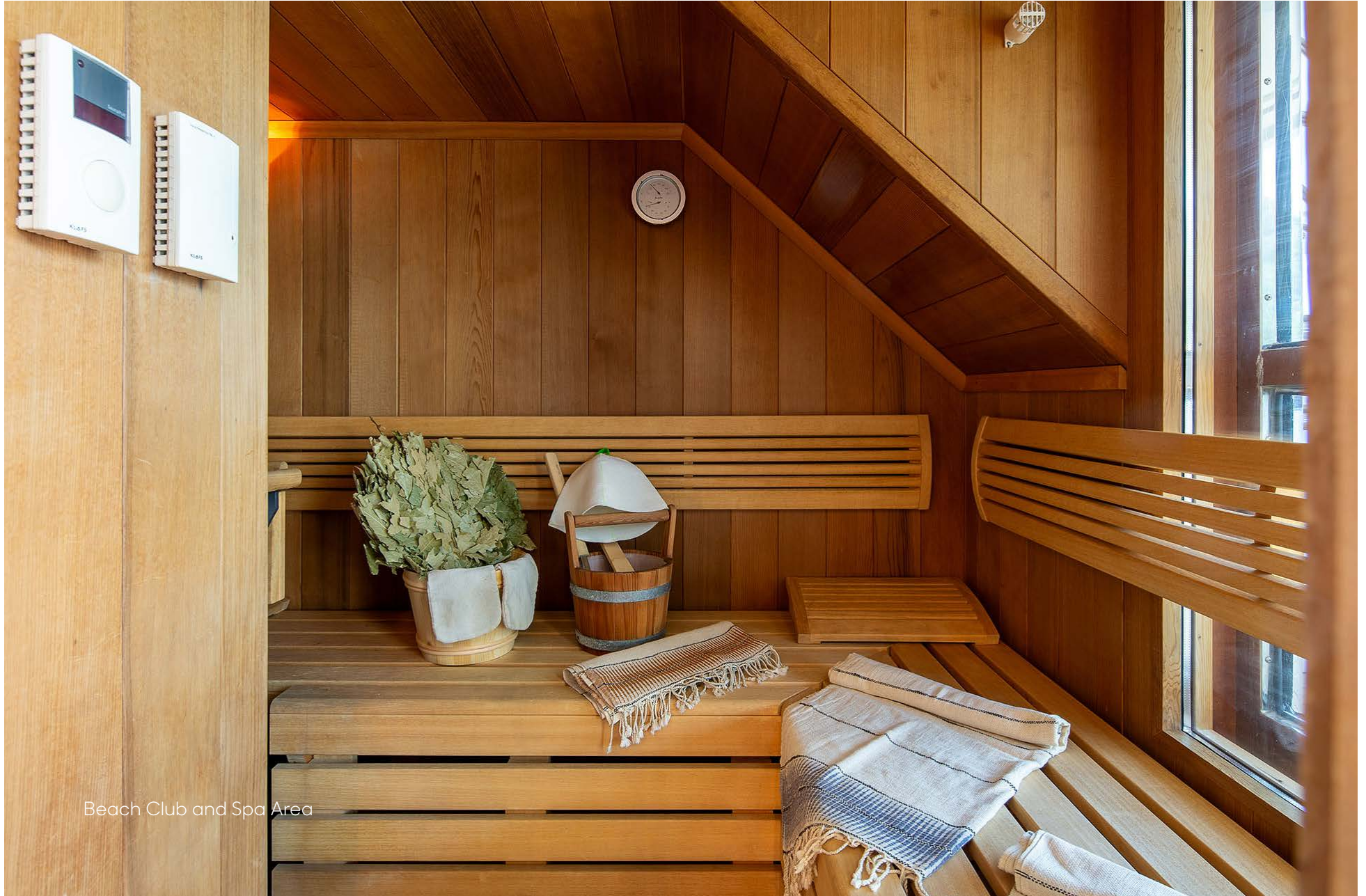
Twin Stateroom - En Suite



Beach Club and Spa Area



Beach Club and Spa Area



Beach Club and Spa Area





Bridge



Main Deck



Main Deck



Upper Deck



Upper Deck



Upper Deck



Upper Deck



Sun Deck





Sun Deck



Sun Deck



Sun Deck - Jacuzzi



Sun Deck - Jacuzzi



Tender



Water Toys







## SPECIFICATIONS

### DIMENSIONS

---

Length	42.6m (140")
Beam	8.65m (28' 5")
Draft	2.8m (9' 2")

### GENERAL

---

Year	2009/2022
Builder	CRN Ancona
Exterior Design	Zuccon International Project
Interior Design	Zuccon International Project
Hull Construction	Glass Reinforced Plastic
Superstructure	Glass Reinforced Plastic
Gross Tonnage	453

### ACCOMMODATION

---

Number of Cabins	5 (1 Master, 2 VIP, 2 Twin - can be converted to double)
Total Guests	10
Total Crew	9

### TECHNICAL INFORMATION

---

Engines	2 x Caterpillar C32 C Diesel - 1499hp x 2: 2998hp
Fuel Capacity	45,000 litres
Water Capacity	11,889 litres
Fuel Consumption	350 litres per hour
Range	4,000 nm
Maximum Speed	15.5 knots
Cruising Speed	13 knots
Stabilisers	At anchor and underway

### CERTIFICATIONS

---

Flag	Seychelles
Port of Registry	Port Victoria, Mahé
Class	RINA

### TENDER AND TOYS

---

- 10m San Marco tender / 2 x 300 hp / 12 pax
- 1 x Seadoo Waverunner RXP-X RS300 / 350 hp
- 2 x Seabob F5S
- 2 x Paddle boards
- 1 x Efoil
- Waterskis
- Snorkel gear
- Inflatables

### AMENITIES

---

- Jacuzzi (on deck)
- Spa / Sauna
- Air Conditioning
- WiFi

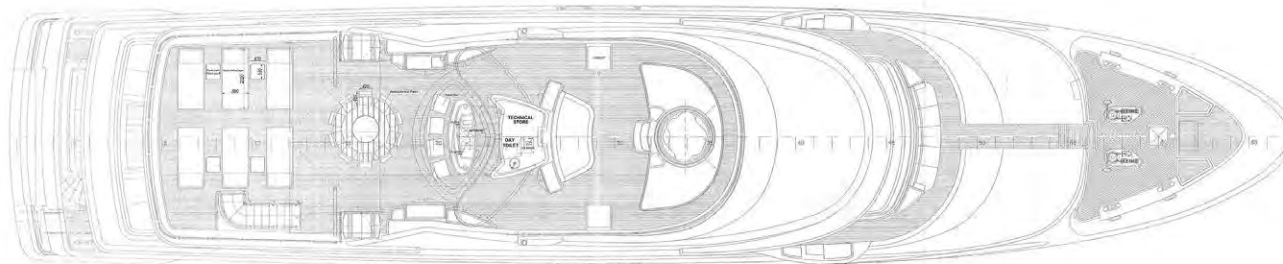
### WEEKLY CHARTER RATES - MYBA TERMS

---

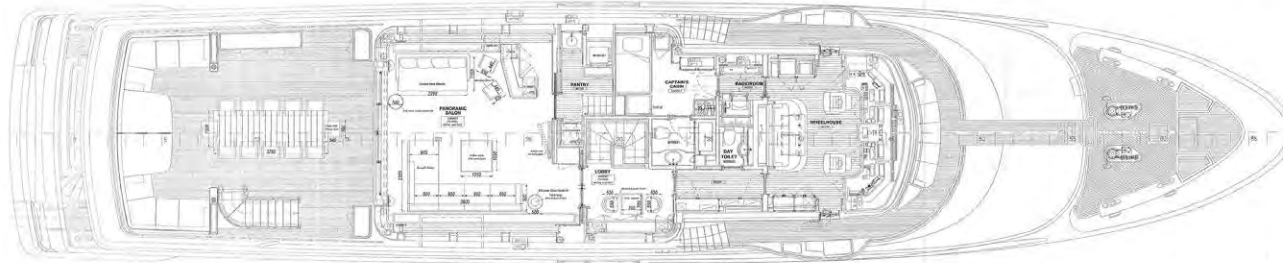
**€160,000 per week** - High Season

**€145,000 per week** - Low Season

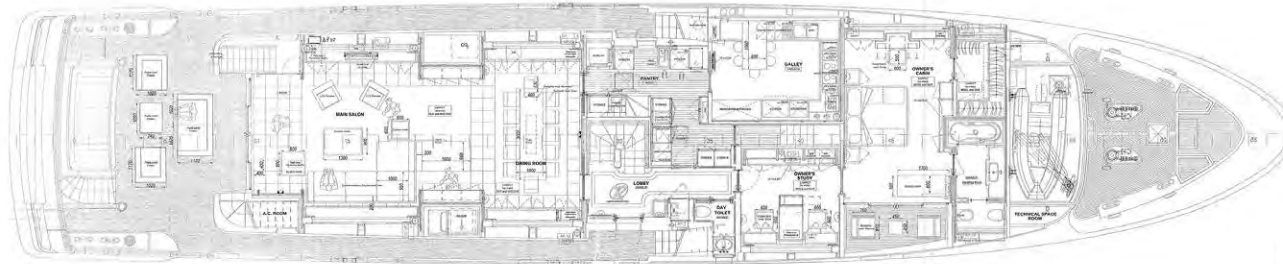
# GENERAL ARRANGEMENT



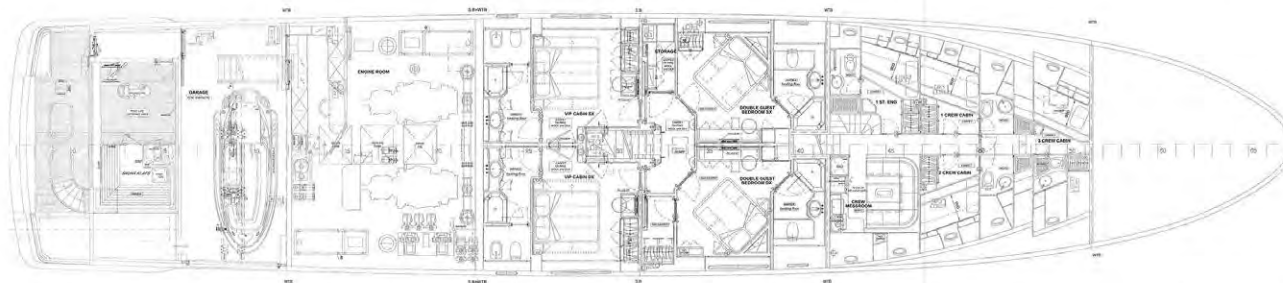
Sun Deck



Upper Deck



Main Deck



Lower Deck

