



LADY LARA

FOR CHARTER

SPECIFICATION

Builder
Lürssen

Built
2015

Length
91m (298'5")

Beam
14.4m (47'5)

Draft
4m (13'1)

Guests
12 in 8 cabins

Crew
27

Max. Speed
17 knots



LADY LARA

STAND OUT IN EVERY WAY

There are superyachts and then there's Lady Lara. Exceeding expectations on all levels, at 91m she offers every kind of luxury under the sun, literally. Her impressive volume is awe-inspiring. There's a dedicated spa area on the bridge deck, complete with treatment room, hammam, beauty salon and fully equipped gym. On the main deck there's a swimming pool. By day it's the perfect place to cool off and refresh, by night it can be transformed into a dancefloor while the bespoke music system takes care of the soundtrack. Opulent without being ostentatious, Lady Lara accommodates up to 12 guests in eight cabins.



LADY LARA



LADY LARA



EXTERIOR LIVING

SERIOUS ABOUT LEISURE

Just as on the inside, Lady Lara's decks provide a multitude of ways to spend your time. With not one but two pools, one on the sun deck with a swim-up bar and one on the main deck, guests will have every opportunity to stay refreshed. The main-deck pool transforms to become a dance floor by night, and a custom sound system completes the party set up which is ideal for celebrations or events.

The Owner's deck offers seamless indoor/outdoor dining with a glass enclosure creating a unique setting that becomes part of the interior space. The large private terrace is directly accessible from the Owner's suite and has a Jacuzzi and a large foredeck area, perfect for yoga.

There's relaxation on offer at the water's level too; the beach club is an additional area with sun loungers, seating and a sauna and steam room while tenders are launched from the other side.



EXTERIOR LIVING SUN DECK

LADY LARA



EXTERIOR LIVING SUN DECK

LADY LARA







EXTERIOR LIVING OWNER'S DECK

LADY LARA



EXTERIOR LIVING MAIN DECK AFT

LADY LARA



EXTERIOR LIVING MAIN DECK AFT

LADY LARA



EXTERIOR LIVING BEACH CLUB

LADY LARA

INTERIOR LIVING

SPACE & TIME

Light and fresh, the interior is expansive but welcoming. Large windows fill the spaces with natural light adding to the airy feeling on board. The variety of areas means there is space for everyone should guests wish to socialise together or spend time privately. Options abound. The Owner's deck features a lounge with a bar in addition to the Owner's private apartment while on the main deck, there is a large salon with a grand piano, a generous formal dining table and a spacious lounge area. Meanwhile on the bridge deck, there is a wellness area devoted to relaxation and pampering, featuring a beauty salon, a spa-treatment room, a massage room, a gym and a hammam. Guests also have a cinema at their disposal.























CABIN ARRANGEMENT

REST & RELAXATION

Lady Lara accommodates up to 12 guests in eight cabins. The Owner's deck consists of a large master suite that opens out onto a private terrace with a Jacuzzi, has his and hers bathrooms and dressing rooms and an adjacent Owner's library. Six of the remaining cabins are situated on the main deck, two of which have fold-out balconies, and a final guest cabin is found on the lower deck. All cabins have ensuite bathrooms.



CABIN ARRANGEMENT OWNER'S SUITE

LADY LARA



CABIN ARRANGEMENT OWNER'S SUITE

LADY LARA



CABIN ARRANGEMENT VIP SUITE

LADY LARA



CABIN ARRANGEMENT GUEST CABINS

LADY LARA



TENDERS & TOYS

INFINITE FUN

If Lady Lara's amenities are next level then why should the toy collection be any different? With something for everyone the selection of toys spans leisurely discovery to the all-out thrills. There are Seabobs, jetsurfs, inflatables, SUPs and more to keep guests of all ages occupied for hours while the tenders include a luxurious limousine tender to ferry guests ashore in comfort and style.



LADY LARA



TENDERS & TOYS

LADY LARA



TENDERS & TOYS

WHAT'S IN THE TOYBOX

- 1x 11.6m Custom Compass Tenders Limousine with 2x 370hp (A/C and entertainment system)
- 1x 9.0m Custom Compass Tenders Sports boat with 2x 260hp (bow landing capability, twin screw, leg drive)
- 1x 6.2m XTENDER SOLAS Jet Rescue Boat with 180hp
- 2x Seadoo GTX LTD 300hp Jet Skis (also RYA PWC School on board)
- 2x F7 Cayago Seabobs
- 2x inflatable SUPs
- 1 x Lift E-foil
- 1x 2 person Inflatable Kayak
- 5x Dive Sets (Rendezvous only)
- 1x Aquaglide Airport Lounger
- 1 x Aquaglide Trampoline
- 1 x Aquaglide Jungle Joe
- Assorted towable inflatable toys including: 2 pax donut, 3 pax couch
- Assorted towable equipment: Wakeboards, Waterskis/ Mono Skis, Wakeskate, Wakesurf
- Snorkelling equipment: masks and fins for all sizes
- Fishing gear: game rods and reels, jigs/lures





LADY LARA

YACHT LAYOUT

SUN DECK

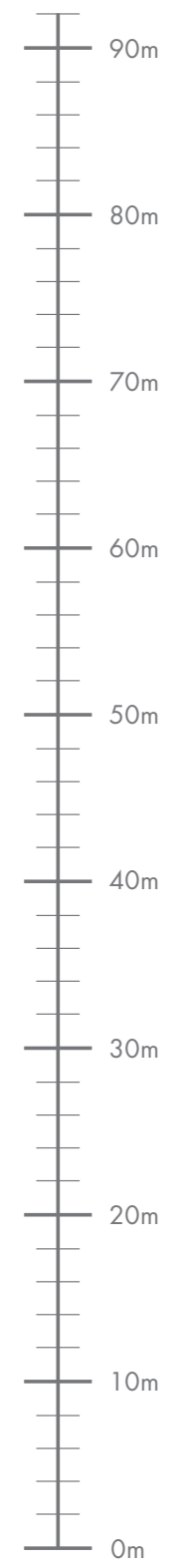
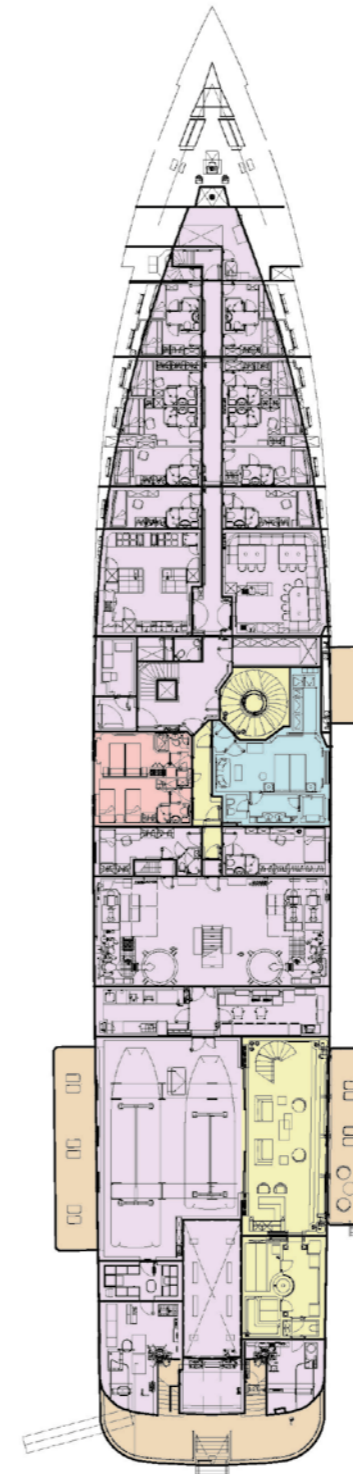
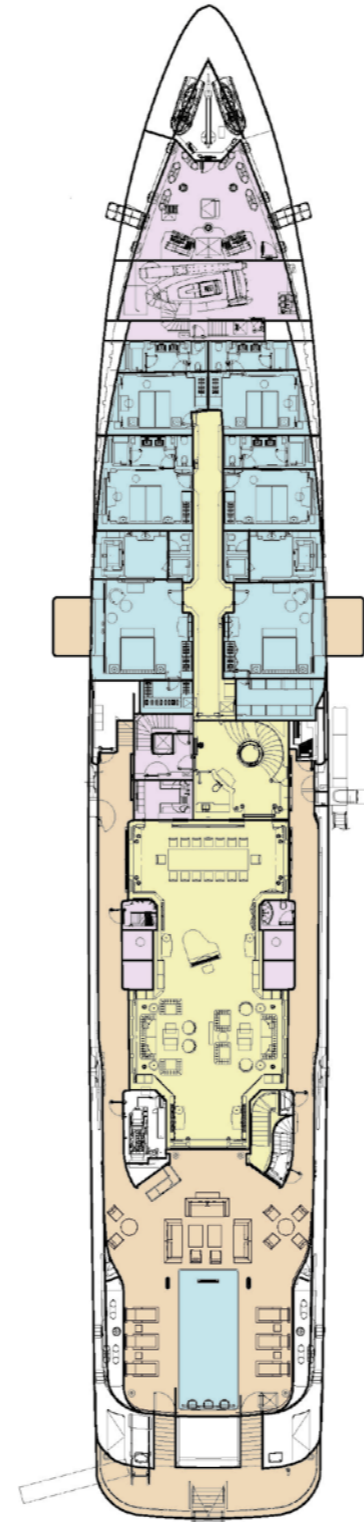
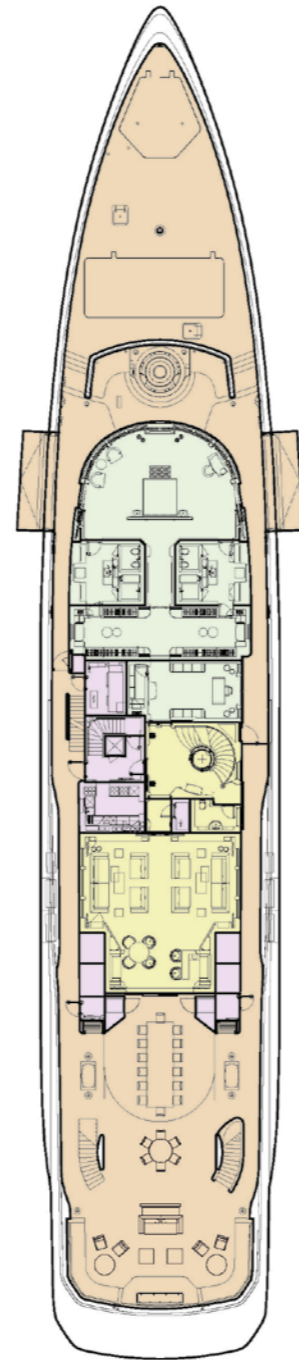
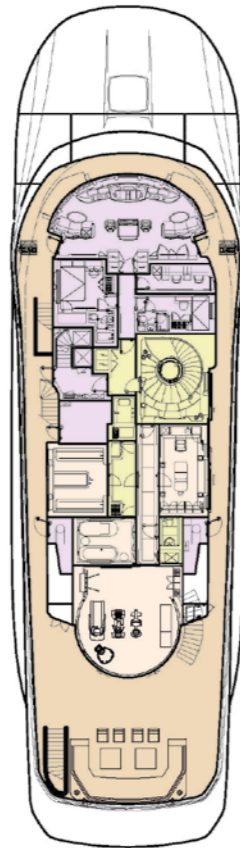
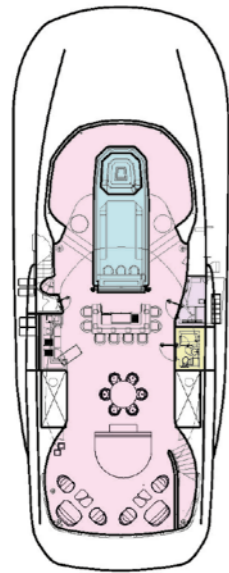
BRIDGE DECK

UPPER DECK

MAIN DECK

LOWER DECK

TANK DECK



KEY

- Deck
- Guest Areas
- Master Cabin
- Guest Cabins
- Staff Cabins
- Fitness & Wellbeing
- Sun Deck
- Crew Areas



LADY LARA

FOR CHARTER