

# LIONESS V

---

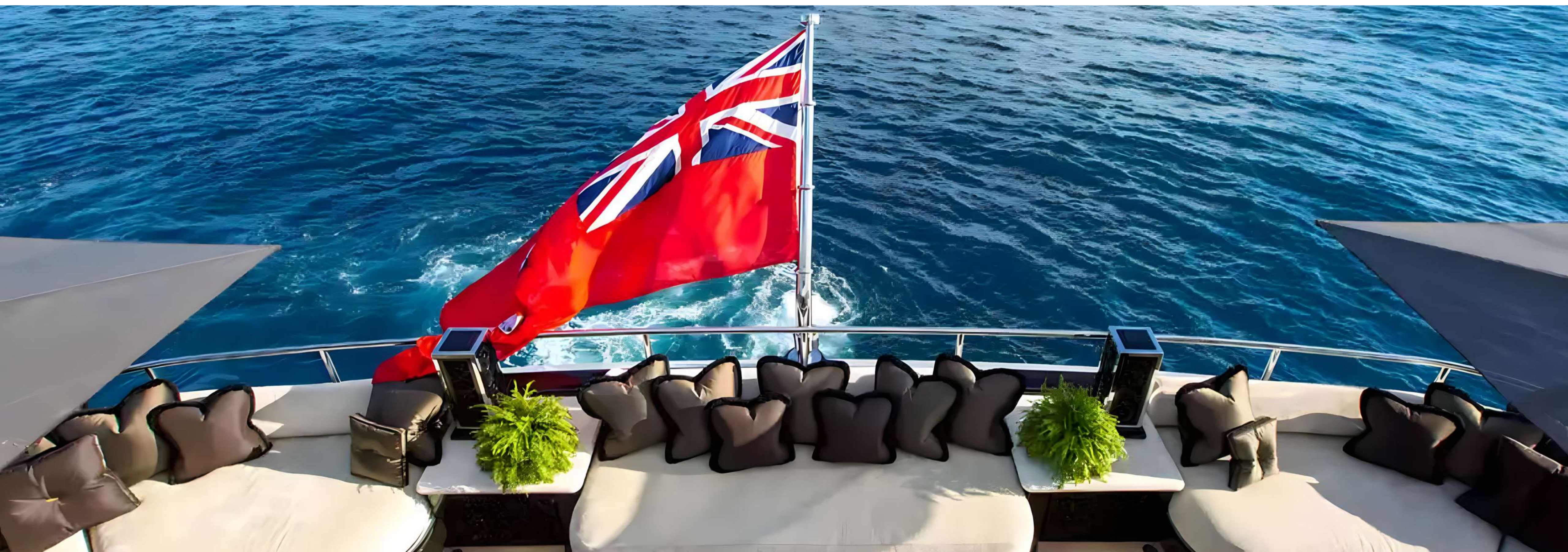
63.50M (208' 4") | BENETTI | 2006/2018



# MAJESTY AND ELEGANCE

---

Fashioned in 2006 by the esteemed Italian shipyard Benetti, LIONESS V boasts exceptional entertainment and leisure features. These include a cinema, jacuzzi, media room, bars, golf machine, and various water toys, rendering it the ultimate yacht for socialising and leisurely enjoyment.





SUN DECK



SUN DECK



SUN DECK

# WELCOME ONBOARD

---

Stefano Natucci's creative vision for the space's exterior was genuinely remarkable. One of the standout features he conceived was an elevated pool area, elegantly embellished with majestic stone steps that exude opulence. These steps lead to an inviting and luxurious oasis where guests can bask in the sun's warmth on lavish sun pads, creating a haven of relaxation. Furthermore, this outdoor haven is thoughtfully designed to include a fully equipped bar, offering a delightful setting for captivating evening cocktails under the starlit sky.



SUN DECK



SUN DECK



SUN DECK





SUN DECK



SUN DECK



SUN DECK



UPPER DECK



UPPER DECK



MAIN DECK



# INTERIORS

---

The main deck welcomes you with a luxurious lounge and a complete bar. Connecting to the main salon, it provides ample seating, while a formal dining section entices guests to relish their charter to the fullest. The interior exudes timeless elegance, adorned with exquisite furnishings and lavish seating for a comfortable ambiance. This grand superyacht doesn't stop there—it indulges you with a cinema, a cutting-edge media room, a gym, and a steam room, all equipped with the latest audio-visual technology for your enjoyment.



MAIN SALON





MAIN SALON



MAIN SALON



DINING AREA









UPPER SALON



UPPER SALON





UPPER SALON



# ACCOMMODATION

---

Lioness V presents lavish guest lodging, catering to a maximum of 12 visitors across 6 elegantly designed suites. These encompass a master suite situated on the main deck, accompanied by 3 double cabins and 2 twin cabins. The remarkably expansive master suite, spanning the entire yacht's width, boasts its study area and is complemented by separate his and her bathrooms. The total bed count is 8, comprising 1 king, 3 queens, and 4 singles. Thanks to a dedicated crew of nineteen professionals onboard, an exceptional level of service is assured, attending to your every requirement.





MASTER STATEROOM



MASTER BATHROOM



MASTER BATHROOM



MASTER BATHROOM



VIP STATEROOM



# LIFESTYLE

---

In addition to its cutting-edge design and technology, LIONESS V extends a generous invitation to guests with a roomy swimming platform conveniently accessible from the main deck. The yacht boasts a fully outfitted gymnasium and a rejuvenating hammam. Sun worshippers can luxuriate in the sundeck swimming pool, while entertainment seekers can relish a state-of-the-art cinema and media room. Golf aficionados are also in for a treat, with a Tee-it golf machine thoughtfully positioned on the sundeck aft.





HAMMAM

# FEATURED HIGHLIGHTS

---

- VAST DECK SPACES FEATURING SEVERAL DINING OPTIONS, SELECTION OF BARS AND SUNBATHING AREAS
- ELEVATED POOL WITH IMPOSING STONE STEPS AND PLENTY OF LAVISH SEATING/LOUNGING POSSIBILITIES AROUND
- SLEEPS 12 IN 6 LAVISH STATEROOMS ALL ENSUITE WITH FULL BATHROOMS
- FULL BEAM MASTER STATEROOM ON MAIN DECK WITH WALK THROUGH ENSUITE WITH “HIS AND HER” ACCESS
- EXTRA ENTERTAINMENT AREAS INCLUDE A LAVISH CINEMA ROOM, EQUIPPED GYM, HAMMAM, STATE-OF-ART MEDIA ROOM AND A STUDY
- DRAMATIC STAIRCASE TRAVERSING ALL DECKS
- EXTENSIVE SELECTION OF WATER TOYS WITH LARGE SWIM PLATFORM
- 2022 – FULL AV/IT UPGRADE INCLUDING ALL NEW LED LIGHTING

# SPECIFICATIONS

---

CATEGORY:	MOTOR YACHT
LOA:	63.50M (208' 3")
BEAM:	12M (39' 4")
DRAFT:	3.10M (10' 2")
BUILDER:	BENETTI
EXTERIOR DESIGNER:	STEFANO NATUCCI
INTERIOR DESIGNER:	ARGENT DESIGN
MODEL:	CUSTOM
BUILD YEAR:	2006
REFIT YEAR:	2018
SUPERSTRUCTURE:	ALUMINIUM
HULL MATERIAL:	STEEL
HULL CONFIGURATION:	DISPLACEMENT
DECK MATERIAL:	TEAK
NUMBER OF DECKS:	4
GRT:	1389
FLAG:	MARSHALL ISLANDS

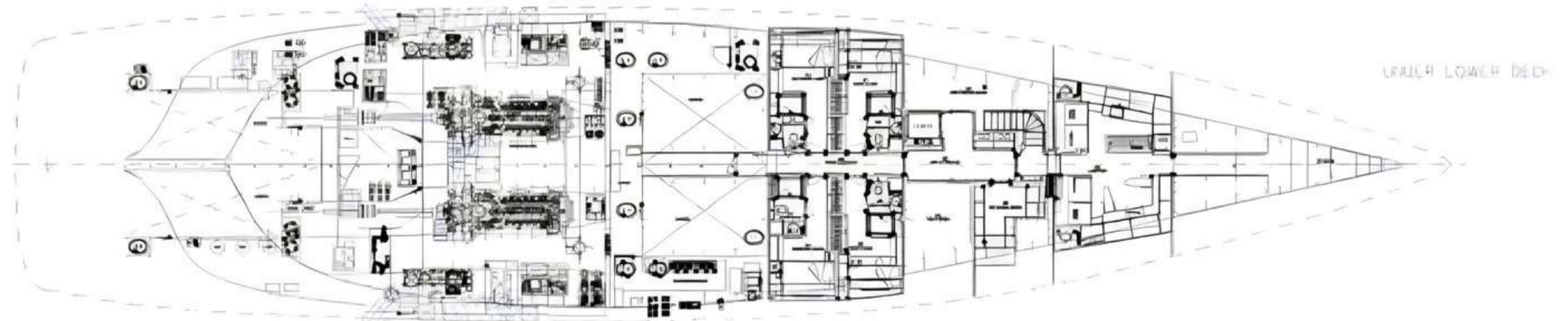
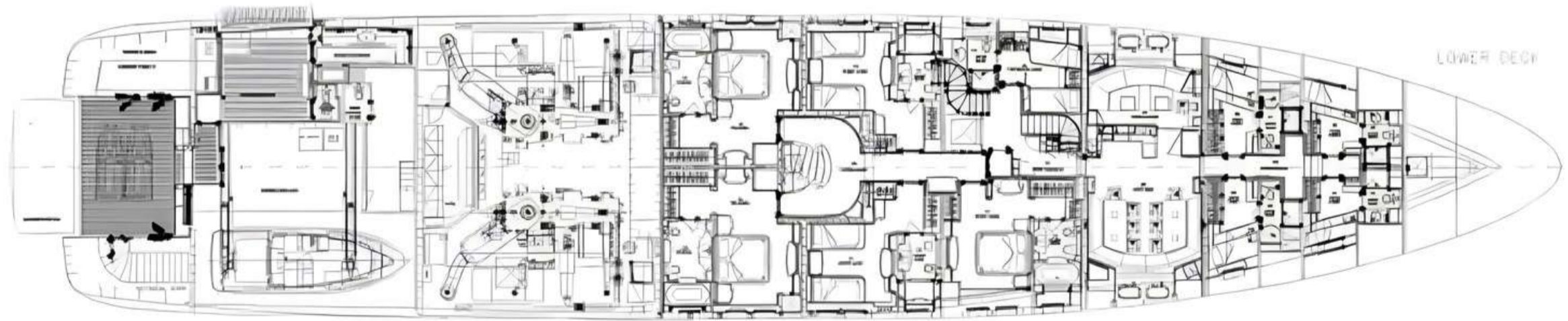
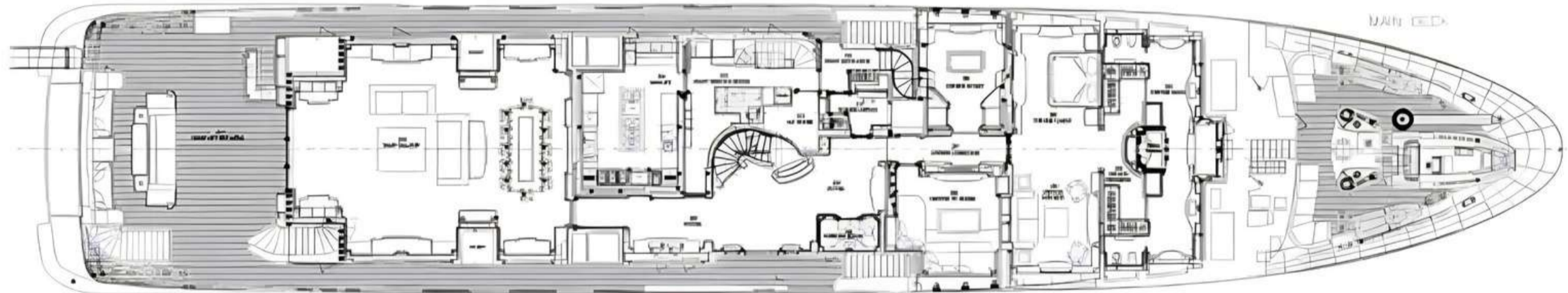
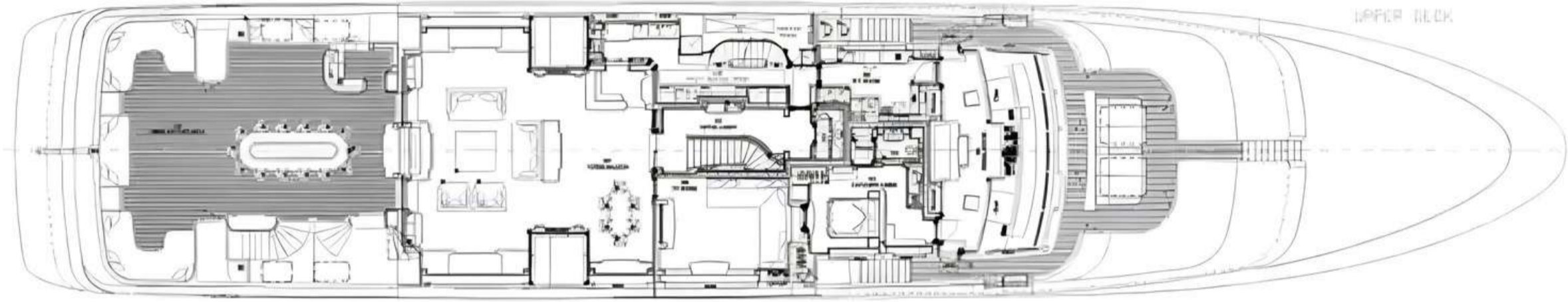
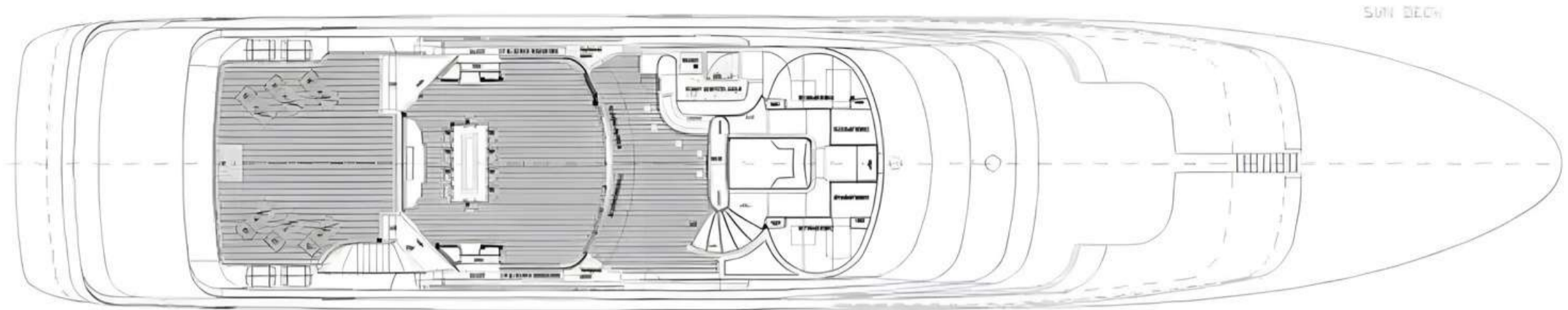
---

GUESTS SLEEPING:	12
GUEST CABINS:	6
GUEST CABIN CONFIGURATION:	1 MASTER, 3 DOUBLE, 2 TWIN CABINS
BED CONFIGURATION:	1 KING, 3 QUEEN, 4 SINGLES
CREW:	18

---

CRUISING SPEED:	14 KNOTS
MAXIMUM SPEED:	15 KNOTS
ENGINES:	2 X CATERPILLAR 2258 HP





# GENERAL ARRANGEMENT

