

M.Y MARAYA



M.Y MARAYA



MY Maraya offers over 450m² of external space with 5 separate deck areas to relax and unwind or entertain.

M.Y MARAYA



An additional feature is the Master state room balcony, which can be lowered whilst at anchor to provide a completely private external relaxation area for the principle guests.

M.Y MARAYA



relax ...

M.Y MARAYA



Main Deck

unwind ...

M.Y MARAYA



entertain ...

M.Y MARAYA



Main Saloon

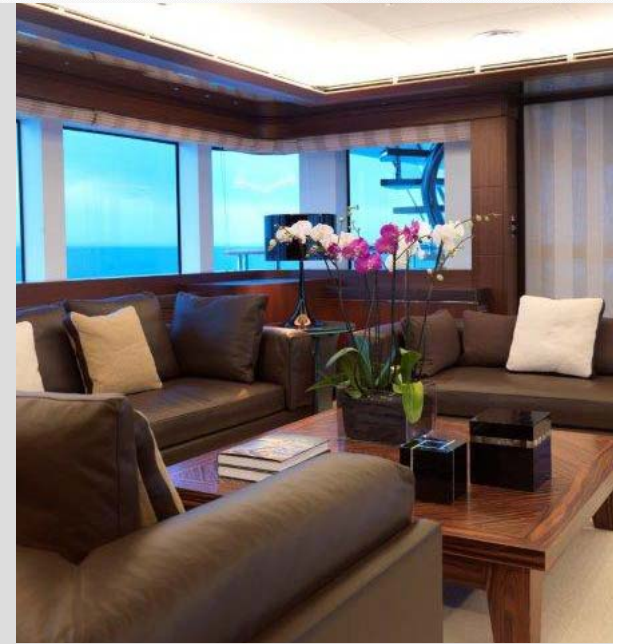
Maraya's contemporary styling presents guests with an elegantly designed interior combined with exquisite materials and countless refined finishing touches.

M.Y MARAYA



Main deck dining area.

M.Y MARAYA



Sky Lounge

M.Y MARAYA



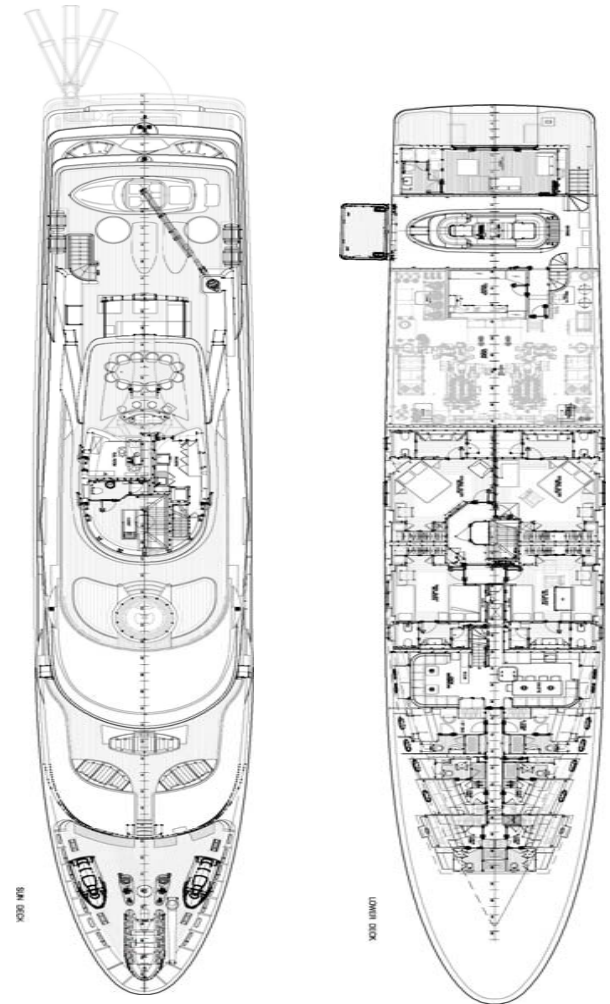
Maraya offers 4 double cabins; 2 with Emperor size beds and 2 with King size beds along with 2 twin cabins with Pullman berths.

M.Y MARAYA



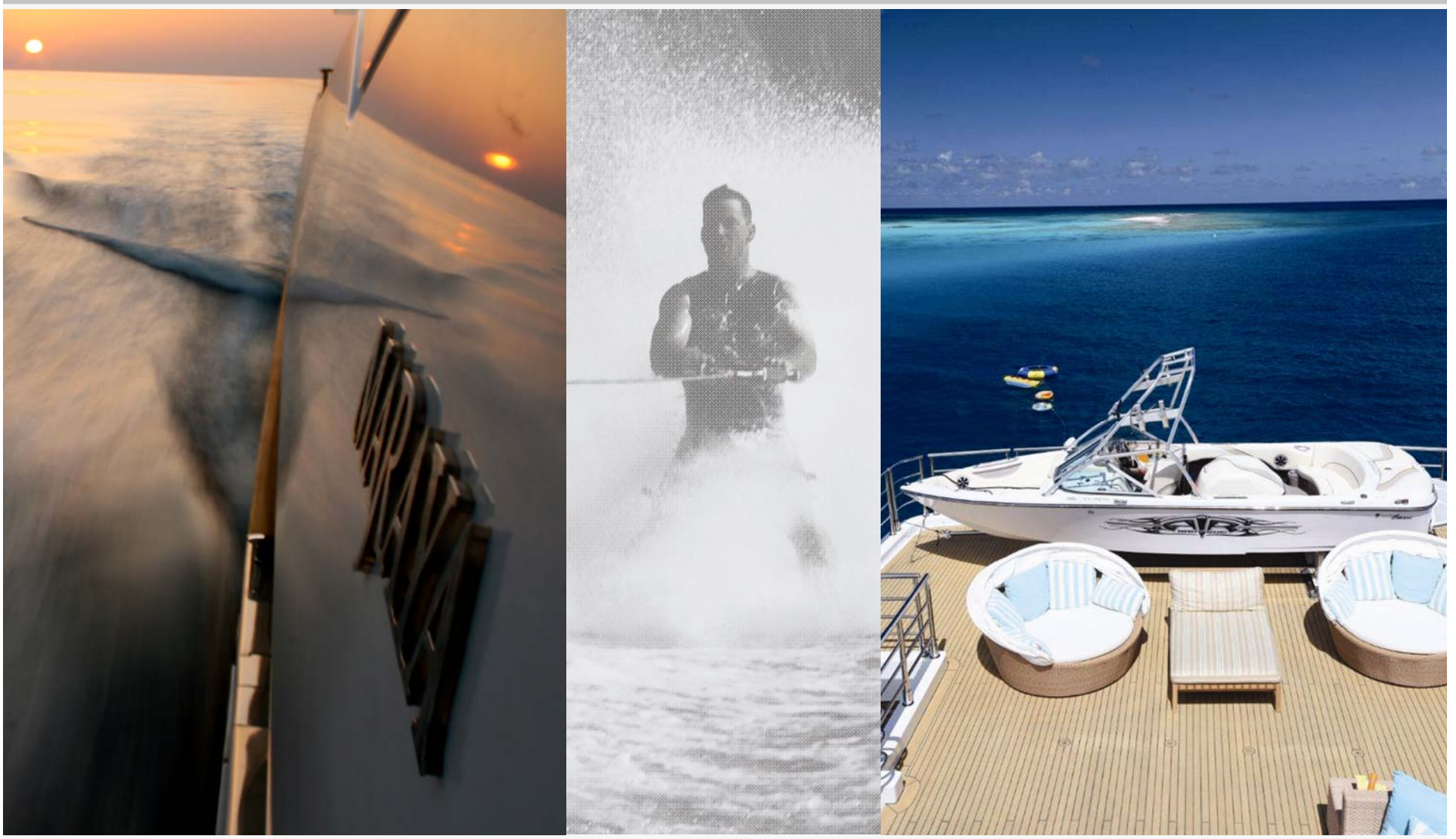
Master cabin with emperor size bed, study and private balcony.

M.Y MARAYA



MY Maraya offers an abundance of both internal and external space, each area with its own on-demand entertainments. Guests can escape, relax and fully enjoy their freedom onboard with all the rich, luxurious comforts and exceptional service expected from a charter vessel.

M.Y MARAYA



There is also a great selection of toys ranging from a professional ski/wake boat to a pair of radio controlled racing yachts.

M.Y MARAYA

SPECIFICATIONS

Length	54.20m/177'9"
Beam	10.20m/33'5"
Draft	3.50m/11'5"
Year Built	2008
Builder	CRN Ancona
Interior Designer	Claude Missir
Max Speed	16.5 knots
Cruising Speed	14 knots

ACCOMMODATION

4 Double, 2 Twin both with Pulman Berths	
Guests	12
Crew	15

TENDERS & TOYS

7.5m Castoldi Jet
7.5m Crossover Nautique 216
4.5m Zodiac MCA Rescue Craft
2 x Yamaha FX Cruiser HO
2 Laser Dinghies
2 Kayaks
2 Radio Controlled Laser Dinghies
Water Skis
Wake Board
Double ring
Banana & Sea Sled
Snorkeling & Diving Gear
Windsurf & Surf Equipment

