



MARY-JEAN II

FOR CHARTER

SPECIFICATIONS

Length	/	61.7m / 202.4 ft
Beam	/	12.0m / 39.4 ft
Draft	/	3.7m / 12.0 ft
Builder	/	ISA YACHTS
Year	/	2010
Guests	/	12 in 7 cabins
Crew	/	15
Max Speed	/	17 knots
Cruising Speed	/	14 knots



AWARD WINNING DESIGN

Mark Berryman has delivered a clean, contemporary design with classic undertones and textures. Mary-Jean II is the epitome of indulgence with striking and carefully considered finishes. She has been designed and crafted with ultimate precision, where thoughtful design meets casual elegance.

The neutral tones are the perfect backdrop for the extensive pop-art collection which is the unique feature throughout the interior.









Mary-Jean II

DOUGLAS

Mary-Jean II

DOUGLAS





INTERIOR

Space, comfort, formal, informal, Mary-Jean II delivers on all occasions. Dining for 14 combined with a spacious saloon on the main deck is complemented by the generous and versatile upper saloon arrangement.

The lower deck features a gym with a plethora of equipment for an onboard workout, Pelaton Plus exercise bike, rowing machine, TechnoGym adjustable weights, skipping ropes, yoga mats and exercise ball.

All equipment is movable which allows the gym space to double as a massage / treatment room.





INTERIOR / MAIN SALOON

MARY-JEAN II



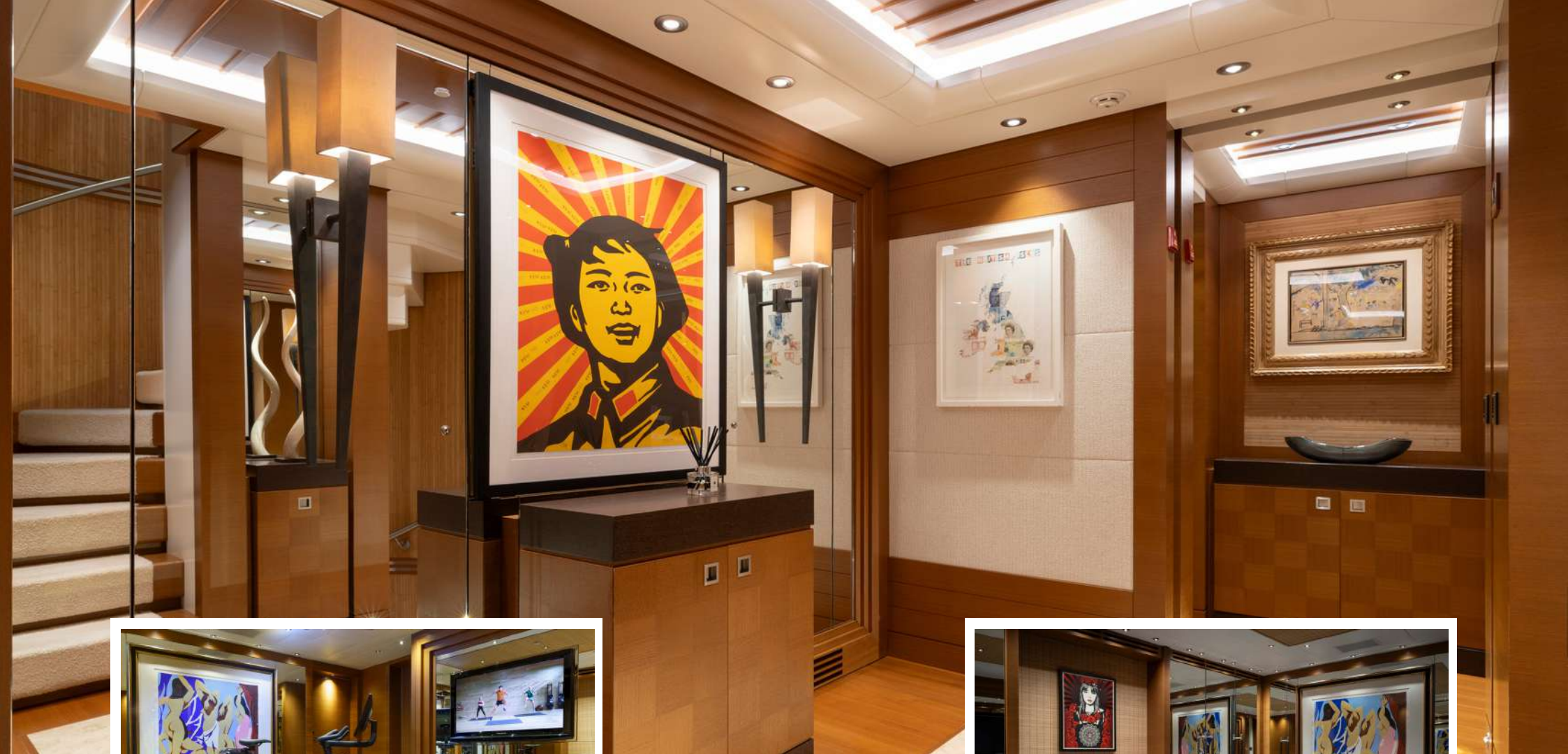
INTERIOR / DINING AREA

MARY-JEAN II



INTERIOR / DINING AREA

MARY-JEAN II



INTERIOR / GYM & MASSAGE ROOM

MARY-JEAN II



INTERIOR / UPPER SALOON

MARY-JEAN II



INTERIOR / UPPER SALOON

MARY-JEAN II



INTERIOR / BRIDGE

MARY-JEAN II

THE CABINS

Mary-Jean II offers expansive accommodation for 12 guests set across seven suites, including a spacious full beam Owner's suite and a double cabin on the main deck, a VIP Suite on the upper deck and a further four suites located on the lower deck, two of which can either be set up as singles or doubles as preferred.





INTERIOR / MASTER CABIN / MAIN DECK

MARY-JEAN II



INTERIOR / MASTER CABIN / MAIN DECK

MARY-JEAN II



INTERIOR / MASTER CABIN / MAIN DECK

MARY-JEAN II



INTERIOR / VIP CABIN / UPPER DECK

MARY-JEAN II



INTERIOR / VIP CABIN / UPPER DECK

MARY-JEAN II



INTERIOR / GUEST CABIN / LOWER DECK

MARY-JEAN II



INTERIOR / GUEST CABIN / LOWER DECK

MARY-JEAN II



EXTERIOR

Set across three decks, main, upper and sun deck, there is ample space for guests to relax and enjoy their time aboard.

Main deck greets guests with spacious seating, Upper deck hosts the primary covered dining area and the full-length sundeck has all of the ingredients for an award-winning Yacht. The Jacuzzi offers the best views up forward and a covered dining area for 12 allows all-day / all-weather enjoyment. The aft sunbeds, deckchairs and a lounge area gives guests the best opportunity to enjoy the sun, or recline in the shade as preferred.

With the added bonus of a fully equipped bar on every level, these decks are excellent for entertaining and perfect for special events.



EXTERIOR / SUN DECK

MARY-JEAN II



EXTERIOR / UPPER DECK

MARY-JEAN II



EXTERIOR / MAIN DECK

MARY-JEAN II

TOYS & TENDERS

Two Novurania Chase Tenders provide the guests with the versatility to enjoy water sports or coming to and from the Yacht in comfort and safety.

- / 2 x 22' Novurania Tender Chase 23
- / 2 x Yamaha FX1100 Jet Skis
- / 2 x F1 Sea Bobs
- / 2 x Inflatable Kayaks
- / 4 x Inflatable Paddle Boards
- / Snorkelling Equipment
- / Dive Gear
- / 2 x Wakeboards
- / 3 x Waterski Sets
- / 1 x Flite Board E-Foil
- / Towable Inflatables







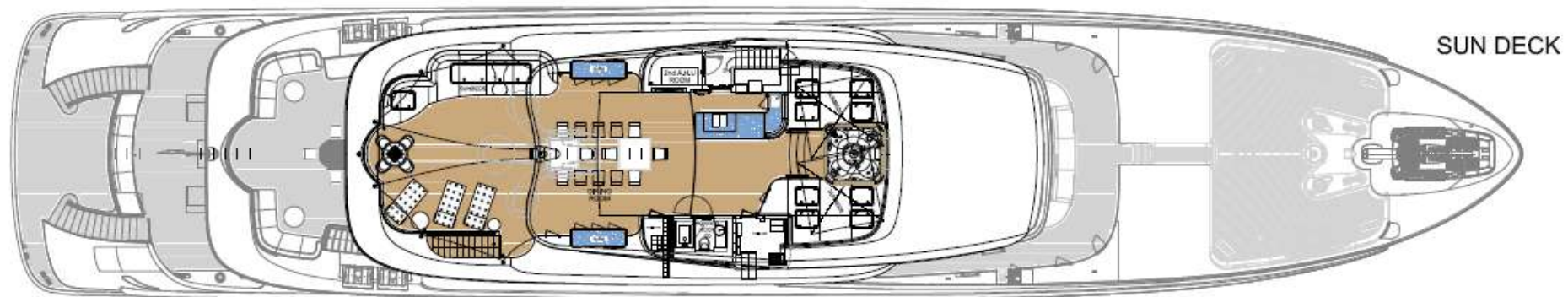
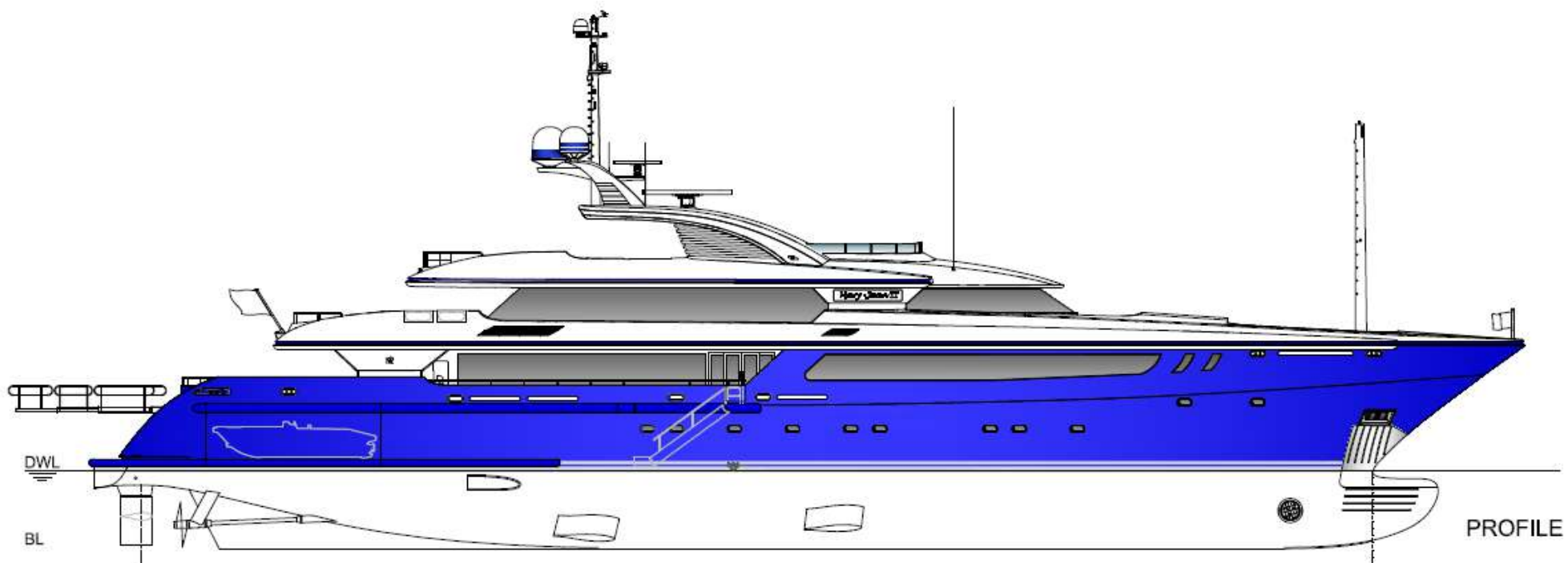
Mary-Jean II

Mary-Jean II

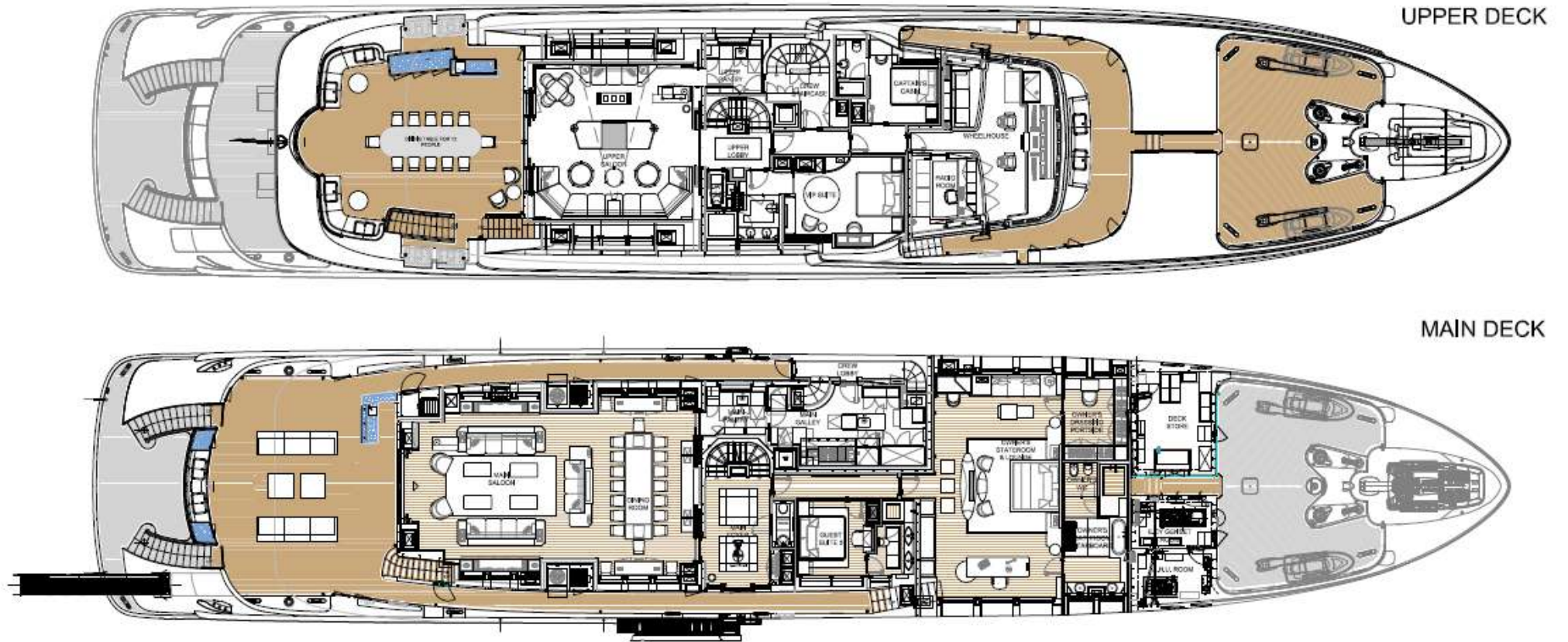




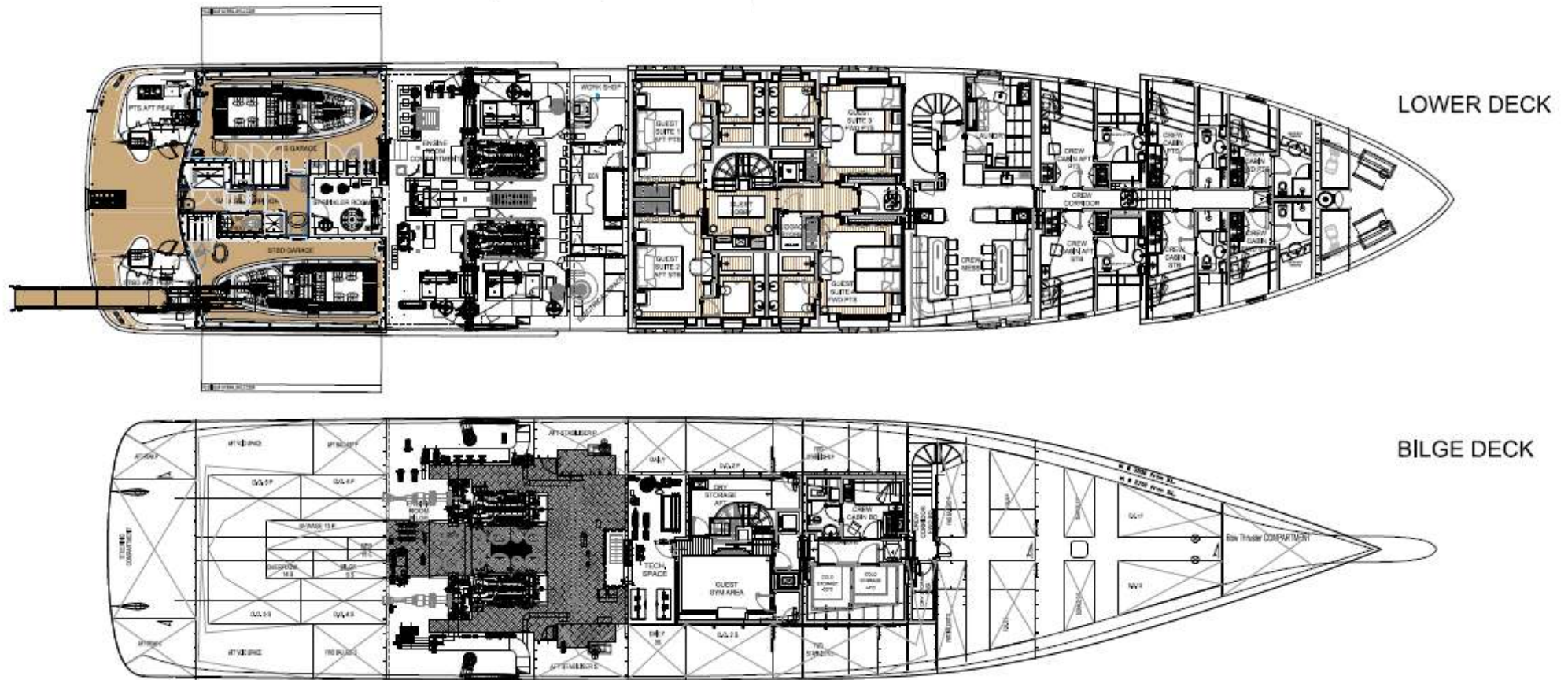
LAYOUT



LAYOUT



LAYOUT



RATES & LOCATIONS

WINTER

The Caribbean

High Season

Christmas & New Year

USD 375.000/wk

Low Season

January-March

USD 320.000/wk

SUMMER

The Mediterranean

High Season

July & August

EUR 375.000/wk

Low Season

June & September

EUR 320.000/wk

Price exclude VAT + 30% Expenses



MARY-JEAN II



FOR CHARTER