

M/Y MIA KAI

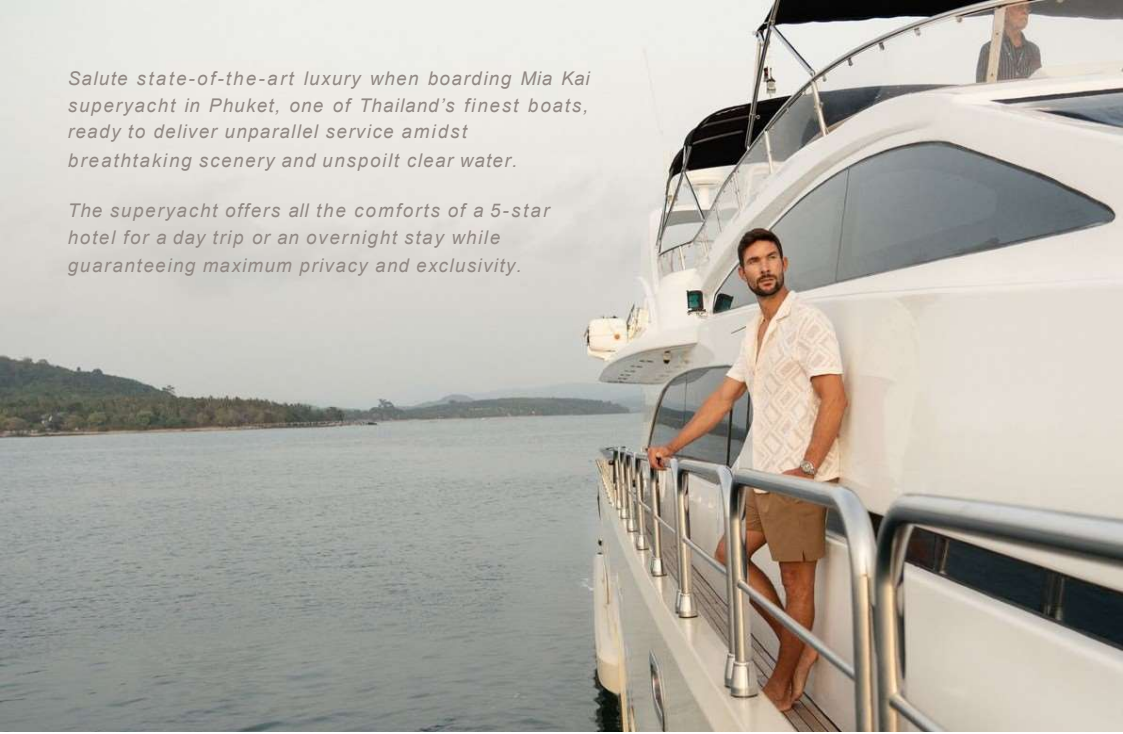
4 double en-suite cabins

Professional crew of 8



Salute state-of-the-art luxury when boarding Mia Kai superyacht in Phuket, one of Thailand's finest boats, ready to deliver unparalleled service amidst breathtaking scenery and unspoilt clear water.

The superyacht offers all the comforts of a 5-star hotel for a day trip or an overnight stay while guaranteeing maximum privacy and exclusivity.



A CLASS OF ITS OWN.

Welcome aboard a 30-metre superyacht equipped with four bedroom suites, 2 x double master and 2 x twin cabins featuring en-suite bathrooms.

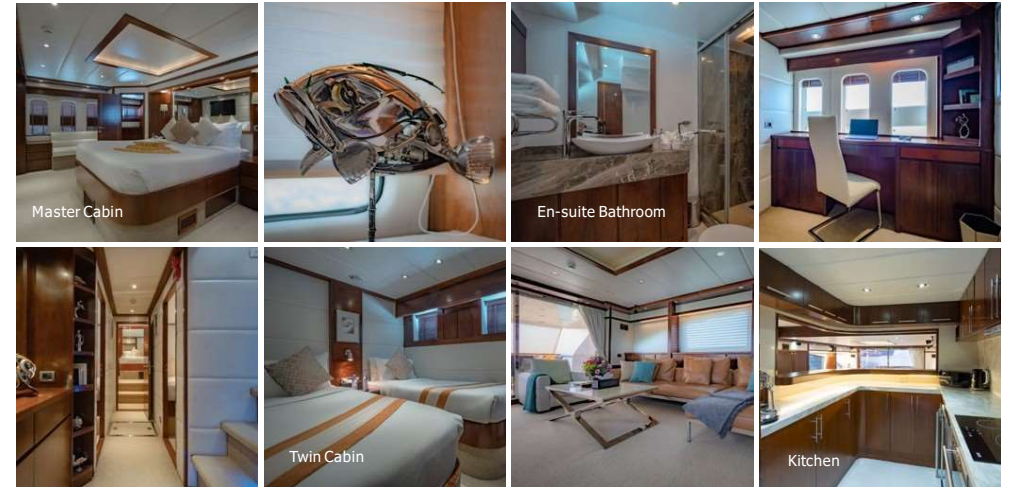
This stylish and meticulously maintained superyacht was built in 2007 and was extensively refitted in 2017. The boat caters for all comforts, including Jacuzzi and cocktail bar on the top deck, interior and exterior lounging and dining areas on the lower deck and a fore deck pad for sunbathing.



ALL-INCLUSIVE COMFORTS.

Guests can enjoy an all-inclusive service and customisable experiences. From a relaxing escape to adventurous fun, everything is planned to the finest detail. Following a private pick-up service, guests will board the ship and embark on a day trip or an overnight stay exploring the Phang Nga Bay area and surroundings.

The cruising can range from Ranong to Myanmar border all the way south to Langkawi.*



*Extra fuel charges may apply for trips outside Phuket and Phang Nga Bay.

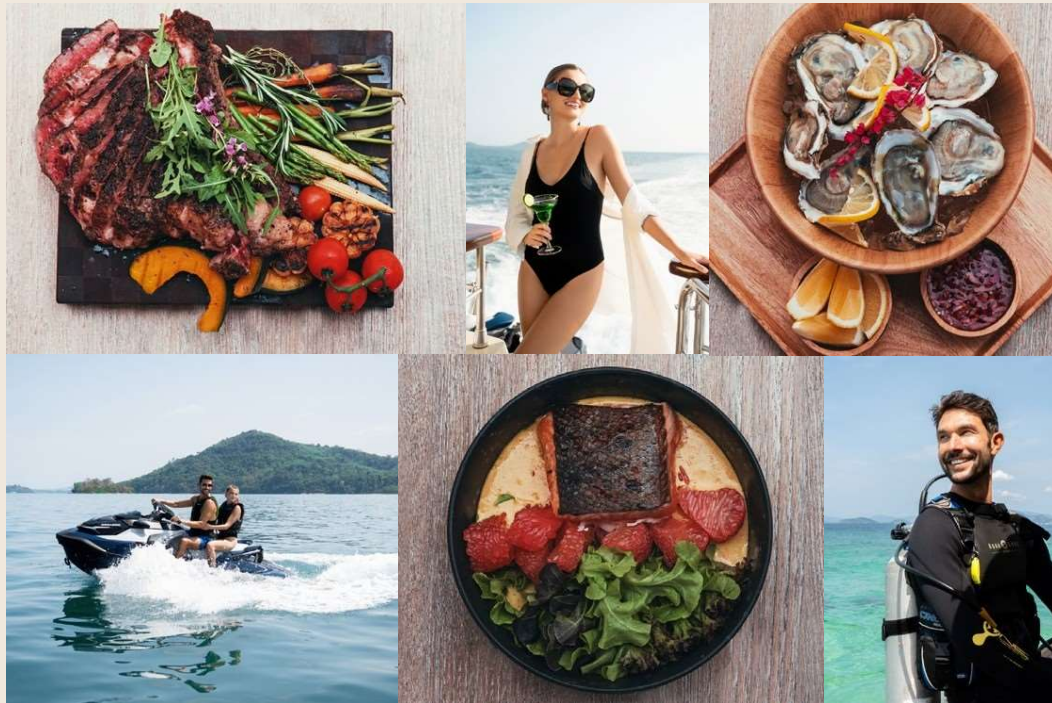
Lenght	96 ft / 29.5 m
Builder	Bilgin Yachts
Year	2007 / 2016
Refitting	2017
Cruising Speed	12Kts
Max Capacity	22 (for day trip)
Overnight Capacity	8
Crew	8
Cabin Number	4
Air Conditioned Cabin	All
Bathrooms	4

FOOD AND DRINKS EXCELLENCE.

After a day of activities and adventures, guests can enjoy the unique culinary delights of the Yacht's private chef.

Dishes range from Asian specialities to Western classics. All ingredients are locally sourced or imported to ensure no compromise is made on quality and taste. All soft drinks, house wines, beer and water are included.*

** Fine wines and spirits are not included but available upon request*



*On board of MIA KAI you will be treated like kings and queens. Drinks, Food, Service, and Entertainment is all part of the superyacht's all-inclusive comforts.**



** Activities like scuba diving are available but are not included. Advance booking is highly recommended.*

YACHT TOYS.

COMPLIMENTARY

1x 6.2m Fully covered 8 guest tender with dive tank rack and fresh water shower

- 1x Seadoo jetski 3-seat
- 1x Water skis
- 1x Wakeboard
- 1x Banana Boat
- 2 x Stand-up paddle board
- Snorkeling equipment
- Inflatable T-dock
- Inflatable water toys (3-pax wing, 1-pax bullet)
- 2 x 3-Pax inflatable sea kayaks
- 4 x Deep-sea trolling rods, reels

TRAVEL TO PARADISE.

Thailand offers limitless opportunities for an unforgettable tropical escape. The country has a long-proven history of being one of Asia's favourite tourist destinations. Not surprisingly, given its rich history, welcoming people and some of the world's best beaches and coral reefs.

The 'Land of Smiles' can offer something for adults and children alike, from visiting an ethical elephant sanctuary to diving or enjoying a luxurious spa.

Phuket is a popular choice to explore the pristine waters of the South of Thailand thanks to its proximity to the famous Phi Phi Island and many Marine National Parks. The scenery is simply breathtaking!

Cruising is available all year round, and the Captain and Crew have more than 10 years of experience in navigation and service on board. They can ensure every client's stay is safe by planning each route carefully, taking into account the weather, currents, and any potential hazards.

DESTINATIONS.

From November – April

Phuket
Phuket west coast beaches
Similan Islands

Surin islands southeast of Phuket such as Lanta, Koh Ha Yai, Koh Rok, Koh Muk, Kradan, Butang Group, Koh Lipe, Tarutao National Park*

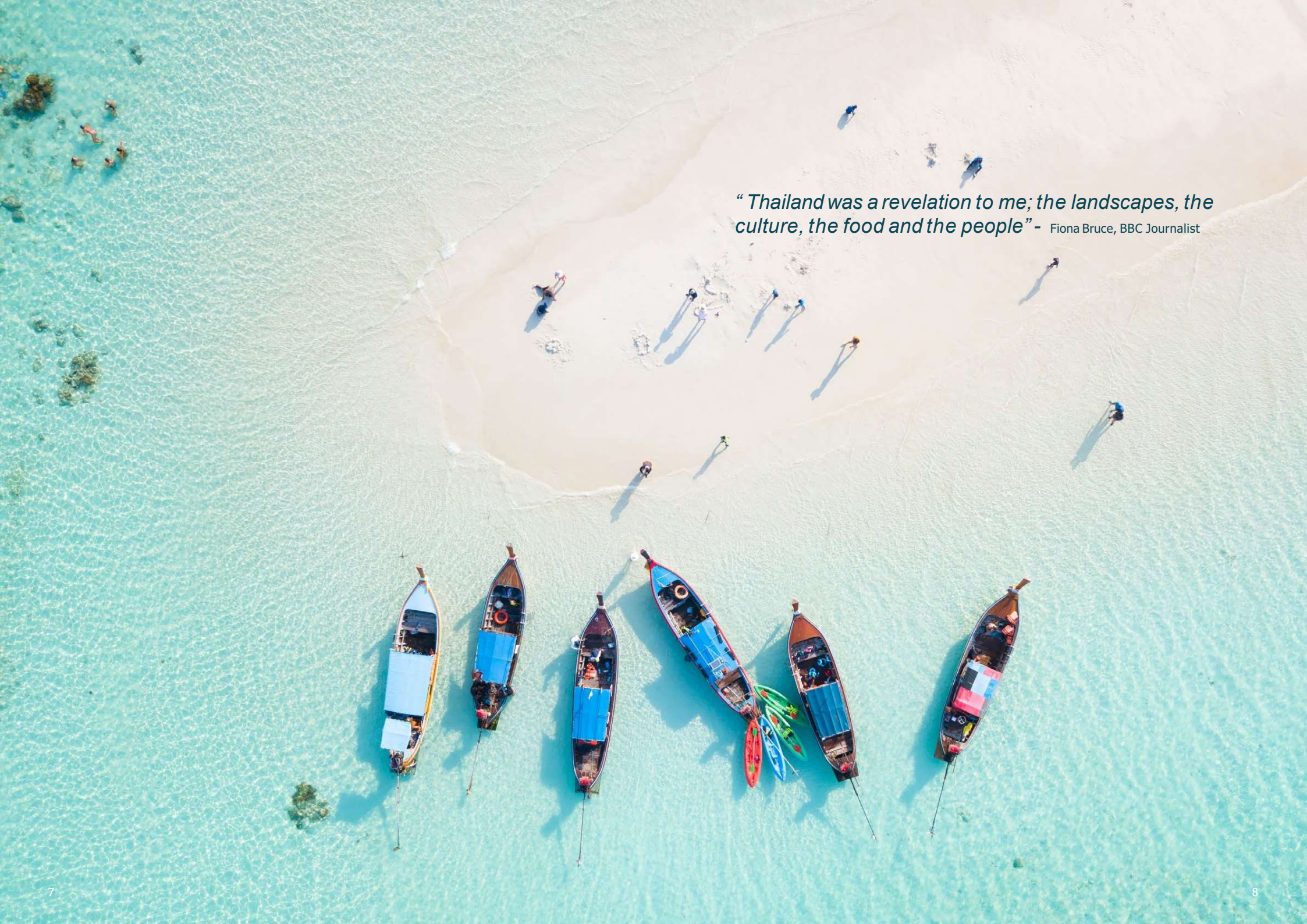
From May – October

Phuket
Phang Nga
Krabi

Surin islands southeast of Phuket such as Lanta, Koh Ha Yai, Koh Rok, Koh Muk, Kradan, Butang Group, Koh Lipe, Tarutao National Park*

**weather conditions permitting. Relocation fees may apply.*





“ Thailand was a revelation to me; the landscapes, the culture, the food and the people ” - Fiona Bruce, BBC Journalist



PHUKET LUXURY ESCAPE.