



# Novela

100' 5" (30.6m) | CBI Navi | 2000

# Novela

## BASIC SPECIFICATIONS

---

### BUILDER

CBI Navi

### BEAM (ft/m)

23' 8" (7.2m)

### CRUISING/MAX SPEED

12.5 / 15 Knots

### CREW

5

### RANGE

3500 nm

### LENGTH (ft/m)

100' 5" (30.6m)

### DRAFT (ft/m)

7' 3" (2.2m)

### FUEL CONSUMPTION

275 Litres/Hr

### ACCOMMODATION

8 guests in 4 cabins

### INTERIOR DESIGNER

Luca Dini / Sasa Milosavljevic

### BUILT/REFIT

2000 / 2019

### GROSS TONNAGE

224 GT

### ENGINES

2 x Caterpillar 3412C

### ARRANGEMENTS

# Novela

## KEY FEATURES

---

- › **STYLISH AND MODERN INTERIOR**
- › **VERY SPACIOUS FLYBRIDGE**
- › **A WIDE SELECTION OF WATER TOYS**
- › **ACCOMMODATES 8 GUESTS IN 4 ELEGANT CABINS**
- › **EXPERIENCED AND LONG TERM CREW**
- › **LARGE WINDOWS IN THE MASTER SUITE WITH STUNNING VIEW**
- › **LARGE SUNBATHING AREA**

# Novela

## WATER TOYS

---

- › 7.8M (25'6") BIRD EAGLE TENDER WITH 300HP ENGINE
- › ZAPATA FLYBOARD AND HOVERBOARD
- › 2 X 10 6FT PADDLEBOARDS
- › 2 X SKIS
- › 1 X 3 MAN SOFA
- › 1 X SEADOO JET SKI - RXP - X 260HP 2 SEATER
- › 2 X SEA BOBS (2017)
- › 2 X WAKE BOARD
- › 4 X MONO SKIS
- › SNORKELLING EQUIPMENT
- › 1 X SEADOO JET SKI - RXT - X 260HP 3 SEATER
- › 1 X FLITE BOARD (2021)
- › 2 X KNEEBOARD
- › 2 X DOUGHNUTS
- › ELIPTICAL CROSS TRAINER ON FLYBRIDGE

NOVELA



















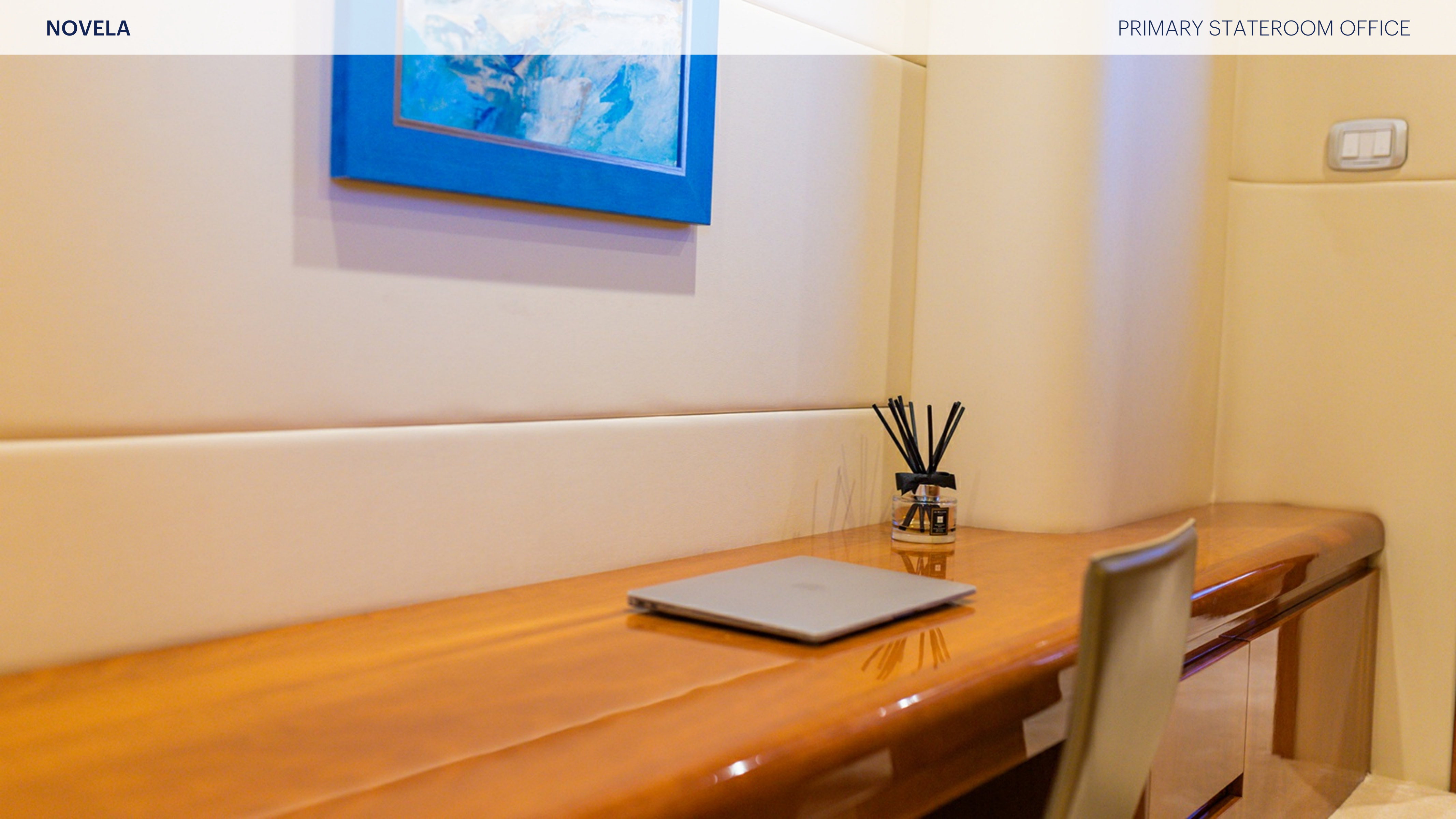














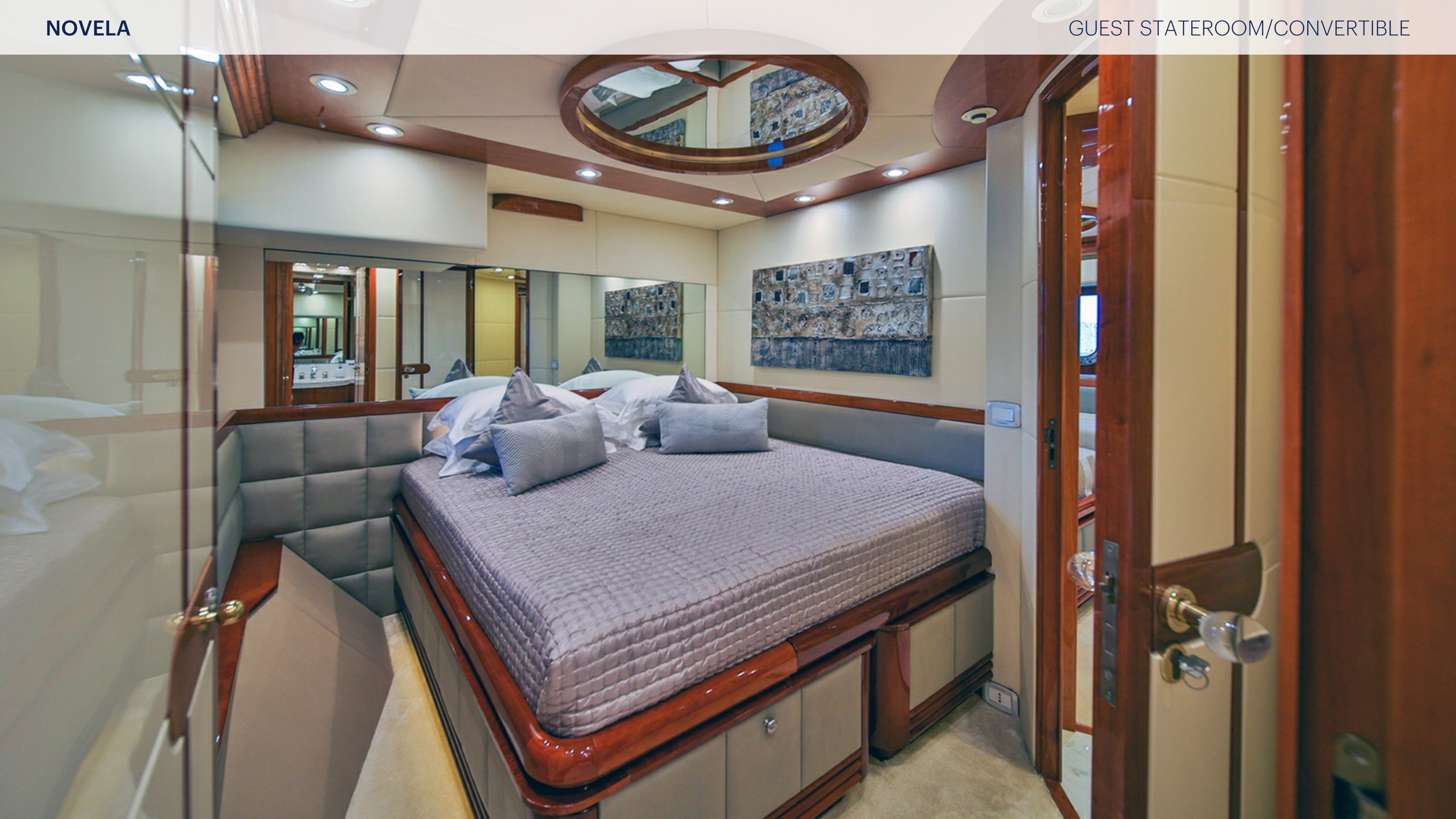






































































NOVELA

AERIAL





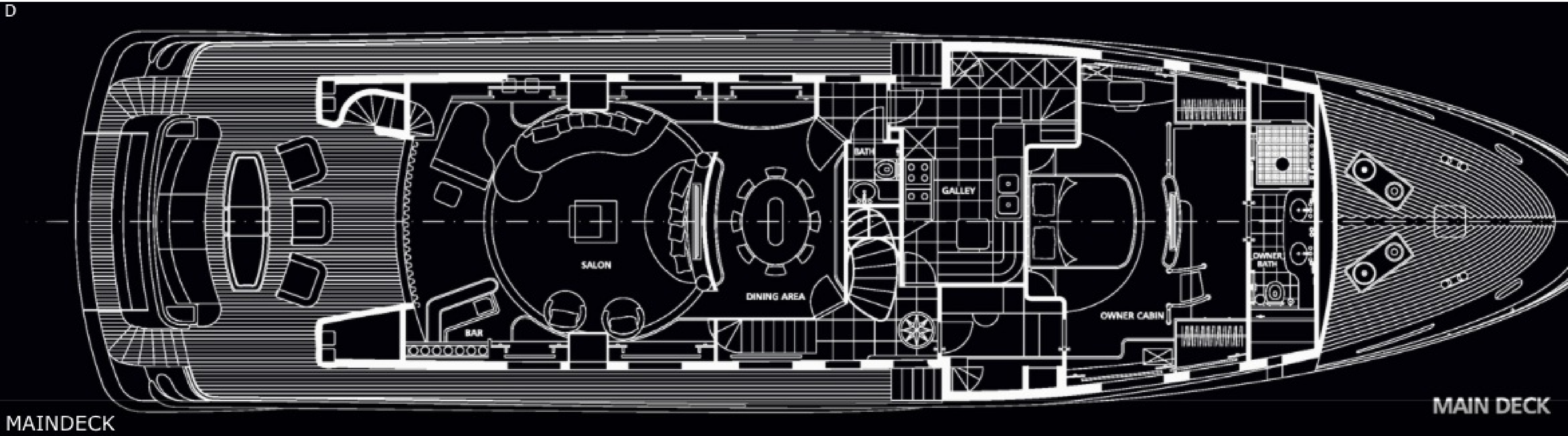
NOVELA

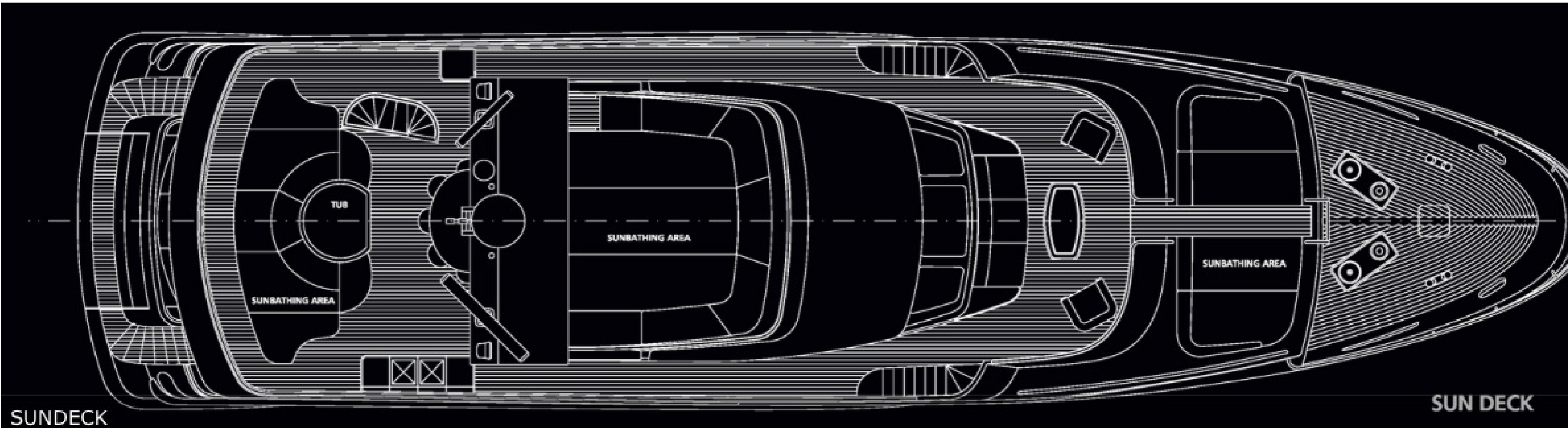
AERIAL













D

