



Oak

114' 10" (35m) | Benetti | 2005

Oak

BASIC SPECIFICATIONS

BUILDER

Benetti

BEAM (ft/m)

24' 8" (7.5m)

CRUISING/MAX SPEED

12 / 14 Knots

CREW

7

RANGE

LENGTH (ft/m)

114' 10" (35m)

DRAFT (ft/m)

7' 3" (2.2m)

FUEL CONSUMPTION

220 Litres/Hr

ACCOMMODATION

11 guests in 5 cabins

INTERIOR DESIGNER

Kate Bingham

BUILT/REFIT

2005 / 2022

GROSS TONNAGE

247 GT

ENGINES

2 x CATERPILLAR CAT C32 1044
KW (1400HP)

ARRANGEMENTS

3 Double, 2 Twin

Oak

KEY FEATURES

- › JACUZZI ON THE UPPER DECK
- › FULL-BEAM MASTER CABIN ON MAIN DECK
- › ZERO-SPEED STABILIZERS
- › SPACIOUS AND ELEGANT INTERIOR
- › VAST VARIETY OF WATER TOYS

Oak

WATER TOYS

- › TENDER NOURAVIA 4,20M ENGINE 60HP SUZUKI
- › 2 X SUP
- › 1 X MONOSKI
- › INFLATABLE SOFA
- › DRONE
- › 2 X SEA SCOOTER IAQUA
- › 2 X WATERSKI FOR ADULTS
- › 1 X WAKEBOARD
- › INFLATABLE PLATFORM
- › 1 X ELECTRIC SCOOTER
- › 2 X SEA SCOOTER SUBLUE
- › 1 X WATERSKI FOR CHILDREN
- › 2 X TUBES
- › SNORKELING EQUIPMENT

OAK



OAK





OAK



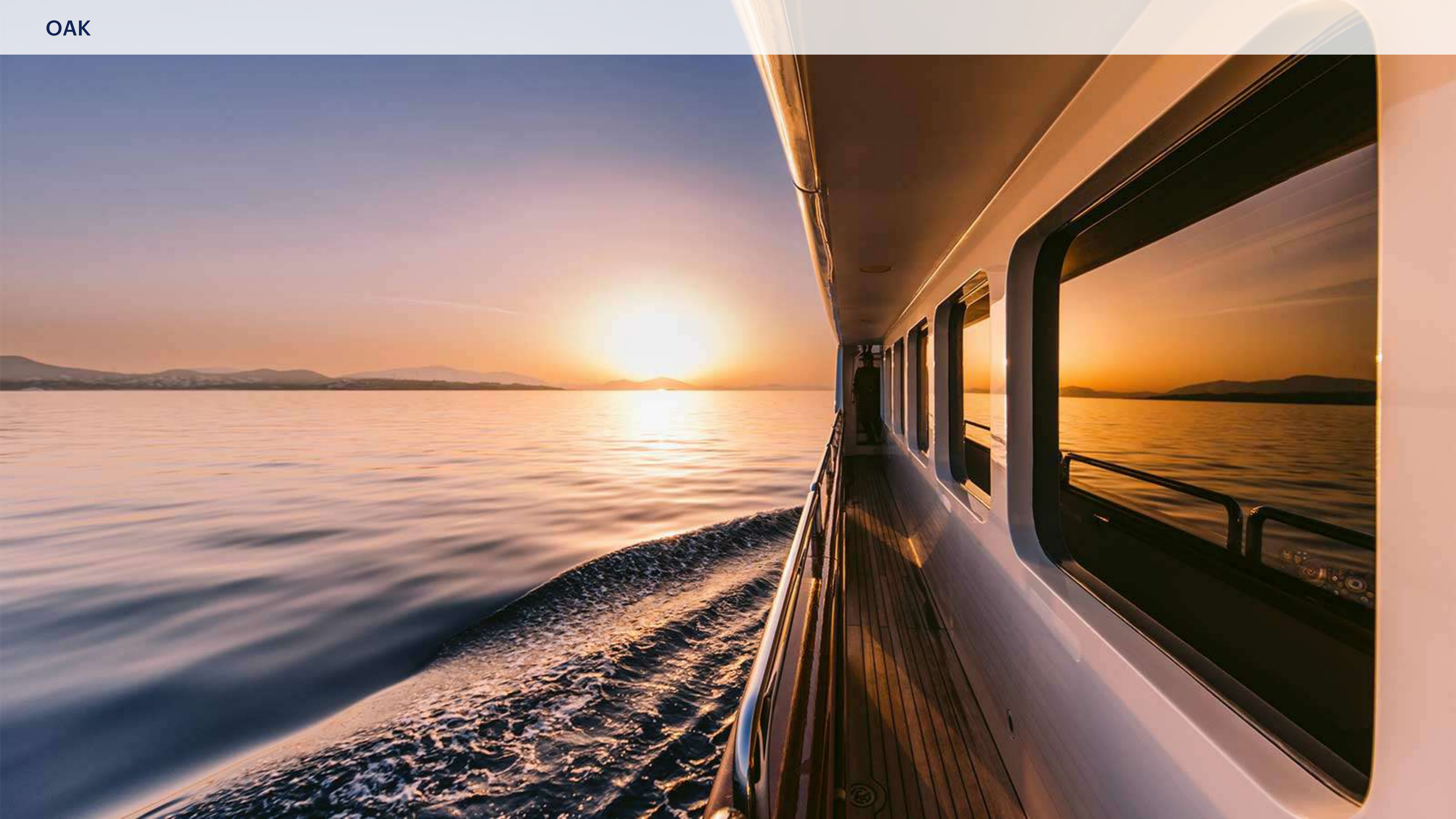
OAK



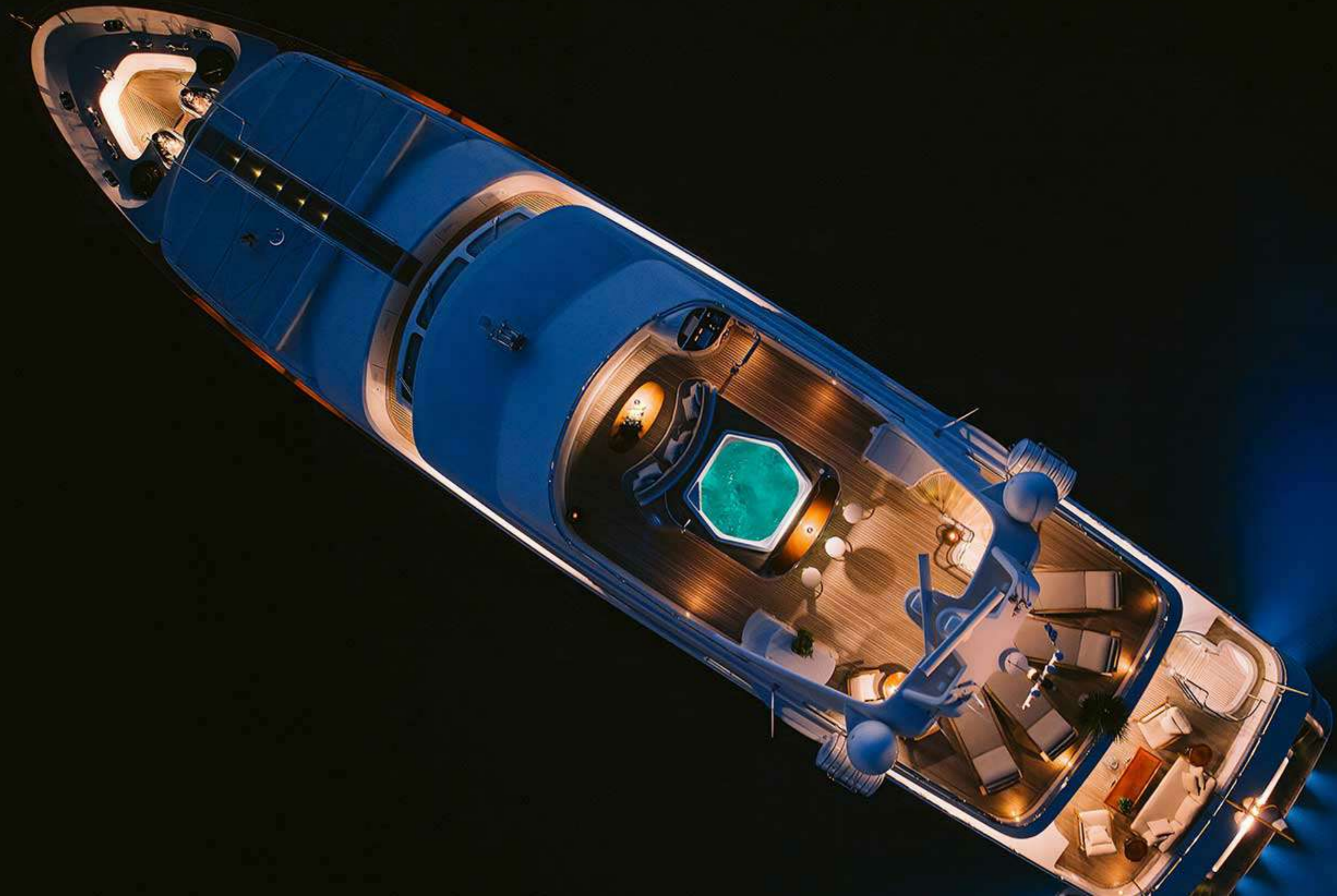
OAK



OAK



OAK

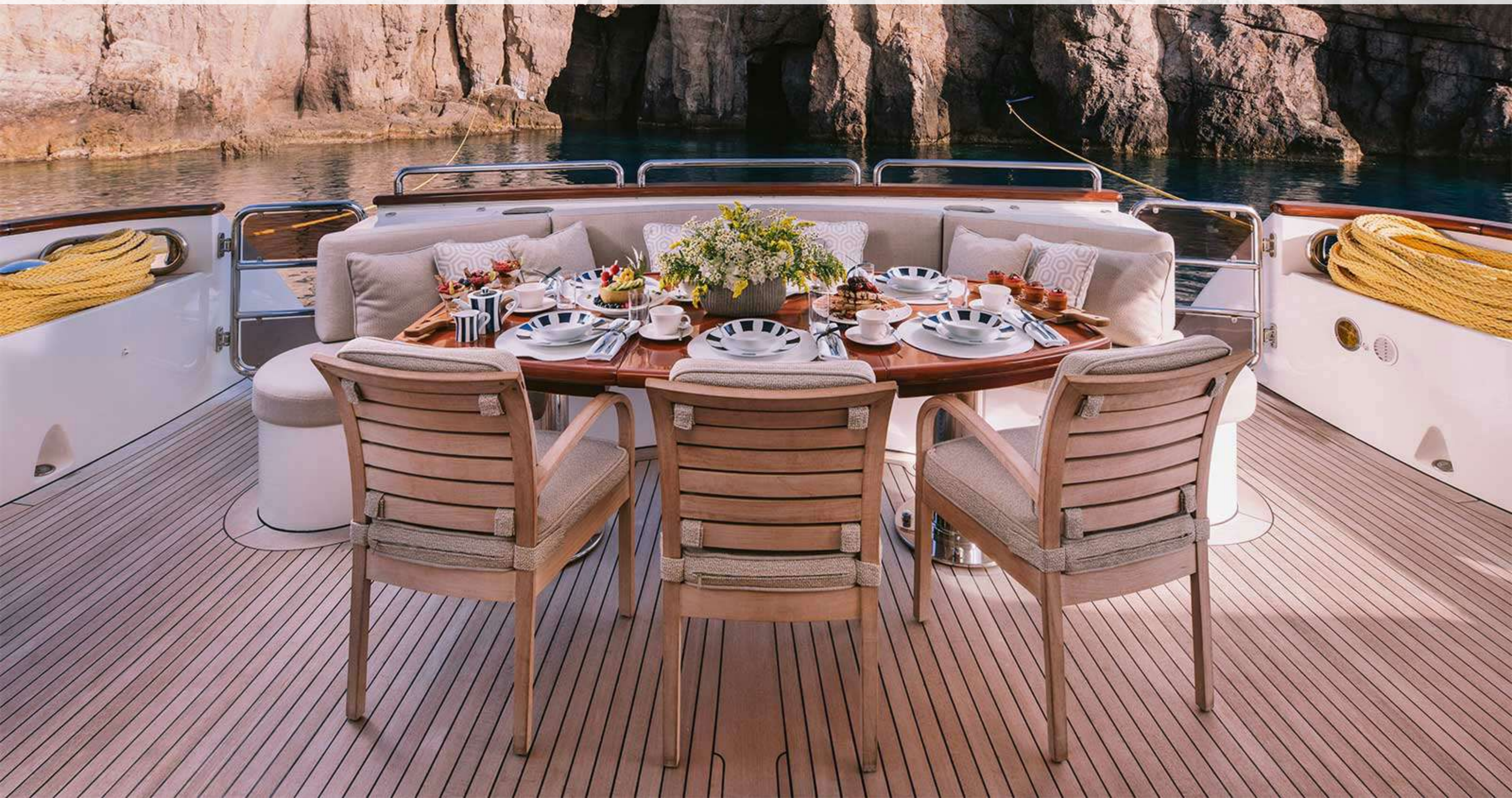


OAK



oak

ΠΕΙΡΑΙΕΥΣ











OAK

DINING AREA





OAK

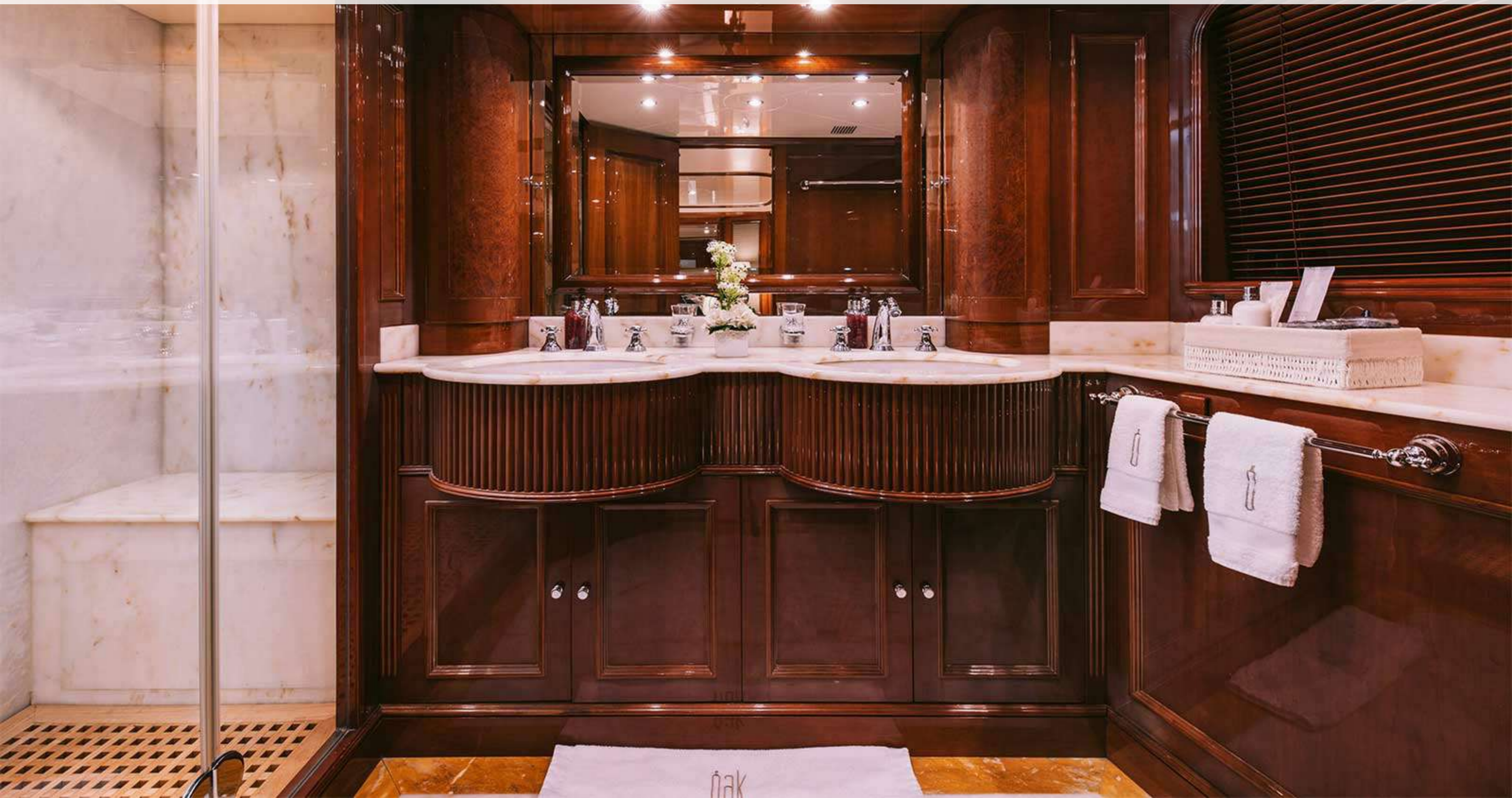
DOUBLE CABIN



OAK

MASTER CABIN STUDY





OAK

DOUBLE CABIN



OAK

DOUBLE CABIN





OAK

TWIN CABIN WITH PULLMAN











OAK

UPPER DECK



OAK

UPPER DECK



OAK

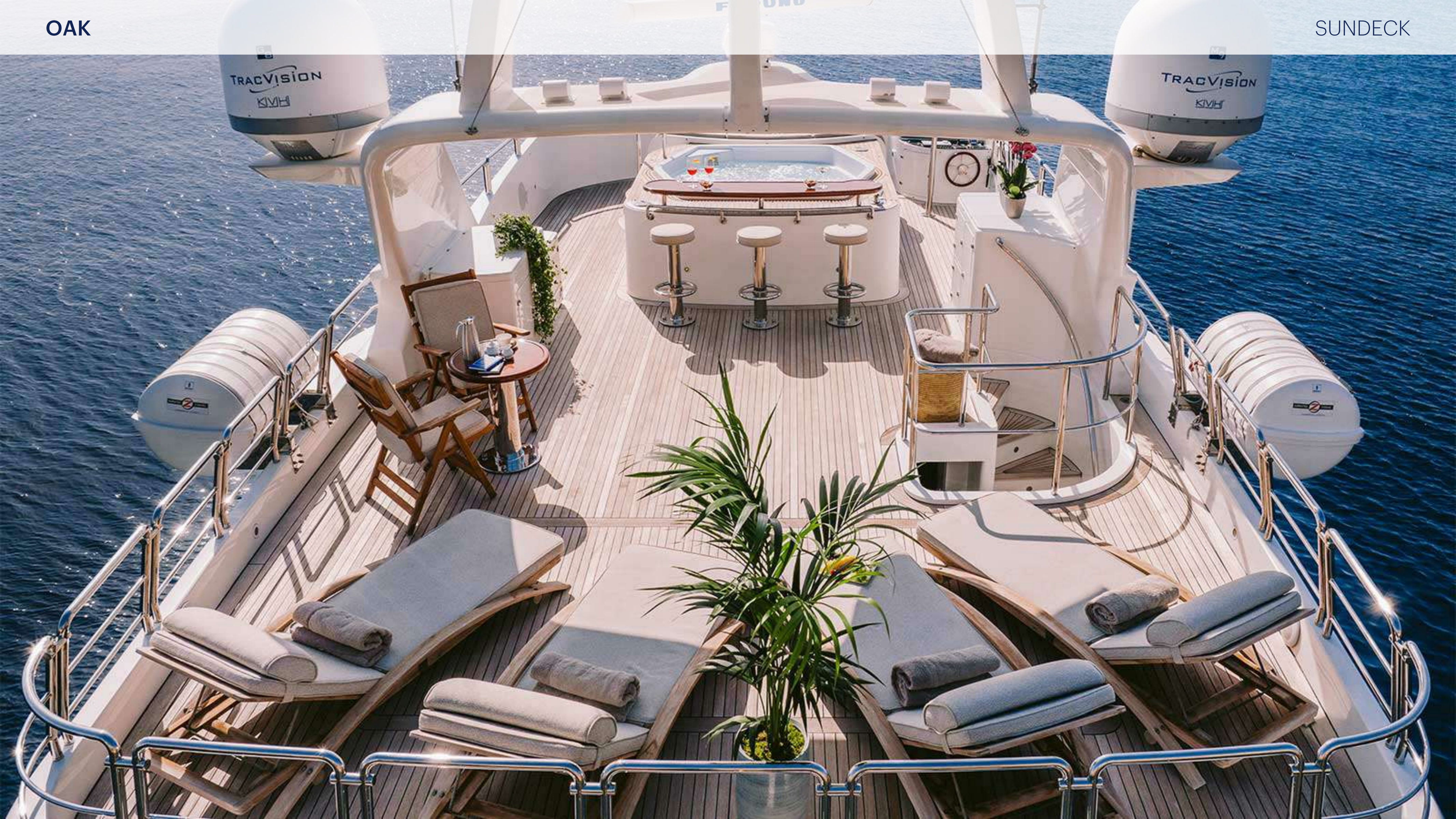
SUNDECK





OAK

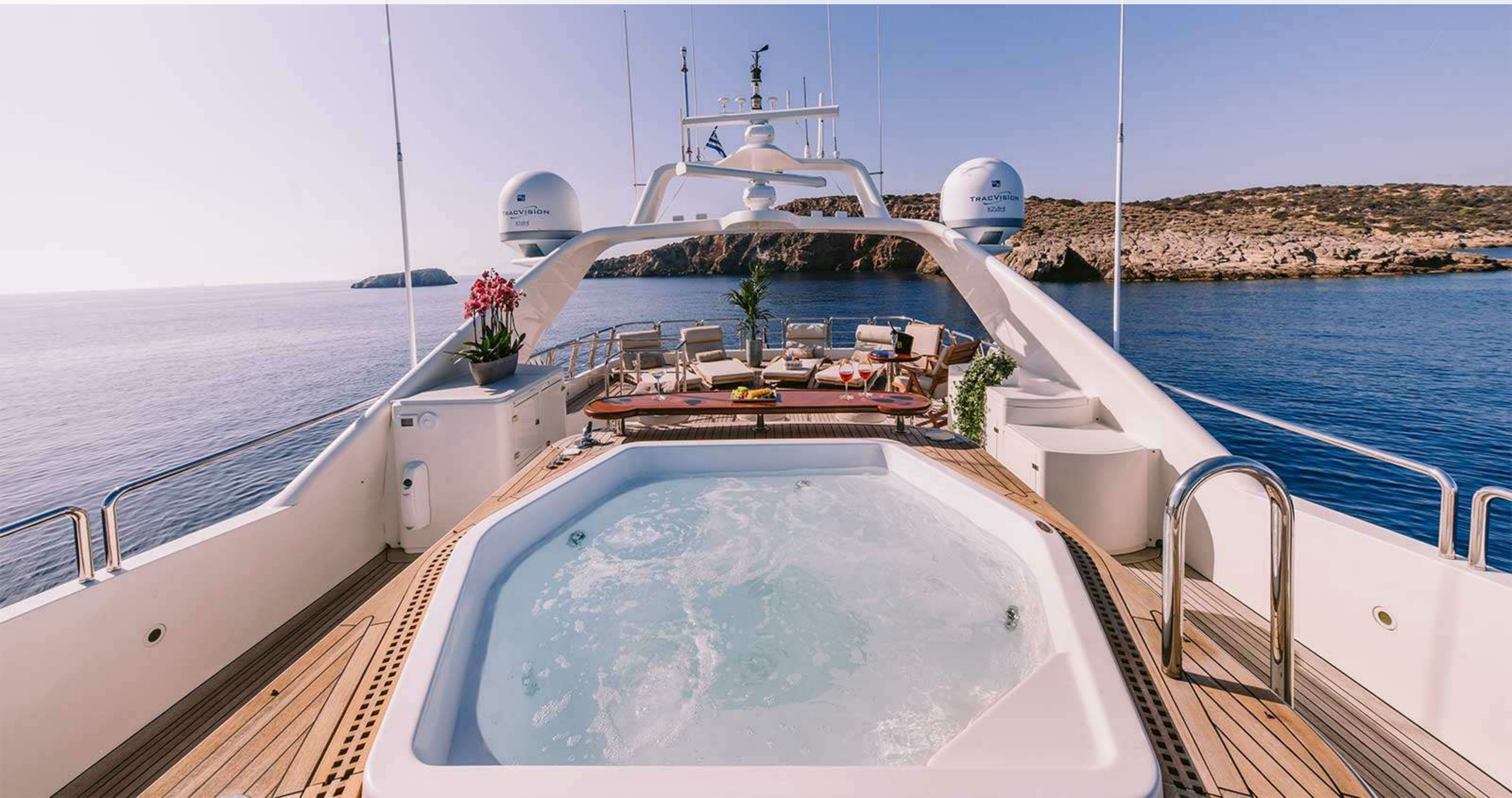
SUNDECK





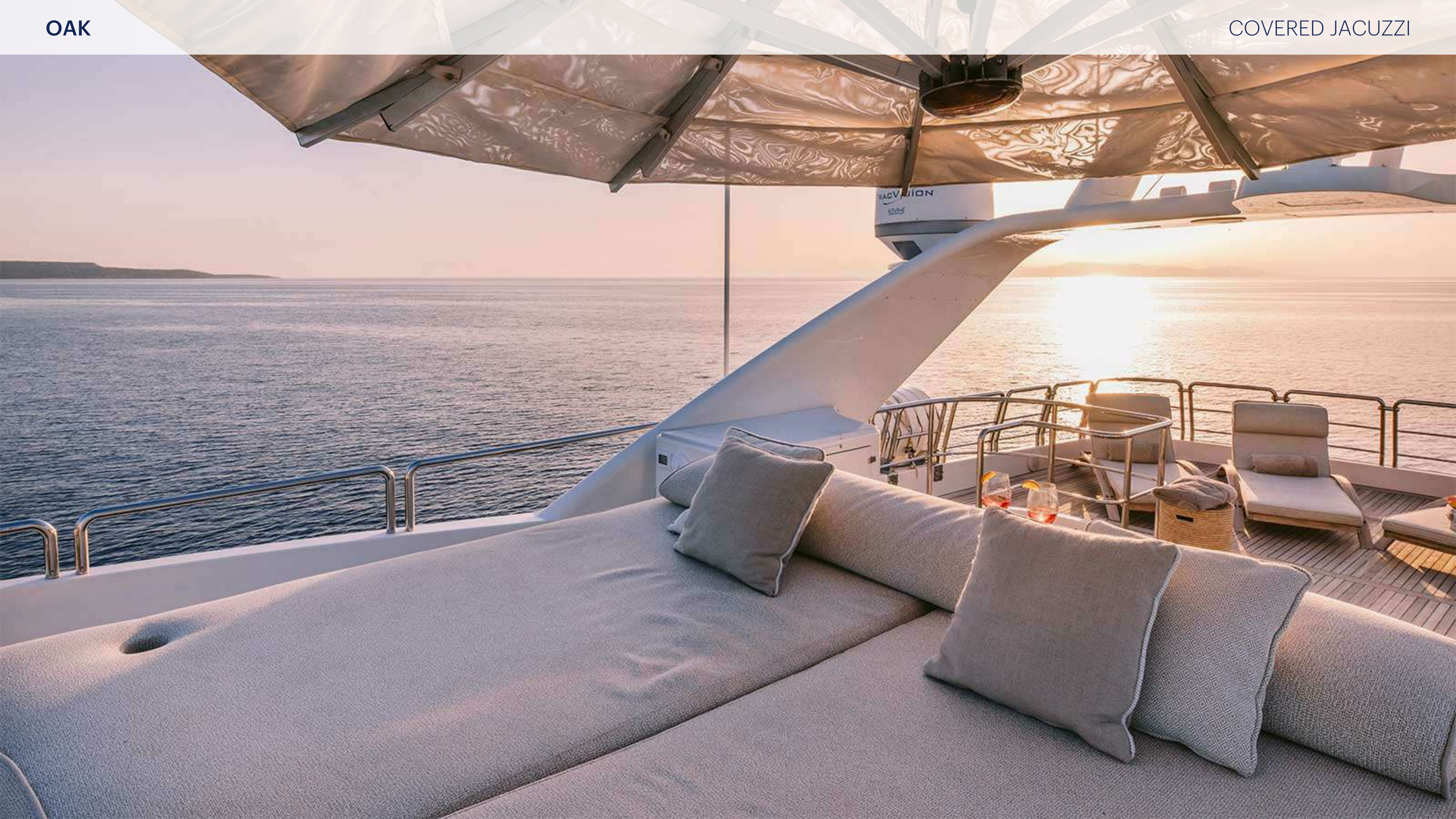




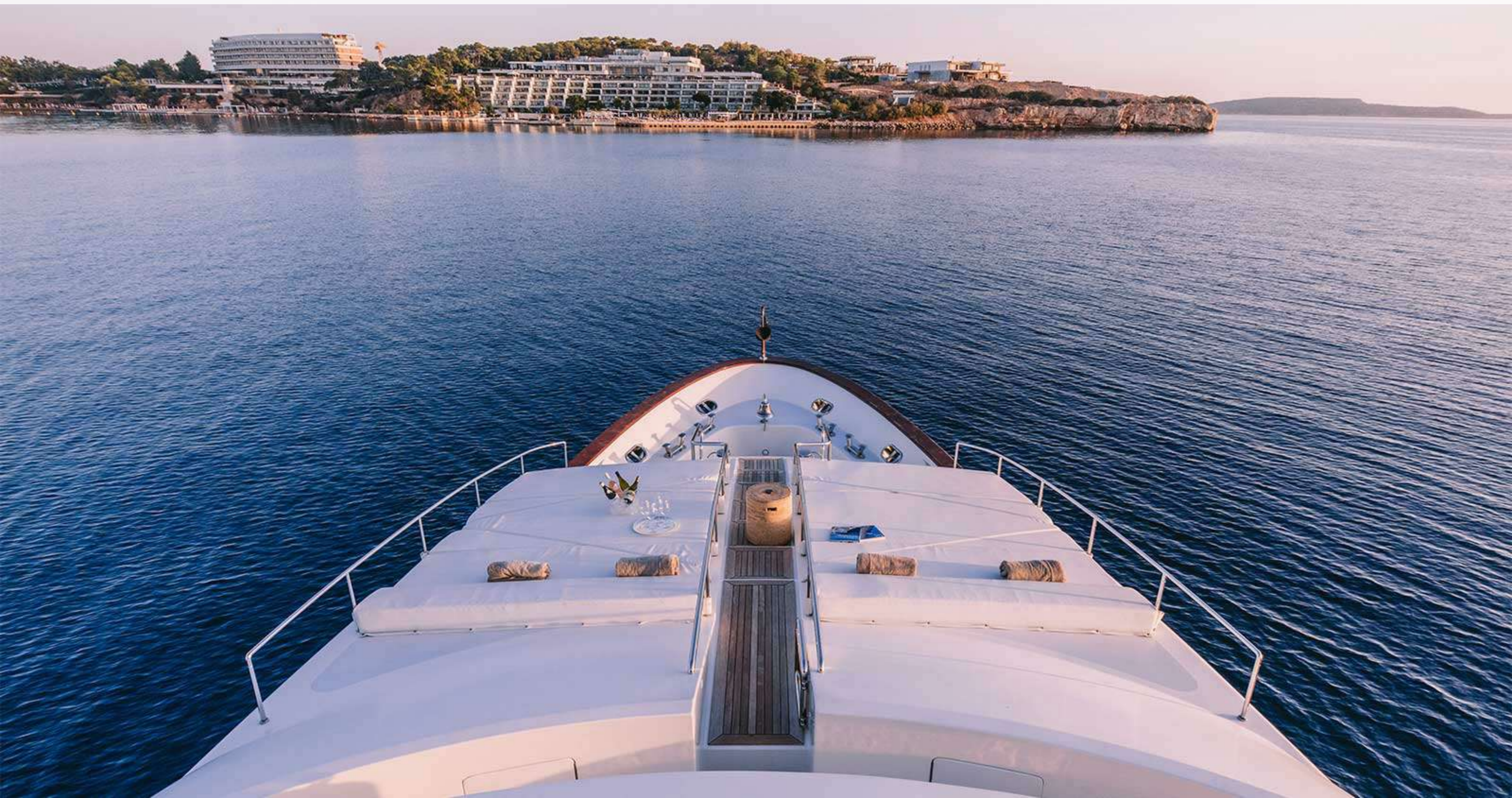


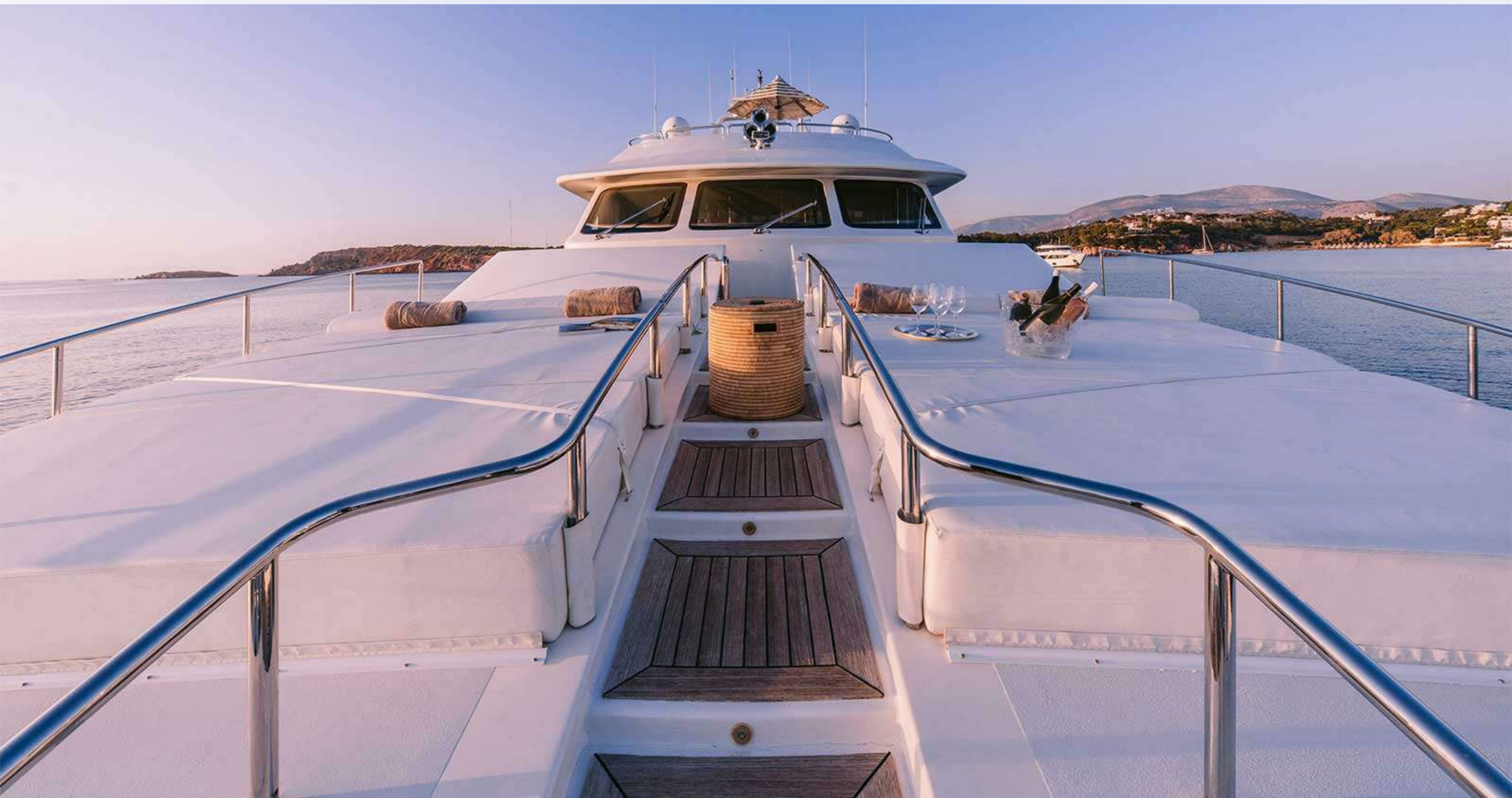
OAK

COVERED JACUZZI









OAK



OAK



OAK

