



OCTAVIA | SUNSEEKER PREDATOR 82



OCTAVIA | SUNSEEKER PREDATOR 82

AT ANCHOR



OCTAVIA | SUNSEEKER PREDATOR 82

AERIAL VIEW



OCTAVIA | SUNSEEKER PREDATOR 82

AERIAL VIEW





OCTAVIA | SUNSEEKER PREDATOR 82

ALFRESCO DINING AND SUNPADS



OCTAVIA | SUNSEEKER PREDATOR 82

AL FRESCO DINING





OCTAVIA | SUNSEEKER PREDATOR 82



DETAILS







OCTAVIA | SUNSEEKER PREDATOR 82

STERN OUTDOOR AREA











OCTAVIA | SUNSEEKER PREDATOR 82

MASTER CABIN BATHROOM













OCTAVIA | SUNSEEKER PREDATOR 82

TWIN CABIN





OCTAVIA | SUNSEEKER PREDATOR 82

TWIN CABIN





OCTAVIA | SUNSEEKER PREDATOR 82

TWIN CABIN WITH PULLMAN BEDS



OCTAVIA | SUNSEEKER PREDATOR 82

SEABOB

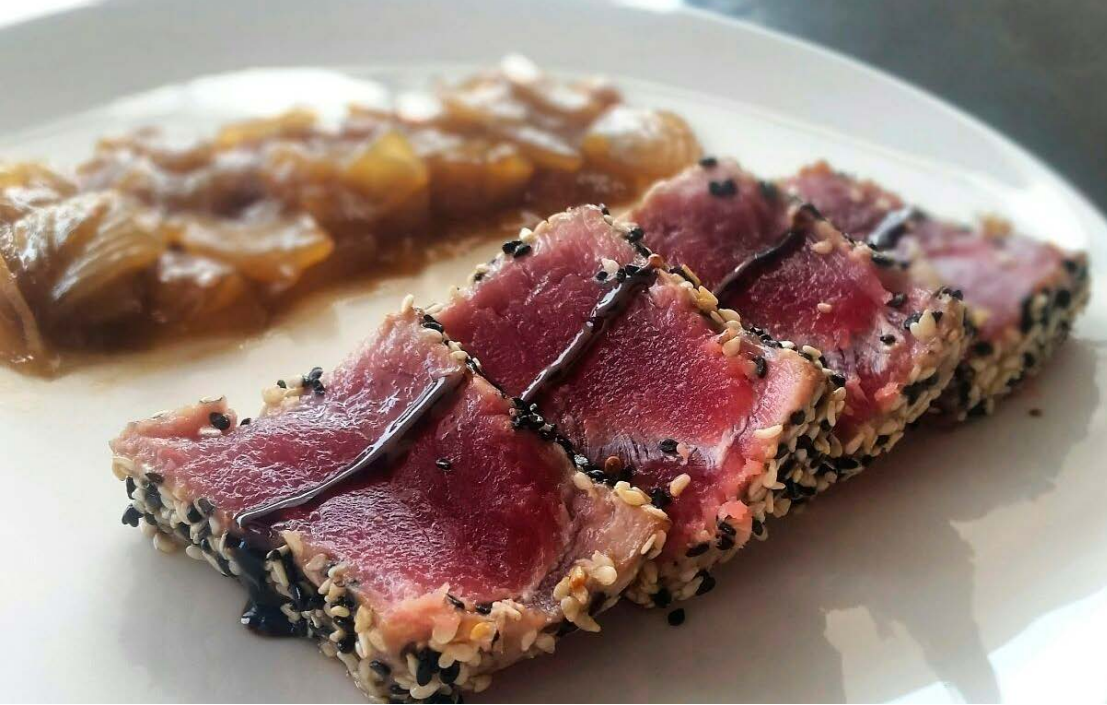












OCTAVIA | SUNSEEKER PREDATOR 82

CHEF'S CREATION



Description

Sportiness and elegance: the Sunseeker 82 Octavia. The answer to those looking environments from large breaths and attention to details. An unforgettable experience.

The outdoor areas are characterized by a large cockpit with folding table, two large and comfortable sofas (one that becomes a comfortable sun). Forward guests find a large sundeck to enjoy the best of the experience offered by Sunseeker 82 Octavia, even at sea. The beach hydraulic stern offers also offers convenient access to the sea.

The large master cabin in the center of the boat, has a king size bed and a walk-in wardrobes. The VIP cabin, instead, offers comfortable accommodation with a queen size bed. The two guest cabins are respectively equipped with two twin beds, the first and bunk beds, the second.

All cabins are en suite with bath with shower and satellite TV channels on SKY.

Octavia is based in Porto Cervo (with berth included) and can be moved across central and southern Italy, ready to leave for the next destination. With its new generation engines have very low fuel consumption at a speed of 23 knots, offering a unique cruise experience.

Technical Specifications

Lenght	25 mt
Beam	4,90 mt
Built	2006 - refit 2015
Engines	2 x 1.680 HP CAT
Cruising speed	24 Kn
Fuel consumption	440 Litres/hour at 24 Knts
Water tanks	1 x 2.000 Lt
Fuel tanks	1 x 6.000 Lt
Cabins	1 Suite, 1 Vip, 2 Twin all with ensuite
Guests	8 sleeping - 12 cruising
Onboard equipment	Internet Wi-Fi, LCD TV in all cabins with SAT receiver and SKY Channels. 42" LCD SAT TV in salon with Sound System.
Crew	Captain + 2
Tender + Toys	3 mt Tender 15HP - Snorkeling equipment - Seabob F6 - SUP - Donu
Base port	Porto Cervo - Sardinia - Italy