



Only One

92' 9" (28.27m) | Mangusta (Overmarine) | 2008

Only One

BASIC SPECIFICATIONS

BUILDER

Mangusta (Overmarine)

BEAM (ft/m)

22' (6.7m)

CRUISING/MAX SPEED

28 / 33 Knots

CREW

4

RANGE

LENGTH (ft/m)

92' 9" (28.27m)

DRAFT (ft/m)

5' 9" (1.74m)

FUEL CONSUMPTION

ACCOMMODATION

12 guests in 4 cabins

INTERIOR DESIGNER

Overmarine Group SPA

BUILT/REFIT

2008 / 2018

GROSS TONNAGE

133 GT

ENGINES

2 x MTU 2450 hp

ARRANGEMENTS

1 king, 1 queen

Only One

KEY FEATURES

- › FULL BEAM PRIMARY STATEROOM
- › EXCELLENT SELECTION OF WATER TOYS
- › IMPRESSIVE MAX SPEED OF 33 KNOTS
- › COMPLETE REFIT IN 2018
- › INDOOR AND EXTERIOR DINING FOR 8
- › AMPLE SUNBATHING AREAS
- › SOPHISTICATED, MODERN AND CONTEMPORARY INTERIORS

Only One

WATER TOYS

- › 1 X SEA-SCOOTER (UNDERWATER SEABOB)
- › 1 X WAKEBOARD
- › SNORKELING
- › 1 X TENDER (2021) WITH INBOARD ENGINE (70/90 HP TBC)
- › 2 X INFLATABLE SUPS
- › JET SKI, SECOND SEABOB AND KAYAK AVAILABLE ON DEMAND ONLY AT EXTRA CHARGE
- › 1 X WATERSKIS
- › 1 X INFLATABLE DONUT

ONLY ONE

AERIAL



ONLY ONE

PROFILE





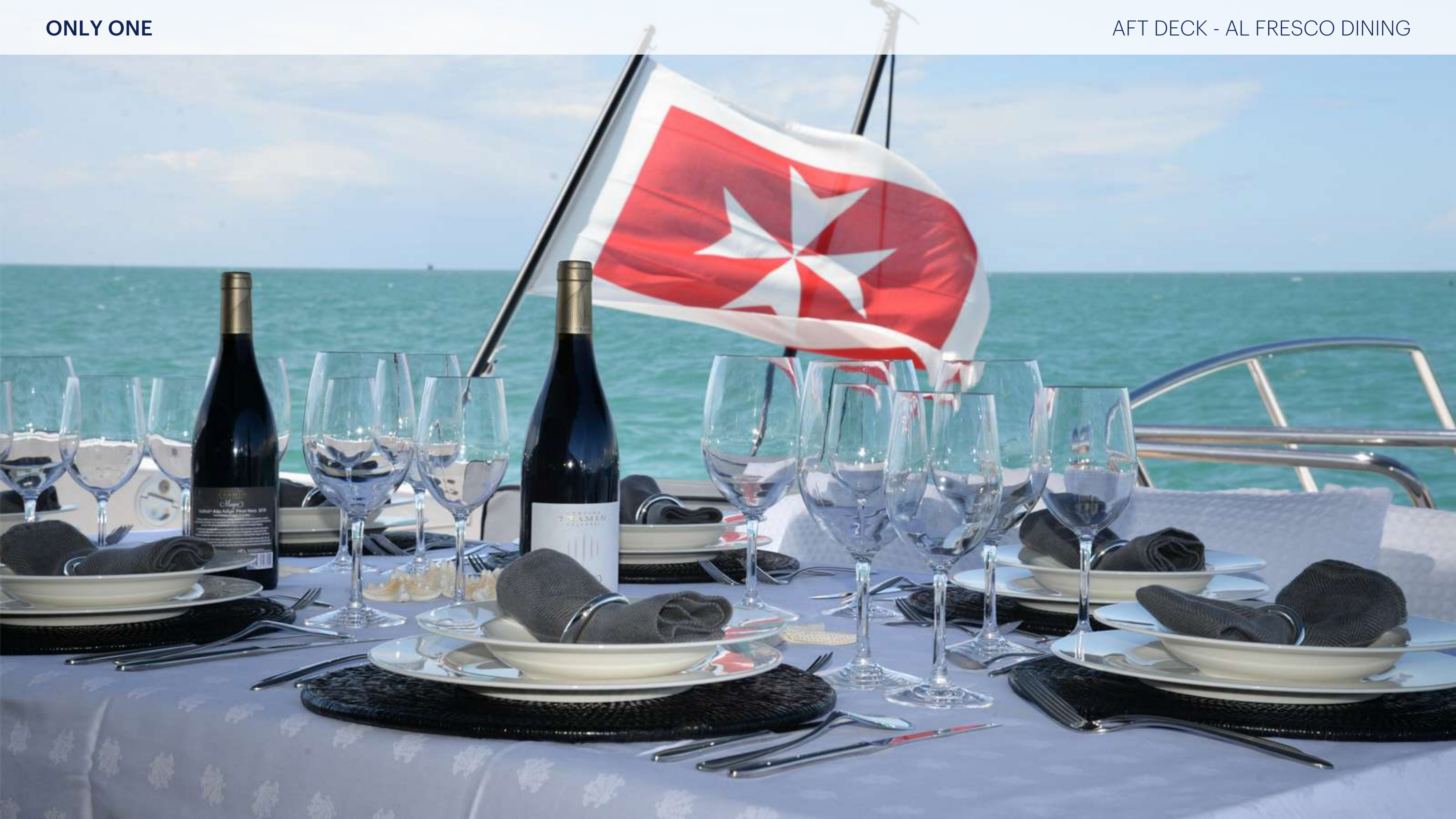
ONLY ONE

AFT DECK - AL FRESCO DINING



ONLY ONE

AFT DECK - AL FRESCO DINING



ONLY ONE

MAIN DECK - SALON



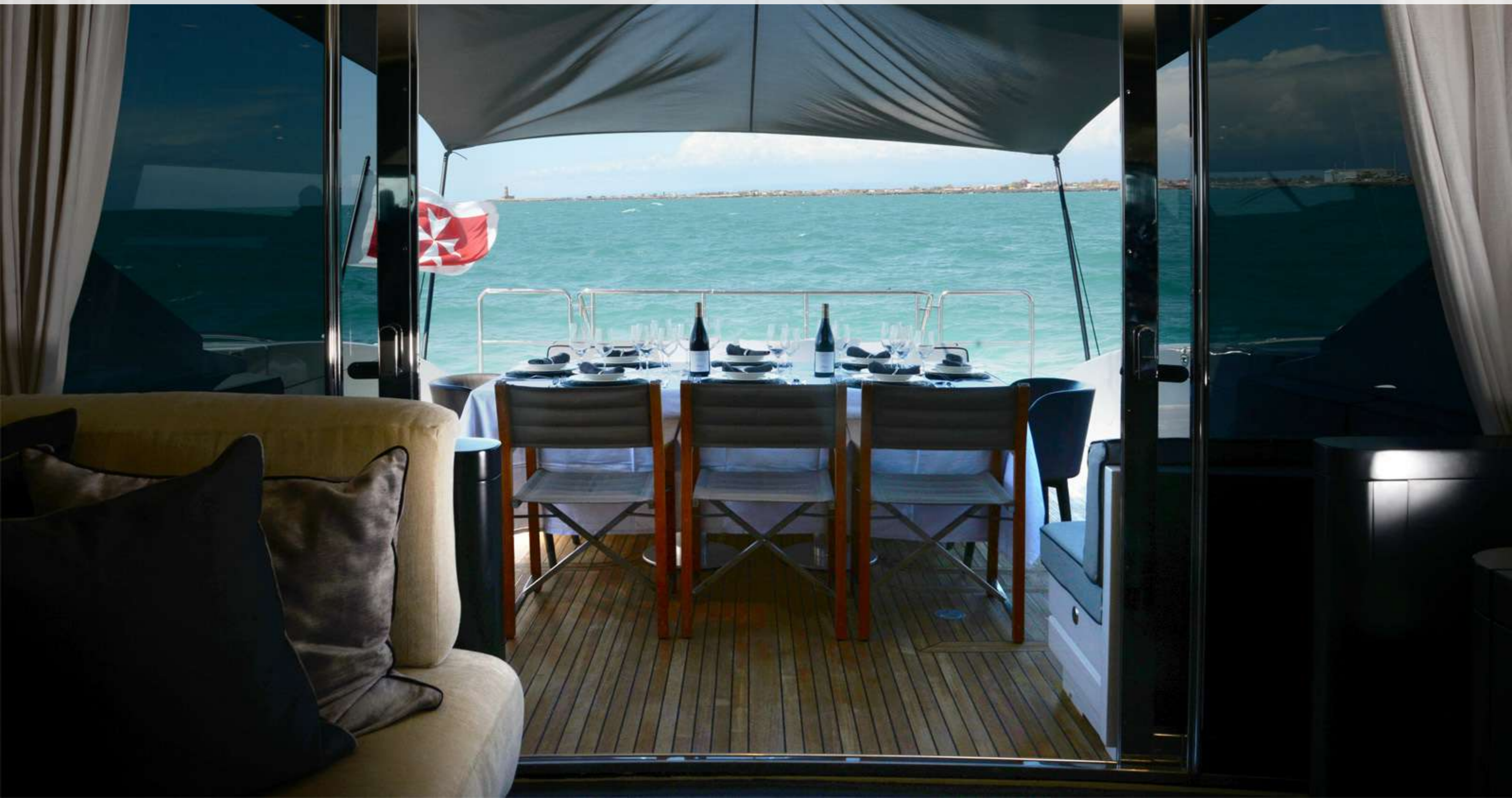
ONLY ONE

AFT DECK - AL FRESCO DINING



ONLY ONE

AFT DECK - AL FRESCO DINING



ONLY ONE

PRIMARY STATEROOM





ONLY ONE

PRIMARY STATEROOM



ONLY ONE

PRIMARY STATEROOM - EN SUITE BATHROOM



ONLY ONE

DOUBLE STATEROOM



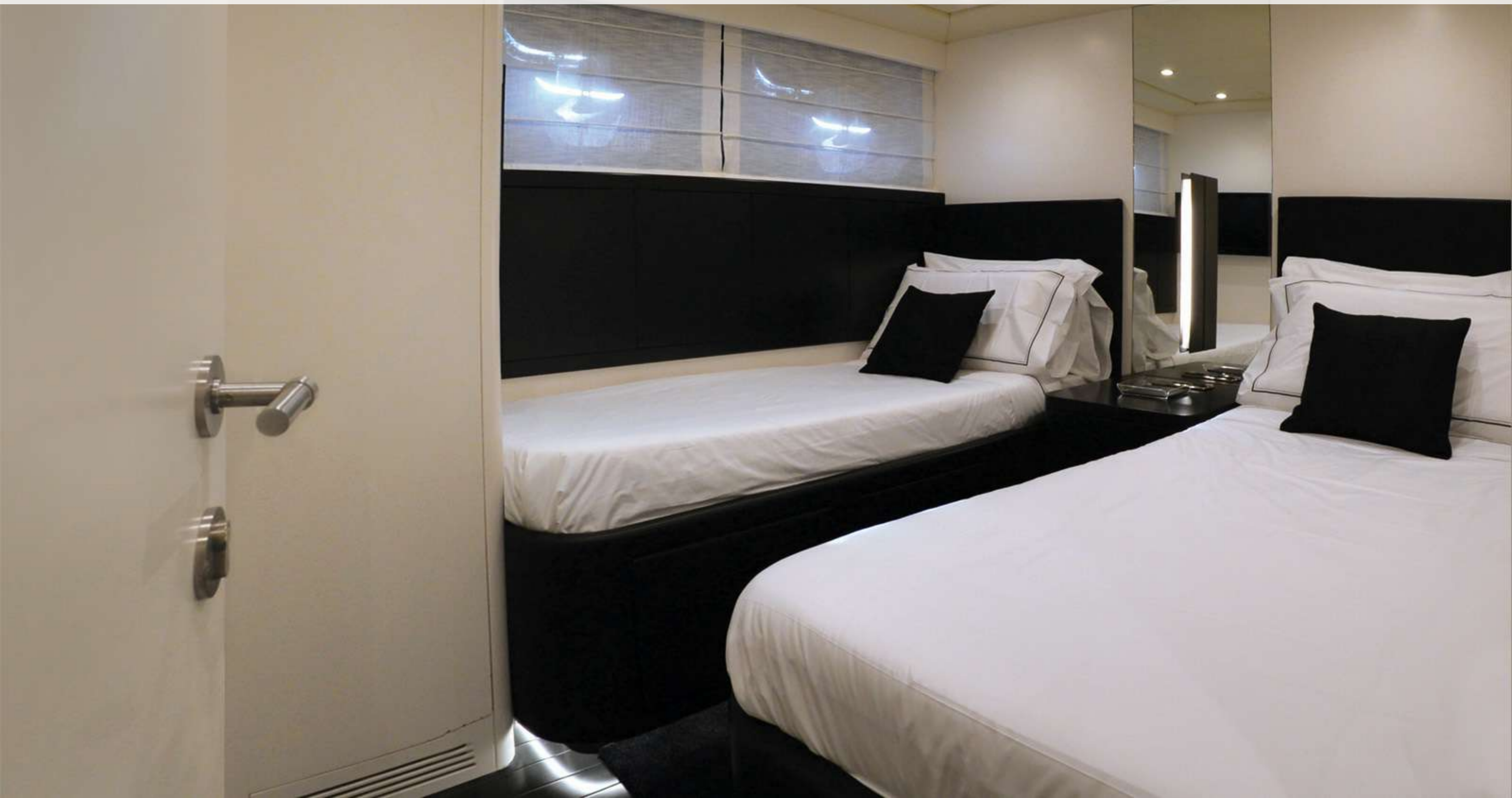
ONLY ONE

PRIMARY STATEROOM



ONLY ONE

TWIN STATEROOM



ONLY ONE

PRIMARY STATEROOM



ONLY ONE



PRIMARY STATEROOM







ONLY ONE

MAIN DECK - SALON



ONLY ONE

MAIN DECK - SALON



ONLY ONE

TWIN STATEROOM - EN SUITE BATHROOM



ONLY ONE

MAIN DECK - SALON









ONLY ONE

MAIN DECK - SALON



ONLY ONE

PROFILE



ONLY ONE

AFT DECK



ONLY ONE

AFT DECK



ONLY ONE

AFT DECK





