

Andrew Winch Designs gave Phoenix a curvaceous and striking exterior design with an interior reflecting the art deco era utilising the greatest 21st century technology and construction.

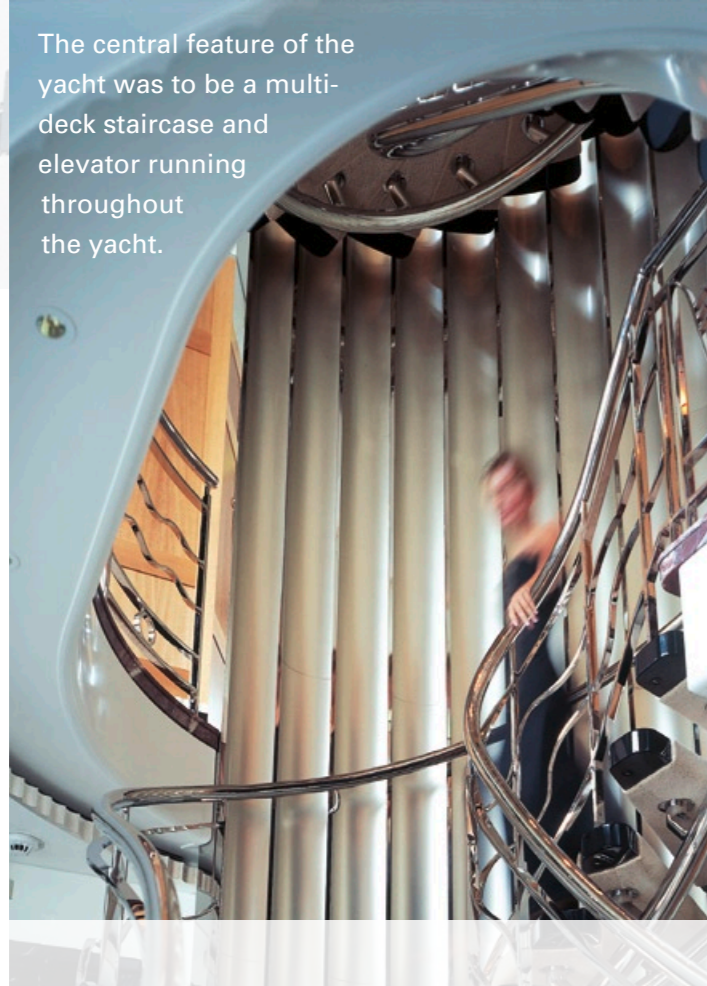
Forward on the main deck is the unique master suite, while she has the more typical full beam master bedroom, two bathrooms and two walk in wardrobes, the hallway contains a private staircase up to the Owners observation lounge.

The VIP cabin is aft on the upper deck, while four further guest cabins are located on the lower deck. Two of the guest cabins link through an athwartships hallway as an additional VIP suite. The tender garage is in the hull, aft on the lower deck, with huge lifting hull doors and an immaculately planned technical engineering and diving area.

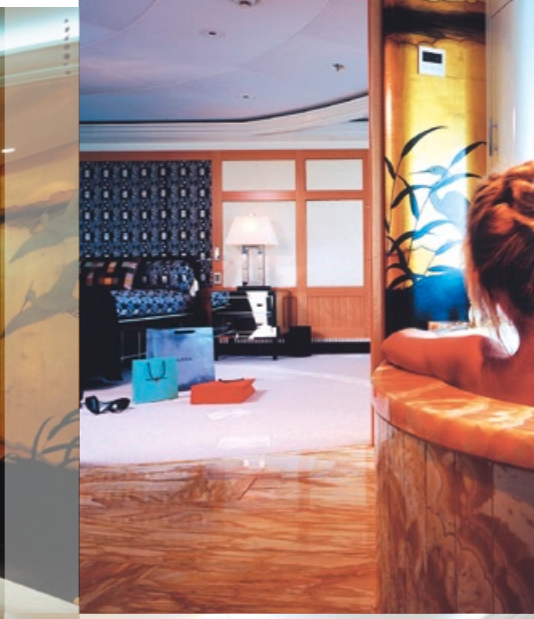
The main saloon and dining room, aft of the atrium are open plan, linked by a piano rotunda. The two rooms can be separated elegantly by rotating the rotunda screens to include the piano in the dining room or saloon.

The panoramic windows which lead to the exterior aft deck offer not only a great view but also lighten up the room enormously.

The central feature of the yacht was to be a multi-deck staircase and elevator running throughout the yacht.



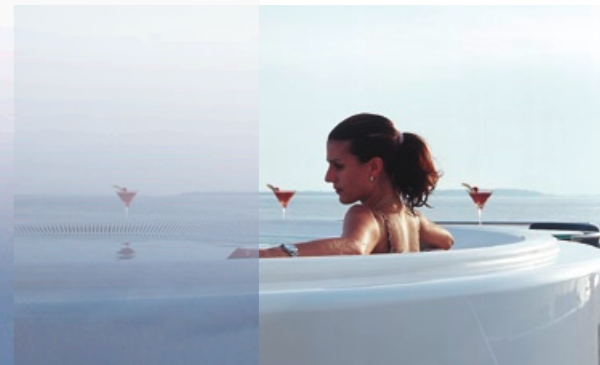
Aft of the atrium on the upper deck, is a full beam casual lounge. Although the ceiling heights throughout the yacht are generous, in the casual lounge they have been raised further into a barrel vaulted art deco skylight, illuminated with day light bulbs and dimmable to set the scene of the space. This feature creates a unique atmosphere and greatly increases the overall feeling of the scale of this spectacular yacht.



PHOENIX

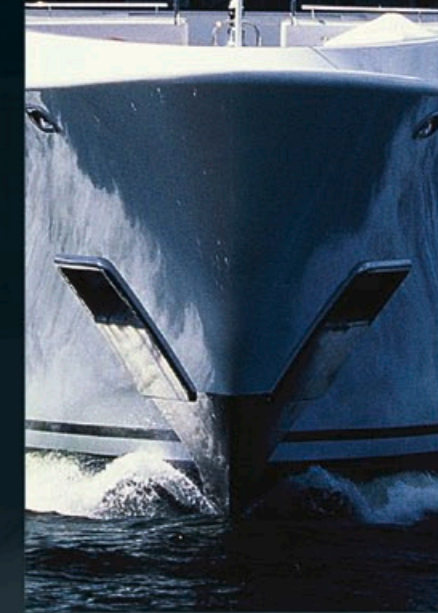
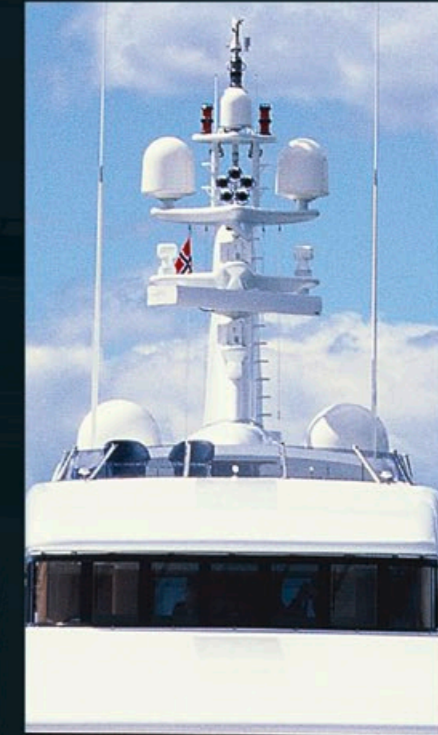
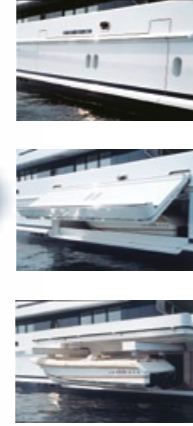
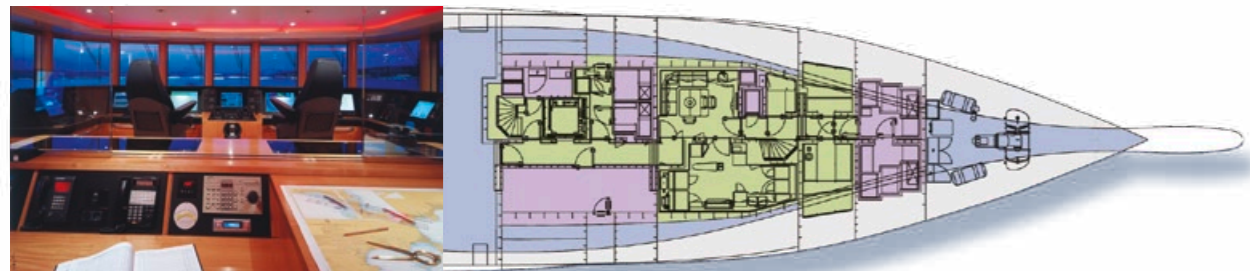
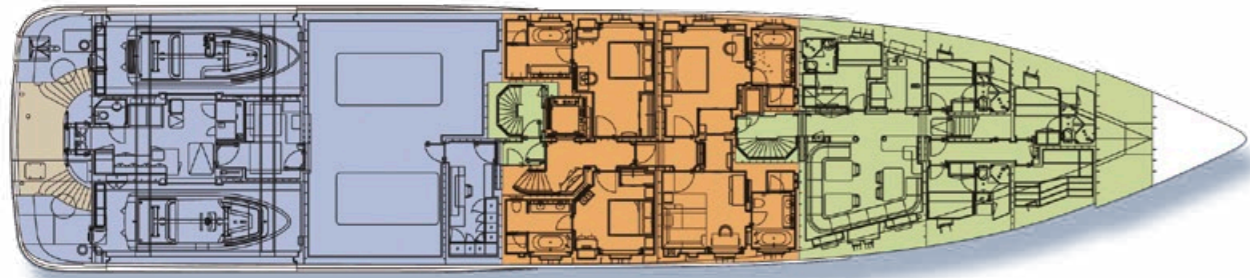
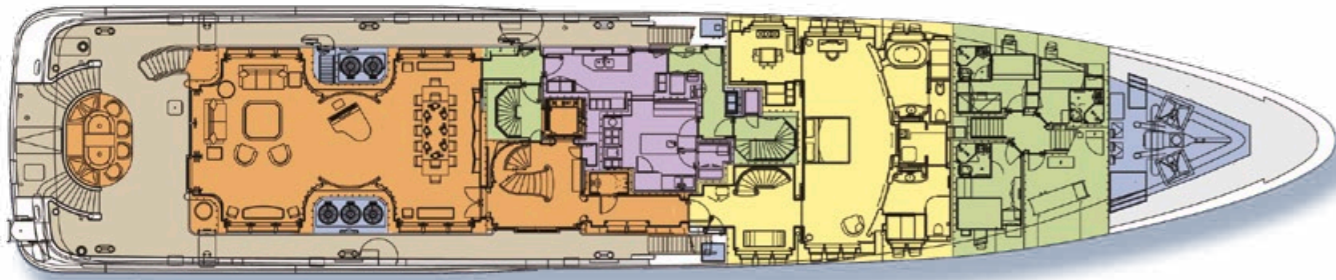
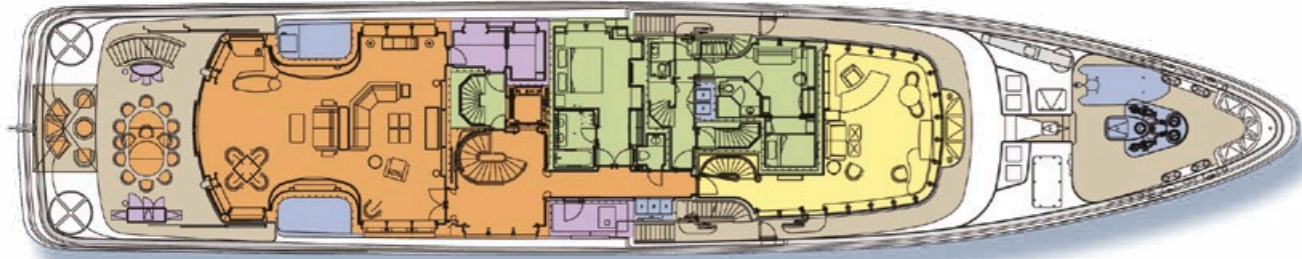
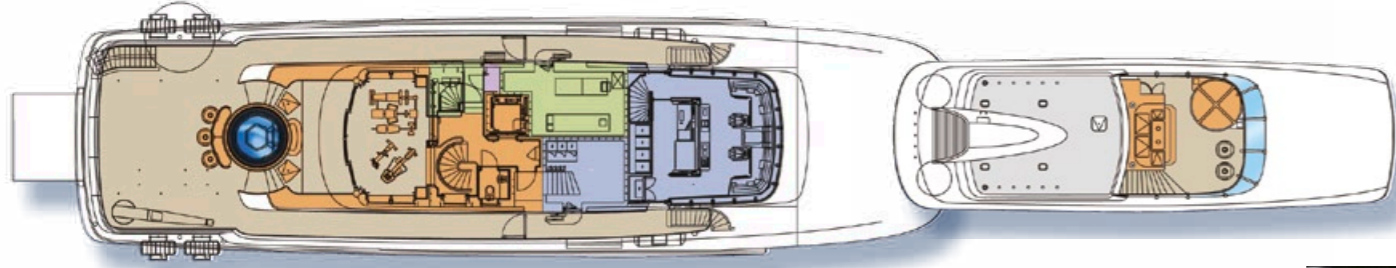


On the sundeck, a key feature is the gymnasium. This room has nearly full length windows on all sides and leads aft to the jacuzzi and sun deck. Guests can take a drink sitting at the bar at the jacuzzi's edge or rest in the shade on the sun loungers.



Specification MY "Phoenix"

Builder/Year	Lürssen Yachts, 2004	Auxiliary Engines/Generators	Caterpillar 2 x 340 kW, 1 x 260 kW
Designer exterior	Andrew Winch	Leroy Somer 2 x 350 kVA, 1 x 300 kVA	
Designer Interior	Andrew Winch	Emergency Engine/Generator	1 x Caterpillar 3306 DITA, 169 kW
Length overall	60,97 m / 200'	Classification	LRS 100A1, SSC YACHT
Length waterline	52,00 m / 170'6"		MONO LMC CCS G6 UMS
Beam	12,34 m / 40'5"	Fresh water maker	HEM 2 x 20.000 l/day
Construction material	hull: steel / superstructure: alu	Fresh water capacity	32.100 litres
Speed	16,0 knots max	Fuel capacity	185.000 litres
Range	7.700 nm at 13 knots	Accommodation	Owner/Guests: 6 cabins for 12 Crew: 8 cabins for 16
Main engines	2 x MTU 12 V 4000 M 70 1.740 kW / 2.364 hp each		



LÜRSEN



PHOENIX

Fr. Lürssen Werft GmbH & Co. KG
 Zum Alten Speicher 11 · D-28759 Bremen
 Phone +49 421 6604 166 · Fax +49 421 6604 170
 e-mail yachts@lurssen.com · www.lurssen.com