

FOR CHARTER

QTR

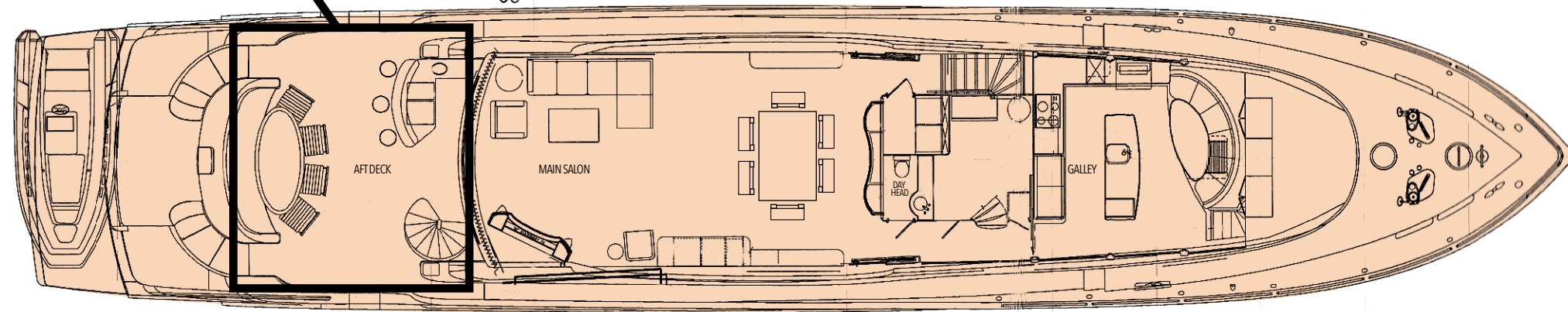


BUILDER	LAZZARA
BUILT / REFIT	2009 / 2021
BEAM	23' 1" (7.04M)
DRAFT	5' 6" (1.68M)
STATEROOMS	4
GUESTS	8
CREW	5
HULL MATERIAL	COMPOSITE
SPEED	15 KNOTS / 26
FLAG	USA

YACHT FOR CHARTER | QTR | 116' (35.36m) |



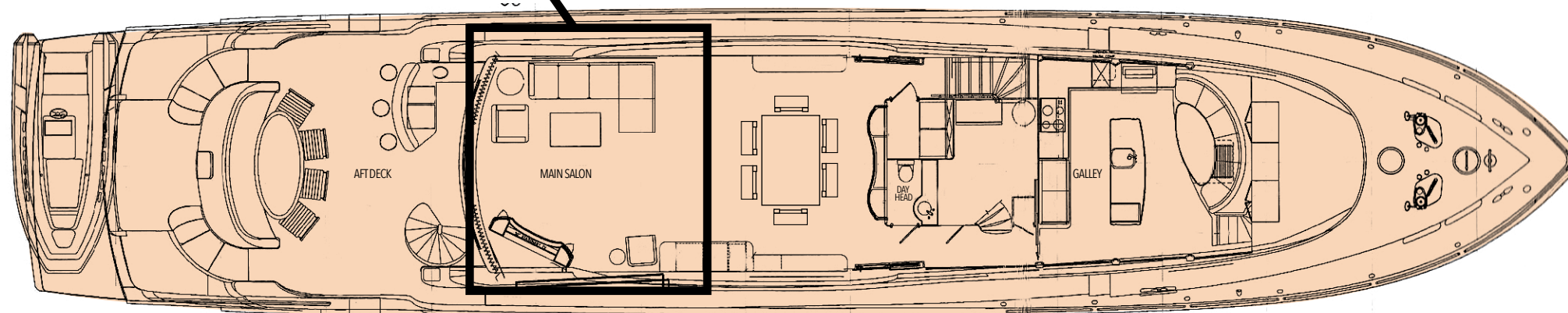
MAIN AFT DECK





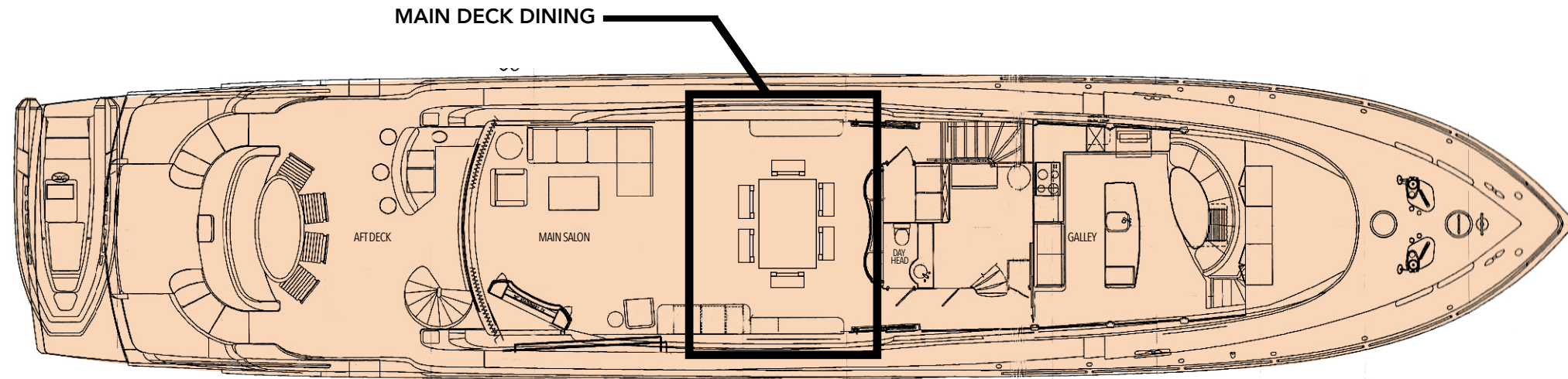


MAIN DECK SALON



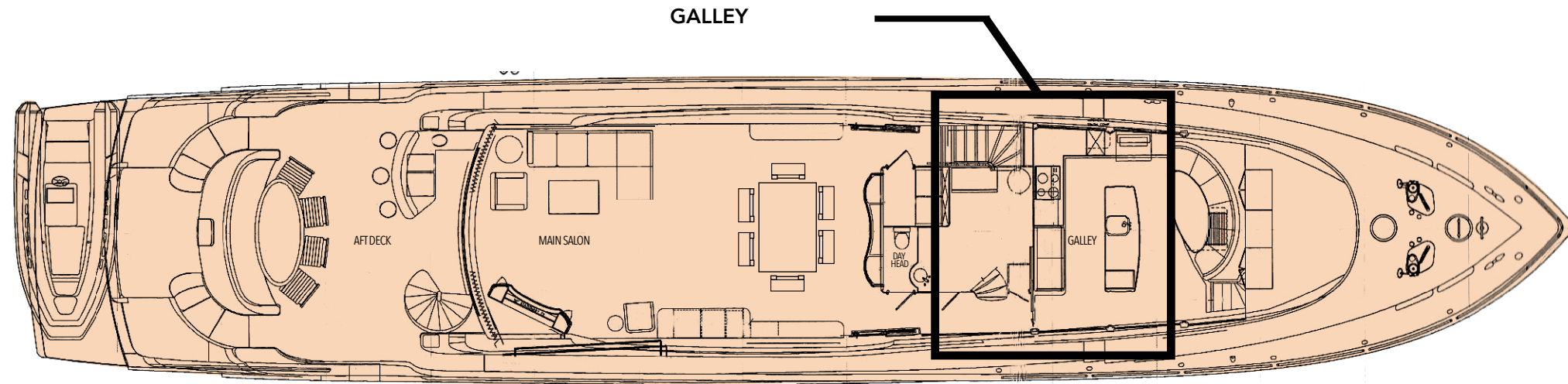






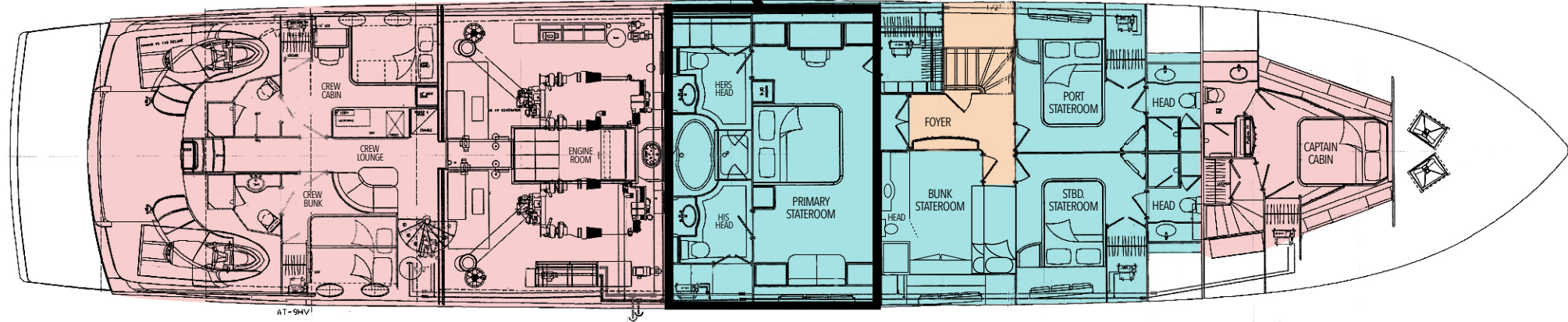








OWNER'S STATEROOM

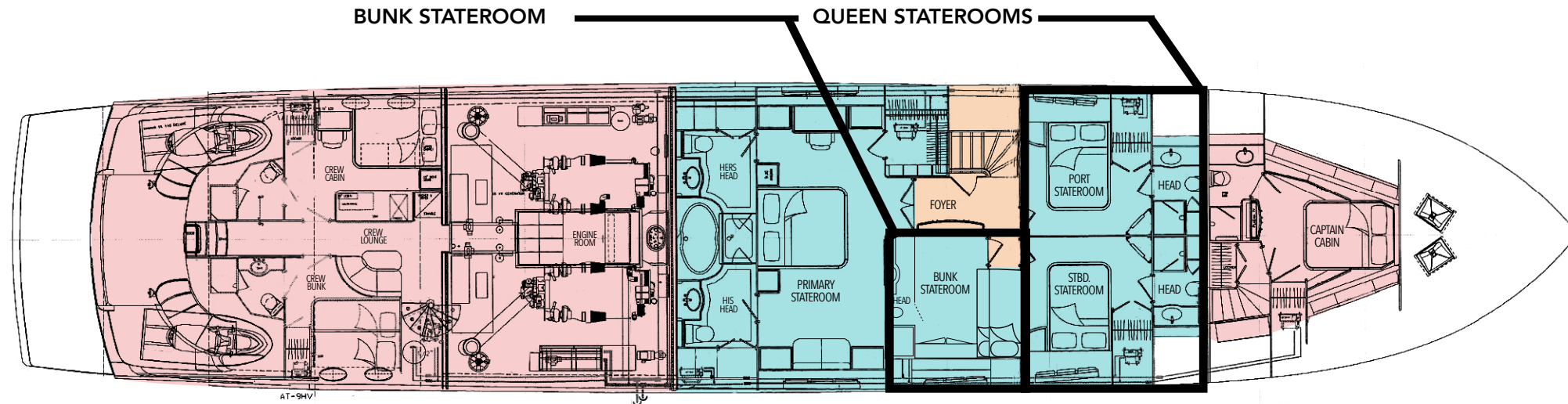


















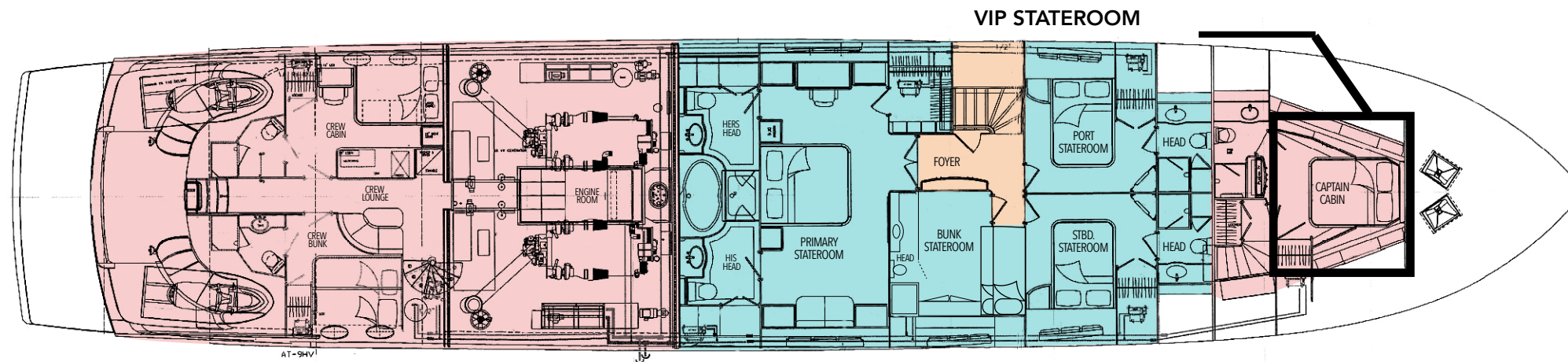


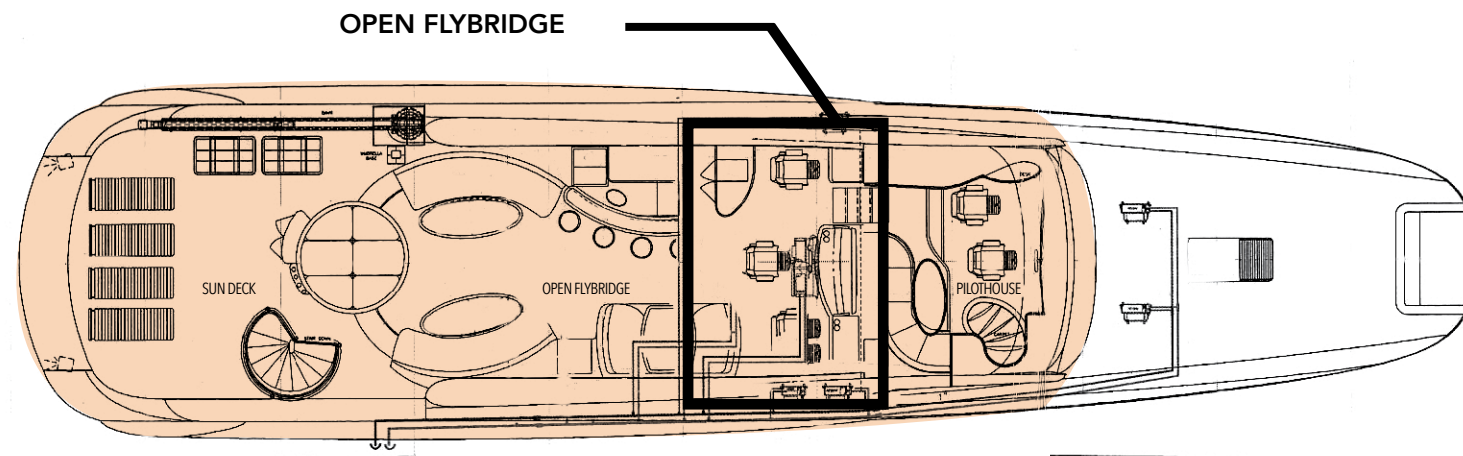




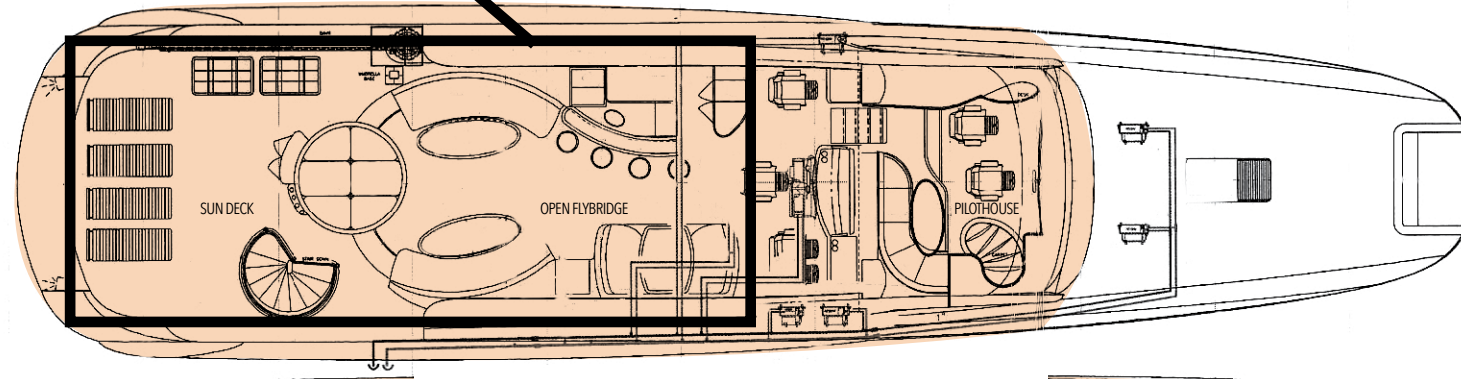








OPEN FLYBRIDGE & SUNDECK























YACHT FOR CHARTER | QTR | 116' (35.36m) |

SWIM PLATFORM



YACHT FOR CHARTER | QTR | 116' (35.36m) |



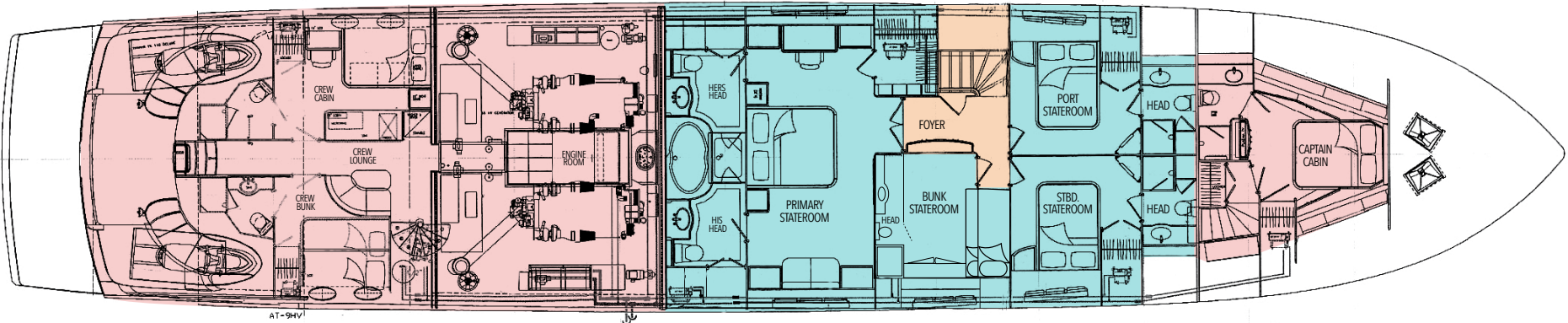
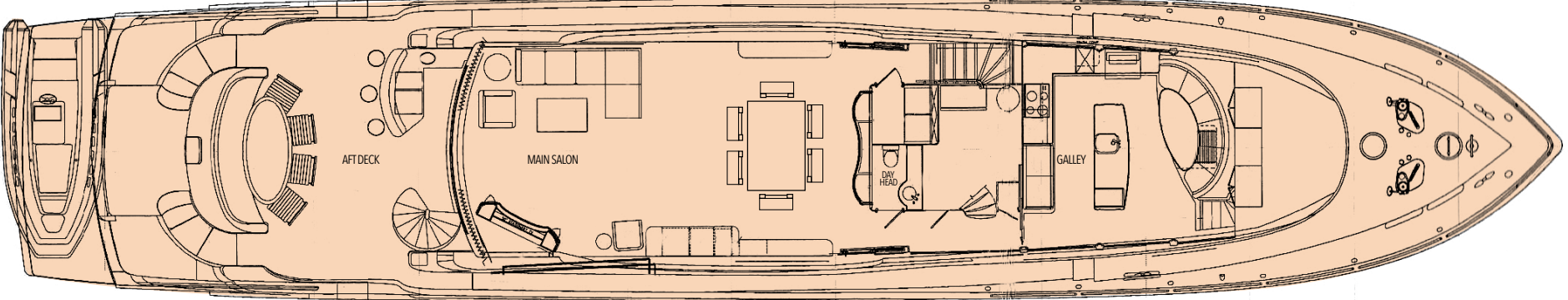
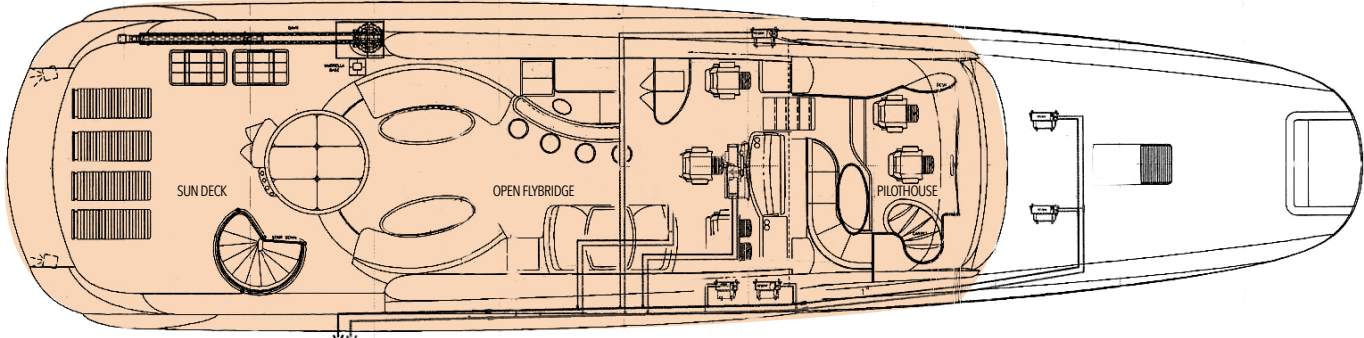
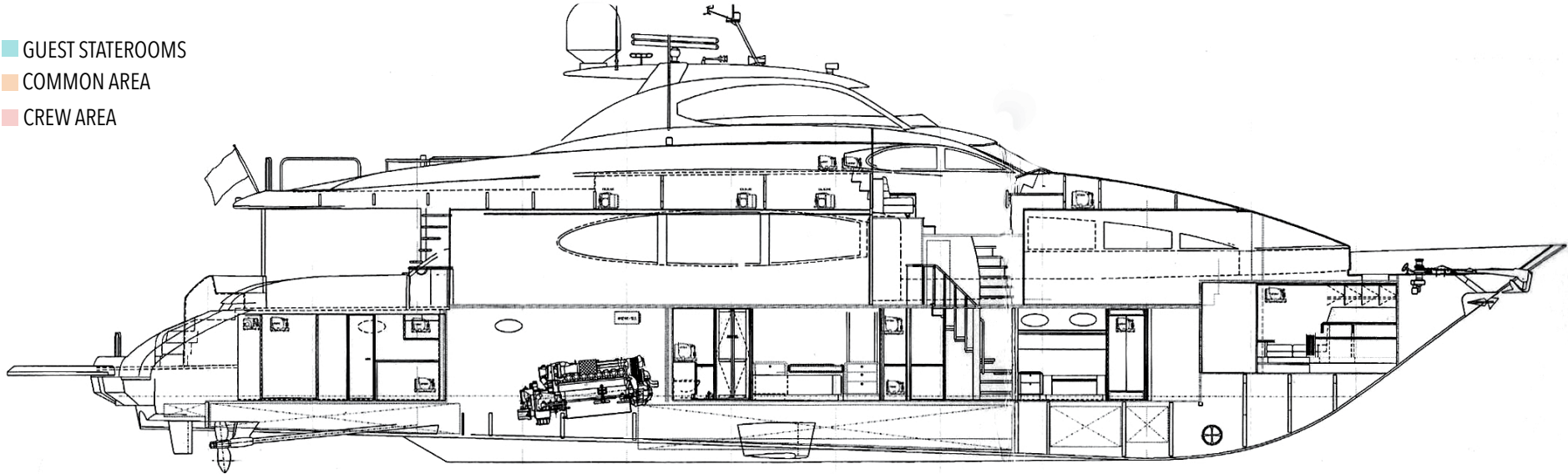






YACHT FOR CHARTER | QTR | 116' (35.36m) |

- GUEST STATEROOMS
- COMMON AREA
- CREW AREA



AT-94V1

## KEY FEATURES

---

Stabilizers at Anchor and Underway  
Retractable Swim Platform  
Jacuzzi on Sun Deck  
Great Charter Crew  
Large Tow Tender  
New Creston System & Plex Server  
Lots of Entertaining Space

## ACCOMMODATIONS

---

8 Guests in 4 Staterooms  
1 Master, 2 Double, 1 Twin  
Bed Configuration: 1 King, 2 Queen, 2 Single

## TENDERS & TOYS

---

2019 Scout 35' LXF with 3 x 300hp Yamaha's + outrigger's  
2 x 2018 Sea-Doo Sparks  
1 x Sea Bob  
2 x Stand Up Paddleboards (inflatable)  
2 x E-Foils  
2 x Kayaks (inflatable)  
Towable Disk (3 person)  
Snorkel Gear  
Fishing Gear  
Beach Chairs