



# Sea Class

155' 1" (47.25m) | Christensen | 1997

# Sea Class

## BASIC SPECIFICATIONS

---

### BUILDER

Christensen

### BEAM (ft/m)

28' (8.53m)

### CRUISING/MAX SPEED

13 / 16 Knots

### CREW

9

### RANGE

3500 nm

### LENGTH (ft/m)

155' 1" (47.25m)

### DRAFT (ft/m)

8' 1" (2.44m)

### FUEL CONSUMPTION

100 US Gall/Hr

### ACCOMMODATION

12 guests in 6 cabins

### INTERIOR DESIGNER

Glade Johnson Design, Inc.

### BUILT/REFIT

1997 / 2023

### GROSS TONNAGE

460 GT

### ENGINES

2 x Deutz 2200 hp

### ARRANGEMENTS

3 Double, 3 Convertible

# Sea Class

## KEY FEATURES

---

- › ADVENTURER'S PARADISE WITH WATER TOYS GALORE AND AMAZING BEACH SET UP EQUIPMENT
- › ON DECK MASTER EN SUITE STATEROOM
- › CONVERTIBLE CABINS
- › 37' EVERGLADES TOWED TENDER WITH 2 X 350HP ENGINES
- › VARIETY OF DINING OPTIONS
- › ZERO SPEED STABILIZERS

# Sea Class

## WATER TOYS

---

- › - 37' EVERGLADES TOWED TENDER - WITH SEAKEEPER STABILIZATION
- › - 2 X 2018 SEABOBS FS2
- › - 1 X KAYAK
- › - TOWABLES, INFLATABLES, WAKEBOARD, WATER SKIS
- › - AMAZING BEACH SET UP EQUIPMENT
- › - 15' SEALVER JET TENDER RIB
- › - 2 X LIFT E-FOILS
- › - 27' FUNAIR WATERSLIDE
- › - 6 X COMPLETE SETS OF SCUBA PRO DIVE GEAR
- › - 4 X SEA-DOO GTR WAVERUNNERS
- › - 2 X STAND UP PADDLE BOARDS
- › - 30' SWIMMING POOL / BUNNY PAD
- › - FULL QUIVER OF LATEST KITE SURFING GEAR

SEA CLASS













**FUN AIR**







# SEA CLASS

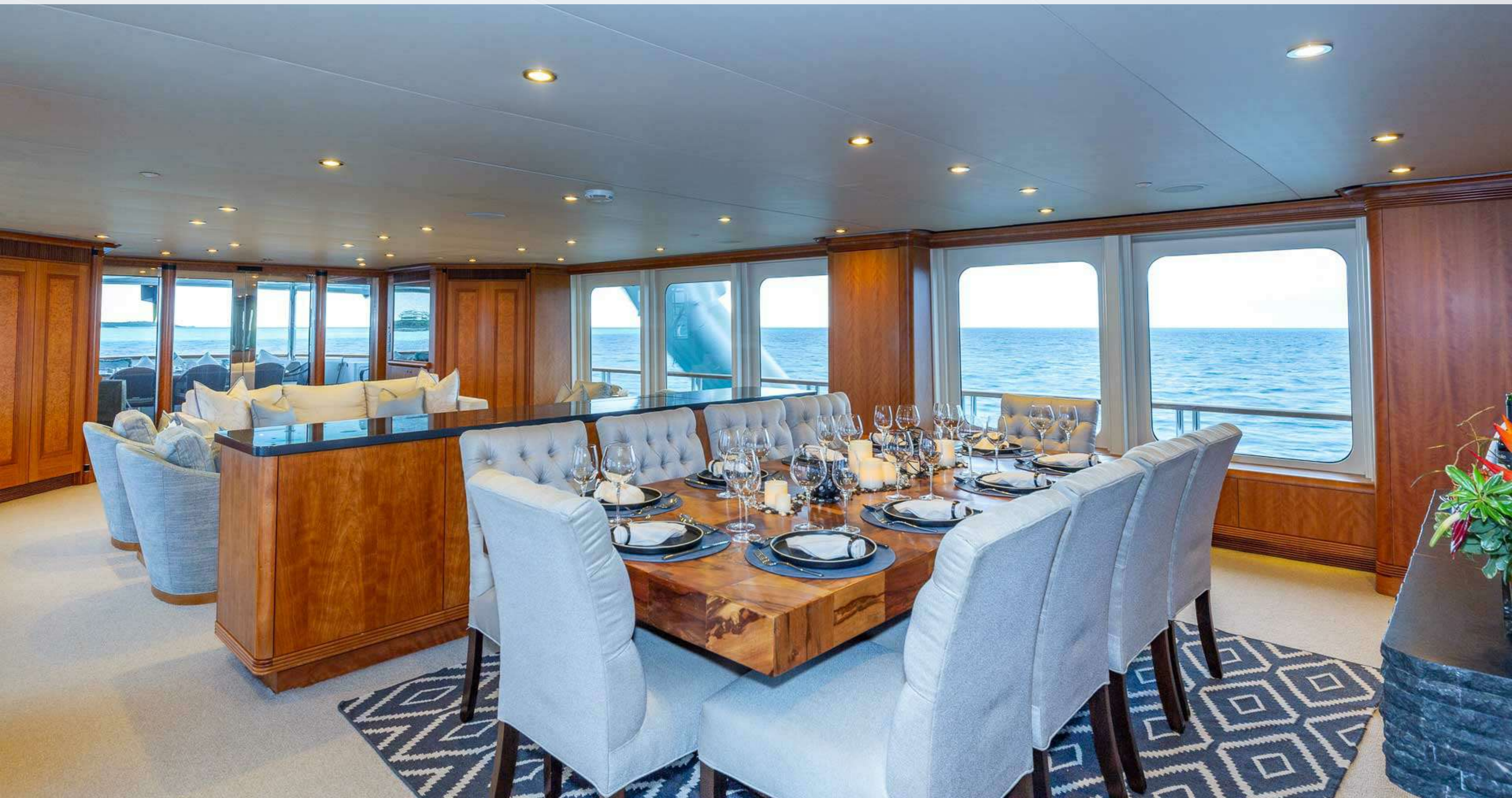




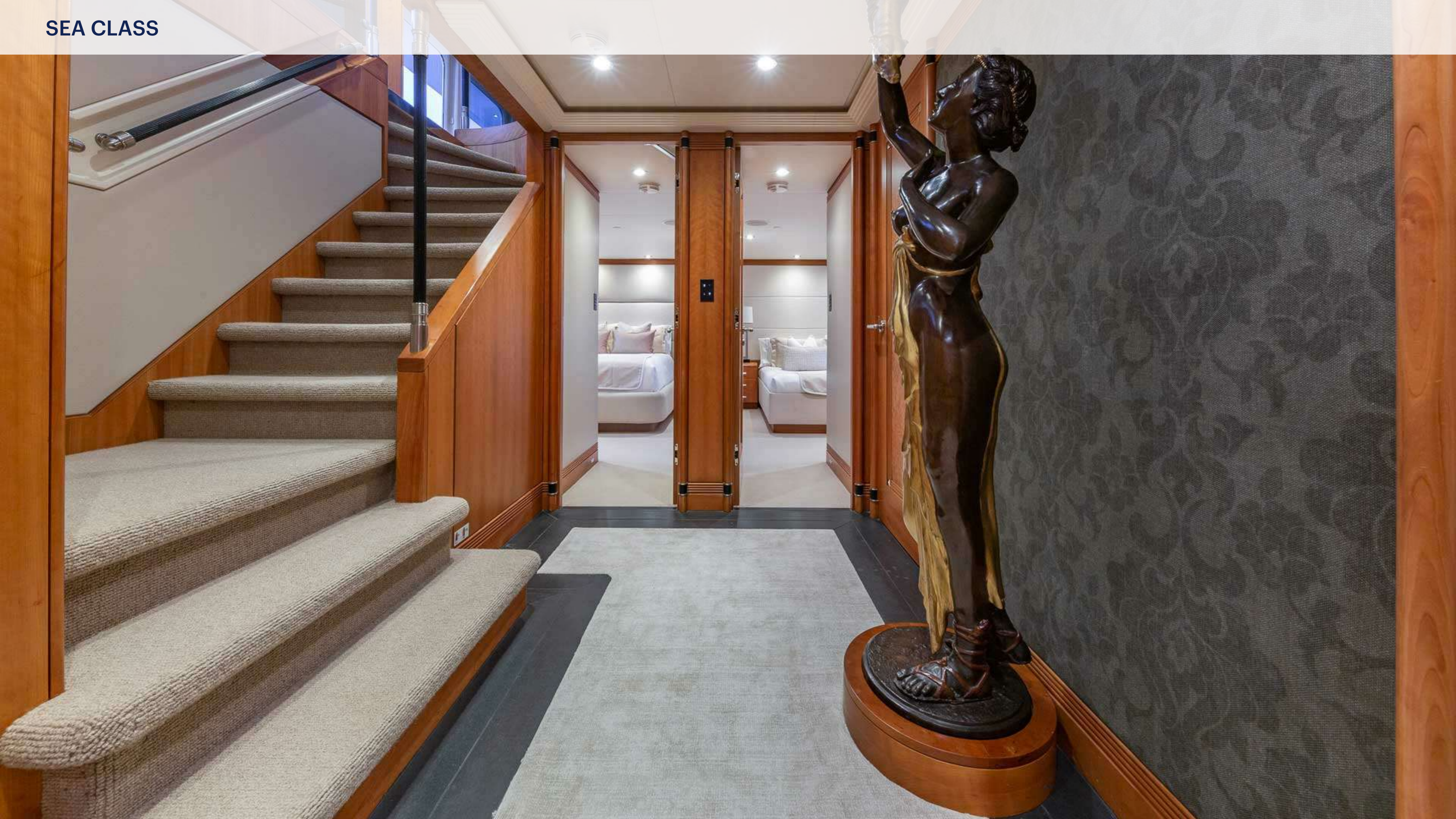




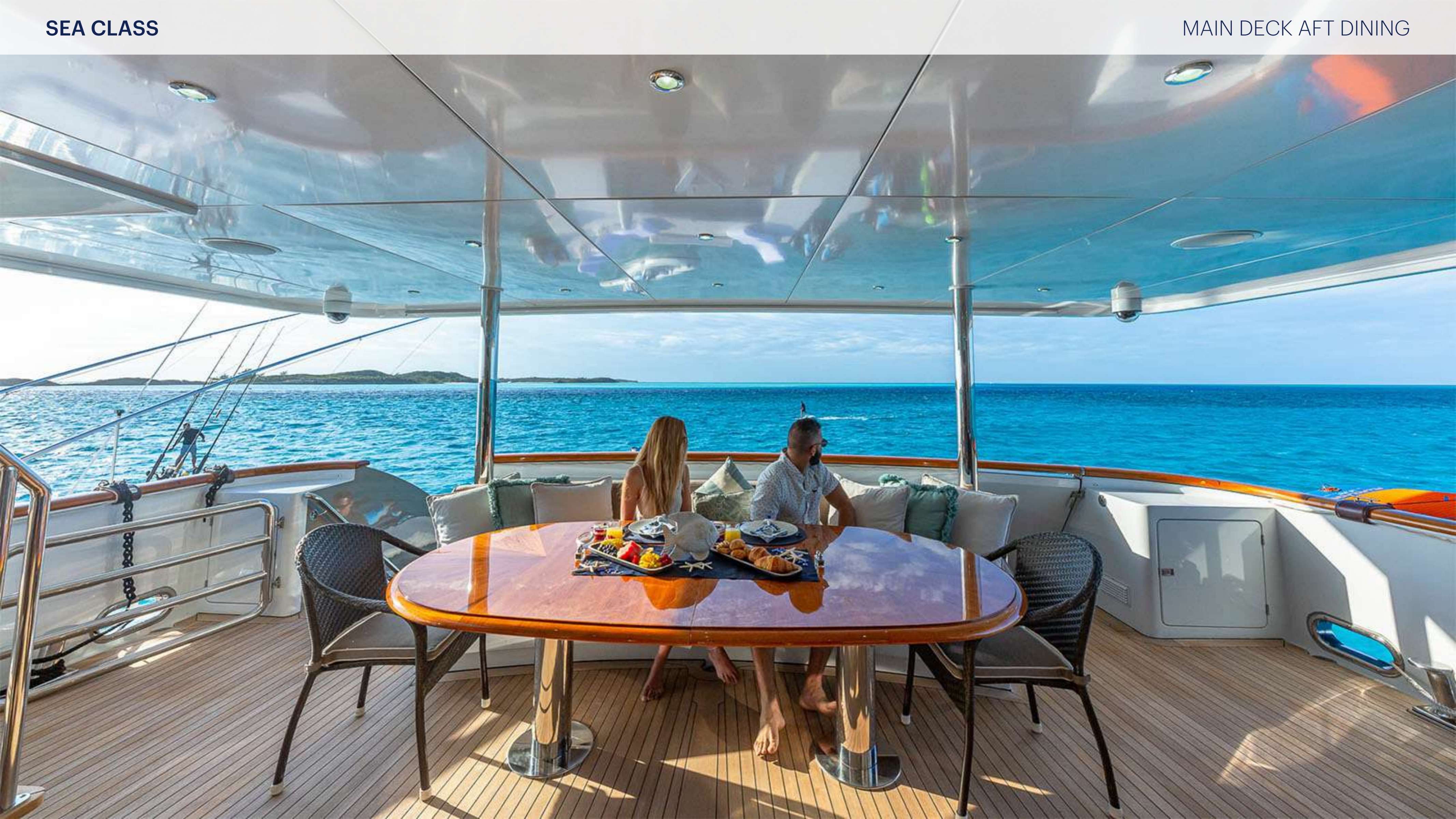










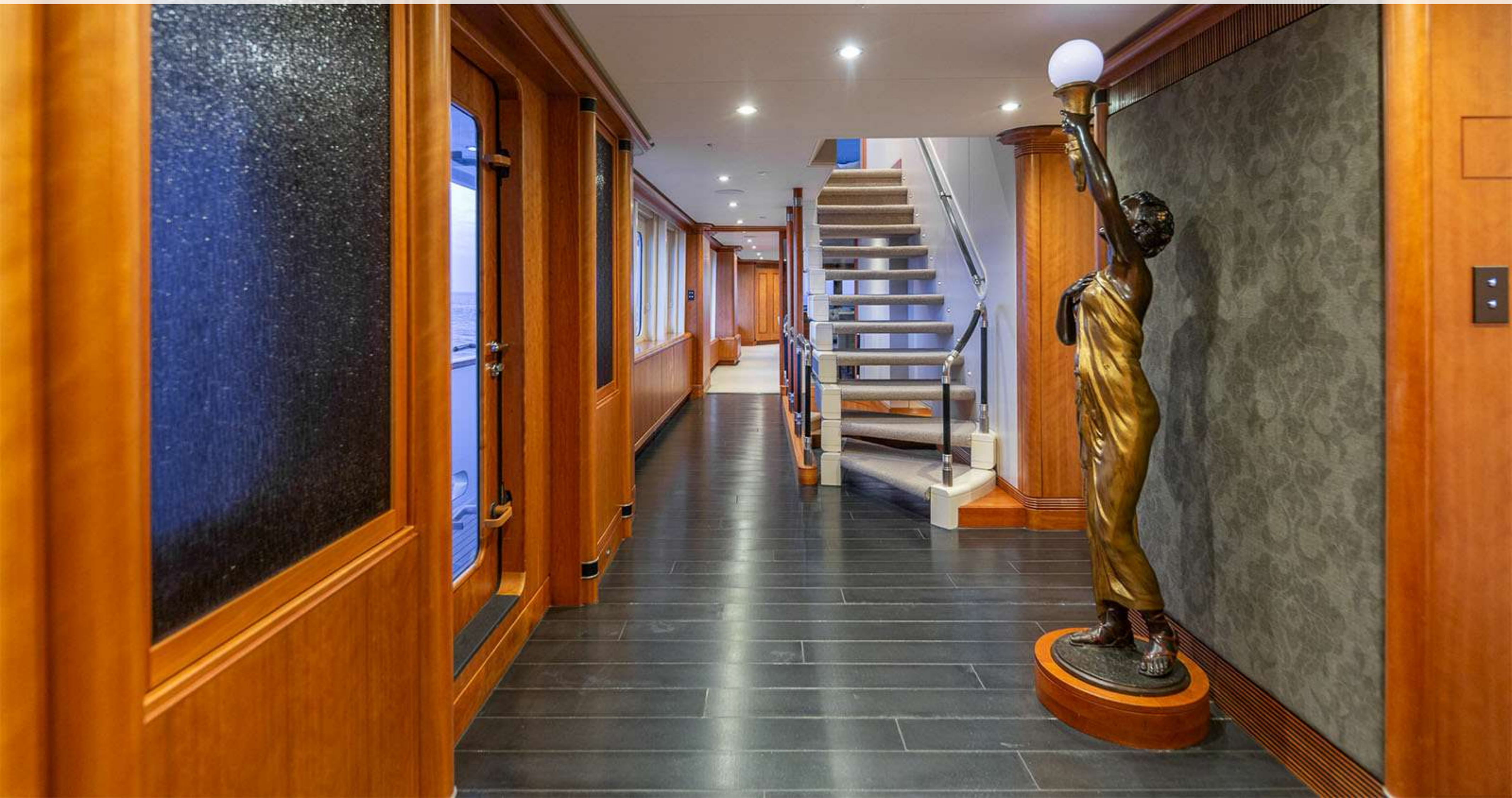












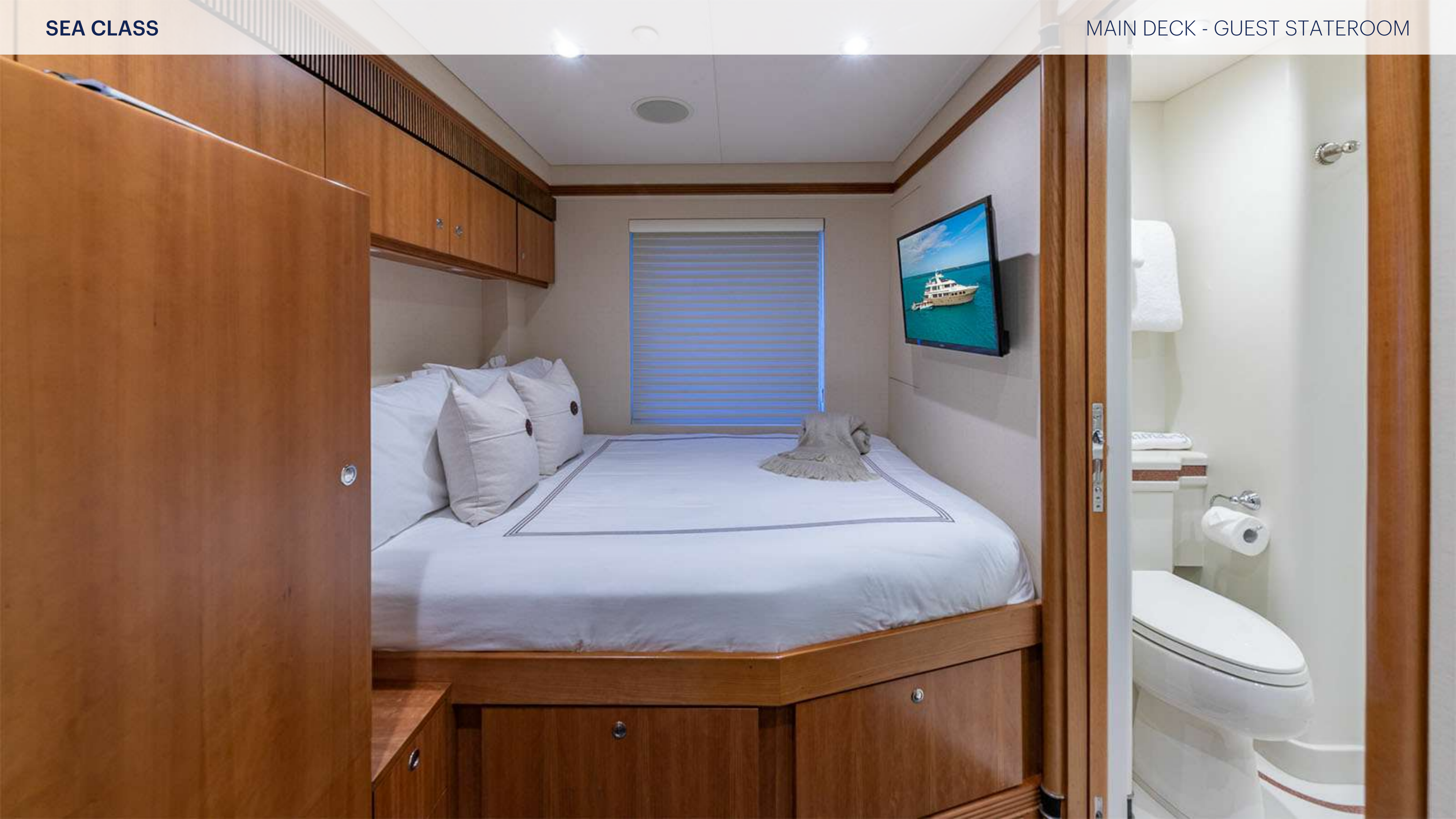






SEA CLASS



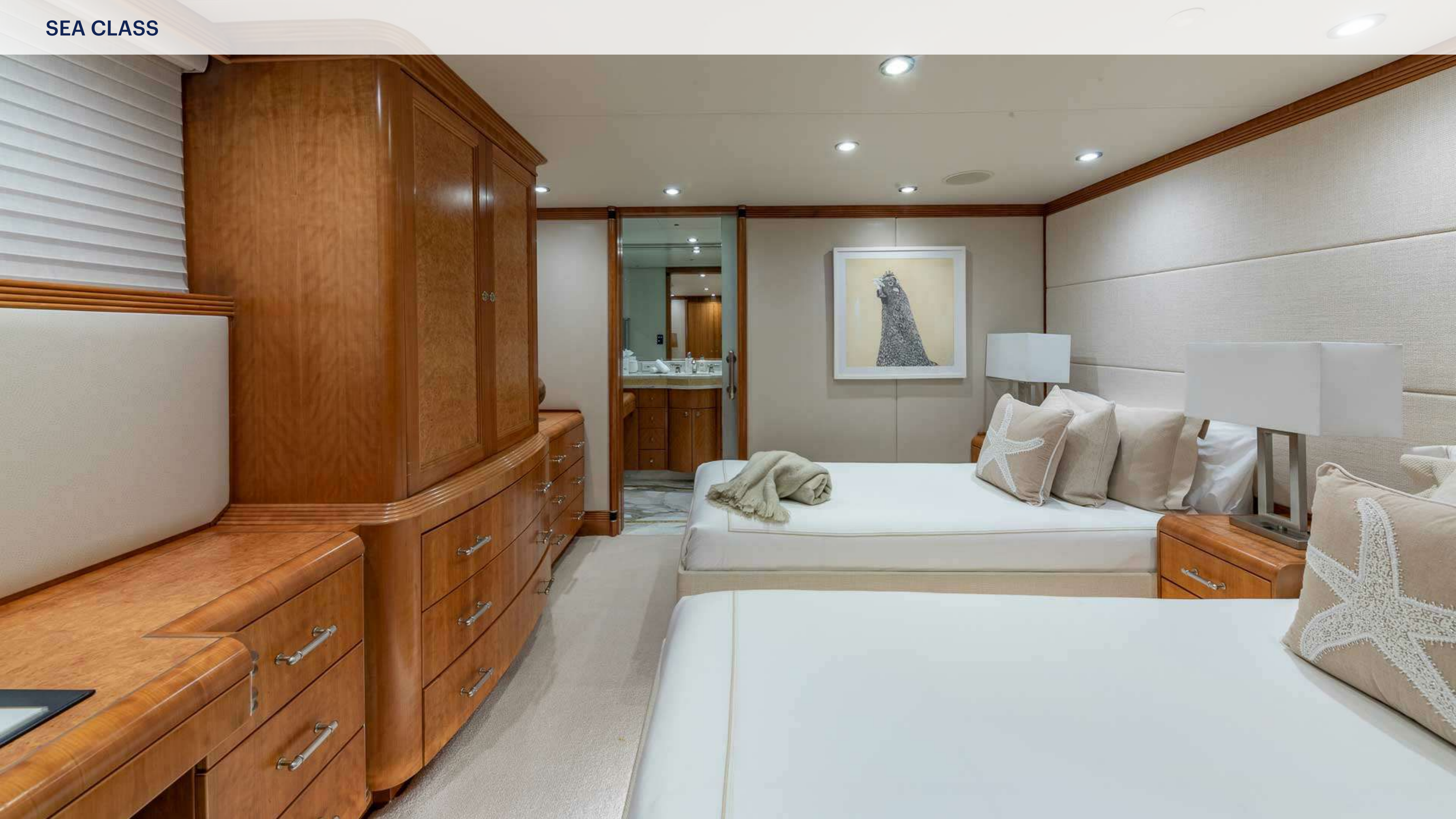






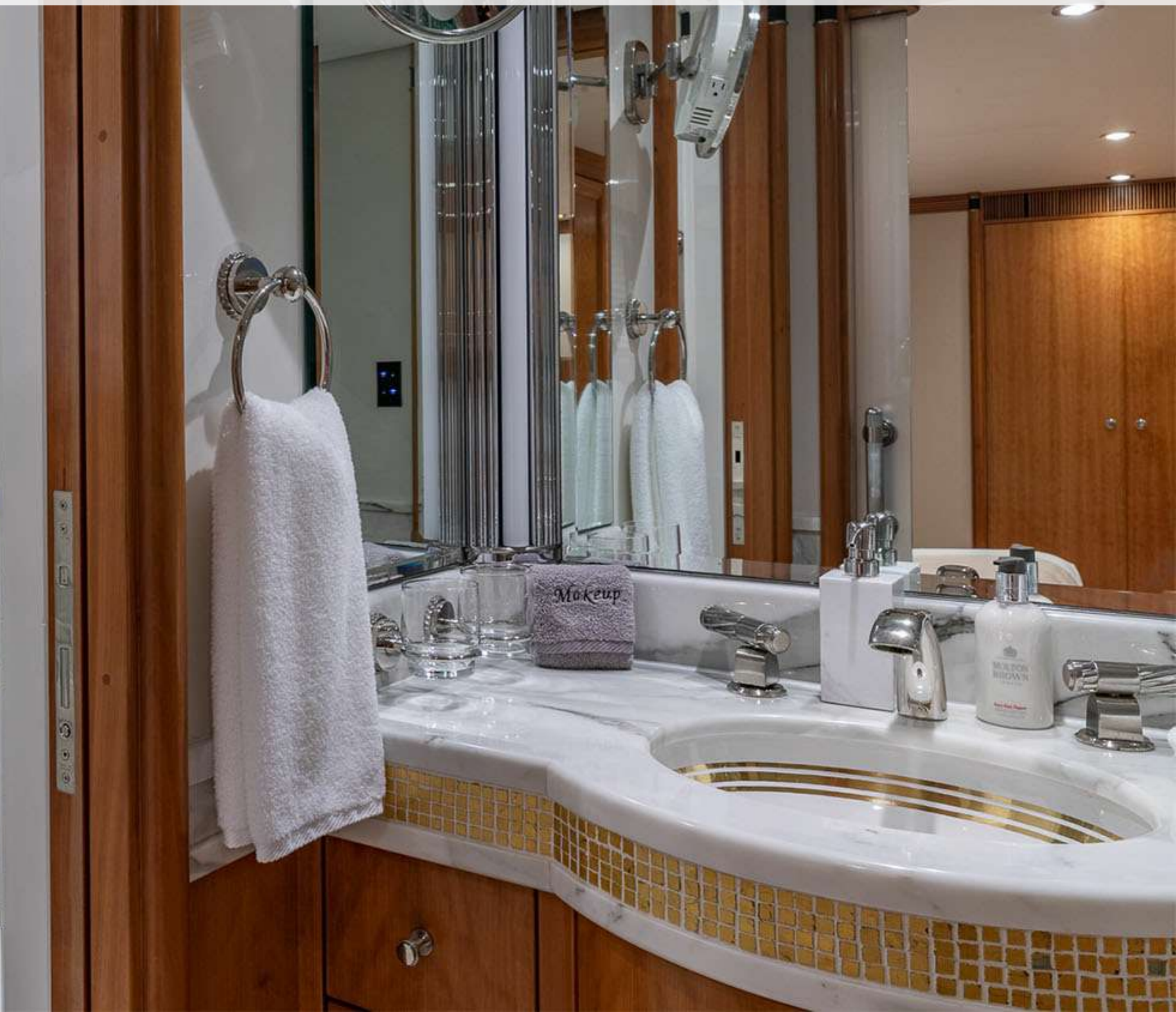




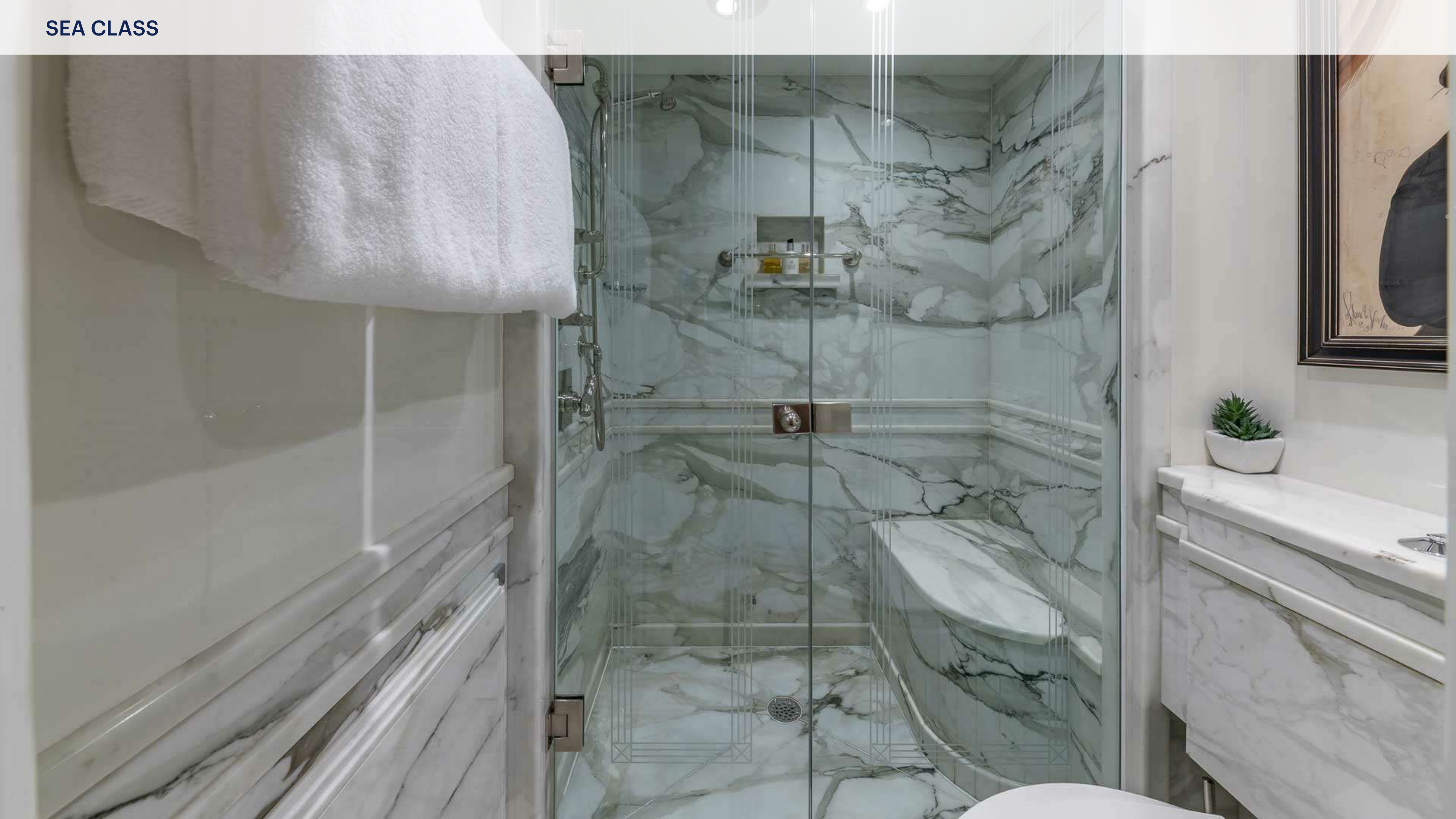


SEA CLASS





SEA CLASS



# SEA CLASS













SEA CLASS

SUN DECK















SEA CLASS

