





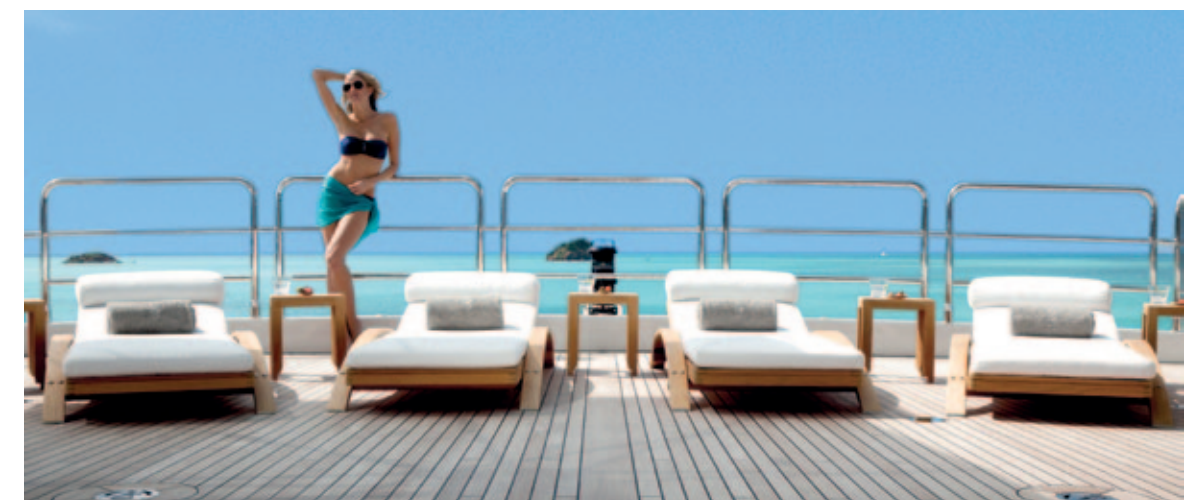
Irresistible

SEANNA is a breathtaking new 65 metre (213ft) displacement yacht, designed and built by Italian masters, Benetti. Her head-turning good looks and charismatic interior styling by Redman Whiteley Dixon & Susan Young Interiors create an awe-inspiring presence on the water.





Throughout her meticulously appointed decks, SEANNA exudes quality and craftsmanship.





Stunning good looks, state-of-the-art technologies and zero speed stabilisers. SEANNA offers fast, smooth cruising in the lap of luxury.



Sun deck bar and jacuzzi.



The jacuzzi, bar and seating on the sun deck.



Unwind

Outside, her large and comprehensively specified deck areas provide the space to relax, play, entertain and enjoy.





The gymnasium has a hinged wall allowing a choice of indoor or outdoor workouts. Afterwards, cool off in the beach club.



The beach club.



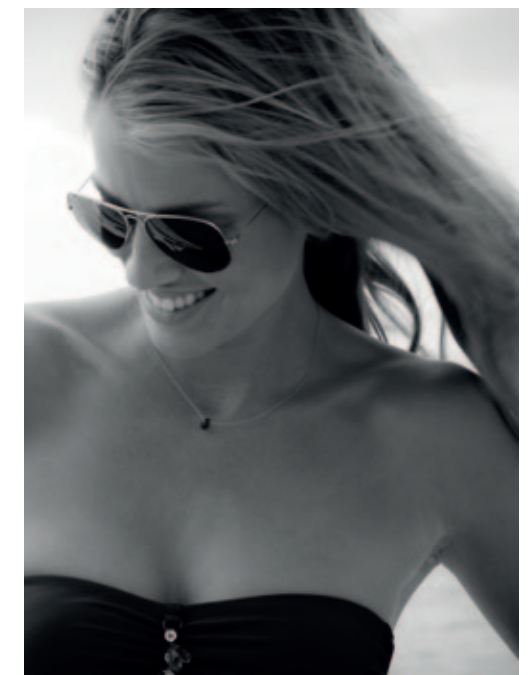
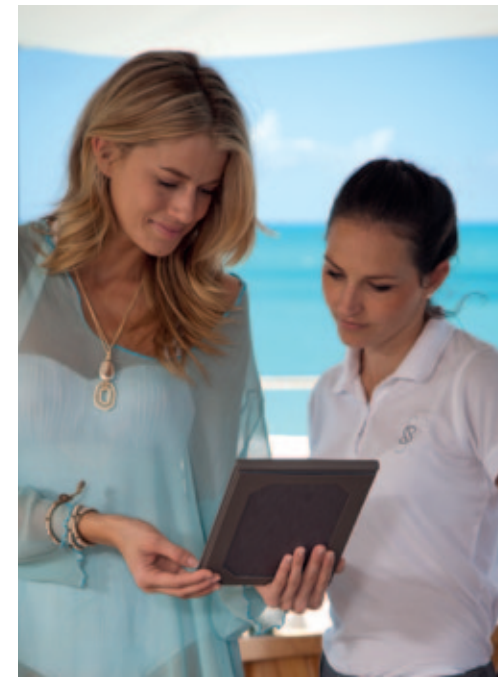
Starboard side deck.



Luncheon on the upper deck.

Entertaining

It's the Owner's fastidious attention to detail throughout the yacht that really makes SEANNA outstanding. Expect the same exacting standards in the exquisitely prepared food and well-stocked cellar.





Upper deck saloon.



Fine dining on the main deck.

Entertaining inside is just as elegant. An apéritif at the bar on the upper deck before dinner on the main deck. After dinner, take coffee in the library by the working fire place.



The sheltered lounge on the sun deck is the perfect spot for breakfast. At night, this space opens out to create the ideal party venue.



Upper deck saloon.

Relax

Inside, modern leather and elegant Italian walnut cabinetry highlighted with nickel inlays, together with bespoke furniture and specially commissioned artwork give her expansive accommodation great warmth and individuality.



The foyer on the main deck.



The main saloon can convert to a cinema.



The treatment rooms on the main deck.



The library on the main deck.

Relaxation is easy aboard SEANNA with her dedicated massage and treatment rooms and cosy library.

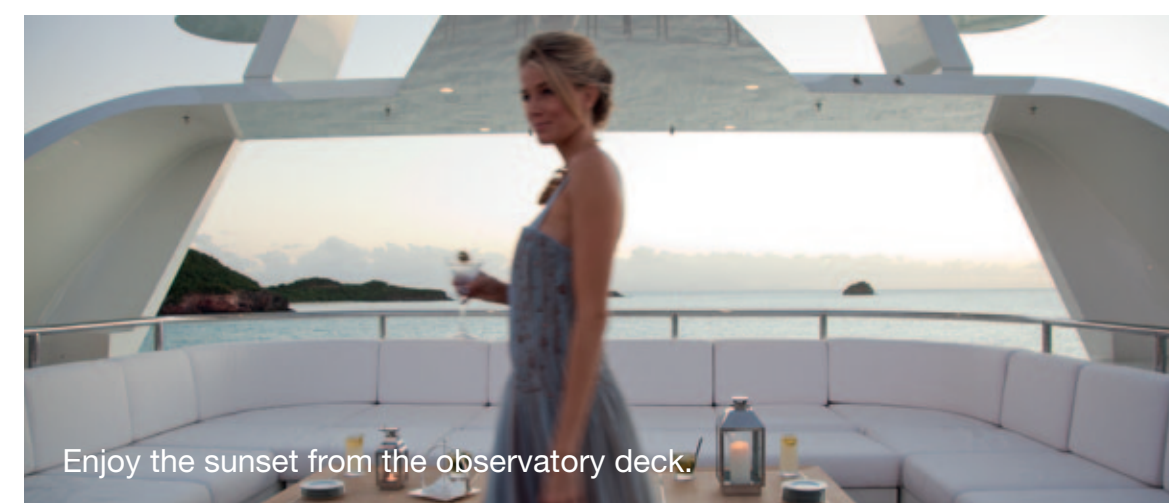


Afternoon tea on the upper deck aft.



Cocktails at the bar on the main deck.

Whether you choose the main deck, upper deck or observatory deck – the seating is sociable and comfortable with clear, uncluttered views.



Enjoy the sunset from the observatory deck.



The master suite.

Sleep Well

At the heart of the yacht, the main deck is home to the magnificent master suite with two separate bathrooms and hidden TV screens in the bedroom and study.



The study in the master suite.



The VIP cabin on the upper deck.



Tenders & Toys

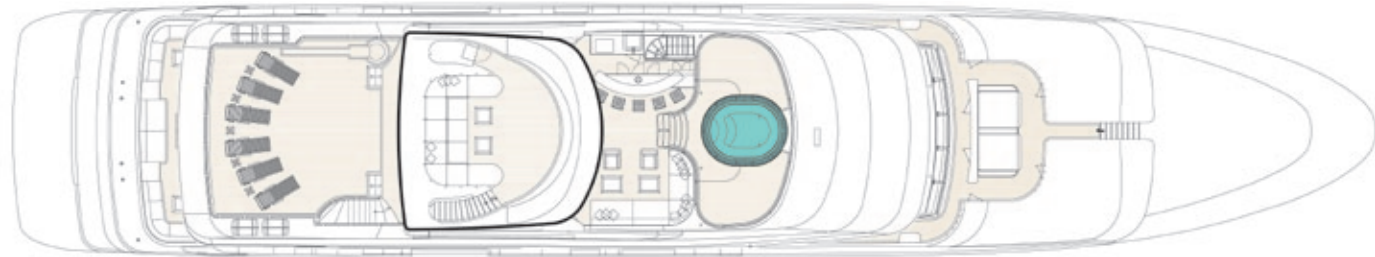
From a beautiful, custom-built wooden tender to water skiing equipment, canoes and fishing gear, SEANNA has all the toys to meet the demands of any watersports enthusiast.



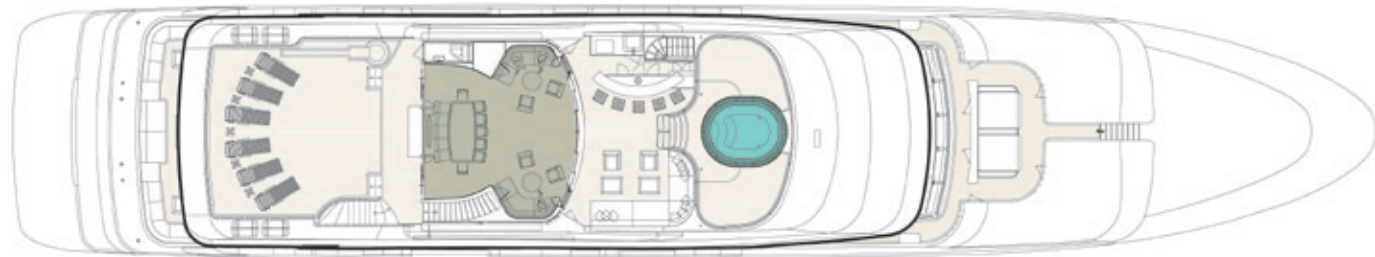
Explore on the StanCraft tender.

Specifications

OBSERVATORY DECK



SUN DECK



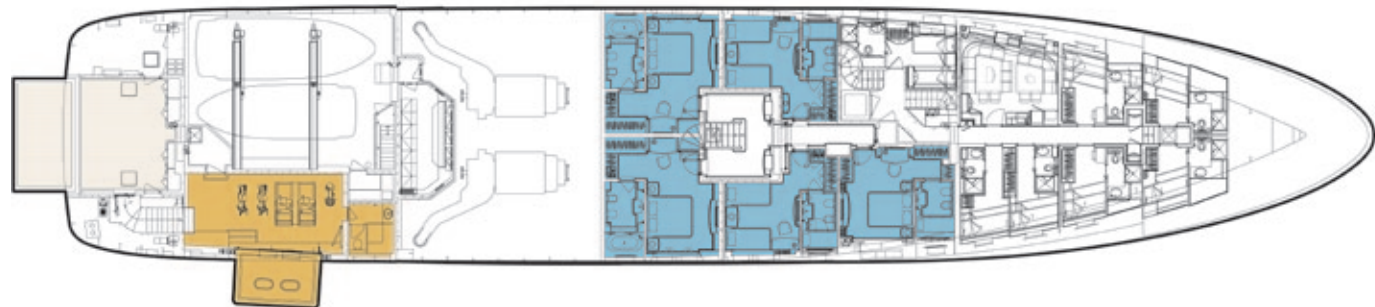
UPPER DECK (BRIDGE)



MAIN DECK



LOWER DECK



TYPE

Twin Screw Diesel Displacement Yacht

FLAG

Isle of Man

DIMENSIONS

Length Overall 64.5m (211.6ft)

Beam 12.1m (39.7ft)

Draft 3.5m (11.5ft)

TONNAGE

Gross 1,426

YEAR BUILT

2011

BUILDER

Benetti, Italy

EXTERIOR DESIGN

Benetti

INTERIOR DESIGN

Redman Whiteley Dixon

Susan Young Interiors

OWNER'S PROJECT MANAGEMENT

BURGESS

CONSTRUCTION

Welded steel hull, aluminium alloy superstructure

CLASSIFICATION

Built to Lloyds Register Classification * 100 A1 SSC Yacht

Mono, G6 * LMC, UMS; MCA (LY2) compliant

MAIN ENGINES

2 x Caterpillar 3516B, 1686kW at 1,600 rpm

SPEEDS

Cruising speed 15 knots

Maximum speed 17 knots

RANGE AT 12 KNOTS

5,000 nautical miles

GENERATORS

2 x 200kW Caterpillar C9 – 1 x 350kW C18

STABILISERS

Naiad zero speed (2 pairs)

AIR CONDITIONING

Heinen & Hopman

COMMUNICATIONS

VSAT, Inmarsat Fleet-Broadband, GSM, VOIP

ENTERTAINMENT

Sky/Direct TV, BEST on-demand video/music throughout the vessel including the master suite, all guest cabins, dining room, cinema, gym and exterior decks. Karaoke machine, X-Box, Wii. Club Seanna disco.

GYM

1 x treadmill (Life Fitness)

1 x cross-trainer (Technogym, Excite + range)

1 x Cross-over 700 (Technogym, Excite + range)

1 x exercise bike

1 x bench press and 120Kg of mixed plate weights

Numerous fixed hand weights

MASSAGE ROOM

Massage room equipped with 2 private beds. Massage therapist available on request.

JACUZZI

Large 12 person jacuzzi

ACCOMMODATION

Guests: 12 (5 double, 2 twin, as required)

UPPER DECK

1 VIP cabin with en suite shower room

MAIN DECK

Master suite with his and hers bathrooms and dressing rooms, steam shower, and jacuzzi bath, lounge/day area and study.

LOWER DECK

3 double cabins, 2 with en suite bath and shower and 1 with en suite shower only. 2 twin cabins each with en suite shower.

TENDERS & TOYS

1 x Novurania 7.5 metre with 220hp engine

1 x StanCraft tender 8.5 metre with 350hp engine

2 x Yamaha VX Cruiser waverunners

Waterskis and wakeboards

2 x sea kayaks

2 x stand-up paddle boards

1 x inflatable trampoline

1 x inflatable banana

Selection of inflatable towed water toys

Selection of fishing equipment

Snorkelling equipment and a variety of wetsuit sizes.