

SILVER FAST

SILVER  YACHTS

EO
ESPEN ØINO
INTERNATIONAL

PHOTOS BY GUILLAUME PLISSON



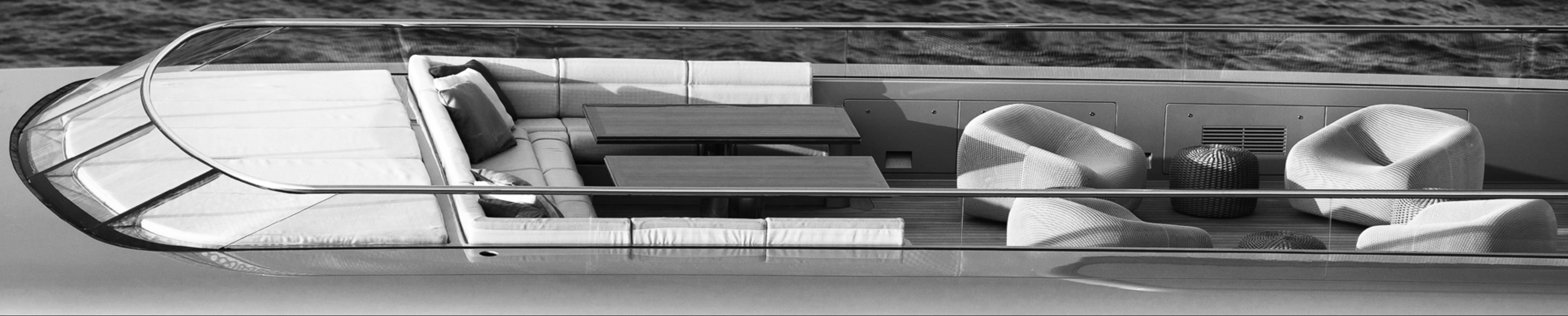


SILVER FAST
GEORGETOWN

SUN DECK











SILVER FAST



OWNERS DECK







LAND ROVER EXPERIENCE TOUR
COOLHOTELS AMERICA



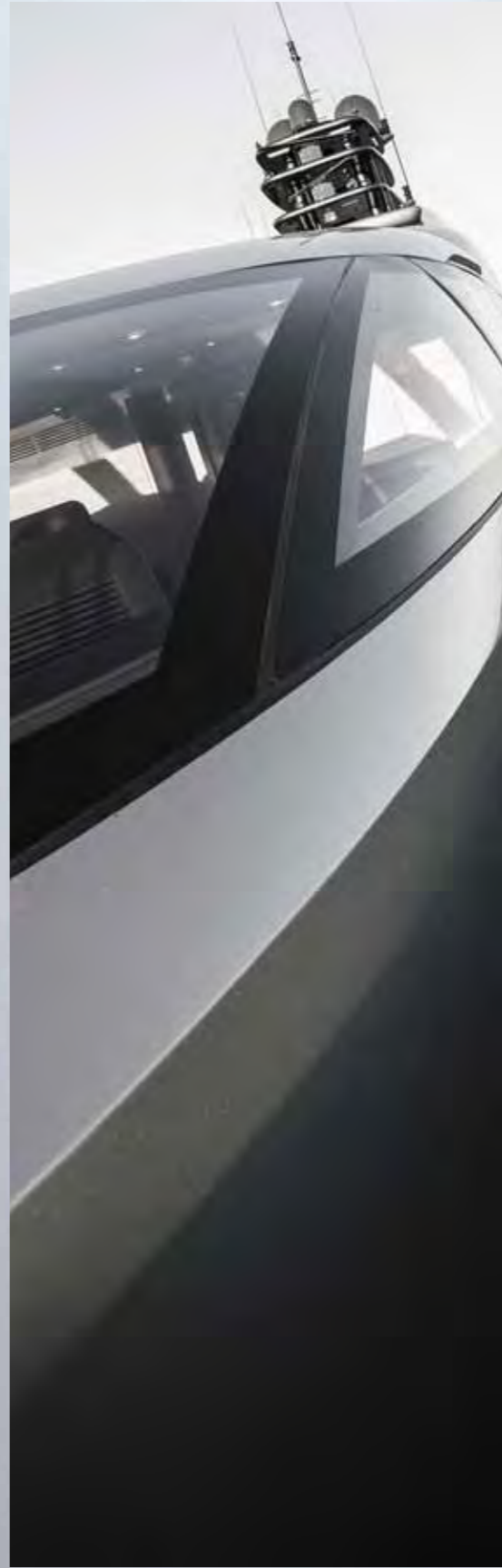












BRIDGE DECK









MAIN DECK











SILVER FAST



SILVER YACHTS











SILVER YACHTS

INDUSTRIOUS



MARTIN SCHOELLER PORTRAITS

INDUSTRIOUS

INDUSTRIOUS

THE WILD HORSES OF SABLE ISLAND

THE WILD HORSES OF SABLE ISLAND

INDUSTRIOUS

CELEBRITY PETS

NOMAD

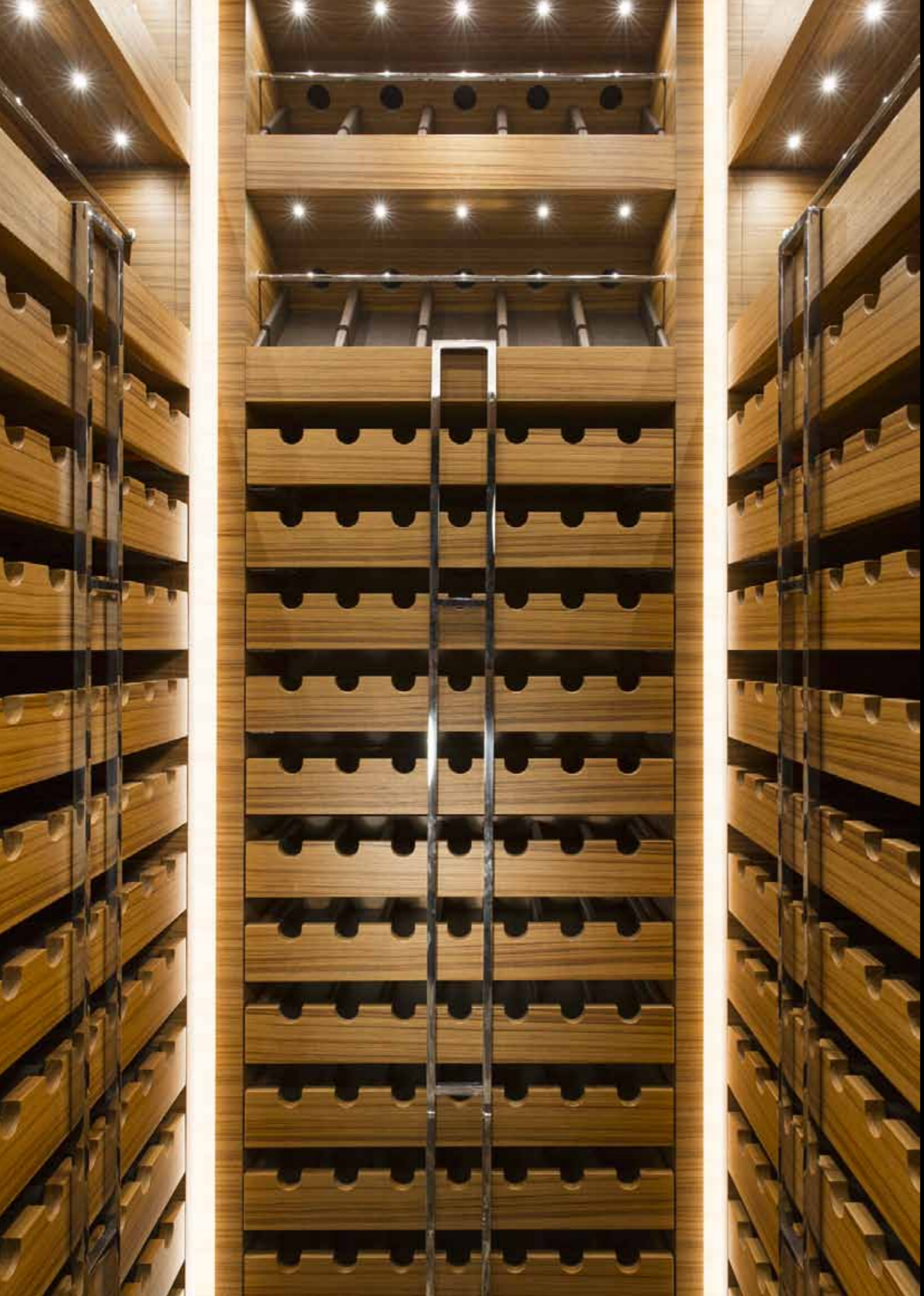
INDUSTRIOUS

SEQUENTIAL YOURS, KUBOTZ RUITT



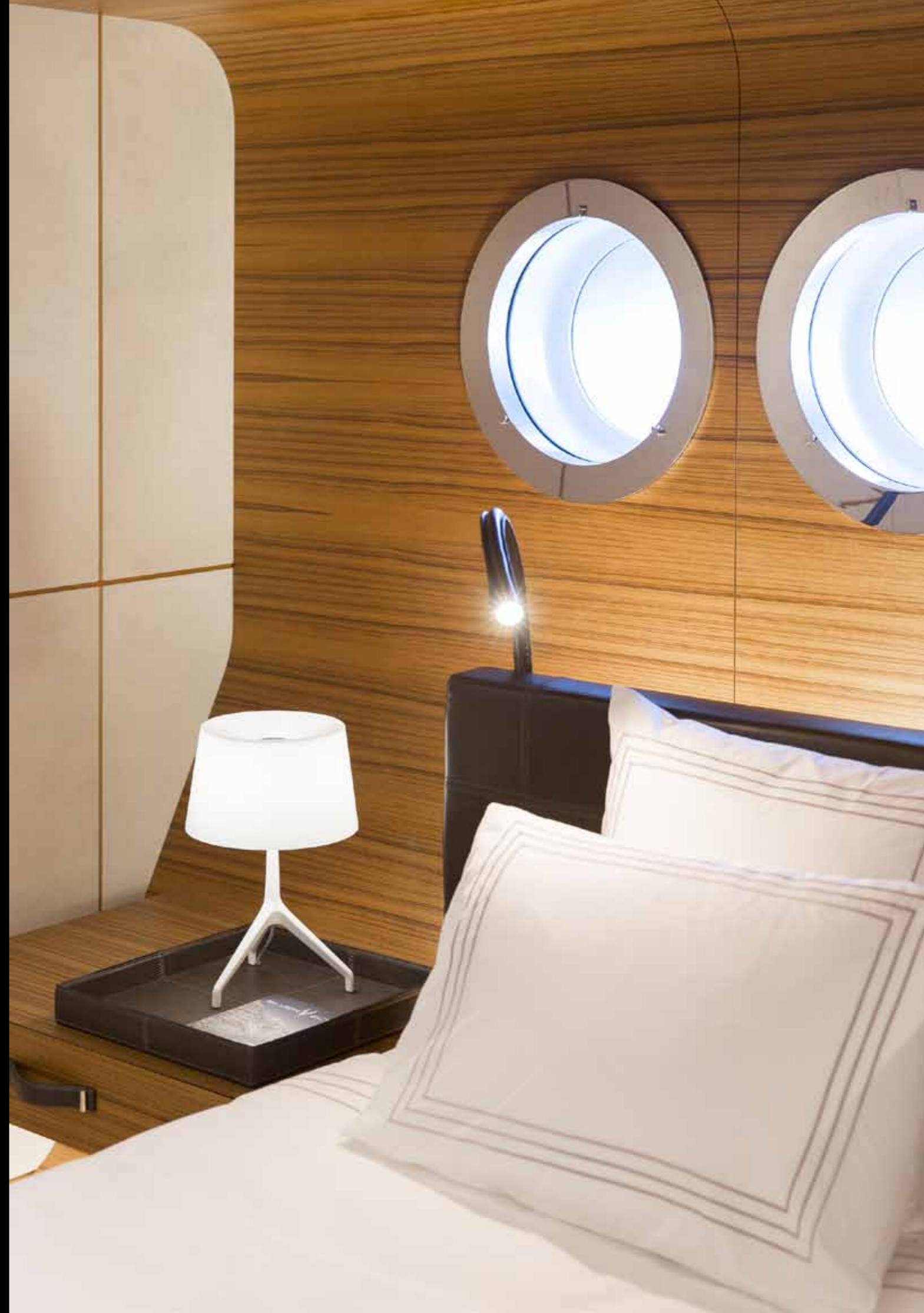












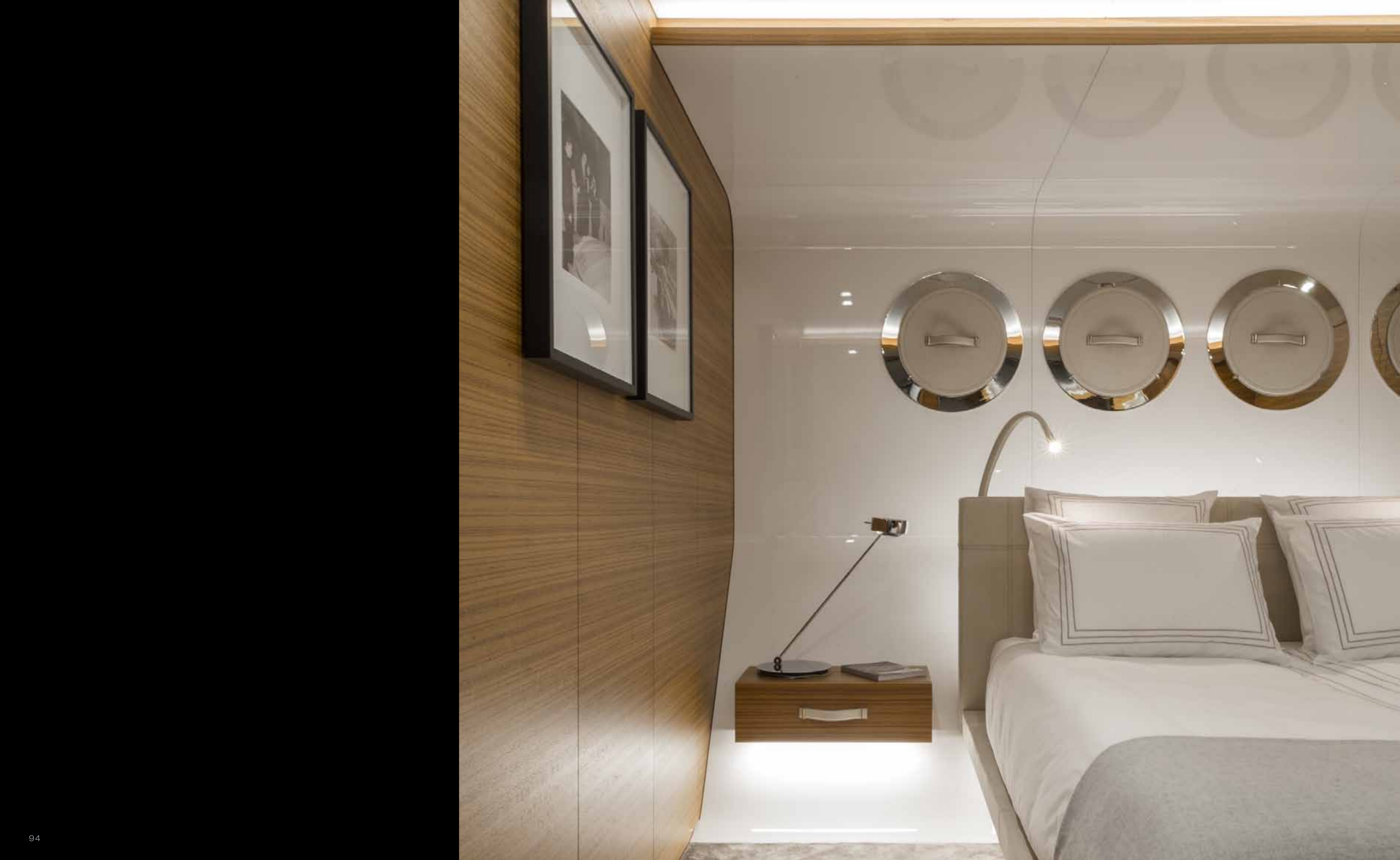


LOWER DECK



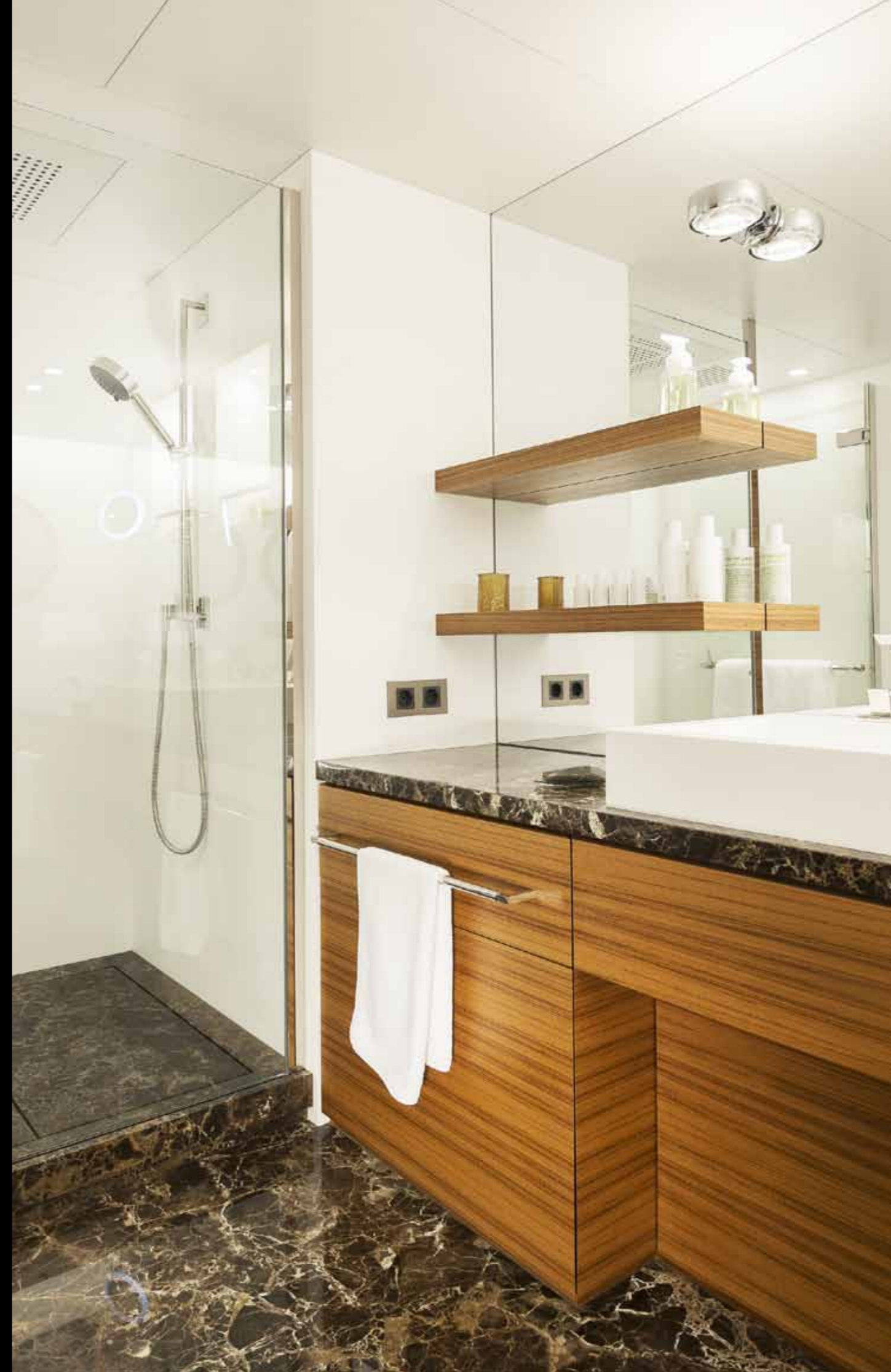




















SILVER FAST



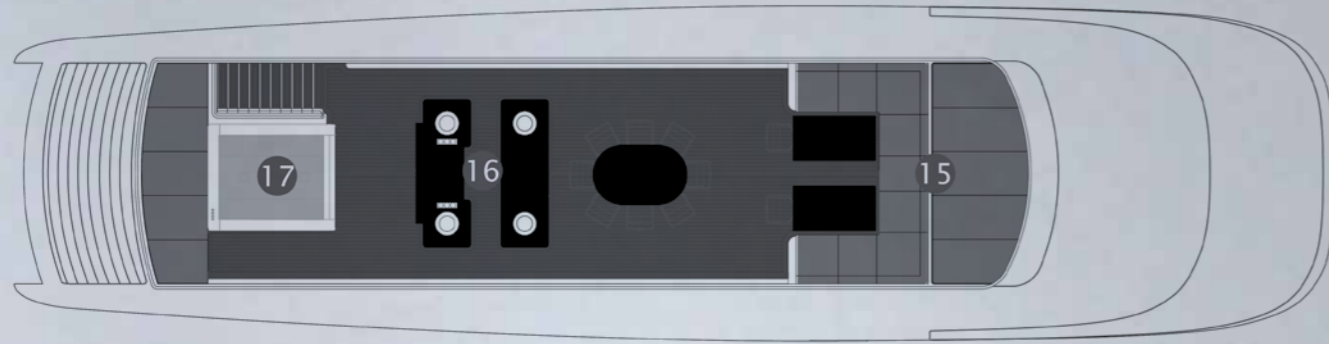
GENERAL ARRANGEMENT

A / SUN DECK

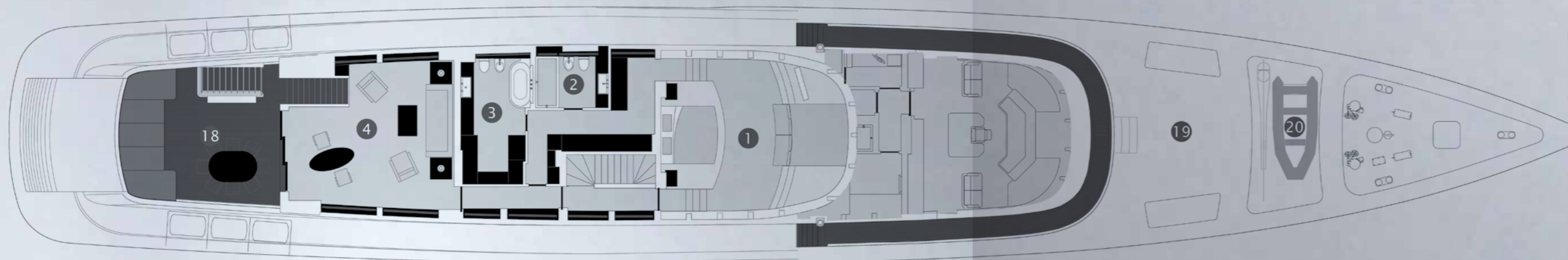
- 15. FWD sundeck lounge / dining
- 16. Sundeck bar
- 17. AFT sundeck lounge and jacuzzi

B / OWNERS DECK

- 1. Master State room
- 2. His ensuite
- 3. Hers ensuite
- 4. Owners salon
- 18. Owners outdoor retreat
- 19. Forward storage area
- 20. FWD rescue garage



A



B

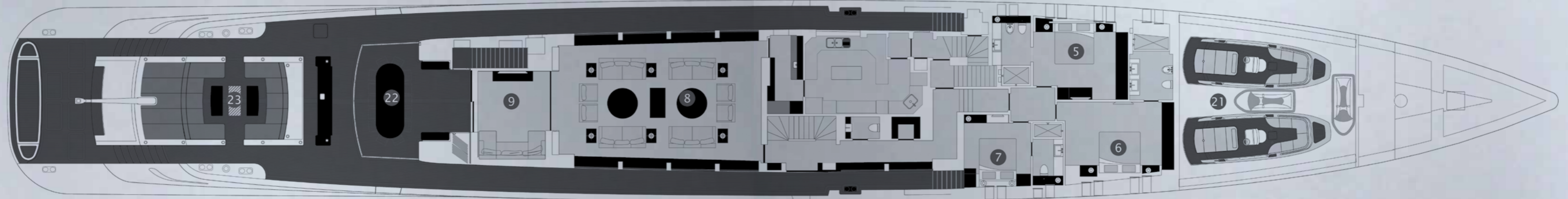
GENERAL ARRANGEMENT

C / MAIN DECK

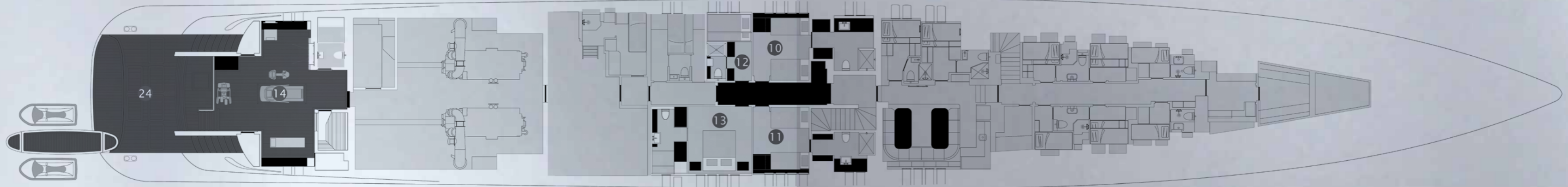
- 5. VIP cabin I
- 6. VIP cabin II
- 7. VIP cabin III
- 8. Main Salon
- 9. Theatre room
- 21. Main tender / waverunner garage
- 22. Main deck wintergarden
- 23. Raised seating / lounge area

D / LOWER DECK

- 10. Guest Cabin I
- 11. Guest Cabin II
- 12. Guest Cabin III
- 13. Guest Cabin IV
- 14. Beach Club / Gymnasium /
Sauna / Massage
- 24. AFT Bathing / Marina



C



D



TECHNICAL SPECIFICATIONS

Yacht Design:	Espen Øino
Naval Architecture:	Espen Øino
	HANSEATIC MARINE SILVERYACHTS
Interior Design:	Vain Interiors, Germany
Builder:	HANSEATIC MARINE SILVERYACHTS
	124 Quill Way, Henderson,
	Western Australia, 6166
Year:	2015

Length Overall:	77.0m (252.6ft)
Beam Moulded:	10.0m (32.8ft)
Draught (Hull):	2.6m (8.5ft)
Gross Tonnage:	952 tonnes
Displacement:	560 tonnes
Top Speed:	27 knots
Cruising Speed:	25 knots
Range:	4,500nm at 18 knots
Range:	6,000nm at 14 knots
Diesel fuel capacity:	112,000 litres
Freshwater capacity:	31,000 litres
Construction:	Aluminium hull & aluminium superstructure
Classification:	LRS 100A1 SSC Yacht Mono G6 LMC (UMS)
Administration:	Cayman Islands - LY2 (mca large yacht code)
Main engines:	2 x mtu 16V 4000 M90 - 2720kW @2100rpm
Main generators:	2 x Northern Lights 1066H Diesel generators - 155kWe 1 x Northern Lights M1276A2 - 230kWe
Emergency generator:	1 x Volvo D7A T Diesel generator - 108kWe
Bowthruster:	1 x American trac series - 150kW electric
Stabilisers:	Quantum Zero Speed Ride Control fins - 1 pair forward, 1 Pair aft

Accommodation - owner & guest:	Owner's apartment with lounge and large private deck 3 x double vip guest suites 1 x double guest cabin 2 x twin guest cabins + pullman 1 x twin guest cabin
Accommodation - crew:	1 x captain's cabin with ensuite 6 x crew twin berth cabins with ensuite 5 x crew single berth cabins with ensuite
Tenders:	2 x 7.4m custom built tenders with 220hp Volvo-Penta Stern Drive
Jacuzzi:	Customised 8-person jacuzzi pool
Sauna:	Customised Klafs sauna

AWARDS & PRESS



1. SHOW BOATS DESIGN AWARDS 2013 – WINNER INTERIOR DESIGN AWARD – DISPLACEMENT MOTOR YACHTS OVER 60m – SMERALDA
2. BOAT INTERNATIONAL WORLD SUPERYACHT AWARDS 2013 – WINNER DISPLACEMENT MOTOR YACHT OF 500GT TO 1,299GT – SMERALDA
3. INTERNATIONAL YACHT & AVIATION AWARDS 2013 – FINALIST INTERNATIONAL YACHTS INTERIOR DESIGN & WINNER ASIA PACIFIC YACHT OVER 40m – SMERALDA
4. MONACO YACHT CLUB 'BELLE CLASSE AMBASSADOR' AWARDED TO GUIDO KRASS, SEPTEMBER 2012 – SMERALDA
5. AUSTRALIAN SUPERYACHT INDUSTRY AWARDS 2012 – WINNER SUPERYACHT INDUSTRY BUSINESS OF THE YEAR (MANUFACTURER)
6. SHOW BOATS DESIGN AWARDS 2010 – FINALIST EXTERIOR DESIGN AND STYLING AWARD – MOTOR YACHTS; NAVAL ARCHITECTURE AWARD – MOTOR YACHTS & AWARD FOR AN EXTERIOR DECK AREA DESIGNED FOR GUEST USE – SILVER ZWEI
7. AUSTRALIAN SUPERYACHT INDUSTRY AWARDS 2008 – WINNER EXCELLENCE IN THE CONSTRUCTION OF A NEW SUPERYACHT – SILVER
8. BOAT INTERNATIONAL WORLD SUPERYACHT AWARDS 2008 – FINALIST SEMI-DISPLACEMENT MOTOR YACHT OVER 40m – SILVER
9. SHOW BOATS INTERNATIONAL AWARDS 2008 – WINNER SEMI-DISPLACEMENT MOTOR YACHT OVER 50m – SILVER
10. SILVERYACHTS WAS PROUD TO BE ACCEPTED AS A MEMBER OF SYBASS (SUPER YACHT BUILDERS ASSOCIATION) IN 2012.



BURGESS

London

+44 20 7766 4300
london@burgessyachts.com

Miami

+1 305 672 0150
miami@burgessyachts.com

Monaco

+377 97 97 81 21
monaco@burgessyachts.com

New York

+1 212 223 0410
newyork@burgessyachts.com

Moscow | Palma | Athens | Los Angeles | Seattle

www.burgessyachts.com



www.silveryachts.com

SILVER V YACHTS

