

S O N I S H I

1



*Sonishi*

F O R C H A R T E R



---

## SONISHI

---

Delivered in 2019 by acclaimed British shipyard Sunseeker, SONISHI promises to make a splash on the charter scene. Built to RINA classification rules, this powerful yacht has an impressive top speed of 22 knots and cruises comfortably at 12 knots.

---

### OVERVIEW

The sought-after Sunseeker's 131 series, SONISHI was handfinished at their state-of-the-art facilities in Poole and features a fully customised interior layout. Spacious and open, she offers endless options for relaxing and socialising in the sunshine.

### GUEST CAPACITY

Designed to welcome groups of family and friends, SONISHI has accommodation for up to 10 guests across her 5 generously-sized staterooms. She also has accommodation for her highly professional 8-person crew on the lower deck. Stylish and modern, SONISHI's full-beam master suite is located forward on the main deck. Beautifully finished with an ultra-luxurious vibe, the master suite features a private lounge and study area plus a spa-inspired bathroom equipped with both a full bathtub and rainfall shower.

## SPECIFICATIONS

40.05M | SUNSEEKER | 2019

 LENGTH 40.05m

 BEAM 8.09m

 NO. OF GUESTS 10

 MAX SPEED 22 kts

 GUEST CABINS 5

 RANGE 1036 nm

## INTERIOR

Styled by the inhouse design team at Sunseeker, SONISHI's interiors are designed to dazzle. Bright and open, full-length windows flood the interior with natural light while rich woods are paired with contemporary furnishings and concealed lighting for a streamlined contemporary feel.

## EXTERIOR

Featuring Sunseeker's distinctive blend of design and craftsmanship, SONISHI's sleek exterior offers exceptional space and volume. Her generous exterior living spaces are spread over 3 decks with multiple outdoor lounge and dining areas.

















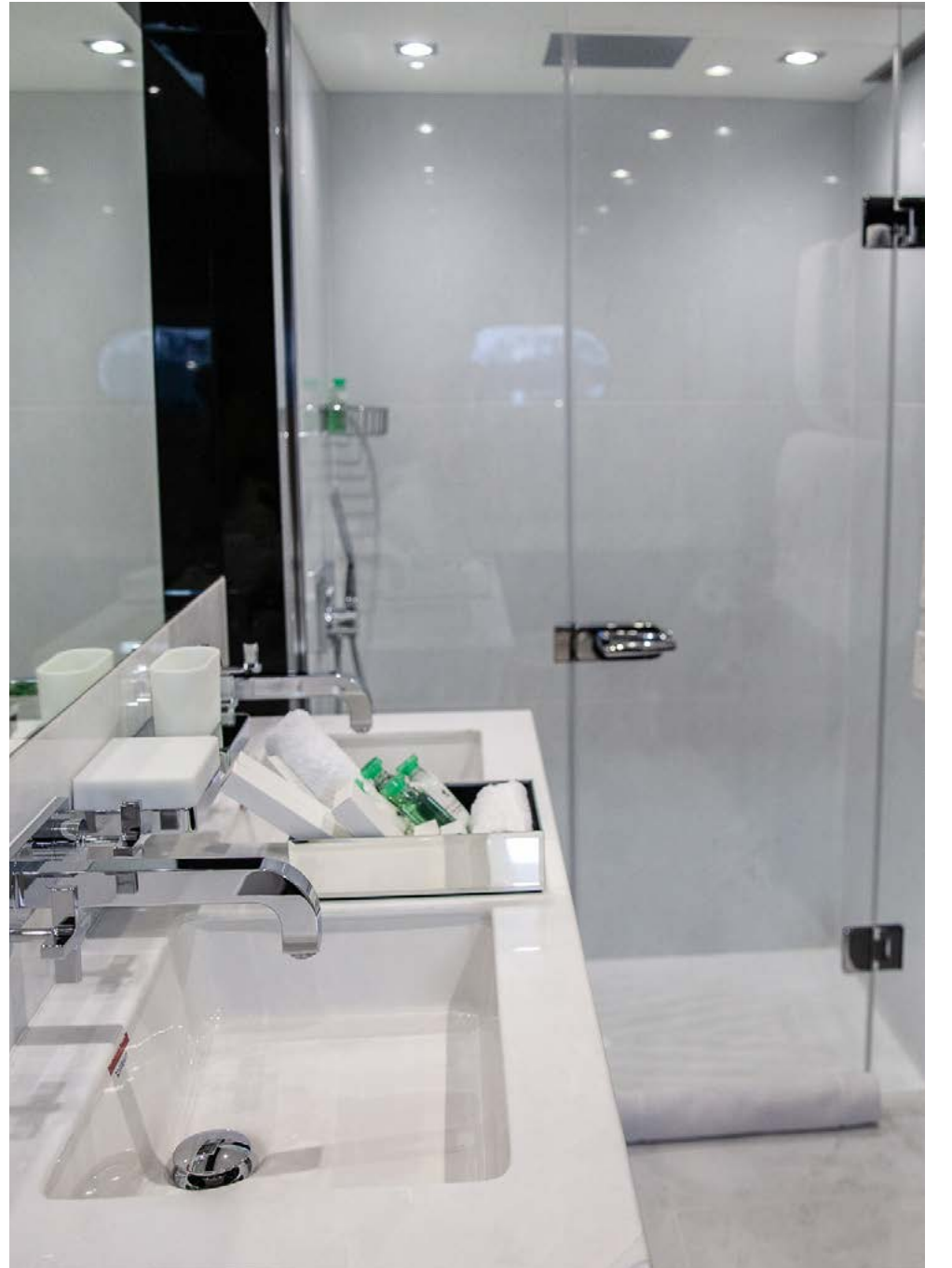
























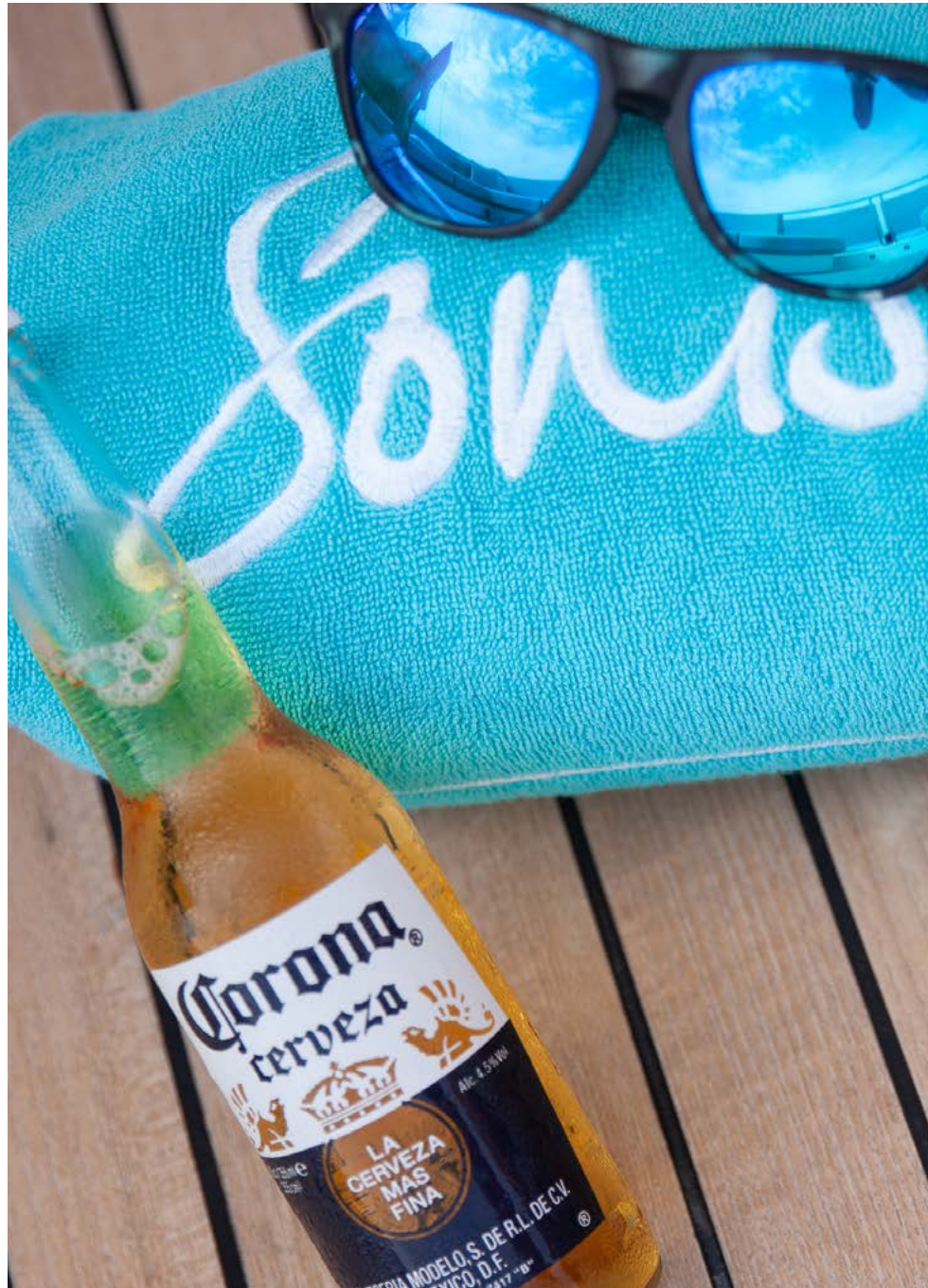
























## TOYS &amp; TENDERS

## TOYS, EQUIPMENT &amp; ACCESSORIES

- 7m De Antonio Yachts D23 Tow Tender named "Sonishi Too"
- 1 x Williams 565 Jet Tender
- 1 x Seadoo RXP – X 300 Jetski
- 2 x Seabobs – F5S
- 2 x Sevylor 3 person Inflatable kayaks
- 2 x JP Australia 10'6 Inflatable SUP
- 3 x Inflatable toys ( 1P donut, 2P Airstream, 3P Baller)
- 1 x Wakeboard – Jobe Logo 138cm
- 1 x New electric hover/ flight board
- 2 x Waterskis Jobe ( Jnr Hemi Combo 148cm / Adult Mode Combo 167cm )
- 1 x Raft Nautibouy 5.25M
- Snorkelling Sets – Assortment ( Jnr / Adult )
- Swimming Accessories, beach toys and Noodles
- Fishing Gear ( Rods 2 Jnr / 3 Adult / 2 hand lines)
- 2 x Electric Mountain Bikes – Specialized, Turbo Levo
- 2 x Electric Scooters - Revoo





## SPECIFICATIONS

## AUDIO-VISUAL &amp; DECK EQUIPMENT

- Samsung TV with Sky decoders and Harman Kardon Sound System
- Apple TV in all cabins.
- Sonos Airplay in Saloon, Sky lounge and all Exterior areas of the boat

## MAIN MACHINERY

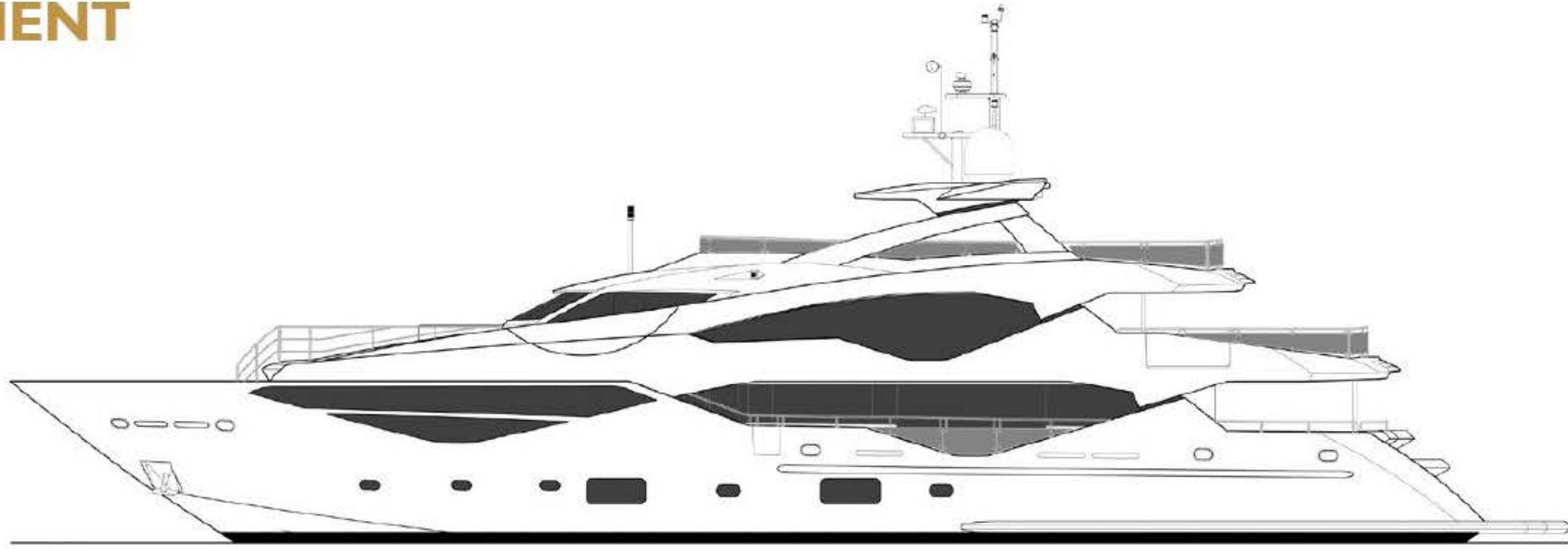
- Engines & Generators:
- Engines: 2 x MTU 12V 4000 M93
- Generators: 2 x Kohler 80 kW
- Fuel consumption: 250 Litres/Hr
- Gross Tons: 341
- Cruising speed: 12 knots

## GENERAL INFORMATION

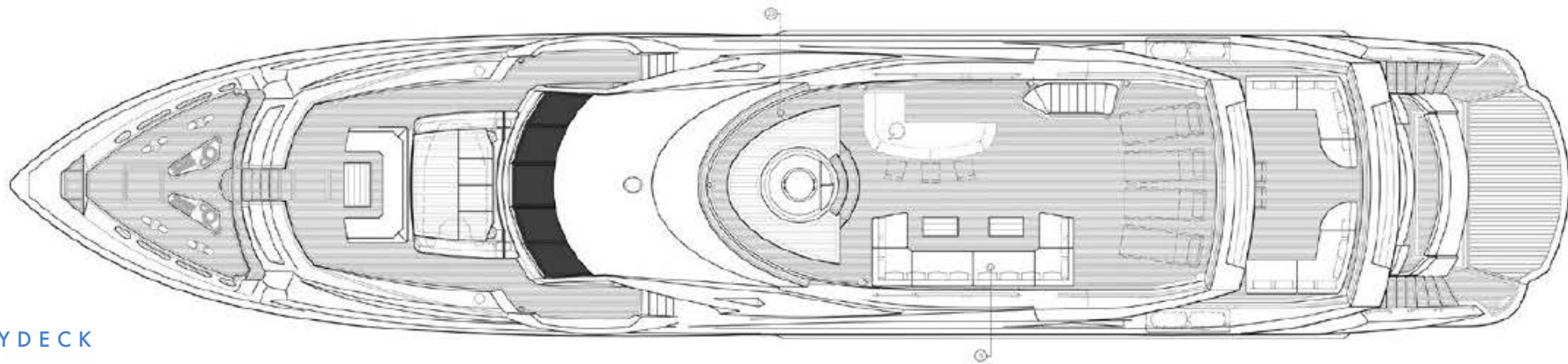
- Length: 40.05m (131' 5")
- Beam: 8.09m (26' 7")
- Draft: 2.70m (8' 10")
- Year built: 2019
- Builder: Sunseeker
- Interior Designer: Sunseeker
- Number of Cabins: 5
- Total Guests (Sleeping): 10
- Total Guests (Cruising): 12
- Max N° of Guests for Quayside Events: 40
- Cabin Configuration: 2 Double, 2 Twin, 2 Convertible
- Master cabin on main deck: No
- Total Crew: 8
- Number of Beds:
- Bed Configuration: 1 King, 2 Queen, 3 Double



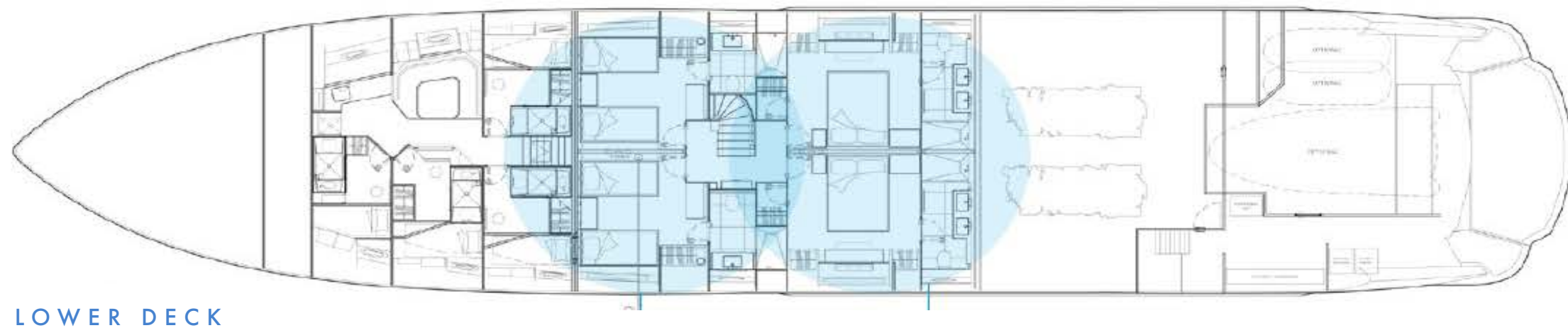
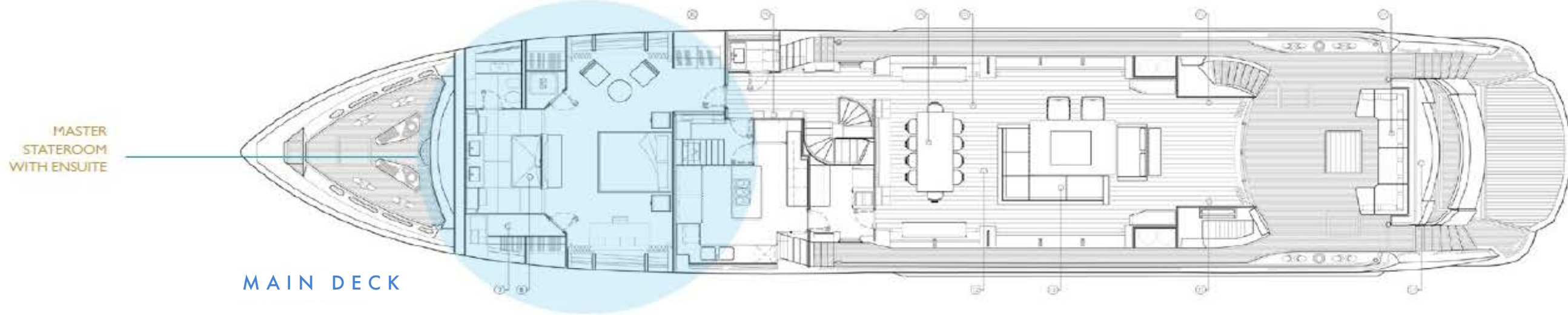
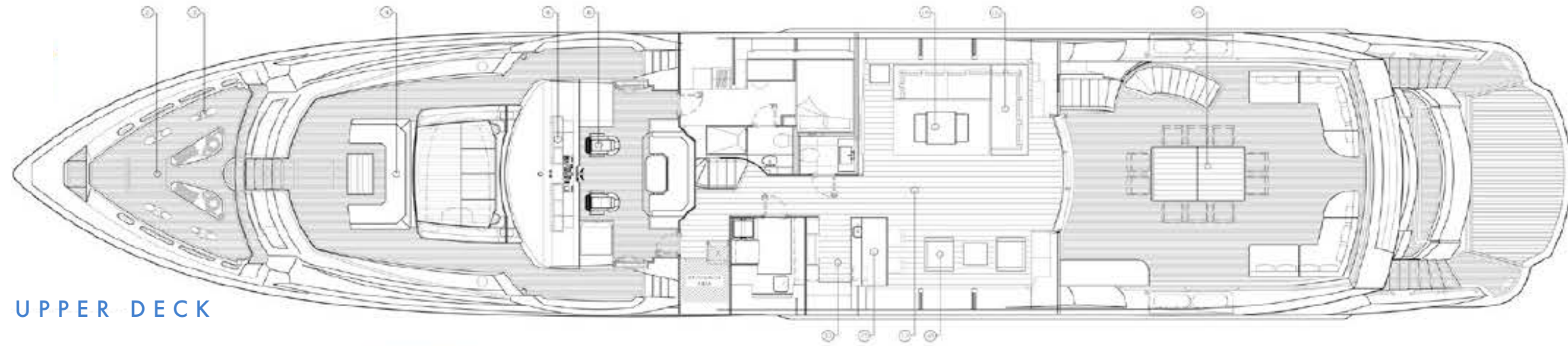
# GENERAL ARRANGEMENT



PROFILE



SKYDECK



## DISCLAIMER

While every effort has been made to ensure that the information contained within this presentation is as up-to-date and accurate as possible at the time of going to press, this cannot be guaranteed. All rights reserved. No part of this publication may be reproduced or used in any form without prior written permission.