

SOUNION II



31.62m (103' 9") | Benetti | 1969/2023



Main Deck Aft



Main Deck Aft



Main Deck Aft



Main Deck Aft



Main Salon



Main Salon



Main Salon



Main Salon to Dining Area



Dining



Dining



Study



Study



Master Cabin with 2 extra fixed Pullman Berths



Master Cabin - Upper Deck



Master Cabin - Upper Deck



Master Cabin - Upper Deck



Master Cabin - Upper Deck



Master Cabin - Use of Private Terrace



Upper Deck Aft



Upper Deck - Aft



Upper Deck - A1



Upper Deck - Forward



Upper Deck - Forward



Upper Deck - Forward



VIP Cabin - Lower Deck



VIP Cabin - Lower Deck



VIP Cabin - Lower Deck



VIP Cabin - Lower Deck



VIP Cabin - Lower Deck



VIP Cabin - Lower Deck



VIP Cabin Bathroom - Lower Deck



VIP Cabin 2 - Lower Deck



VIP Cabin 2 - Lower Deck



VIP Cabin 2 - Lower Deck



VIP Cabin 2 – Lower Deck



VIP Cabin 2 Bathroom - Lower Deck



Twin Cabin - Lower Deck



Fly Deck



Fly Deck



Fly Deck



Fly Deck



Sun Deck - Outdoor Cinema















Specifications

Dimensions

| | |
|--------|------------------|
| Length | 31.62m (103' 9") |
| Beam | 6.2m (20' 4") |
| Draft | 3m (9' 10") |

General

| | |
|-------------------|--------------------|
| Year | 1969/2023 |
| Builder | Benetti |
| Exterior Design | Dixon Yacht Design |
| Interior Design | Anouska Hempel |
| Hull Construction | Steel |
| Gross Tonnage | 180 |

Accommodation

| | |
|------------------|----------------------|
| Number of Cabins | 4 (3 Double, 1 Twin) |
| Total Guests | 10 |
| Total Crew | 6 |

Technical Information

| | |
|------------------|---|
| Engines | 2 x Volvo TAMD 750 hp each |
| Generators | 200 litres/day |
| Fuel Capacity | 37,000 litres (excluding service tank) |
| Fuel Consumption | 150 litres/hr |
| Range | At economic speed of 11 knots: 2,900nm |
| Maximum Speed | 13 knots |
| Cruising Speed | 11.5 knots |
| Stabilizers | Underway |

Certifications

| | |
|------------------|----------------|
| Flag | Malta |
| Port of Registry | Valetta |
| Class / MCA | Bureau Veritas |

Tender and Toys

- 1 x ZAR Tender (2017) 3.60m with Suzuki 40hp
- 1 x Kappa Tender (2018) 2.70m with Suzuki 6hp
- 2 x Wake board
- 2 x Stand up paddle
- Snorkeling equipment Alpha swim fins
- Yoga mats
- Various weights
- Fishing equipment

Toys For Season 2022

- NautiBuoy swim platform 3.5m x 1.5m plus
2 Seabob C-Dock and ladder into the water
- 2 x New Jobe SUP
- 1 x Inflatable kayak
- 1 x Inflatable sailing yacht
- 1 x Elliptical Trainer to be placed on board
upon request (free of charge)

Gym Equipment

- Yoga mats
- Weights
- Workout resistance bands

Audio Visual Equipment and Deck Facilities

- 4 x LG 23" TV's in the cabins
- 1 x SONY 40" TV in the living room
- Satellite TV in all cabins and salon
- PlayStation 4
- SONOS Sound System
- LG Beach Party Portable Speaker
- Board games
- Wine preservation La Sommelier

Communications

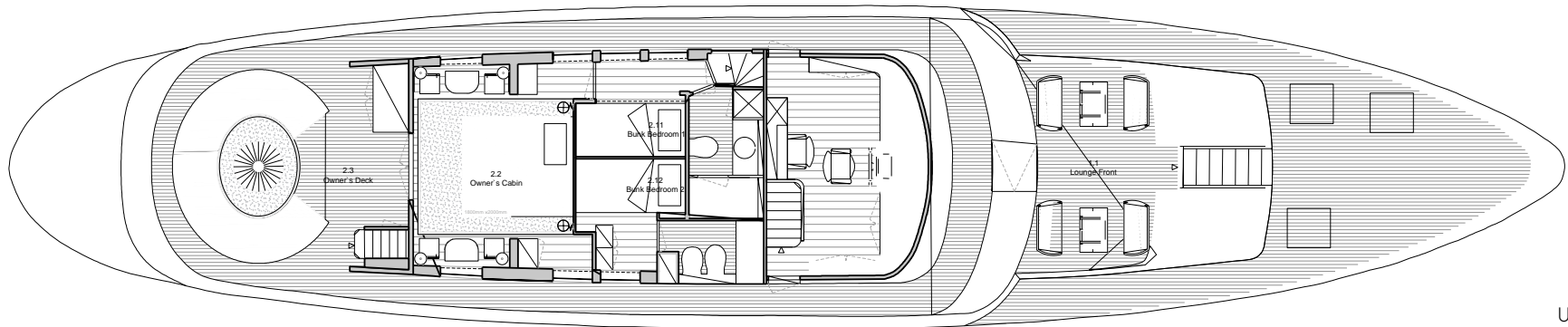
- Meridian 5G Wi-Fi coverage through out all decks
- 3 portable VHF's

Various

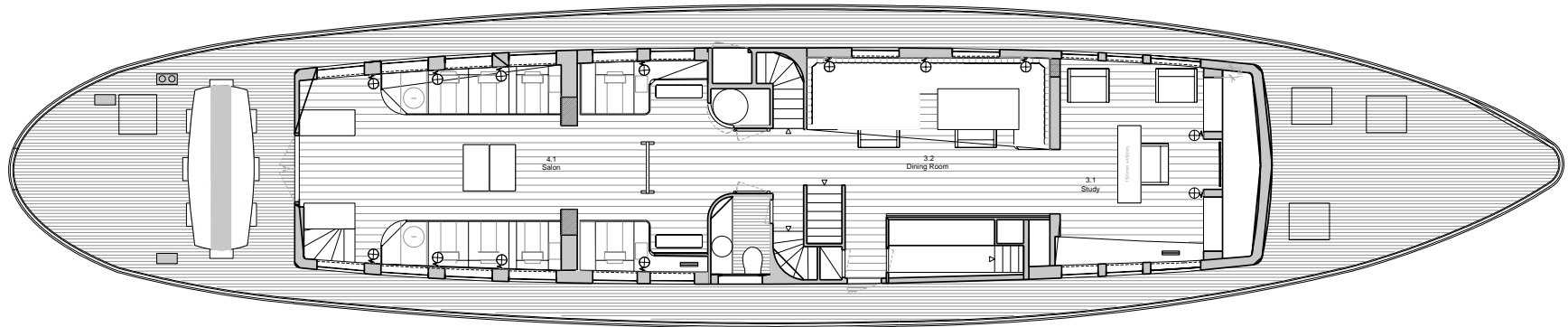
- Air Conditioning
- WiFi

Weekly Charter Rates - MYBA Terms

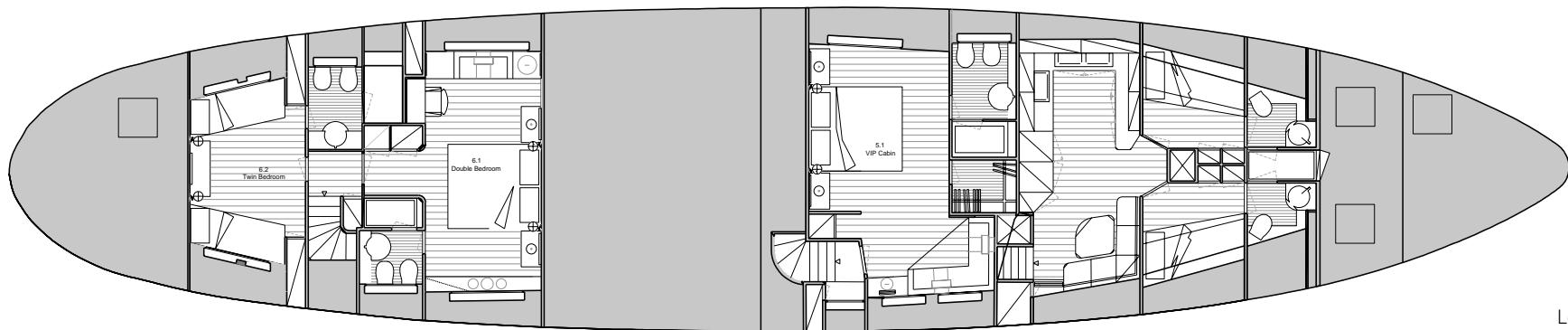
€65,000 per week (high rate)
€55,000 per week (low rate)



Upper Deck



Main Deck



Lower Deck

