



## KEY INFORMATION



LENGTH

**26.78 m**



DRAFT

**1.93 m**



CRUISING SPEED

**24 knots**



CABINS

**5**



BEAM

**6.59 m**



CREW

**4**



GROSS TONNES

**145**



GUESTS

**10**

---

Introducing Vesta, one of Azimut's iconic 27 Grande models. Brand new to the charter market for 2024, this 2023 delivered luxury motor yacht provides space and serenity at sea, the perfect option for guests looking to cruise the glittering coastline of the Mediterranean in style. Boasting the model's five cabin layout, she provides accommodation for up to 10 guests.

With design by Stefano Righini, her exterior is easily distinguishable on the water with her strong shape, bold angles and an utterly unique combination of different shaped windows. Her flybridge is vast and provides guests with the ultimate vantage point from which to enjoy endless ocean views, with comfortable outdoor seating and an alfresco dining area with wetbar, all covered by a retractable hardtop roof for sun and shade as required, with sun loungers aft.

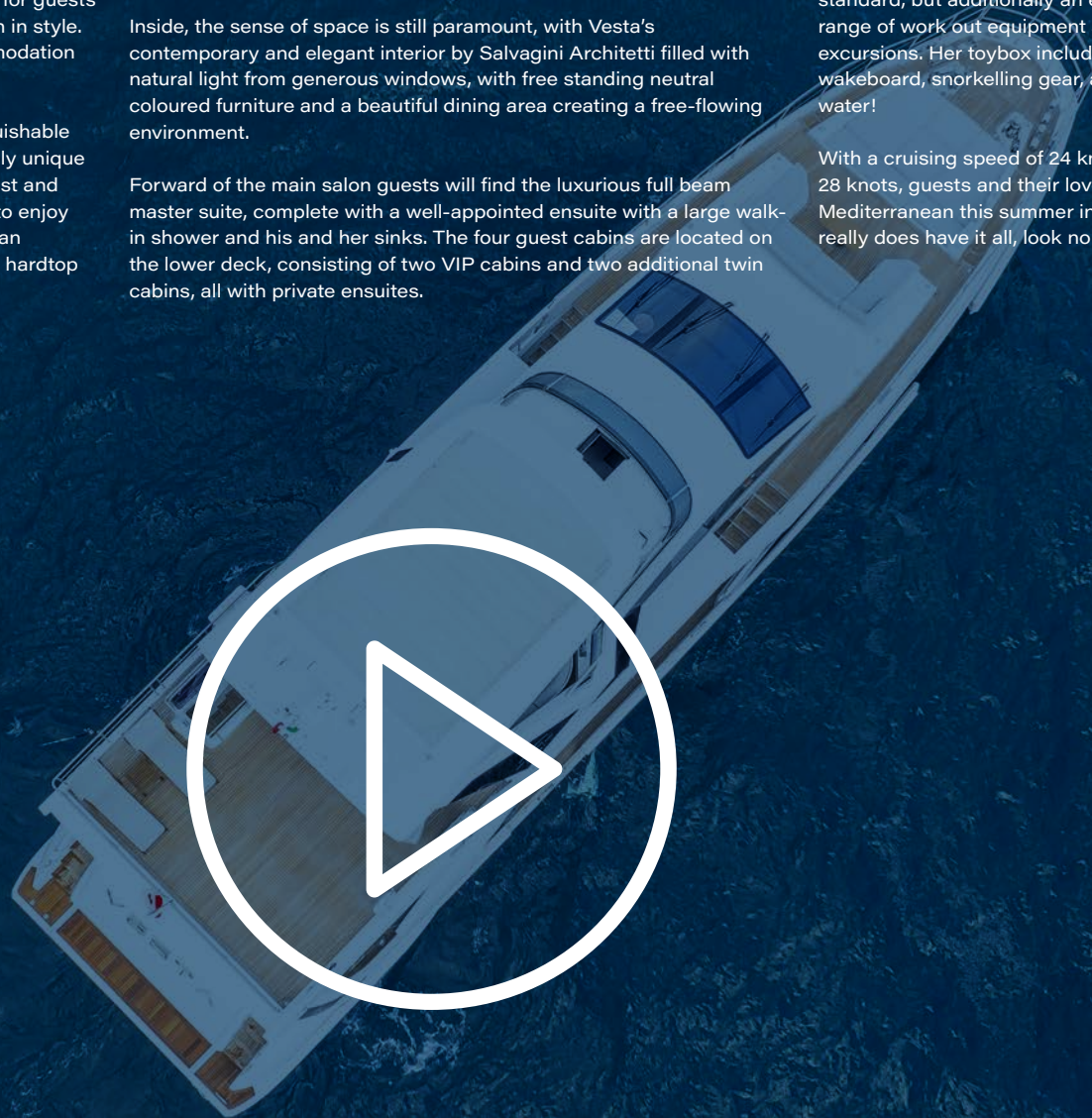
The foredeck is also exceptionally spacious, equipped with a huge sun pad and an additional seating for dining and relaxation in privacy.

Inside, the sense of space is still paramount, with Vesta's contemporary and elegant interior by Salvadini Architetti filled with natural light from generous windows, with free standing neutral coloured furniture and a beautiful dining area creating a free-flowing environment.

Forward of the main salon guests will find the luxurious full beam master suite, complete with a well-appointed ensuite with a large walk-in shower and his and her sinks. The four guest cabins are located on the lower deck, consisting of two VIP cabins and two additional twin cabins, all with private ensembles.

Expect all the modern comforts and amenities typical of much larger yachts aboard Vesta, with stabilisers, WiFi and air conditioning as standard, but additionally an exceptionally well-stocked toybox, a range of work out equipment and a Williams 445 tender for shoreside excursions. Her toybox includes SUPS, towables, water skis, a wakeboard, snorkelling gear, and seabobs, promising lots of fun on the water!

With a cruising speed of 24 knots and a maximum speed of up to 28 knots, guests and their loved ones can cruise the waters of the Mediterranean this summer in speed and true style. For a yacht that really does have it all, look no further than Vesta.



## BASIC INFORMATION

<b>Name</b>	Vesta
<b>Year built</b>	2023
<b>Hull configuration</b>	Planing hull
<b>Interior designer</b>	Salvagni Architetti
<b>Naval architect</b>	Stefano Righini
<b>Flag</b>	Maltese
<b>Hull construction</b>	GRP
<b>Builder</b>	Azimut
<b>Port of registry</b>	Valletta
<b>Classification</b>	RINA

## SPEED / WEIGHT

<b>Cruise Speed</b>	24kn
<b>Cruise Speed Range</b>	360nm
<b>Max Speed</b>	28kn
<b>Gross Tonnage</b>	145

## TENDERS & TOYS

<b>Tenders</b>	1 x Williams tender 445 DJ
<b>Toys</b>	2 x Jobe inflatable paddleboards
	1 x Jobebinair towable for 4 Persons
	1 x Jobe water skis
	1 x Jobe wakeboard
	4 x Snorkelling packages with full face masks + Fins
	2 x New Seabobs F5s

## ACCOMMODATION

<b>Guests sleeping</b>	10
<b>Total guests cruising</b>	12
<b>Number of beds</b>	7
<b>King beds</b>	1
<b>Queen beds</b>	2
<b>Number of single beds</b>	4
<b>Number of cabins</b>	5
<b>Number of double cabins</b>	3
<b>Number of triple cabins</b>	0
<b>Number of twin cabins</b>	2
<b>Cabin sizes</b>	1 x Master, 2 x Double, 2 x Twin

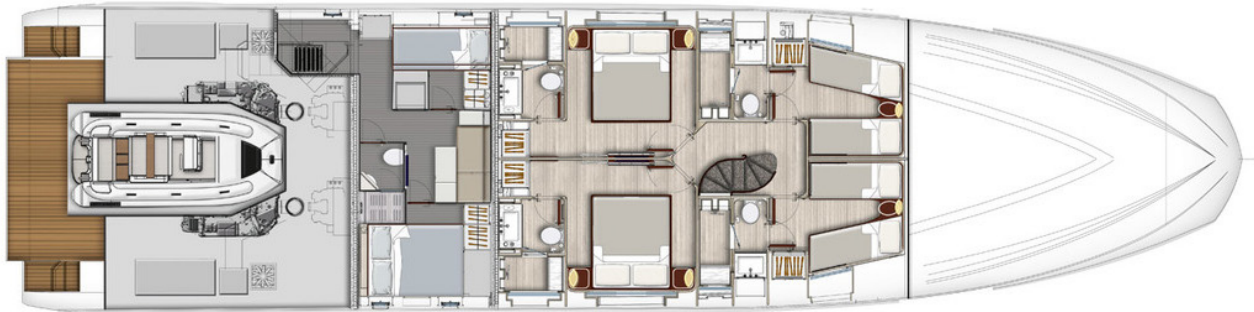
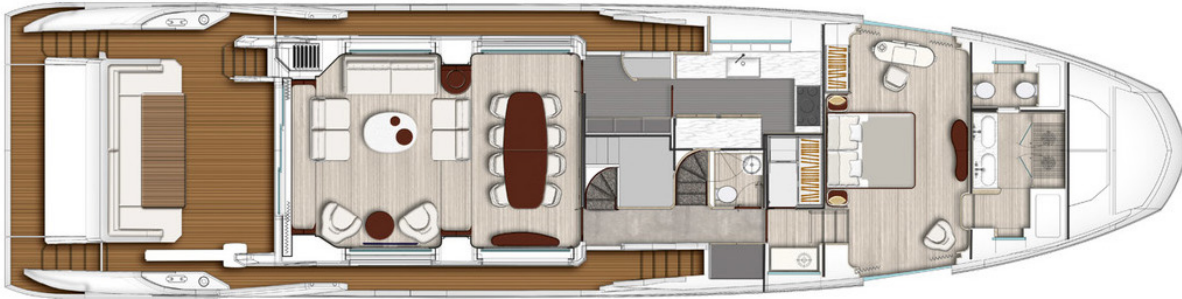
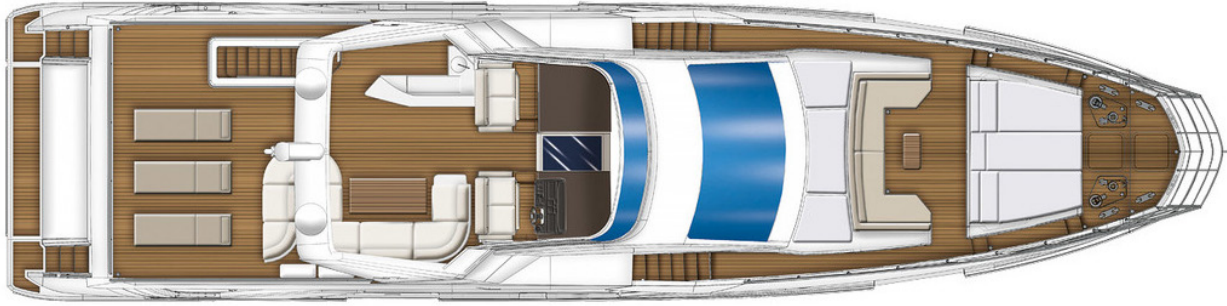
## EQUIPMENT

<b>Equipment</b>	Air conditioning
	Wifi
	Stabilisers at anchor
	Stabilisers underway

## DIMENSIONS

<b>LOA</b>	26.78m
<b>Beam</b>	6.59m
<b>Draft</b>	1.93m

# DECK PLAN





EXTERIOR VIEW













FOREDECK LOUNGING



FOREDECK LOUNGING



SUN DECK DINING



SUN DECK DINING



SUN DECK LOUNGING



SUN DECK BAR AND DINING





SUN DECK BAR AND DINING







SWIM PLATFORM WITH SHOWER



SWIM PLATFORM WITH SHOWER























MAIN SALON









*Menu*

**STARTER**  
*Melon and prosciutto with a reduced pineau des Charentes sauce*

**MAIN**  
*Sisteron lamb chop served with butternut squash purée, purple carrots, herbed potato crisps, peas and mint, reduced jus and a roasted garlic emulsion*

**DESSERT**  
*Cointreau chocolate mousse, served with berries and white chocolate drizzle*





















MASTER CABIN



MASTER CABIN













DOUBLE CABIN















TWIN CABIN





