

FOR CHARTER

VICTORIOUS



BUILDER	AKYACHT
BUILT	2021
BEAM	14.2M / 46' 7"
STATEROOMS	6
GUESTS	12
CREW	24
SPEED	12.5 KNOTS / 16 MAX

CRUISING AREA SUMMER **MEDITERRANEAN**

CRUISING AREA WINTER **CARIBBEAN**

SUMMER RATE HIGH **€ 985,000 / WEEK**

SUMMER RATE LOW **€ 950,000 / WEEK**

WINTER RATE HIGH **\$ 1,000,000 / WEEK**

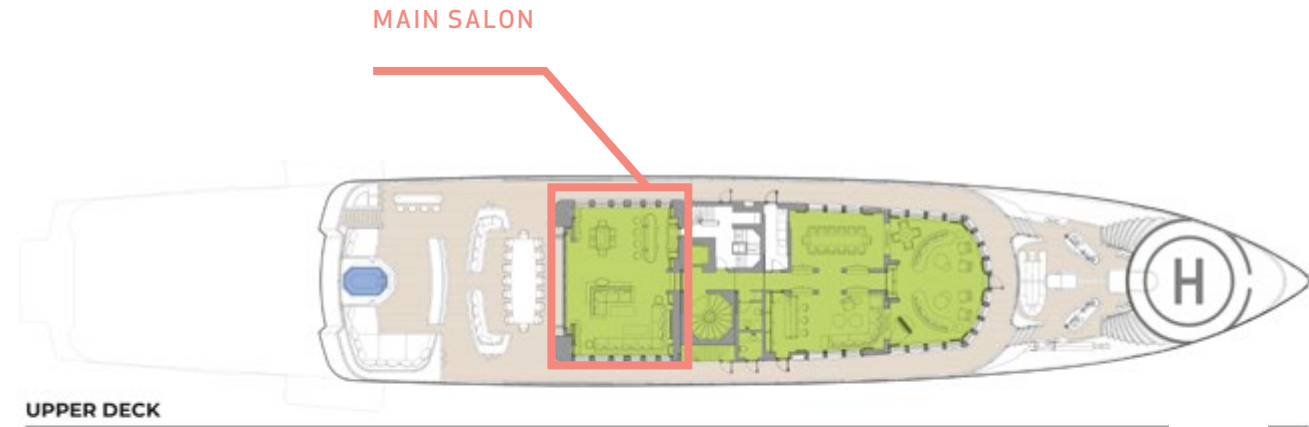
WINTER RATE LOW **\$ 950,000 / WEEK**

EXPERT'S VIEW

"VICTORIOUS is a multi-award-winning explorer yacht offering flexible accommodation for twelve guests in six spacious cabins including a large master suite with private terrace and Jacuzzi on the bridge deck, a full-beam VIP suite, and four guest suites on the main deck, accessible also through the yacht elevator. With endless options for complete indulgence and entertainment, guests will be pampered to a breathtaking retreat thanks to a fully open 200 sqm beach club with port and starboard balconies and swimming pool, a large spa equipped with hammam, gym, beauty salon and massage room, as well as a wine/ whiskey and cigar clubroom with fireplace, a cinema room and a dedicated children's playroom."

Yachts offered are subject to availability. The particulars are believed to be correct but are not guaranteed and may not be used for contractual purposes. Specification provided for information only.
Not for sale or charter to US residents while in US waters



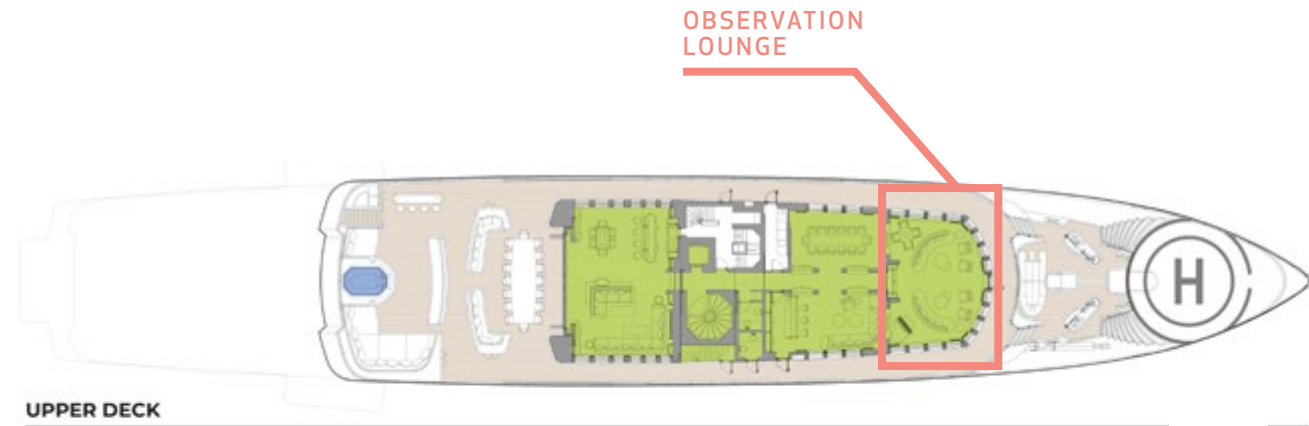


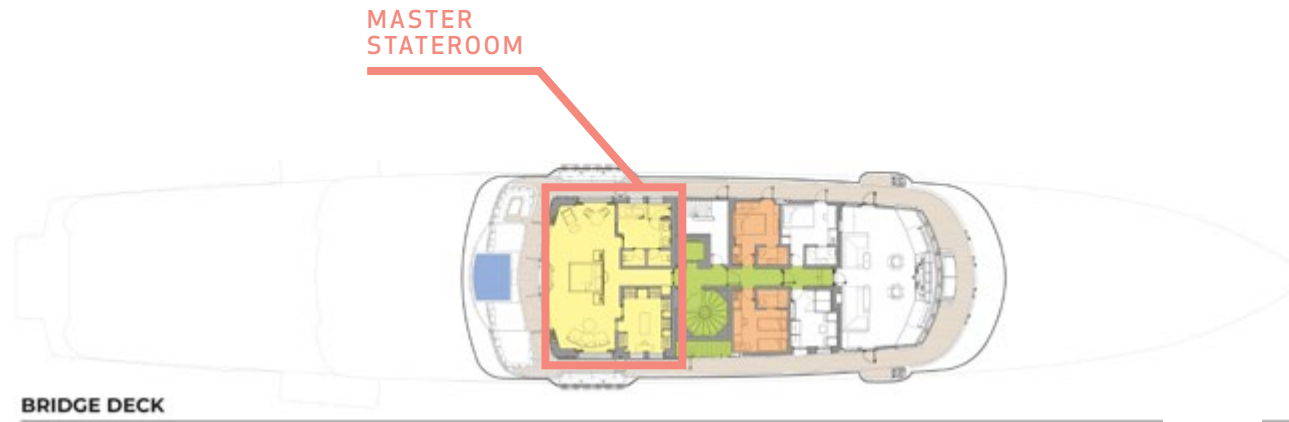




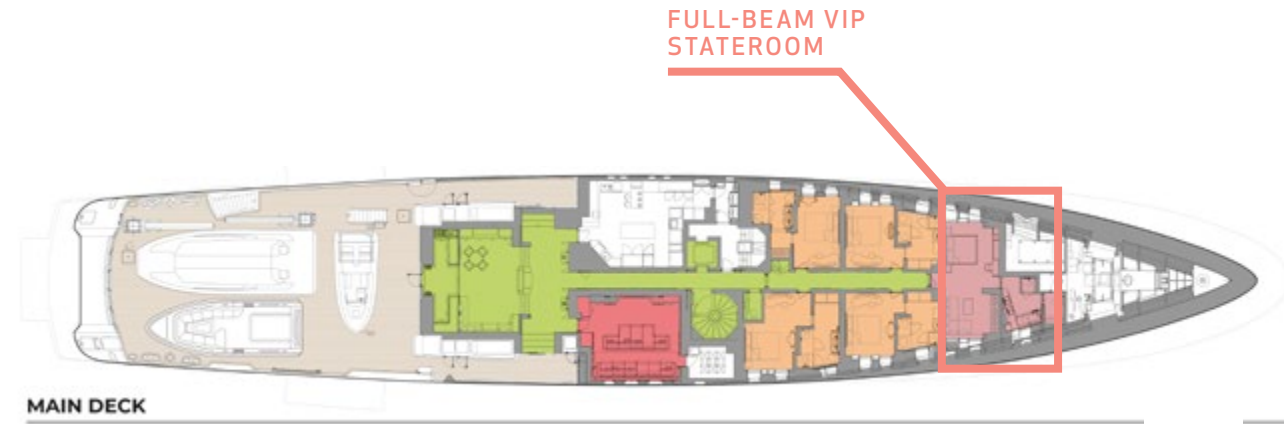


























WINE, WHISKEY &
CIGAR CLUB ROOM



SUN DECK















WELLNESS &
GYM AREA









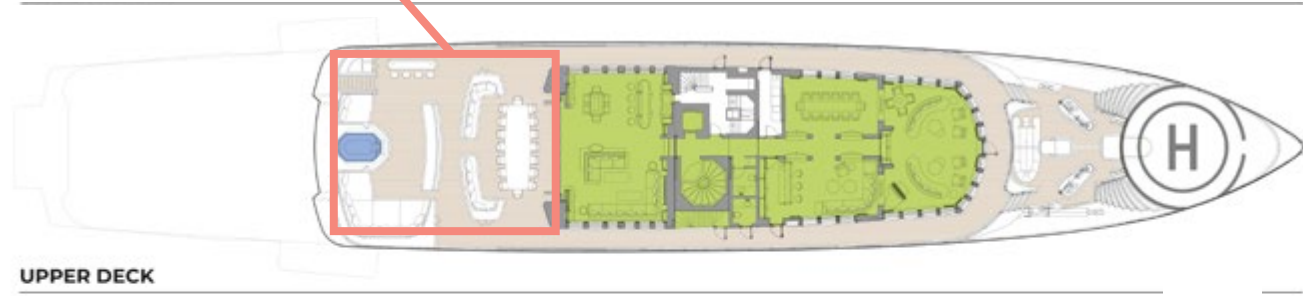








AL FRESCO DINING,
JACUZZI & BAR























TENDERS & TOYS

12.40M NIMBUS T11 TENDER (12 GUESTS)

10.87M RAFNAR TENDER (12 GUESTS)

8.00M NORDKAPP AIRBORNE (10 GUESTS)

3 X SEA-DOO JET-SKIS (230HP)

4 X SEABOBS F5S

2 X ELECTRIC FOILBOARD FLITEBOARD

4 X PADDLE BOARDS

WATERSKIS

WAKESKATE

TOYS & OTHER

WAKEBOARDS

4 X INFLATABLE KAYAKS
(2 X 3 GUESTS AND 2 X 2 GUESTS)

TOWABLE TOYS

INFLATABLE SWIMMING PLATFORM (4M X 4M)

SNORKELLING GEAR

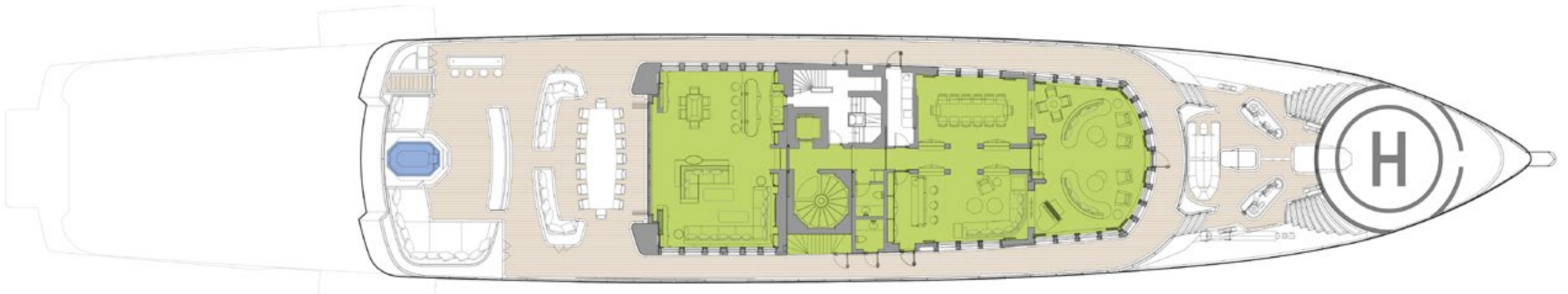
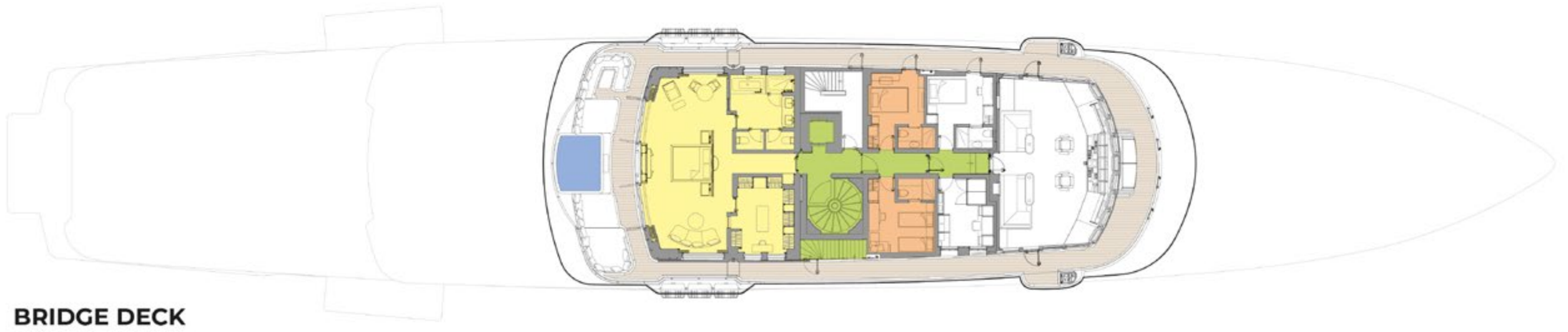
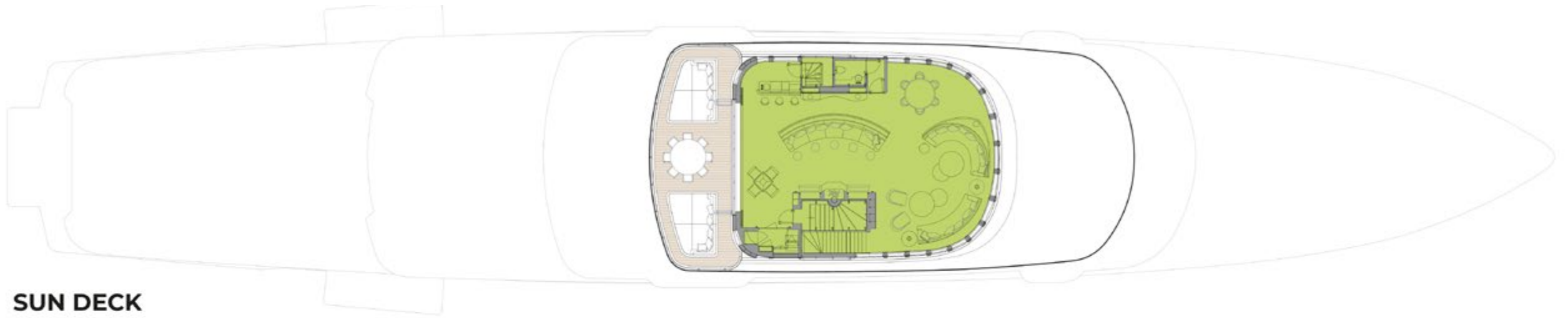
FISHING EQUIPMENT

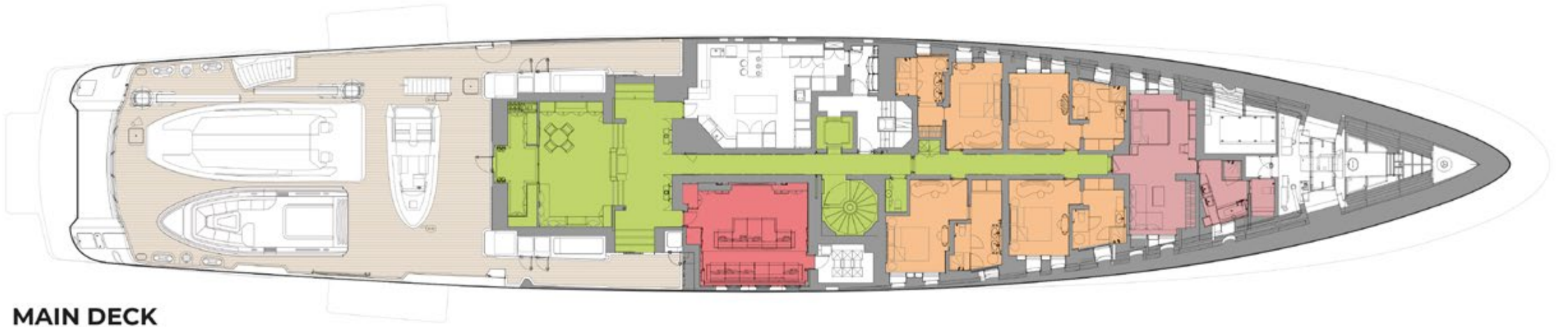
APPROVED RYA TRAINING CENTRE
FOR GUESTS' USE OF PERSONAL WATERCRAFT

DRONE (MAVIC DJ MINI 2 FLY COMBO)

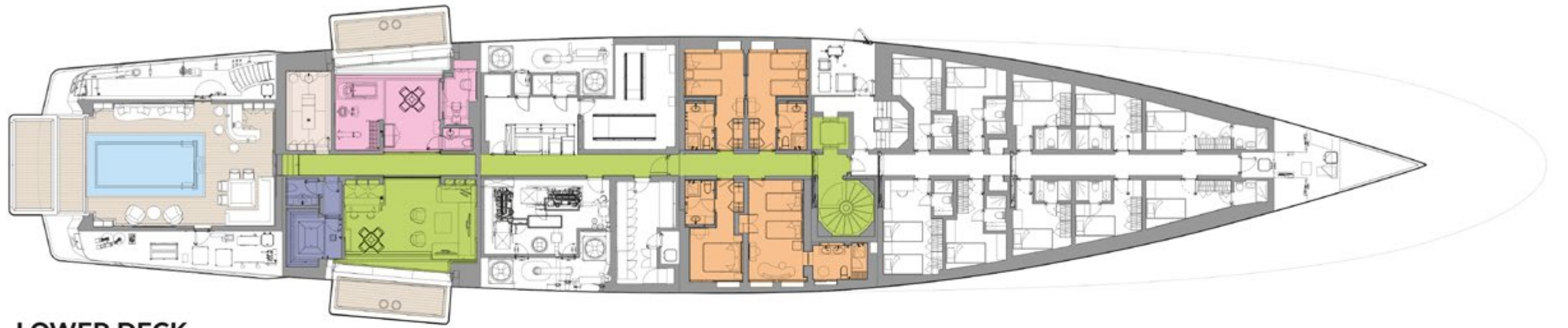
Yachts offered are subject to availability. The particulars are believed to be correct but are not guaranteed and may not be used for contractual purposes. Specification provided for information only.

Not for sale or charter to US residents while in US waters



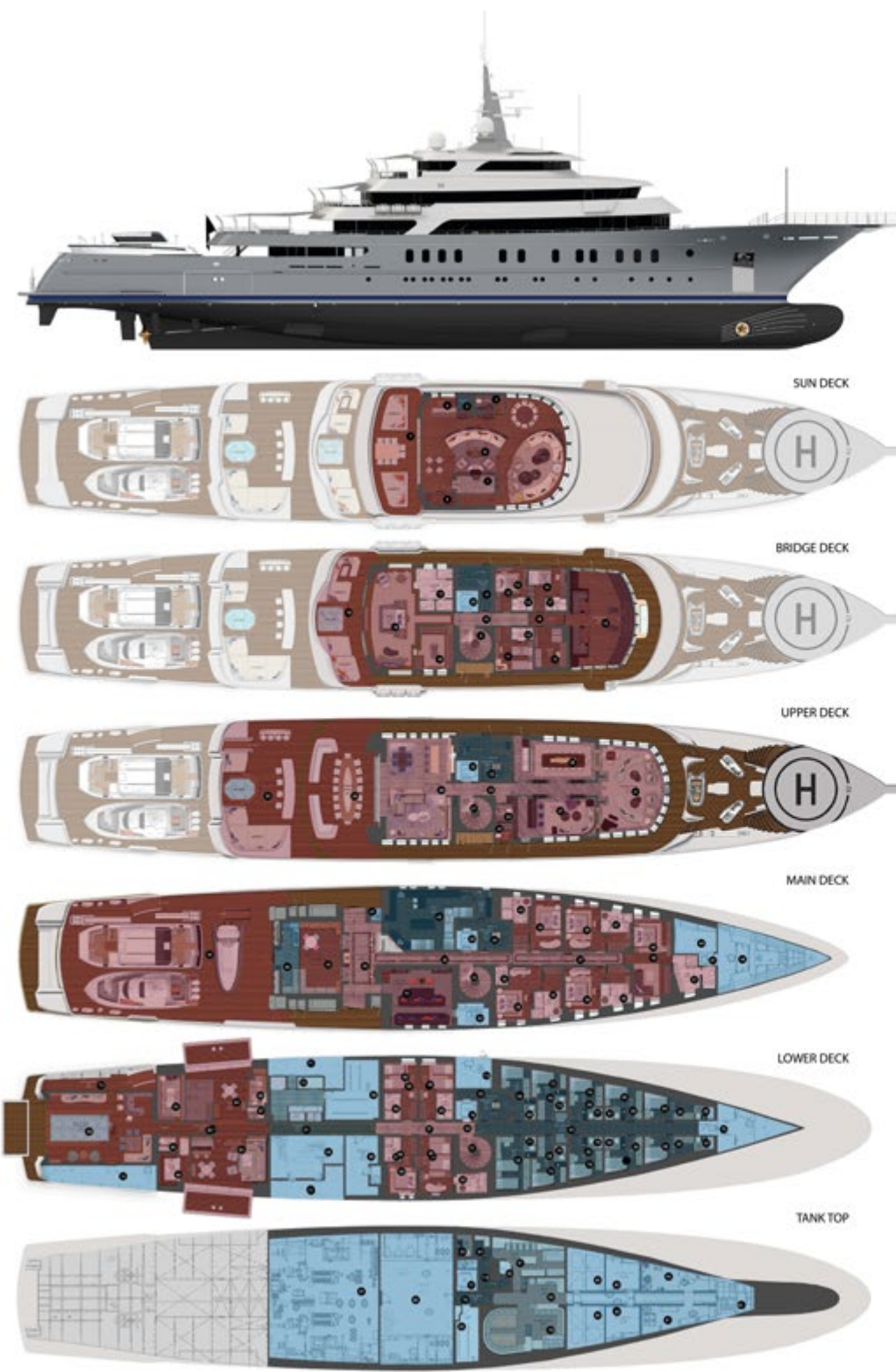


MAIN DECK



LOWER DECK

VICTORIOUS



- 1 MAIN STAIRS
- 2 CREW STAIRS
- 3 DAY HEAD
- 9 CREW LOBBY & STAIRS
- 4 PANTRY
- 22 CREW LOBBY & STAIRS
- 5 CIGAR STORE
- 34 CREW LOBBY & STAIRS
- 6 GENT'S CLUB
- 52 CREW LOBBY & STAIRS
- 7 SD AFT DECK
- 54 CREW CORRIDOR
- 8 MAIN STAIRS
- 55 CREW CABINS
- 10 MAIN LOBBY
- 61 LAZARETTE
- 11 TWIN'S CABIN
- 78 CREW LOBBY & STAIRS
- 12 DAUGHTER'S CABIN
- 79 CREW MESSROOM&LOUNGE
- 13 SHIP'S OFFICE
- 80 PANTRY
- 14 CAPTAIN'S CABIN
- 81 LAUNDRY
- 15 WHEELHOUSE
- 82 LAUNDRY STORAGE
- 16 DRESSING ROOM
- 83 DAY HEAD
- 17 BATHROOM
- 84 LINEN STORE
- 18 OWNER'S CABIN
- 20 ELEVATOR SHAFT
- 19 OWNER'S JACUZZI
- 32 ELEVATOR SHAFT
- 21 MAIN STAIRS & LOBBY
- 42 AV RACK ROOM
- 23 MAIN CORRIDOR
- 46 SEA TOYS STORAGE
- 24 DAY HEAD
- 47 HVAC TRUCK
- 25 DAY HEAD
- 48 CHAIN LOCKER
- 26 FORMAL DINING CONFERENCE
- 49 HVAC ROOM
- 27 LOUNGE
- 50 ELEVATOR SHAFT
- 28 SKY LOUNGE/ AFT SALOON
- 58 SWITCHBOARD ROOM
- 29 EXTERIOR DINING
- 59 HVAC
- 30 AFT JACUZZI
- 60 GENERATOR ROOM
- 31 FORWARD LOUNGE
- 71 STABILIZER ROOM
- 33 MAIN STAIRS & LOBBY
- 72 TECHNICAL AREA
- 35 MAIN CORRIDOR
- 74 TECHNICAL AREA
- 36 DAYHEAD
- 75 TECHNICAL AREA
- 37 GUEST CORRIDOR
- 76 ELEVATOR SHAFT
- 38 GUEST CABINS
- 77 ELEVATOR
- 39 GUEST VIP CABIN
- 85 HVAC ROOM
- 40 MAIN LOBBY
- 86 GENERATOR ROOM
- 41 GAMER'S ROOM
- 87 ENGINE ROOM
- 43 KID'S PLAYGROUND
- 88 TECHNICAL AREA
- 44 AFT DECK
- 89 TECHNICAL AREA
- 45 GALLEY
- 90 COLD STORE
- 51 MAIN STAIRS
- 91 TECHNICAL AREA
- 53 LOBBY
- 92 DRY STORE
- 56 GUEST CABINS
- 93 BOW TRUSTER
- 57 PASSAGEWAY

GUEST ZONE

CREW ZONE

TECHNICAL AREAS

AKYACHT