



XIPHIAS

109' (33.2m) | Esterel | 1974

XIPHIAS

BASIC SPECIFICATIONS

BUILDER

Esterel

BEAM (ft/m)

20' 5" (6.2m)

CRUISING/MAX SPEED

15 / 18 Knots

CREW

6

RANGE

600 nm

LENGTH (ft/m)

109' (33.2m)

DRAFT (ft/m)

5' 7" (1.7m)

FUEL CONSUMPTION

250 Litres/Hr

ACCOMMODATION

9 guests in 4 cabins

INTERIOR DESIGNER

Gabhan O'keefe

BUILT/REFIT

1974 / 2023

GROSS TONNAGE

151 GT

ENGINES

2 x MTU 1350 hp

ARRANGEMENTS

2 Double, 2 Twin

XIPHIAS

KEY FEATURES

- › MAJOR REFIT IN 2023
- › INTERIOR AREAS DESIGNED IN MODERN LINES AND SOPHISTICATED SET UP
- › SPACIOUS EXTERIOR AREAS ON MAIN & UPPER DECK TO ENTERTAIN GUESTS
- › ZERO STABILIZERS CMC

XIPHIAS

WATER TOYS

- › 1 X NOVAMARINE 440 TENDER WITH YAMNAHA 60HP (FOUR STROKE ENGINE)
- › SEADOO SPARK 2UP IBR
- › SEABOB F5
- › TIWAL 2 & 5.6 SQM YELLOW FURLING SAIL
- › INFLATABLE SOFA - JOBE BINAR TOWABLE (4PERSON)
- › JOBE WATER SKI (FOR ADULTS)
- › JOBE STIMMEL MULTI POSITION BOARD
- › SUP
- › SEARAFT INFLATABLE PLATFORM 4X2 WITH SWIM LADDER
- › INFLATABLE TUBE
- › DIVING EQUIPMENT
- › SNORKELLING EQUIPMENT

























































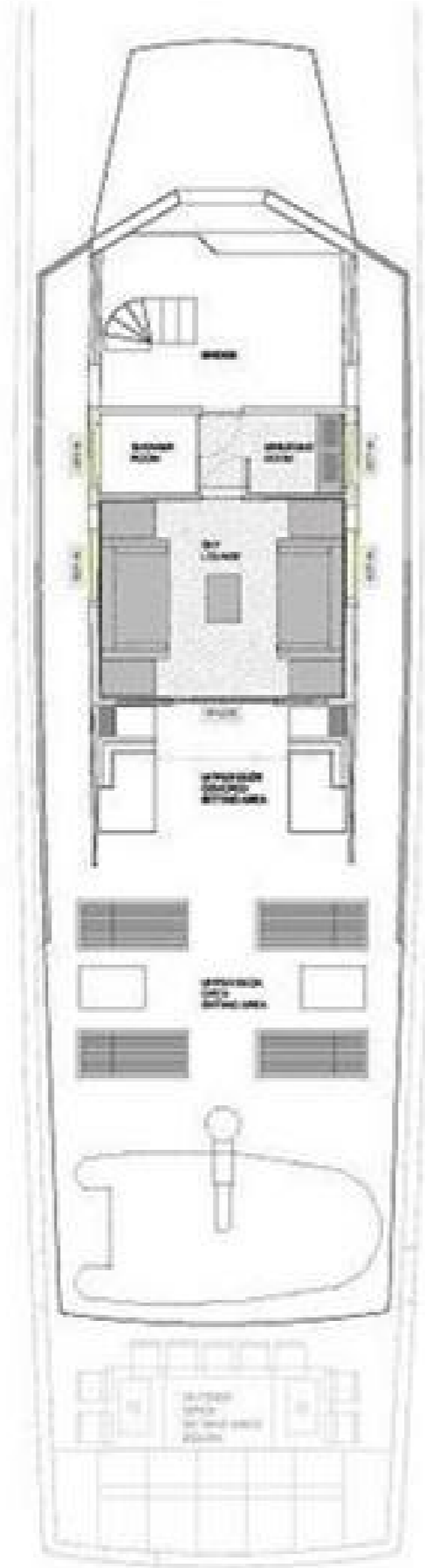




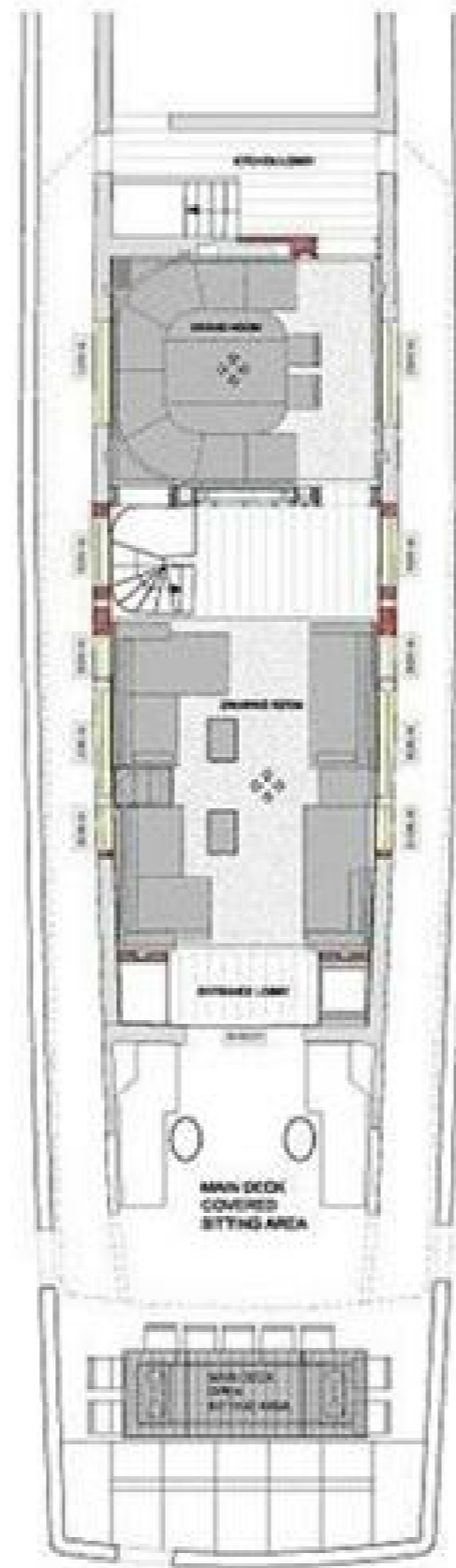








UPPER DECK



MAIN DECK



LOWER DECK